

Flight Procedures Cover Page	Task Action: FLIGHT CHECK	Task Type: IAP	Estimated Chart Date: 07/11/2024	APWS Task ID: 3AE1C893DB4C43B68F1CC7FC081A9352	APWS Project ID: 444D9F9A66DF4BEB87A18BCAD7779C28
Procedure: ILS OR LOC RWY 36L ORIG		Enroute: NO	Specialist: Blanco, Joseph		Agreement Number:
Airport ID: KHRL			Airport City: HARLINGEN		State: TX
Facility ID: RVZ	Facility Type: ILS	Flight Inspection Remark Type: Hold FC Slot			
<div>Procedure Comments:</div> <div>PENDING DATA USED FOR HRL AIRPORT/RWY AND (I-HRL). ACTIVE DATA USED FOR HRL VOR/DME. AIRPORT MAGVAR CHANGED FROM 5E/2005 TO 3E/2025 - RUNWAY RENUMBERED. WAIVER SUBMITTED FOR NONSTANDARD IFP, REQUESTING TO APPLY LPV MISSED APPROACH CRITERIA TO ILS SA CAT I and SA CAT II. CONTACT CASIMIR TABAKA AJV-A432 (405) 954-7931</div> <div>HARD DATE</div> <div>04/15/24: THIS IS A CORRECTED COPY OF THE FORM APPROVED ON 04/05/2024.</div> <div>1. TERMINAL ROUTES - REMOVED TF LEGS FROM ALUDE TO FENKU - FLIGHT CHECK REQUESTED AFTER TABLE TOP OF PROCEDURE. 2. TERMINAL ROUTES - REMOVED TF LEGS FROM KAHNS TO FENKU - FLIGHT CHECK REQUESTED AFTER TABLE TOP OF PROCEDURE. 3. TERMINAL ROUTES - CHANGED LEG FROM BOTVE TO FENKU TO BOTVE TO QUTIE - CAPTURE FIX FENKU NO LONGER NEEDED WITH THE REMOVAL OF THE TF LEGS. 4. NOTES - REMOVED NOTE "SEE PLANVIEW FOR MULTIPLE IF LOCATIONS" - IF LOCATIONS AT KAHNS AND ALUDE REMOVED AT FLIGHT CHECK REQUEST. 5. NOTES - REMOVED NOTE "CHART SPEED ICON IN PLANVIEW AT ALUDE: MAX 210 KIAS" - IF LEG STARTING AT ALUDE REMOVED AT REQUEST OF FLIGHT CHECK. 6. NOTES - REMOVED NOTE "CHART SPEED ICON IN PLANVIEW AT KAHNS: MAX 210 KIAS" - IF LEG STARTING AT KAHNS REMOVED AT REQUEST OF FLIGHT CHECK. 7. NOTES - REMOVED NOTE "CHART AT OR ABOVE 4000 AT ALUDE" - IF LEG STARTING AT ALUDE REMOVED AT REQUEST OF FLIGHT CHECK. 8. NOTES - REMOVED NOTE "CHART AT OR ABOVE 4000 AT KAHNS" - IF LEG STARTING AT KAHNS REMOVED AT REQUEST OF FLIGHT CHECK. 9. REMOVED NOTE "CHART SPEED ICON IN PLANVIEW AT FENKU: MAX 180 KIAS" - CAPTURE FIX FENKU NO LONGER NEEDED WITH THE REMOVAL OF THE TF LEGS. 10. REMOVED NOTE "CHART MANDATORY 1600 AT FENKU." - CAPTURE FIX FENKU NO LONGER NEEDED WITH THE REMOVAL OF THE TF LEGS. 11. PROFILE LINE 2 - CHANGED FROM PROFILE STARTS AT FENKU/5.19 DME TO PROFILE STARTS AT BOTVE/9.48 DME - FENKU REMOVED FROM PROCEDURE, RESULTING IN THE COMMON FIX BOTVE BEING THE NEW PROFILE START. 12. PROFILE LINE 4 - REPLACED FENKU FIX WITH BOTVE - FENKU REMOVED FROM PROCEDURE, RESULTING IN THE COMMON FIX BOTVE BEING THE NEW PROFILE START.</div> <div>THE FOLLOWING FIXES HAVE CORRECTED COPIES WITH THE SAME CC STATEMENT: ADMEY, AHACH, ALUDE, CIVBU, HAPUV, KAHNS, KIMVE, MINUE, PLIER, URAVE</div> <div>04/15/24: THIS IS A CORRECTED COPY OF THE FORM APPROVED ON 04/05/2024.</div> <div>1. REMOVED ILS OR LOC RWY 36L SA CAT I/CAT II FROM FIX USE</div> <div>FENKU FIX</div> <div>04/15/24: THIS IS A CORRECTED COPY OF THE FORM APPROVED ON 04/05/2024.</div> <div>1. REMOVED ILS OR LOC RWY 36L SA CAT I/CAT II FROM FIX USE 2. REMOVED DME FROM FIX TYPE 3. REMOVED FAC 1 (HARLINGEN) FROM FIX MAKE-UP</div> <div>04/26/24: THIS IS A CORRECTED COPY OF THE FORM APPROVED ON 04/22/2024.</div> <div>1. ADDED NOTE "VGSI AND ILS GLIDEPATH NOT COINCIDENT (VGSI ANGLE {ANGLE}/TCH {FEET})" - IAW 8260.19I 8-6-9.</div> <div>8260-2: ALUDE, KAHNS</div> <div>05/2/24: THIS IS A CORRECTED COPY OF THE FORM APPROVED ON 04/05/2024.</div> <div>1. REMOVED RNAV (GPS) Y RWY 36L FROM FIX USE. 2. DELETED FIXES ADEMY, AHACH, CIVB, HAPUV, KIMVE, MINUE, PLIER, URAVE.</div>					

QUALITY
21
CHECKED

QUALITY
9
CHECKED
BEGUE

QUALITY
16
CHECKED
J ZEDER 04/26/2024
QUALITY
16
CHECKED
J ZEDER 05/06/2024

REQUESTED BY: FAA
PRB RESULT: RETURN FOR REWORK
WAIVER: NO HAZARD IDENTIFIED

NON-CRITICAL SAFETY COMMENTS

1. 8260-1; BLOCK 3, REASON FOR WAIVER: "THIS WILL ALLOW FOR THE CLIMB TO AN ALTITUDE AND CLIMBING LEFT TURN MISSED APPROACH..." - THIS MISSED APPROACH IS STRAIGHT OUT - NO LEFT TURN. RECOMMEND REMOVING THE REFERENCE TO A LEFT TURN.

Waiver updated below - JB

ADMINISTRATIVE NOTE:

1. 8260-9, PART B: SUPPLEMENTAL DATA, UPDATE MALSR INFORMATION FOR RW36L IAW 8260-19 8-7-1C(5)

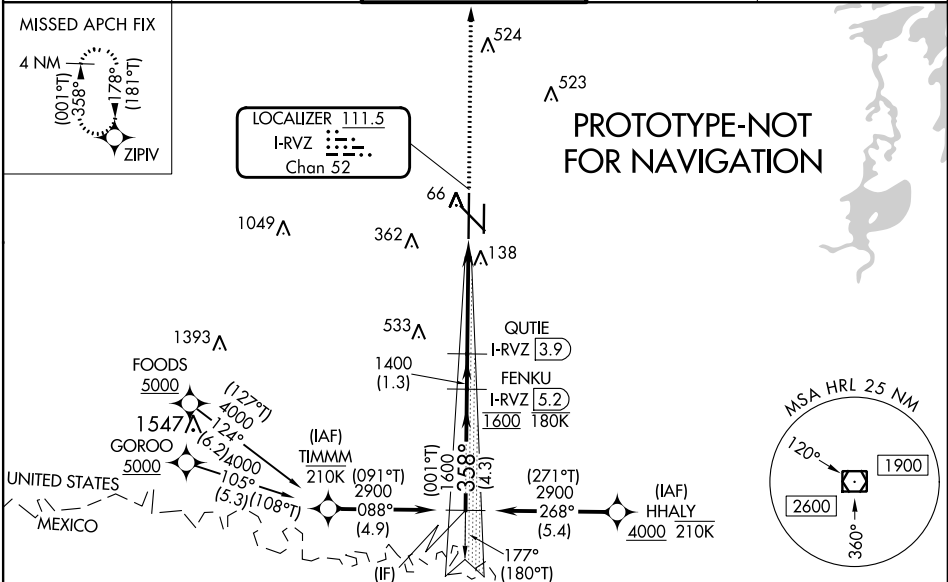
MALSR information is a direct pull
from AIRNAV - JB

LOC/DME I-RVZ	APP CRS	Rwy Idg	9400
111.5	358°	TDZE	36
Chan 52		Apt Elev	36

ILS RWY 36L (SA CAT I & II)
VALLEY INTL (HRL)

RNP APCH-GPS.	MISSED APPROACH: Climb to 2000 direct ZIPV and hold.
DME required.	
SA CAT I CHART NOTE: Requires specific OPSPEC, MSPEC, or LOA approval. SA CAT II CHART NOTE: Requires specific OPSPEC, MSPEC, or LOA approval.	

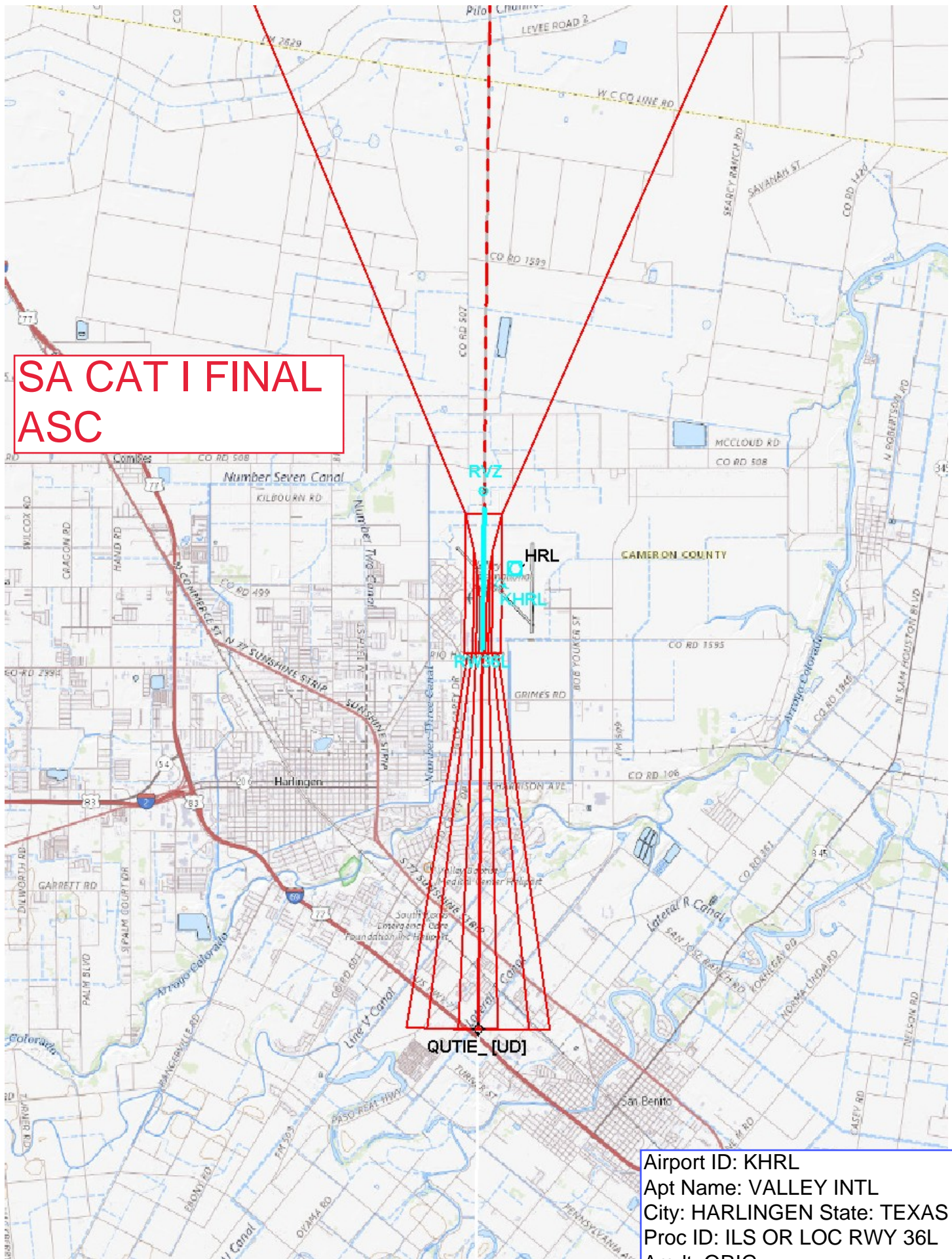
ATIS 124.85	VALLEY APP CON 120.7 279.5	HARLINGEN TOWER ★ 119.3 (CTAF) 317.6	GND CON 121.7	UNICOM 122.95
----------------	-------------------------------	-----------------------------------------	------------------	------------------



BOTVE I-RVZ 9.5				
<div><div>FENKU I-RVZ 5.2</div><div>QUTIE I-RVZ 3.9</div></div> <div><div>1600</div><div>1400</div><div>1400</div></div> <div><div>GS 3.00° TCH 55</div><div>1001°T 358°</div><div>1039°</div></div> <div><div>1.3 NM</div><div>4.1 NM</div></div> <div><div>2000</div><div>ZIPV</div></div>				
CATEGORY	A	B	C	D
S-ILS 36L	SA CAT I RA 36/14 150 DA 186			
S-ILS 36L	SA CAT II RA 36/12 100 DA 136			
SA CATEGORY I & II ILS - SPECIAL AIRCREW & AIRCRAFT CERTIFICATION REQUIRED				

ELEV 36	D	TDZE 36
HIRL Rwy 13-31 and 18R-36L REIL Rwy 13 and 18L MIRL Rwy 18L-36R		

SA CAT I FINAL
ASC



Airport ID: KHRL
Apt Name: VALLEY INTL
City: HARLINGEN State: TEXAS
Proc ID: ILS OR LOC RWY 36L
Amdt: ORIG
Scale: 1:100,000

**SA CAT II FINAL
ASC**

RVZ

HRL

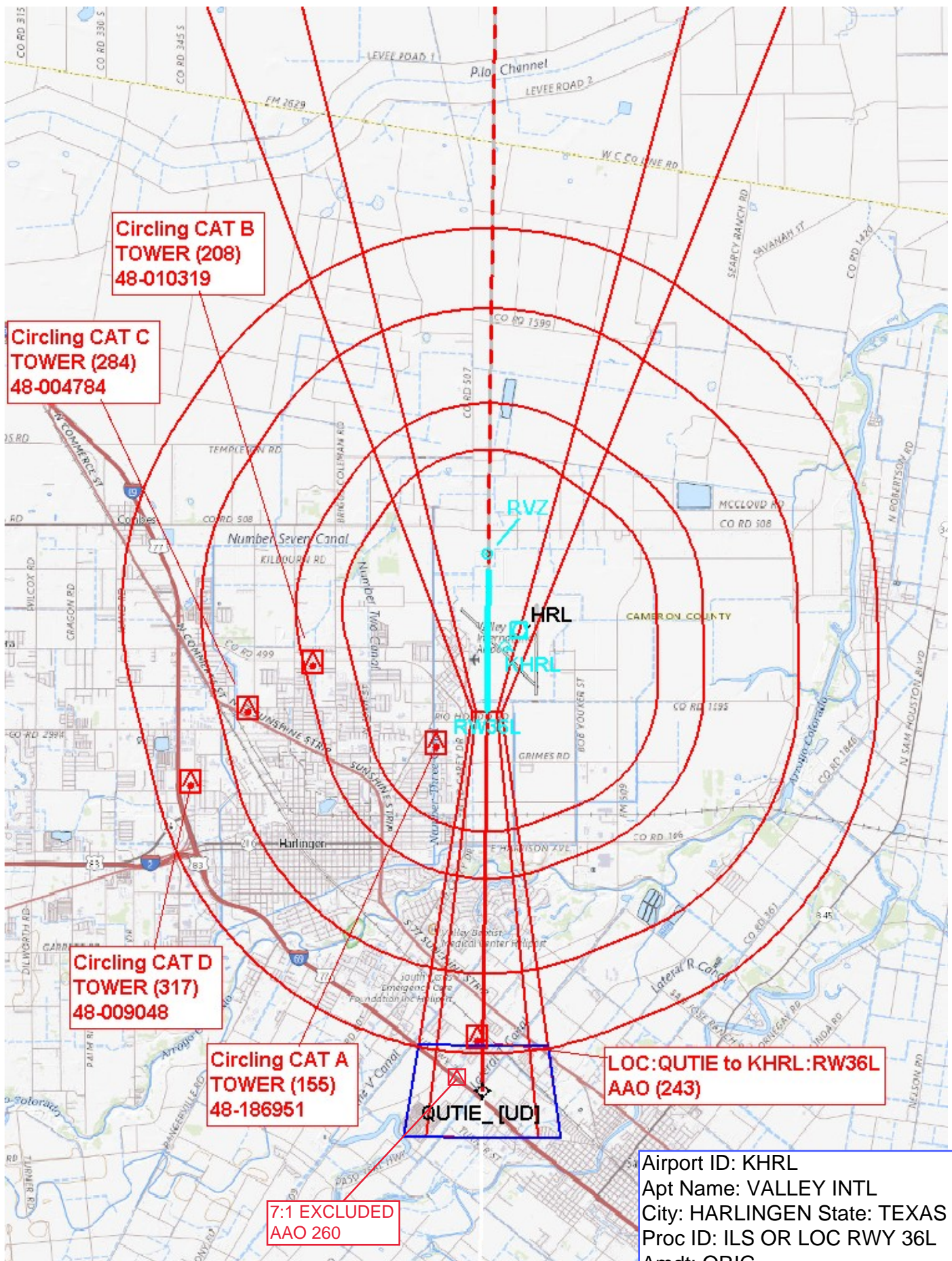
KHRL

QUTIE [UD]

Airport ID: KHRL
Apt Name: VALLEY INTL
City: HARLINGEN State: TEXAS
Proc ID: ILS OR LOC RWY 36L
Amdt: Q1C

Airport ID: KHRL
Apt Name: VALLEY INTL
City: HARLINGEN State: TEXAS
Proc ID: ILS OR LOC RWY 36L
Amdt: ORIG
Scale: 1:100,000

Airport ID: KHRL
Apt Name: VALLEY INTL
City: HARLINGEN State: TEXAS
Proc ID: ILS OR LOC RWY 36L
Amdt: ORIG
Scale: 1:100,000





Federal Aviation Administration

Initial Development Notification for AIRNAV Pending Records

To: Scott Jerden, Manager Aeronautical Data Team, AJV-A31

From: Bev Bordy, Manager Instrument Flight Procedures Projects Team, AJV-A4

Subject: **ACTION:** Request for Pending Records **KHRL__VALLEY INTL, , TX US**

The Magnetic Variation (MV) data for the airport(s) and/or facility(s) listed will be revised effective concurrent with the publication of the procedure(s) listed below. Estimated Chart Date: 7/11/2024

Current/Assigned MV E 5 2005 New MV E 3 2025

ECD	Airport ID	Procedure Name	AMDT #	Task Report Type Selections
7/11/2024	KHRL	ILS OR LOC RWY 18R AMDT 1 (SA CAT I & CAT II)		MAGVAR
7/11/2024	KHRL	ILS OR LOC RWY 36L ORIG (SA CAT I & CAT II)		MAGVAR
7/11/2024	KHRL	RNAV (GPS) RWY 36R AMDT 1		MAGVAR
7/11/2024	KHRL	RNAV (GPS) RWY18L AMDT 3		MAGVAR
7/11/2024	KHRL	RNAV (GPS) Y RWY 13 AMDT 3		MAGVAR
7/11/2024	KHRL	RNAV (GPS) Y RWY 18R AMDT 4		MAGVAR
7/11/2024	KHRL	RNAV (GPS) Y RWY 31 AMDT 4		MAGVAR
7/11/2024	KHRL	RNAV (GPS) Y RWY 36L AMDT 4		MAGVAR
7/11/2024	KHRL	RNAV (RNP) Z RWY 13 AMDT 1		MAGVAR
7/11/2024	KHRL	RNAV (RNP) Z RWY 18R AMDT 1		MAGVAR
7/11/2024	KHRL	RNAV (RNP) Z RWY 31 AMDT 2		MAGVAR
7/11/2024	KHRL	RNAV (RNP) Z RWY 36L AMDT 1		MAGVAR
7/11/2024	KHRL	TAKEOFF MINIMUMS ODP AMDT 1		MAGVAR
7/11/2024	KHRL	VOR RWY 18L AMDT 2		MAGVAR
7/11/2024	KHRL	VOR RWY 18R AMDT 1		MAGVAR
7/11/2024	KHRL	VOR RWY 36L AMDT 1		MAGVAR
7/11/2024	KHRL	VOR Y OR TACAN RWY 31 AMDT 1C		MAGVAR
7/11/2024	KHRL	VOR Z RWY 31 AMDT 1A		MAGVAR

NAVAID ID / RWY	Type / Old No.	Use / New RWY/Note
I-HRL	ILS	ILS
RWY	35	36
RWY	17	18

RUNWAY NUMBERS 17/35 WILL CHANGE TO 18/36. RUNWAY NUMBERS 13/31 WILL NOT CHANGE.

VOR NAVAIDS are not being updated at this time.

IF you have any questions please notify: Casimir.L.Tabaka@faa.gov Processed Wednesday, December 27, 2023

1. FLIGHT PROCEDURE IDENTIFICATION:

ILS RWY 36L (SA CAT I and CAT II)
Valley Intl (HRL)
Harlingen, TX

2. WAIVER REQUIRED AND APPLICABLE STANDARD:

IAW 8260.3E, 1-4-2. NONSTANDARD IFP, REQUESTING TO APPLY LPV MISSED APPROACH CRITERIA TO ILS SA CAT I and SA CAT II.

IAW 8260.3E, 10-3-1, THE LPV MISSED CRITERIA MAY BE USED IN A CAT I ILS MISSED APPROACH. FAA ORDER 8400.13F, CHAPTER 5, 1. SCOPE, THE INSTRUMENT APPROACH AND GROUND FACILITIES MUST MEET CAT II REQUIREMENTS LISTED IN CHAPTER 4 AND 8400.13 F, CHAPTER 4 AND 7, 5.F. MAS, THE MAS MUST MEET THE CURRENT TERPS CAT II/III DEVELOPMENT STANDARD.

3. REASON FOR WAIVER (JUSTIFICATION FOR NONSTANDARD TREATMENT):

To ensure automation in TARGETS we used the GPS missed and this will construct the RNAV missed approach and all missed approaches will align for the ILS or LOC RWY 36L , RNAV (GPS) RWY 36L and the RNAV (RNP) RWY 36L and this will allow for the straight missed approach, all to the same fix. This will also negate a need for an alternate missed approach

4. EQUIVALENT LEVEL OF SAFETY PROVIDED:

1. This ILS will be fully coded and retrievable from their FMS database.
2. Aircraft will climb straight ahead on a continuation of the final approach course to the Clearance Limit.
3. Combined 8260.58, LPV missed approach criteria with ILS CAT II/III criteria 8260.3E, 10-5.
4. Negates a need for an alternate missed approach

5. ALTERNATIVE ACTIONS DEEMED NOT FEASIBLE:

HRL VOR/DME is the only ground-based facility that can provide positive course guidance for the missed approach. BRO VORTAC has numerous restrictions and is on the VOR MON Program for decommissioning at a later date. MFE VOR/DME is unable to provide reception at a low altitude and is on the VOR MON Program for decommissioning at a later date. When trying to use HRL VOR/DME the climb to an altitude and turn to intercept a radial is not currently programmed in TARGETS.

6. COORDINATION WITH USER ORGANIZATIONS (SPECIFY):

CRP

7. SUBMITTED BY:

DATE	OFFICE IDENTIFICATION	TITLE
03/25/24	AJV-A4	MANAGER

SIGNATURE

Digitally signed by
CASIMIR L TABAKA
May 29, 2024

8. AFS ACTIONS:

☐ APPROVED ☐ DISAPPROVED ☐ NOT REQUIRED

COMMENTS:

DATE	ROUTING SYMBOL	SIGNATURE
------	----------------	-----------