

Flight Procedures Cover Page	Task Action: FLIGHT CHECK	Task Type: IAP	Estimated Chart Date: 10/31/2024	APWS Task ID: 3AB5D6B9FDEB42C5860205460D8135D7	APWS Project ID: 622299F305164F23B4DB19D9605261C1
Procedure: RNAV (GPS) RWY 1 ORIG		Enroute: NO	Specialist: Weston, Daniel		Agreement Number:
Airport ID: 7S6			Airport City: WHITE SULPHUR SPRINGS		State: MT
Facility ID:	Facility Type:	Flight Inspection Remark Type: New FC Slot			
<div>Procedure Comments: ORIGINAL PROCEDURE.</div> <div>VFR TO IFR AIRPORT.</div> <div>PENDING AIRNAV DATA USED.</div> <div>ASSIGNED MAG VAR, K7S6: OLD 16E-NEW 11E.</div> <div>CONTACT RAKE MCGRAW 405-954-8711.</div> <div>09/23/24: THIS IS AN UPDATED COPY OF THE FORM DEVELOPED ON 03/08/24.</div> <div>1. ADDED CHART NOTE: CIRCLING NA FOR ALL CATS E OF RWY 01-19 AT NIGHT.</div> <div>2. ADDED CHART PROFILE NOTE: VGSI AND RNAV GLIDEPATH NOT COINCIDENT (VGSI ANGLE {ANGLE}/TCH {FEET}).</div> <div>3. Terminal routes: updated BAXTA to MOMHE altitude from "11400" to "12000".</div> <div>4. TERMINAL ROUTES: UPDATED MOMHE TO HEDAD ALTITUDE FROM "8900" TO "12000".</div> <div>5. Terminal routes: updated HLN VORTAC to GOUGE altitude from "10800" to "12000".</div> <div>6. TERMINAL ROUTES: UPDATED GOUGE TO TIRBE ALTITUDE FROM "8900" TO "12000".</div> <div><div>QUALITY 38 CHECKED</div><div>QUALITY 39 CHECKED</div></div>					

<b>FIPC BASIC FORM</b>						
<b>PROCEDURE:</b> RNAV (GPS) RWY 1 ORIG			<b>AIRPORT NAME:</b> WHITE SULPHUR SPRINGS		<b>AIRPORT ID:</b> K7S6	<b>SPECIAL CONTROL NO:</b> SG-08-029-24
<b>FAC ID:</b> K7S601		<b>CITY:</b> WHITE SULPHUR SPRINGS			<b>ST:</b> MT	<b>ORIG CHART DATE:</b> 10/31/2024
<b>DFL TYPE:</b> PROC/S	<b>THIRD PARTY:</b> <input type="checkbox"/> YES	<b>EST. TIME ON SITE:</b> 0.4	<b>REIMB. NUMBER:</b>	<b>PTS TASK ID:</b> 3AB5D6B9FDEB42C5860205460D8135D7		
<b>PREFLIGHT NOTES</b>						
<b>REVIEWER:</b> troy e devine					<b>DATE:</b> 09/19/2024	
<b>COMMENTS:</b>					<b>CHECK ONE:</b>	
					<input checked="" type="checkbox"/> FLT CK REQ <input type="checkbox"/> NFCR <input type="checkbox"/> REJECT	
						<b>YES</b>
					<b>CPV COMPLETE?</b>	
					<b>X</b>	
<b>PROCEDURE RESULTS</b>						
<b>INSPECTION DATE:</b> 09/19/2024	<b>CREW #:</b> VN502	<b>N #:</b> N75	<b>INSTRUMENT PROCEDURE STATUS:</b> <input type="checkbox"/> SAT <input checked="" type="checkbox"/> SAT W/CHANGES <input type="checkbox"/> UNSAT		<b>ARINC CODING:</b> <input checked="" type="checkbox"/> SAT <input type="checkbox"/> SAT/GOLD <input type="checkbox"/> UNSAT	
<b>FLIGHT INSPECTOR SIGNATURE:</b> troy e devine @ 09/20/2024 00:03			<b>PRINTED NAME:</b> DEVINE, TROY ELLEN			<b>NOTAM INITIATED?</b> <input checked="" type="checkbox"/> YES <input type="checkbox"/> NO
<b>FLIGHT INSPECTOR REMARKS:</b> SG-08-027-24: 7S6, White Sulphur Springs Regional Airport, White Sulphur Springs MO, RNAV (GPS) RWY 01 Orig: SAT with CHANGES Runway Survey -SAT All segments flow SAT, circling flown SAT, missed approach and MAPH SAT. VGSI NOT coincident with RNAV (GPS) RWY 01 CHANGES: SALT LAKE CENTER 133.4 is unable to communicate at published IAF altitudes TIRBE, HEDAD, BOZEMAN. These areas are controlled by Big Sky approach.118.97 in south and Helena in west. until TIRBE then back to Big Sky. Salt Lake is unreliable below 10,000'. NOTAM - No circling east of AP at night due to terrain						
<b>IN-FLIGHT OBSTACLE REPORT</b>						
<b>OBSTRUCTION ID #:</b>	<b>COORDINATES OR LOCATION:</b>	<b>GNSS ALTITUDE (MSL):</b>	<b>BAROMETRIC ALTITUDE (MSL):</b>	<b>HEIGHT ABOVE GROUND LEVEL:</b>		

FIG

# RNAV (GPS) RWY 1

## WHITE SULPHUR SPRINGS (7S6)

**MISSED APPROACH:** Climb to 5500 then climbing left turn to 9400 direct WEMBO and on track 278° to ANNEM and hold.

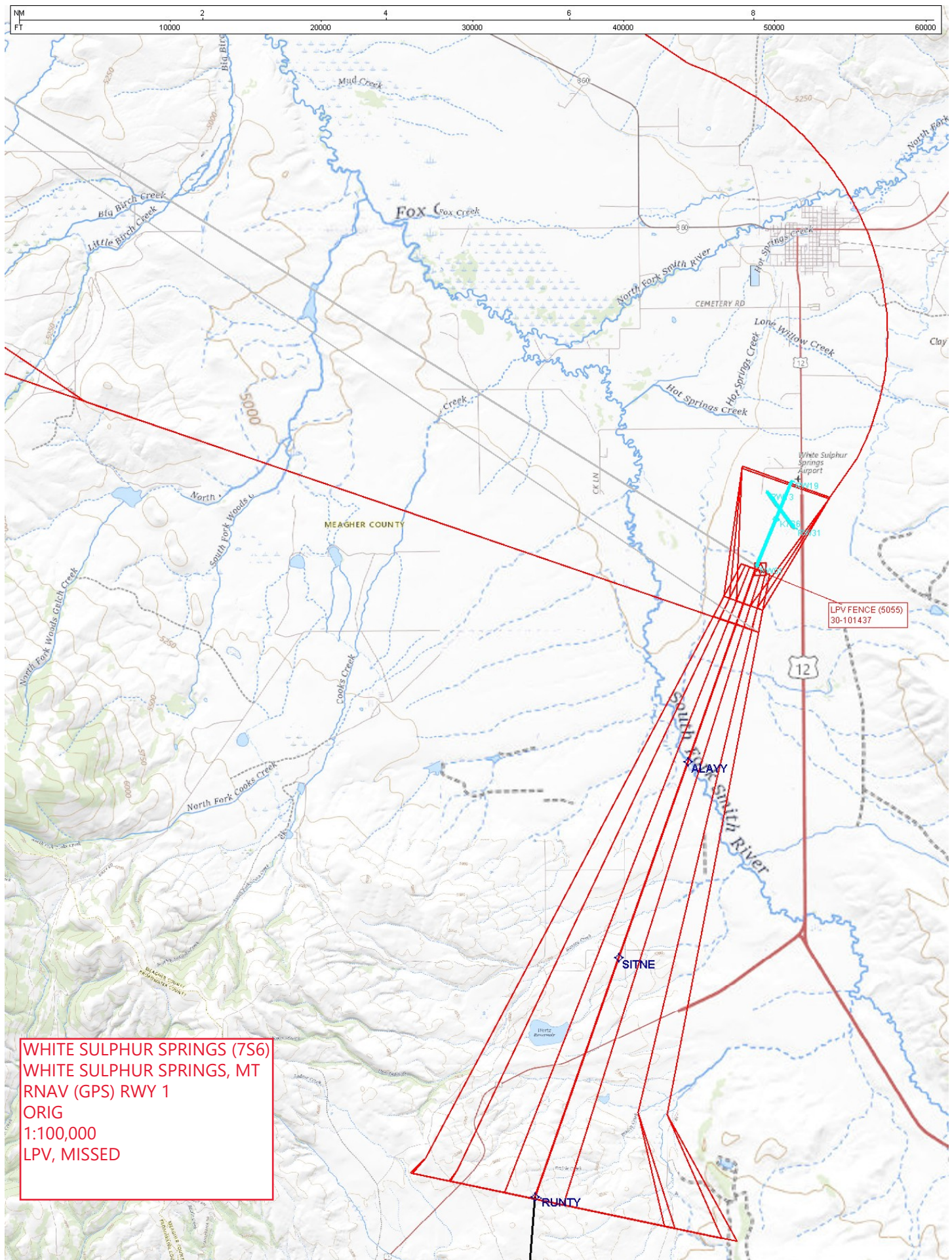
Circling NA all Cats east of Rwy 1-19 at night.

CTAF  
122.9 L

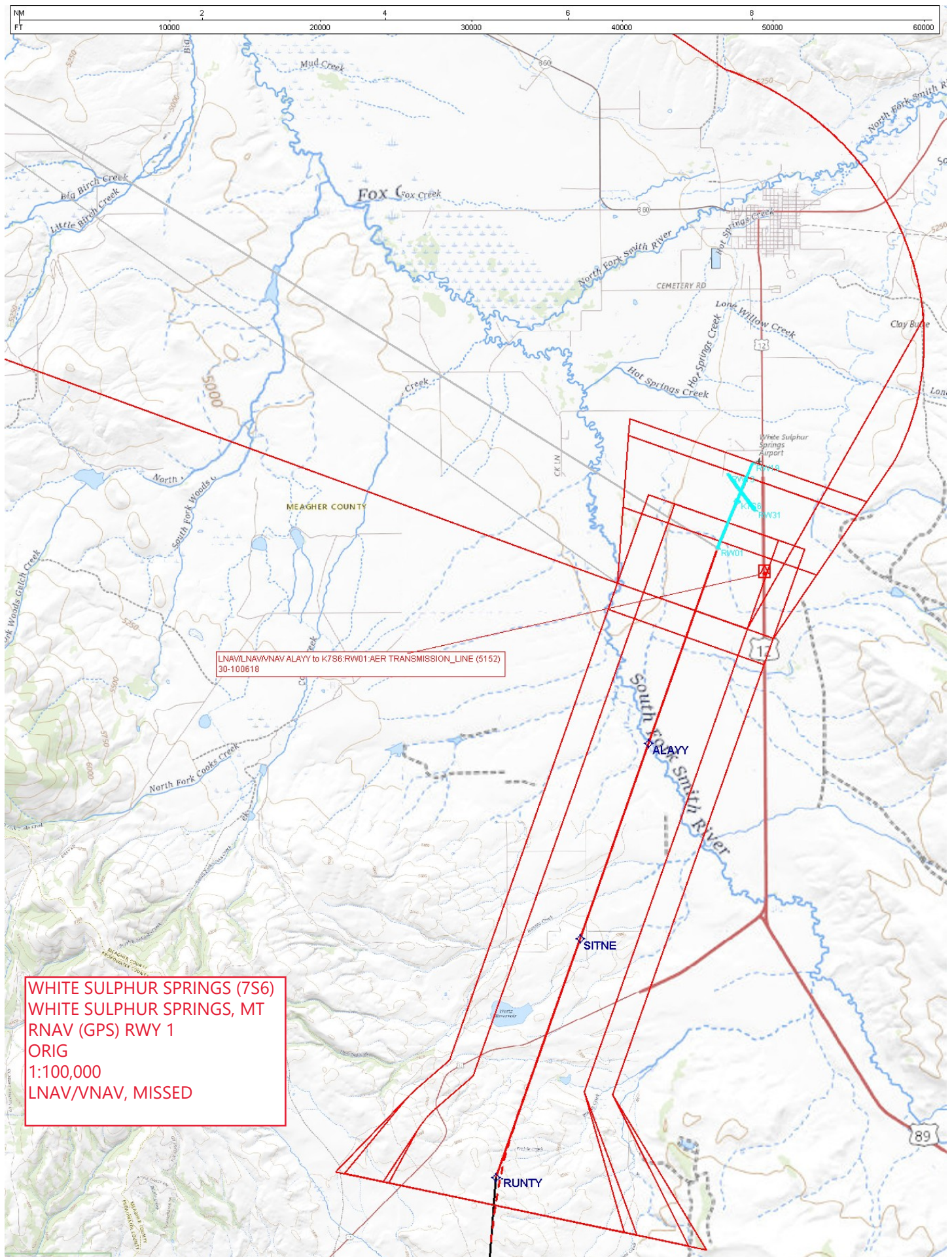
AUTOMATED AL-11832 RNAV (GPS) RWY 1

1:750,000  
NW-1  
22 JUL 2024  
COMPILER: CG  
REVIEWER:  
DBL CHKR:  
EFF: FIG

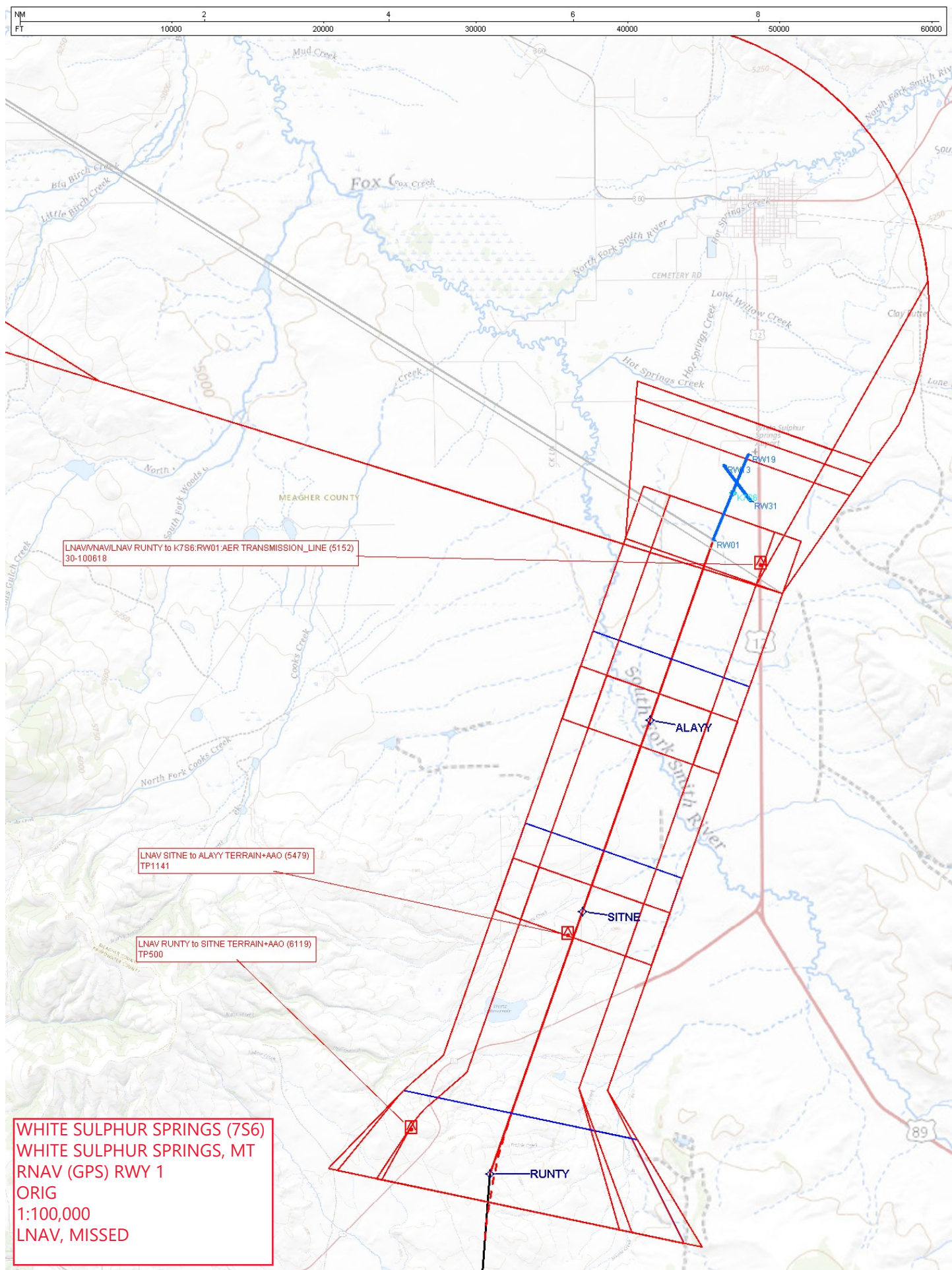
WHITE SULPHUR SPRINGS (7S6)  
RNAV (GPS) RWY 1



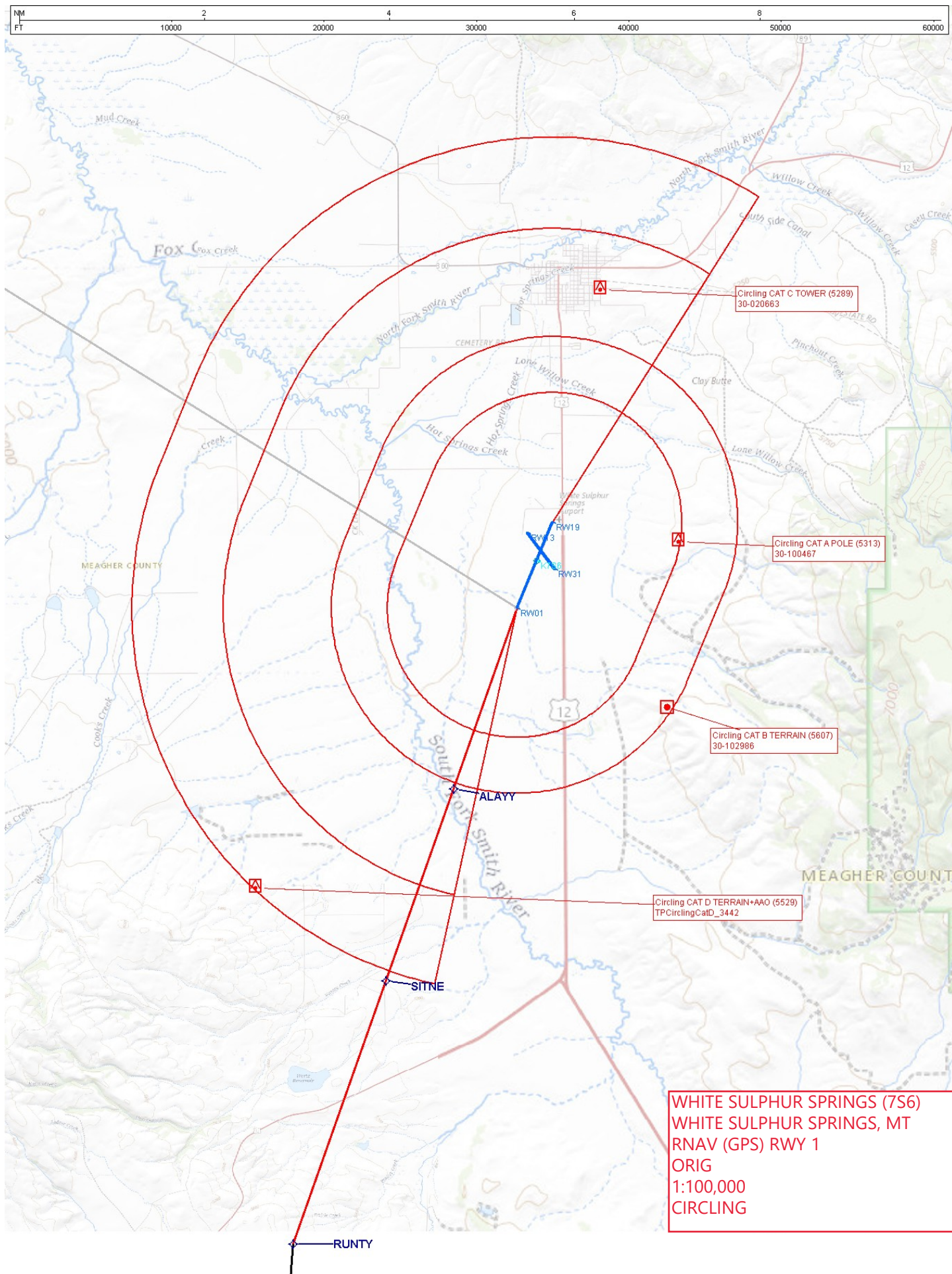




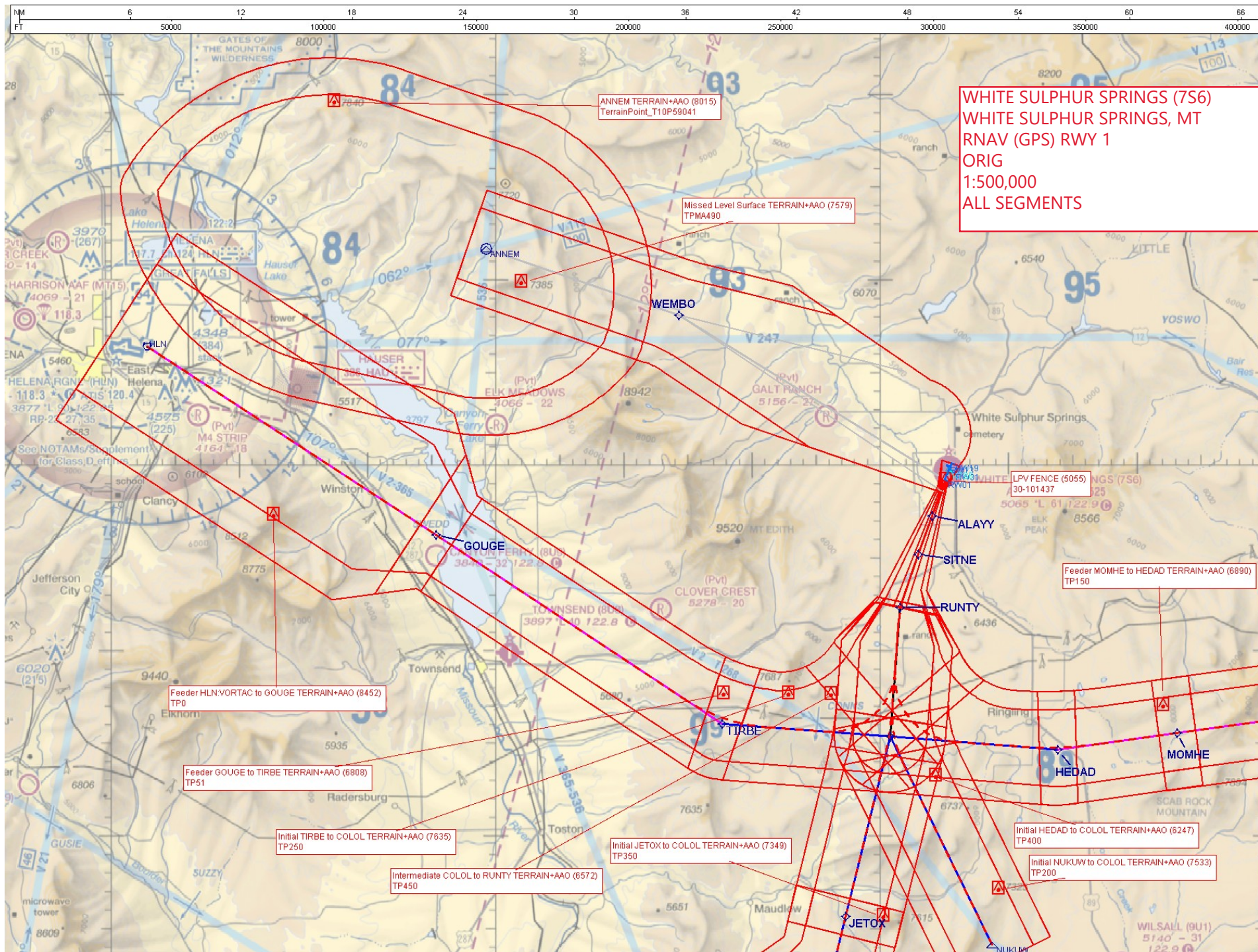












WHITE SULPHUR SPRINGS (7S6)  
WHITE SULPHUR SPRINGS, MT  
RNAV (GPS) RWY 1  
ORIG  
1:500,000  
ALL SEGMENTS

Feeder HLN/VORTAC to GOUGE TERRAIN+AAO (8452)  
TP0

Feeder GOUGE to TIRBE TERRAIN+AAO (6808)  
TP51

Initial TIRBE to COLOL TERRAIN+AAO (7635)  
TP250

Intermediate COLOL to RUNTY TERRAIN+AAO (6572)  
TP450

Initial JETOX to COLOL TERRAIN+AAO (7349)  
TP350

Initial HEDAD to COLOL TERRAIN+AAO (6247)  
TP400

Initial NUKUW to COLOL TERRAIN+AAO (7533)  
TP200

Feeder MOMHE to HEDAD TERRAIN+AAO (6890)  
TP150

LPV FENCE (5055)  
30-101437  
5065° L 61° 122.9°  
8566

ANNEM TERRAIN+AAO (8015)  
TerrainPoint\_T10P59041

Missed Level Surface TERRAIN+AAO (7579)  
TPMA490



