

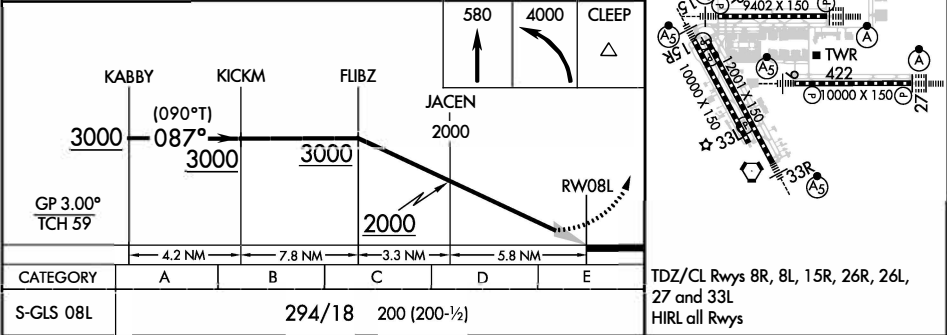
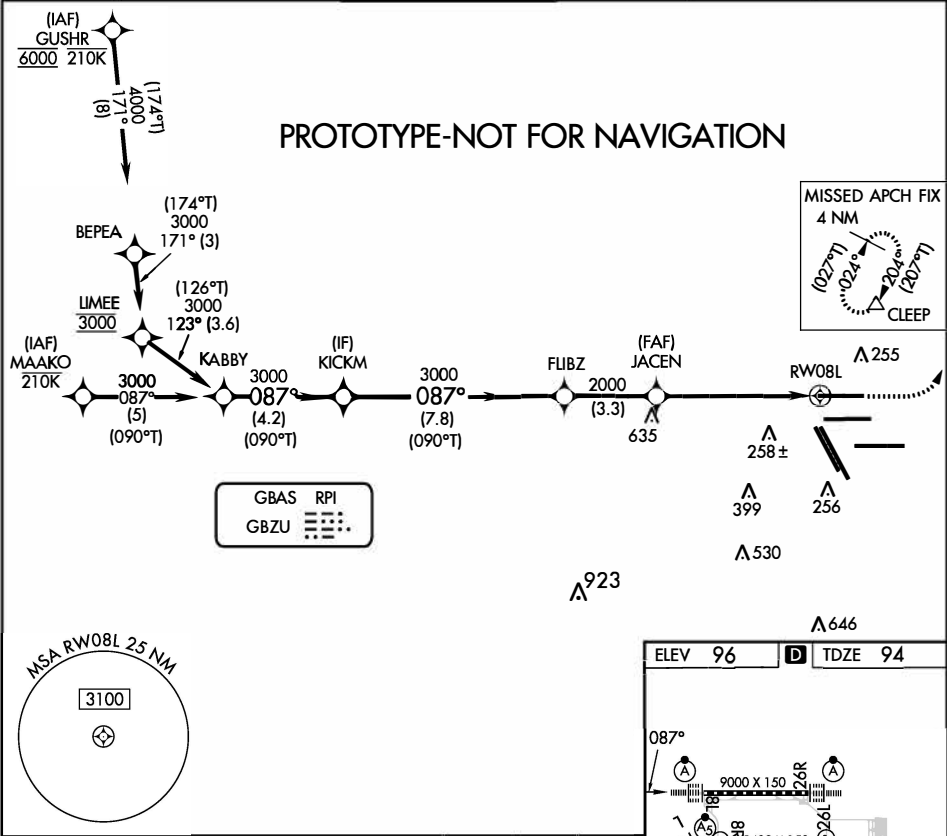
Flight Procedures Cover Page	Task Action: FLIGHT CHECK	Task Type: IAP	Estimated Chart Date: 02/23/2023	APWS Task ID: 3A77A7F1944C4EFE8FB443265B2DAA8A	APWS Project ID: 61FBBAA376BA4BB69611F3C7264A4662
Procedure: GLS RWY 8L AMDT 2		Enroute: NO	Specialist: Jackson, Nicholas		Agreement Number:
Airport ID: KIAH			Airport City: HOUSTON		State: TX
Facility ID:	Facility Type:	Flight Inspection Remark Type: New FC Slot			
<div>Procedure Comments: CONNECTED STAR TERMINATION FIXES TO THE GLS APPROACHES TO MIRROR THE ILS AND RNAV PROCEDURES.</div> <div>ACTIVE AIRPORT DATA UTILIZED.</div> <div>CONTACT: ERIC SUSKI, 405.954.7331</div> <div><div>Digitally signed by ERIC N SUSKI Dec 07, 2022</div><div><div>QUALITY 25 CHECKED</div><div>QUALITY 38 CHECKED</div></div></div>					

GBAS CH 21073 G08B	APP CRS 087°	Rwy Idg TDZE Apt Elev	9000 94 96
--	------------------------	-----------------------------	---------------------------------------

GLS RWY 8L
GEORGE BUSH INTCNL/HOUSTON (IAH)

RNP APCH - GPS.		ALSIF-2	MISSED APPROACH: Climb to 580 then climbing left turn to 4000 direct CLEEP and hold.
Use of FD or AP required during simultaneous operations. Autopilot coupled approach NA below 294. Simultaneous approach authorized.			
NA			

D-ATIS 124.05	HOUSTON APP CON 120.05 379.1 EAST 124.35 316.15 WEST	HOUSTON TOWER 120.72 290.2	GND CON 121.7	CLNC DEL 128.1	CPDLC
-------------------------	--	--------------------------------------	-------------------------	--------------------------	-------



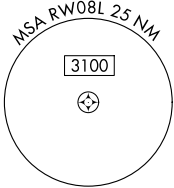
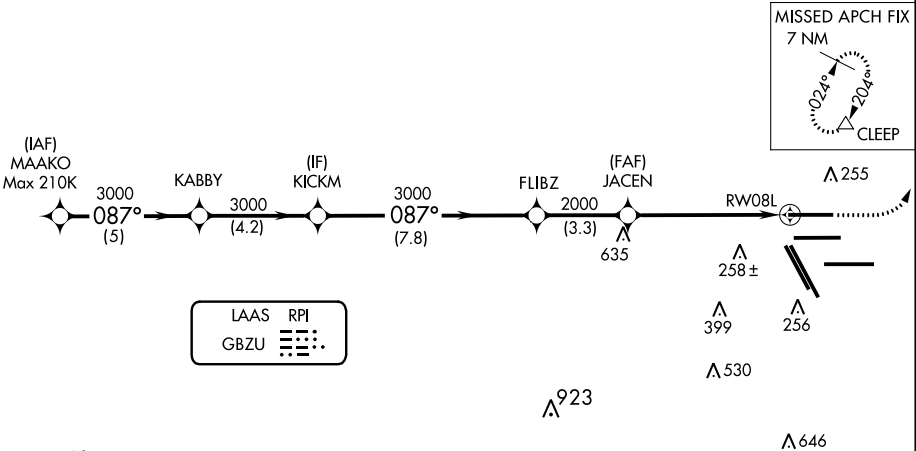
LAAS CH 21073 RPI GBZU	APP CRS 087°	Rwy Idg 9000 TDZE 95 Apt Elev 96
--	------------------------	---

GLS RWY 8L
GEORGE BUSH INTCNL/HOUSTON (IAH)

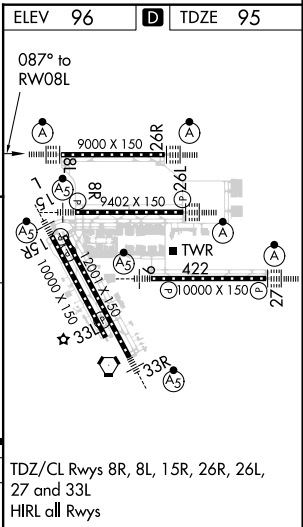
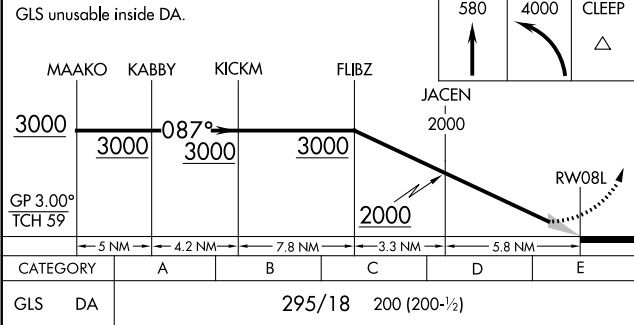
▼ ▲ NA	For inop ALSF, increase GLS all Cats visibility to RVR 4000. Simultaneous approach authorized with Rwy 8R and Rwy 9. DME/DME RNP-0.3 NA. GPS Required. Autoland approach NA. Use of FD or AP providing RNAV track guidance required during simultaneous operations.	ALSF-2 	MISSED APPROACH: Climb to 580 then climbing left turn to 4000 direct CLEEP and hold.
-------------------------	---	------------	--

D-ATIS 124.05	HOUSTON APP CON 120.05 379.1 EAST 124.35 316.15 WEST	HOUSTON TOWER 120.72 290.2	GND CON 121.7	CLNC DEL 128.1	CPDLC
-------------------------	--	--------------------------------------	-------------------------	--------------------------	-------

RADAR REQUIRED



GLS unusable inside DA.



HOUSTON TEXAS

AL-5461 (FAA)

22083

LOC/DME I-BZU 111 55 Chan 52 (Y)	APP CRS 087°	Rwy Idg TDZE Apt Elev	9000 94 96
--	------------------------	-----------------------------	---------------------------------------

ILS or LOC RWY 8L

GEORGE BUSH INTCNL/HOUSTON (IAH)

DME required. From GUSHR: RNAV 1 GPS required.

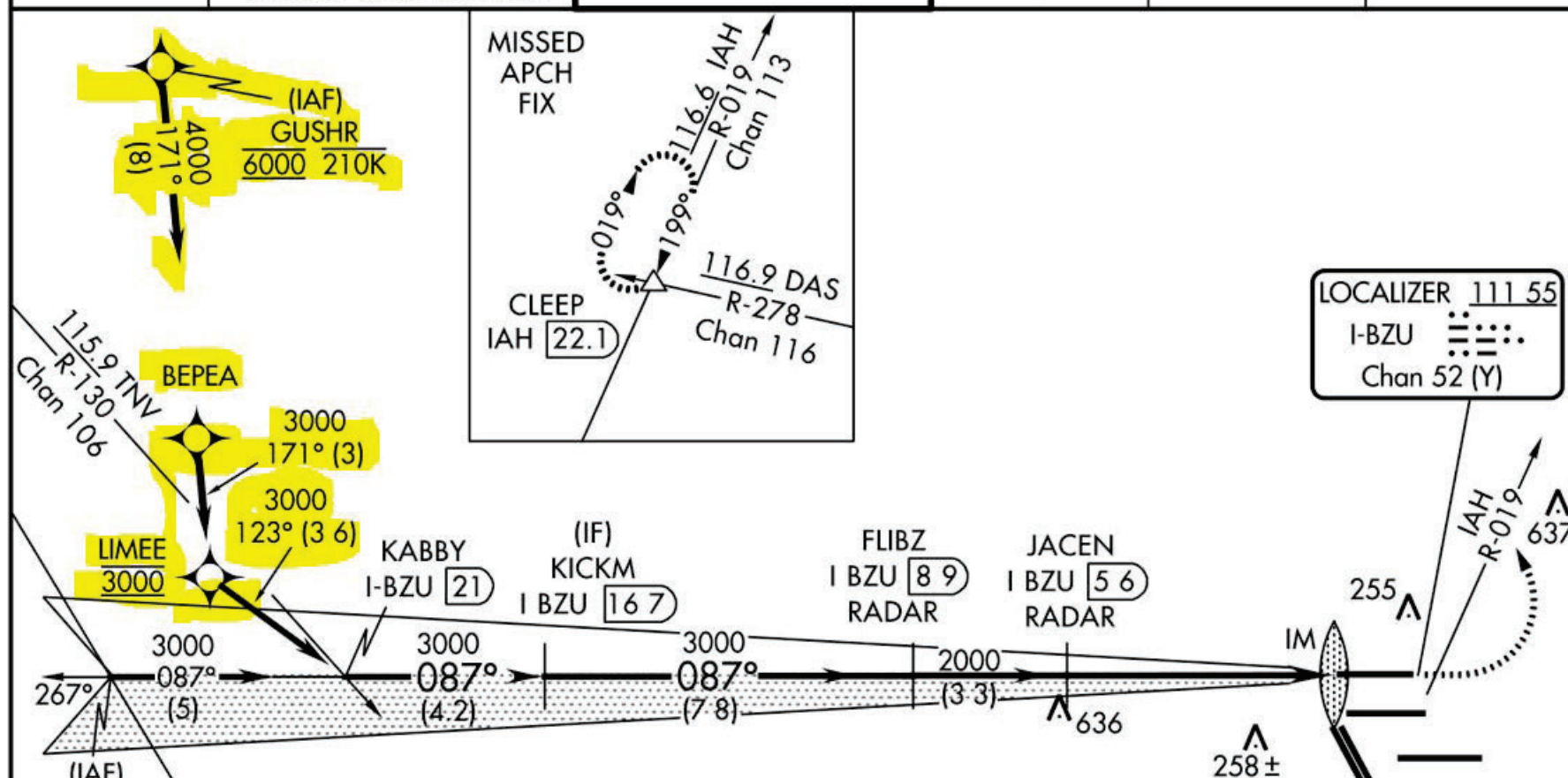
ALSF 2



MISSED APPROACH: Climb to 600 then climbing left turn to 4000 on IAH VORTAC R-019 to CLEEP INT/IAH 22.1 DME and hold

Simultaneous approach authorized with Rwy 8R and Rwy 9.

ATIS 124.05	HOUSTON APP CON 120.05 379.1 EAST 124.35 316.15 WEST	HOUSTON TOWER 120.725 290.2	GND CON 118.575	CLNC DEL 128.1	CPDLC
-----------------------	--	---------------------------------------	---------------------------	--------------------------	-------



HOUSTON, TEXAS

AL-5461 (FAA)

22083

LOC/DME I-IAH	APP CRS	Rwy Idg	9402
109.7	087°	TDZE	95
Chan 34		Apt Elev	96

ILS or LOC RWY 8R

GEORGE BUSH INTCNL/HOUSTON (IAH)

RNAV 1-GPS or RADAR required for procedure entry, DME.

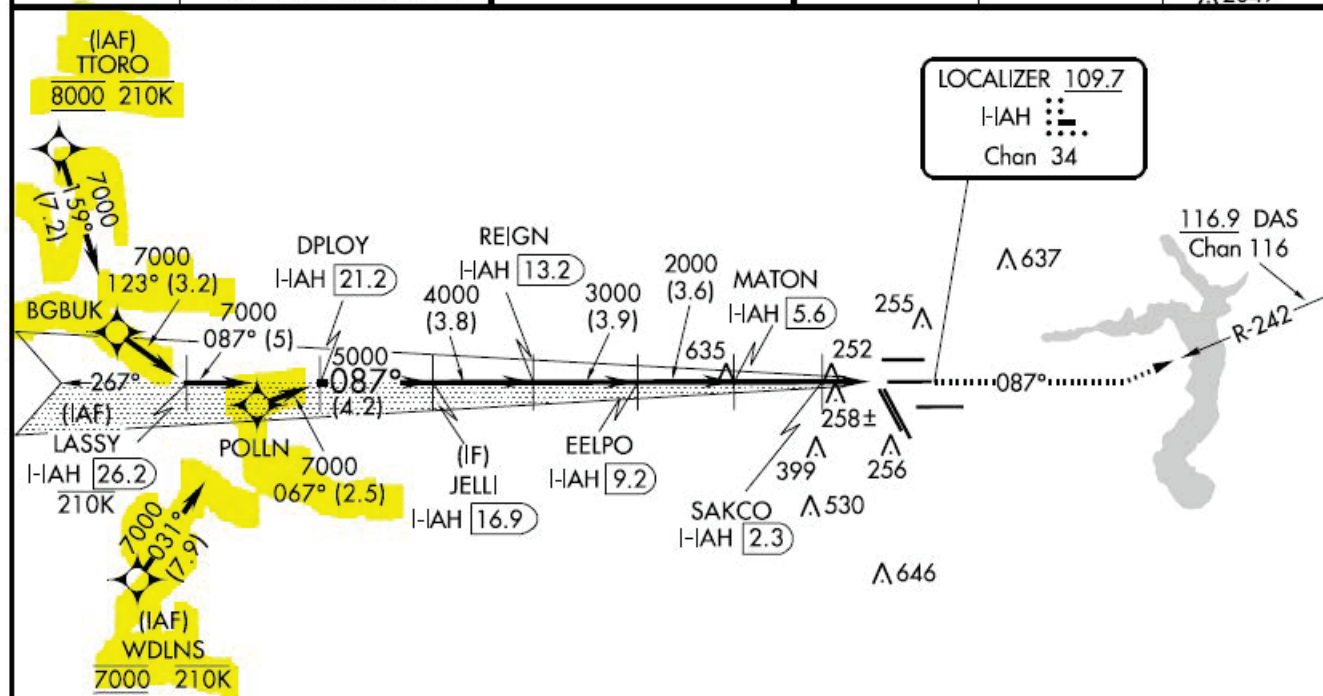
⚠ Simultaneous approach authorized. For inop ALS, increase S-LOC 8R Cat C/D/E visibility to 1 $\frac{3}{8}$ SM. For inop ALS, increase S-ILS 8R Cat E visibility to RVR 4000.

MALSR



MISSED APPROACH: Climb to 3000 on heading 087° and on DAS VORTAC R-242 to DAS VORTAC and hold.

D-ATIS 124.05	HOUSTON APP CON 120.05 379.1 EAST 124.35 316.15 WEST	HOUSTON TOWER 125.35 290.2	GND CON 118.575	CLNC DEL 128.1	CPDLC Δ 2049
-------------------------	--	--------------------------------------	---------------------------	--------------------------	------------------------



22083

ILS or LOC RWY 26L
GEORGE BUSH INTCNL/HOUSTON (IAH)

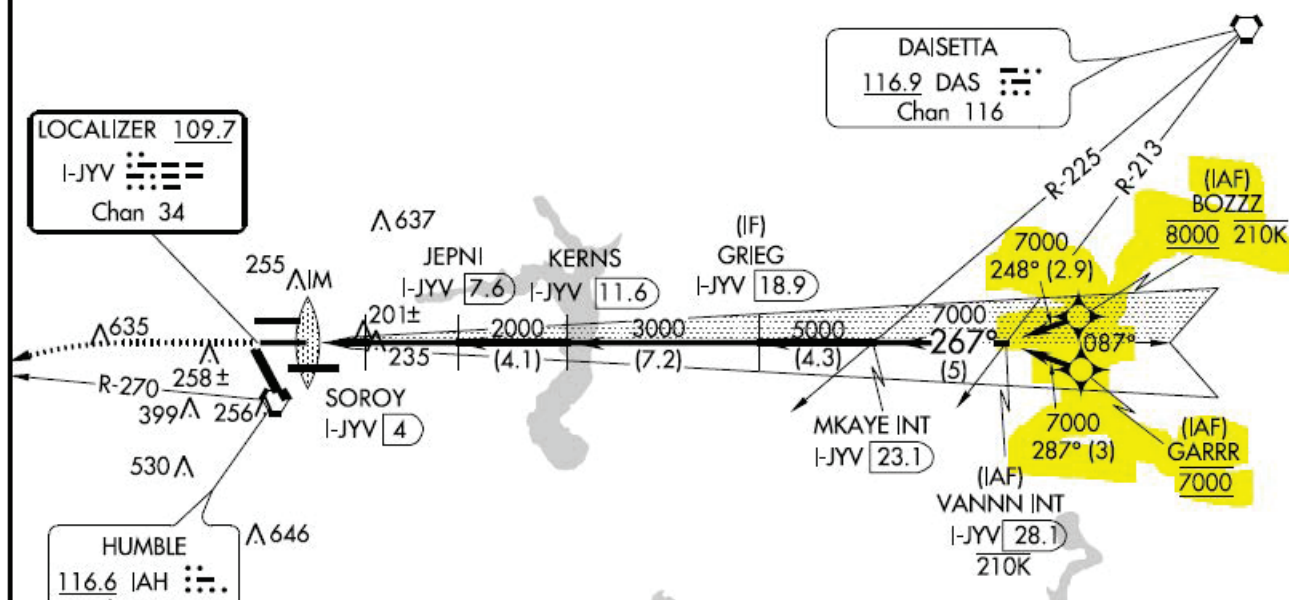
ALSF-2

T Simultaneous approach authorized with Rwy 26R and Rwy 27. For inop ALS, increase S-ILS 26L Cat E visibility to RVR 4000, S-LOC 26L Cat C/D/E visibility to RVR 5000.

MISSED APPROACH: Climb to 3000 then left turn heading 240° and IAH VORTAC R-270 to LUCEP INT/IAH 22.9 DME and hold.

D-ATIS 124.05	HOUSTON APP CON 120.05 379.1 EAST 124.35 316.15 WEST	HOUSTON TOWER 125.35 290.2	GND CON 118.575	CLNC DEL 128.1	CPDLC
------------------	--	-------------------------------	--------------------	-------------------	-------

Λ 2049



HOUSTON, TEXAS

AL-5461 (FAA)

22083

LOC/DME I-OND 111.55 Chan 52 (Y)	APP CRS 267°	Rwy Idg 9000 TDZE 95 Apt Elev 96
--	------------------------	---

ILS or LOC RWY 26R

GEORGE BUSH INTCNL/HOUSTON (IAH)

DME required. From HOOI: RNAV 1-GPS required.

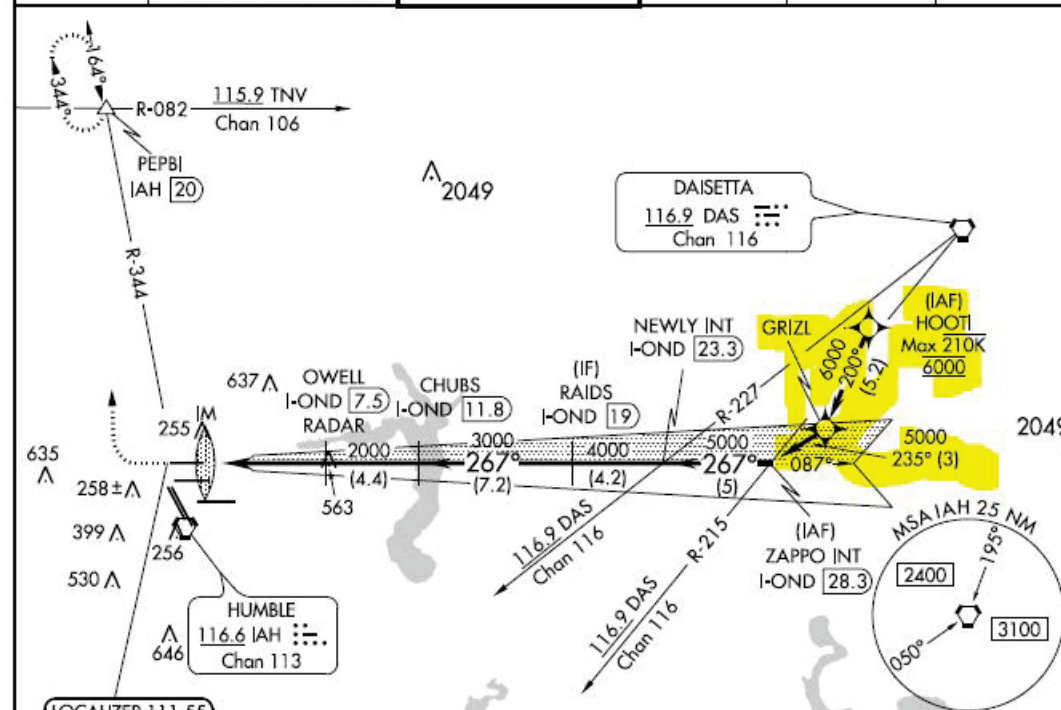
Simultaneous approach authorized with Rwy 26L and Rwy 27. For inop ALS, increase S-ILS 26R Cat E visibility to RVR 4000, and S-LOC 26R Cat C/D/E visibility to 1 $\frac{3}{8}$ SM.

ALSF-2



MISSED APPROACH: Climb to 600 then climbing right turn to 3000 on IAH VORTAC R-344 to PEPBI INT/IAH 20 DME and hold.

D-ATIS 124.05	HOUSTON APP CON 120.05 379.1 EAST 124.35 316.15 WEST	HOUSTON TOWER 120.725 290.2	GND CON 118.575	CLNC DEL 128.1	CPDLC
-------------------------	--	---------------------------------------	---------------------------	--------------------------	-------



HOUSTON, TEXAS

AL-5461 (FAA)

22083

LOC/DME I-GHI 110.9 Chan 46	APP CRS 267°	Rwy Idg 10000 TDZE 86 Apt Elev 96
---	------------------------	--

ILS or LOC RWY 27

GEORGE BUSH INTCNL/HOUSTON (IAH)

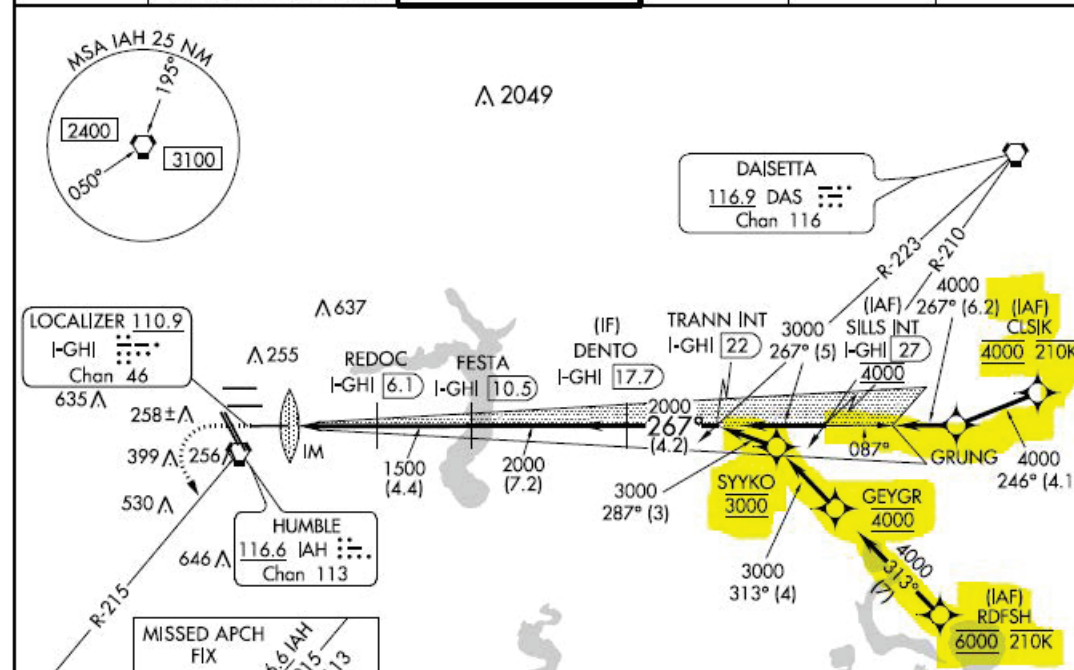
RNAV 1-GPS or RADAR required for procedure entry.
DME required.



MISSED APPROACH: Climb to 560 then
climbing left turn to 3000 on IAH VORTAC
R-215 to TICOF/IAH 20 DME and hold.

Simultaneous approach authorized. Use of FD or AP required during
simultaneous operations. For Inop ALS, increase S-ILS 27 Cat E
visibility to RVR 4000 and S-LOC 27 Cat C-E visibility to 1 1/2 SM.

D-ATIS 124.05	HOUSTON APP CON 120.05 379.1 EAST 124.35 316.15 WEST	HOUSTON TOWER 135.15 290.2	GND CON 118.575	CLNC DEL 128.1	CPDLC
-------------------------	--	--------------------------------------	---------------------------	--------------------------	-------



Airport ID	KIAH
Apt Name	GEORGE BUSH INTERCONTINENTAL
City	HOUSTON
State	TX
Proc ID	GLS RWY 8L
Amdt	2
Scale	1:500,000



Airport ID	KIAH
Apt Name	GEORGE BUSH INTERCONTINENTAL
City	HOUSTON
State	TX
Proc ID	GLS RWY 8L
Amdt	2
Scale	1:100,000

