

Flight Procedures Cover Page	Task Action: Abbreviated Amendment	Task Type: IAP	Estimated Chart Date: 06/12/2025	APWS Task ID: 3A2C80AA3D1D44589FD0E81CCDA4EEF1	APWS Project ID: 85917C4A2DD84CEDA2C1D7B79201225F
Procedure: RNAV (GPS) RWY 36 AMDT 1E		Enroute: NO	Specialist: Smart, Phillip		Agreement Number:
Airport ID: KSBN			Airport City: SOUTH BEND		State: IN
Facility ID:	Facility Type:	Flight Inspection Remark Type:			
<div>Procedure Comments: GSH VORTAC VOR MON - REMOVAL OF INITIAL LEG</div> <div>Processed IAW Technical Support Group (AJF-17) Memo dated 07/07/2021 Guidance for Procedural Changes Requiring Flight Inspection/Validation.</div> <div>CONTACT ROBERT HAMILTON 405-954-4608.</div> <div>QUALITY 9 CHECKED BEGUE</div> <div>QUALITY 40 CHECKED</div>					

OLD

SOUTH BEND, INDIANA

AL-399 (FAA)

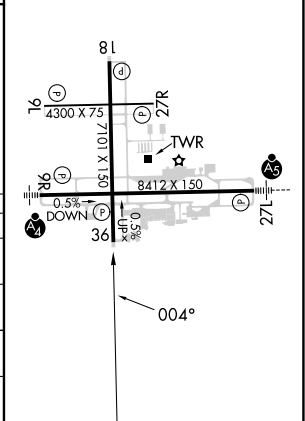
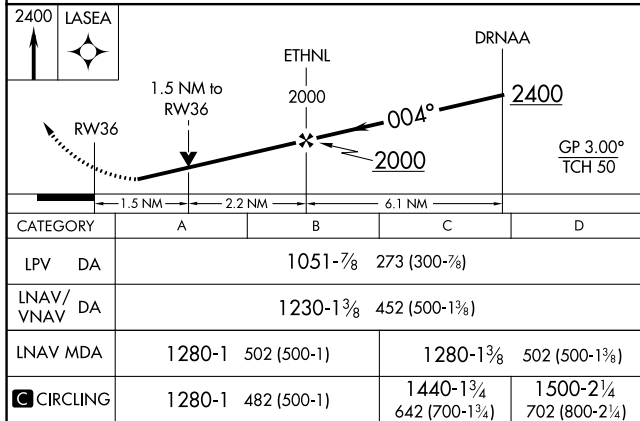
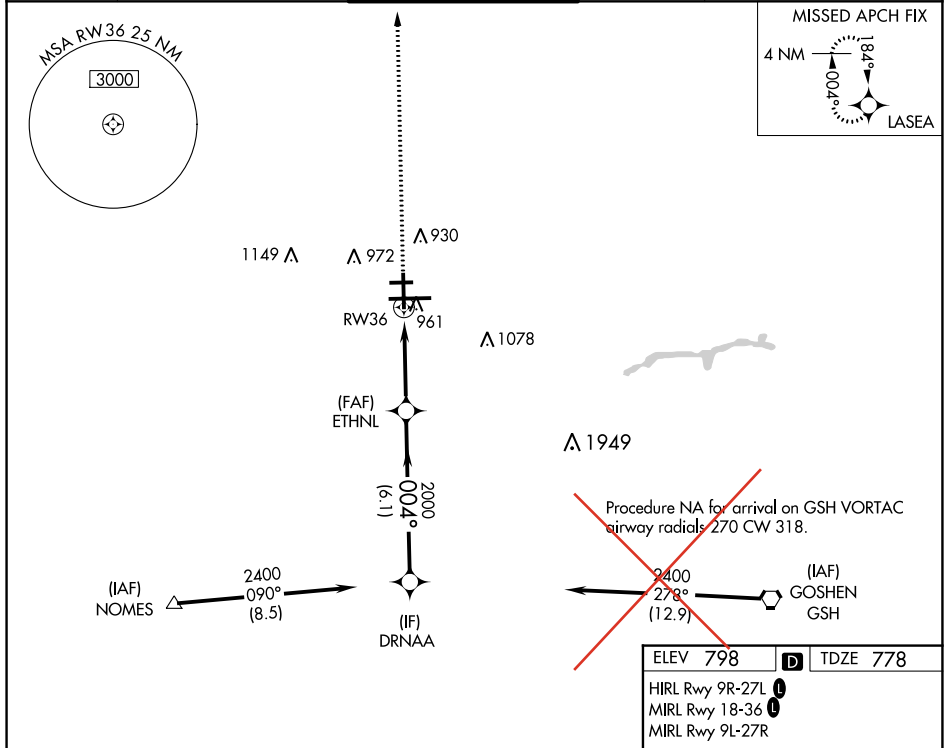
24249

WAAS CH 69514 W36A	APP CRS 004°	Rwy Idg 7101 TDZE 778 Apt Elev 798
--	------------------------	---

RNAV (GPS) RWY 36
SOUTH BEND INTL (SBN)

RNP APCH - GPS.	MISSED APPROACH: Climb to 2400 direct LASEA and hold.
⚠ Circling Rwy 27R NA at night. Rwy 36 helicopter visibility reduction below ¾ SM NA. ⚠ For uncompensated Baro-VNAV systems, LNAV/VNAV NA below -22°C or above 54°C.	

ATIS 120.675	SOUTH BEND APP CON ★ 118.55 257.8	SOUTH BEND TOWER ★ 135.675 (CTAF) 0 257.8	GND CON 121.7	CLNC DEL 121.9
------------------------	---	---	-------------------------	--------------------------



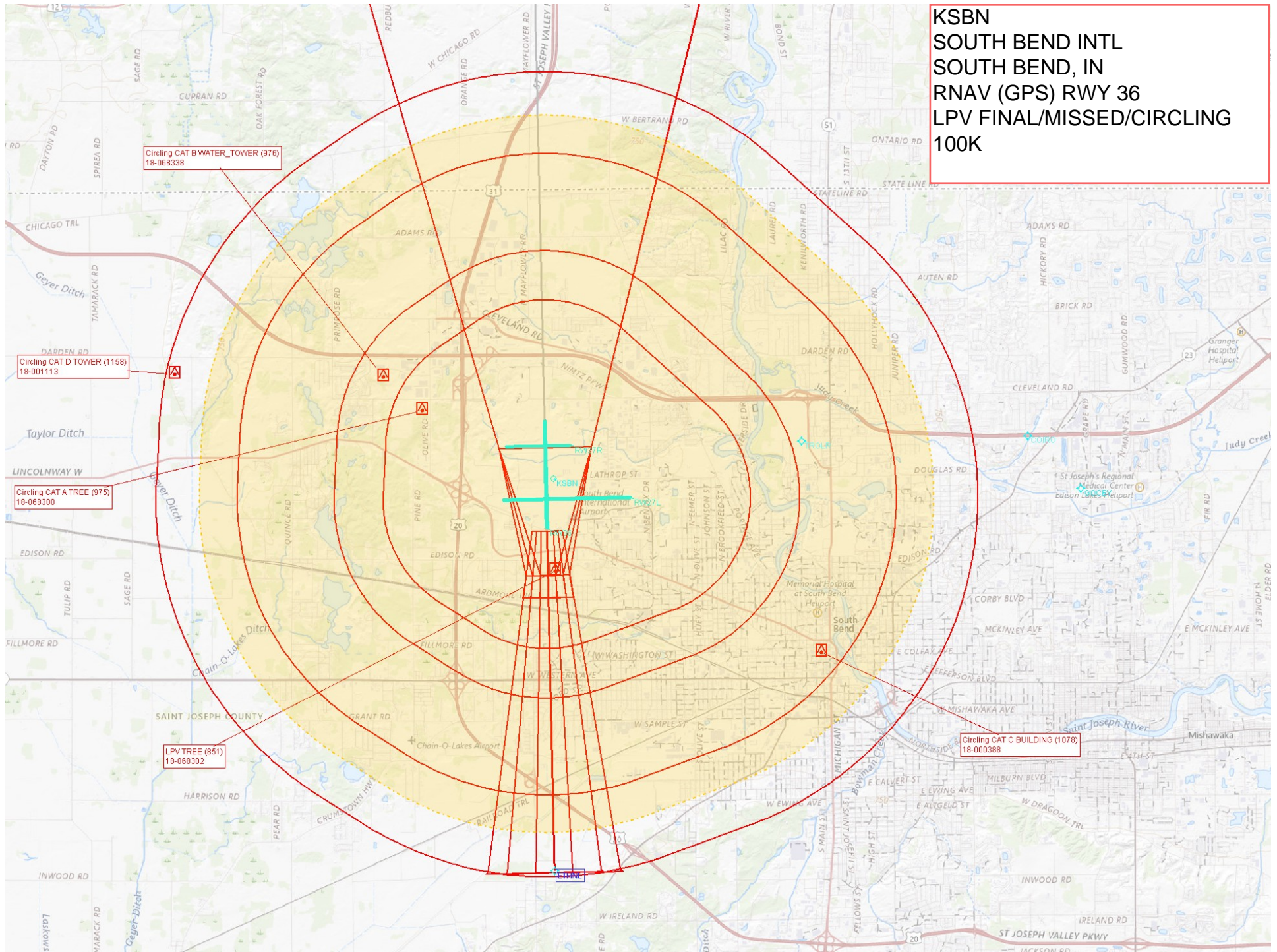
SOUTH BEND, INDIANA
Amdt 1D 16MAY24

41°42'N-86°19'W

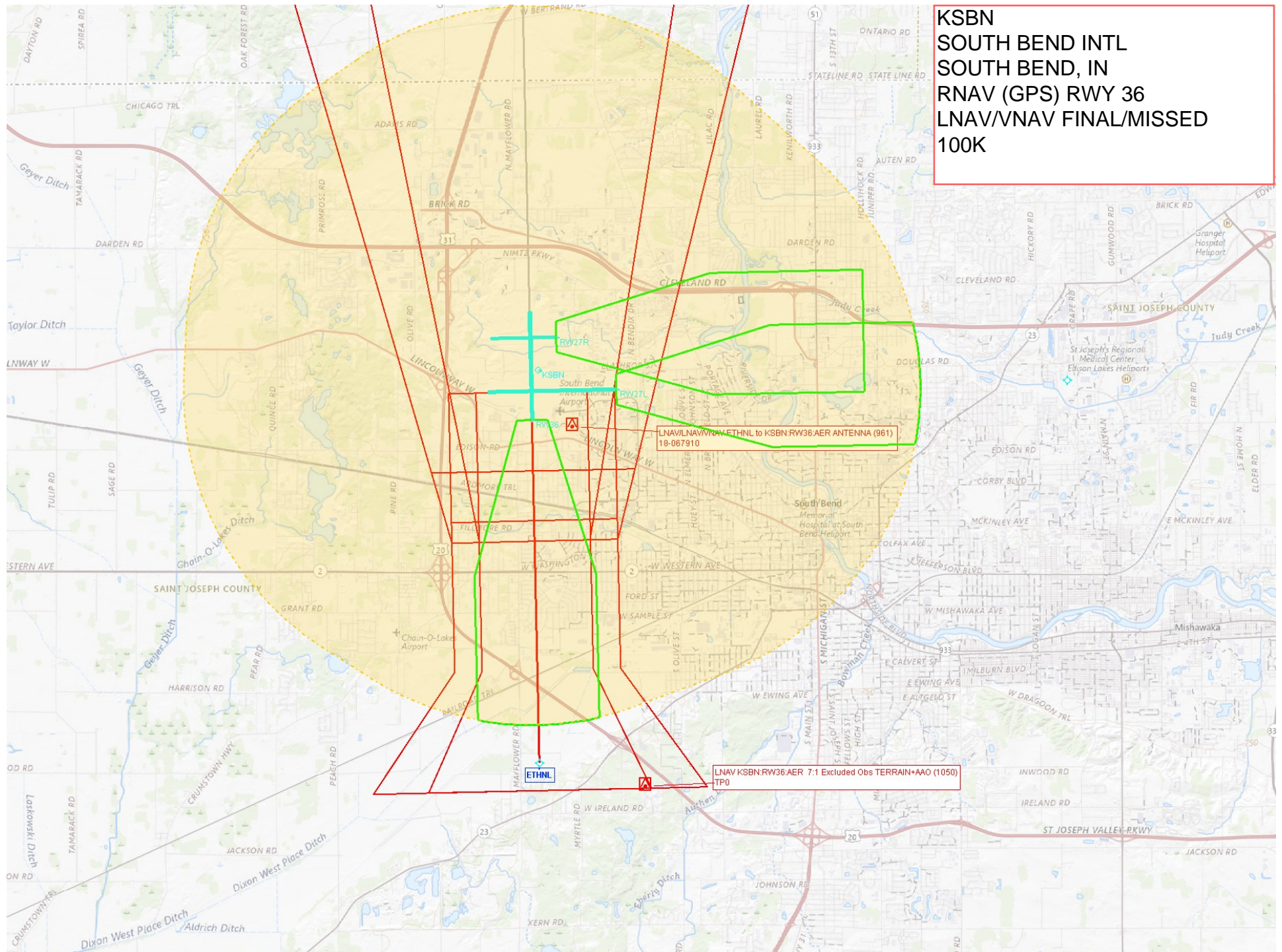
SOUTH BEND INTL (SBN)
RNAV (GPS) RWY 36

EC-2, 03 OCT 2024 to 31 OCT 2024

KSBN
SOUTH BEND INTL
SOUTH BEND, IN
RNAV (GPS) RWY 36
LPV FINAL/MISSED/CIRCLING
100K



KSBN
SOUTH BEND INTL
SOUTH BEND, IN
RNAV (GPS) RWY 36
LNAV/VNAV FINAL/MISSED
100K



KSBN
SOUTH BEND INTL
SOUTH BEND, IN
RNAV (GPS) RWY 36
LNAV FINAL/MISSED
100K

