

Flight Procedures Cover Page	Task Action: FLIGHT CHECK	Task Type: IAP	Estimated Chart Date: 03/21/2024	APWS Task ID: 3944AE59852D4A068D848023D3CB2FFF	APWS Project ID: E3DB64C1BEC745DBAE579DDDEB9C1AB2
Procedure: RNAV (GPS) RWY 31 AMDT 2		Enroute: NO	Specialist: Townsend, Matthew		Agreement Number:
Airport ID: KSTC			Airport City: ST CLOUD		State: MN
Facility ID:	Facility Type:	Flight Inspection Remark Type: New FC Slot			
<div>Procedure Comments: ACTIVE AIRNAV DATA USED FOR AIRPORT AND RUNWAYS.  REMOVE FEEDER, DWN VOR MON.  CRC REMAINDER CHANGED FROM "0A24B1C6" TO "588A36EA".  CONTACT DAVID DANNER, AJV-A421, 405-954-5077.</div> <div>QUALITY 34 CHECKED</div>					

WAAS CH <b>61213</b> <b>W31A</b>	APP CRS <b>313°</b>	Rwy Idg TDZE Apt Elev	<b>7000</b> <b>1020</b> <b>1031</b>
--	------------------------	-----------------------------	---

RNAV (GPS) RWY 31

ST CLOUD RGNL (STC)

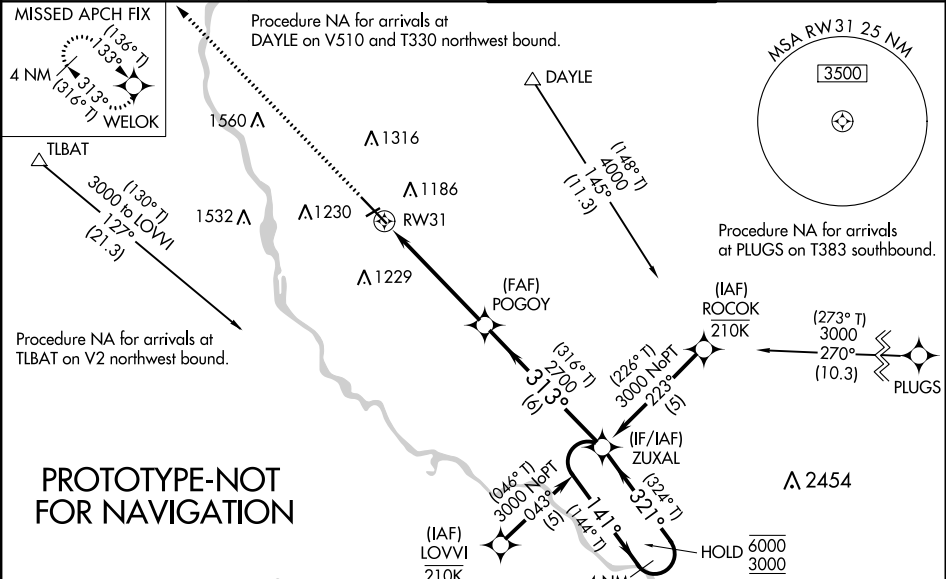
RNP APCH - GPS.

Baro-VNAV and VDP NA when using Little Falls altimeter setting. For uncompensated Baro-VNAV systems, LNAV/VNAV NA below -21°C or above 54°C. For inop ALS when using Little Falls altimeter setting, increase LPV all Cats visibility to ¾ SM and LNAV/VNAV all Cats visibility to 1¾ SM and LNAV Cats C and D visibility to 1¾ SM. When local altimeter setting not received, use Little Falls altimeter setting, increase LPV DA to 1296 feet, increase LNAV/VNAV DA to 1503 feet and all visibilities ¼ SM; increase all MDAs 80 feet and LNAV visibility Cat C and D ¼ SM, and Circling visibility Cat C and D ¼ SM. For inop ALS, increase LNAV/VNAV visibility all Cats to 1¾ SM.

MALSR

MISSED APPROACH:  
Climb to 3000  
direct WELOK  
and hold.

ATIS <b>119.375</b>	MINNEAPOLIS CENTER <b>121.05 235.775</b>	ST. CLOUD TOWER ★ <b>118.25 (CTAF) 0</b>	GND CON <b>123.75</b>
------------------------	---	---	--------------------------



ELEV 1031	TDZE 1020
-----------	-----------

MIRL Rwy 5-23

HIRL Rwy 13-31

WELOK

POGOY

ZUXAL

1.2 NM to RW31

3.9 NM

6 NM

GP 3.00° TCH 50

CATEGORY	A	B	C	D
LPV DA		1220-½	200 (200-½)	
LNAV/VNAV DA		1427-¾	407 (400-¾)	
LNAV MDA	1460-½	440 (500-½)	1460-¾	440 (500-¾)
CIRCLING	1500-1	469 (500-1)	1620-1½	1860-2¾
			589 (600-1½)	829 (900-2¾)



