

Flight Procedures Cover Page	Task Action: Cancellation	Task Type: IAP	Estimated Chart Date: 08/10/2023	APWS Task ID: 392E224044E14ADE9F30AE5A09F65334	APWS Project ID: 07B7838F219A40A7A90F50A2A3130C09
Procedure: RNAV (GPS) RWY 5 AMDT 0C		Enroute: NO	Specialist: Teffeteller, David		Agreement Number:
Airport ID: W32			Airport City: CLINTON		State: MD
Facility ID:	Facility Type:	Flight Inspection Remark Type:			
<div>Procedure Comments: FPT REQUEST TO CANCEL PROCEDURE CONTACT DAVE TEFFETELLER/240-457-1998</div> <div>QUALITY 45 CHECKED</div>					

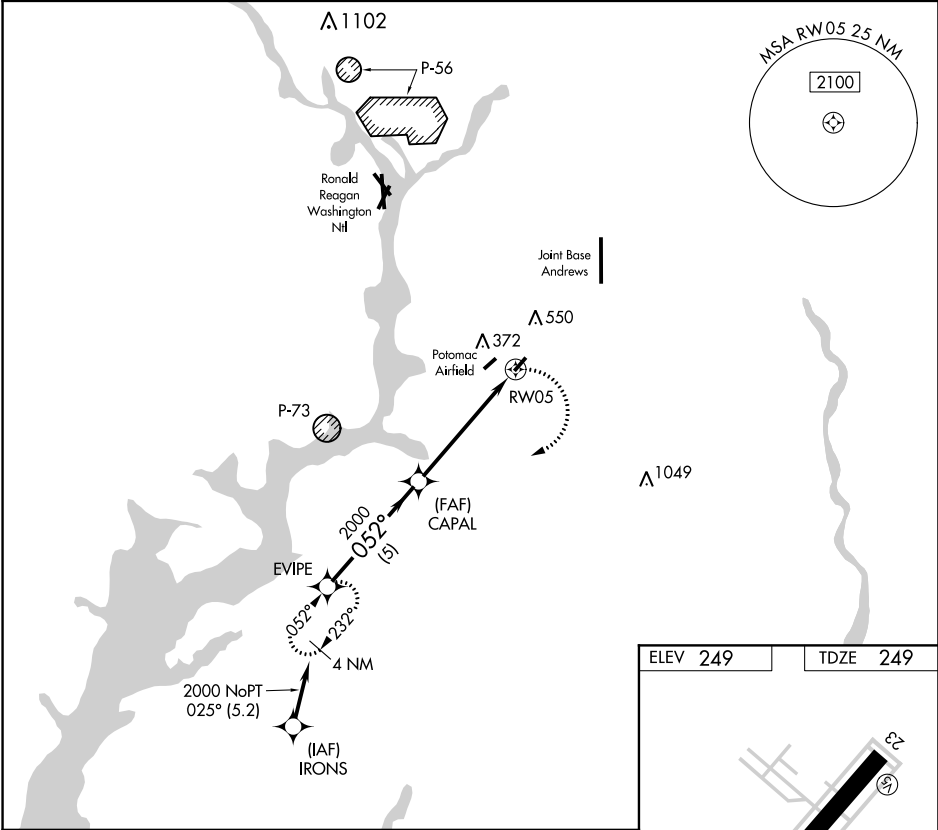
APP CRS	Rwy Idg	3000
052°	TDZE	249
	Apt Elev	249

RNAV (GPS) RWY 5
WASHINGTON EXEC/HYDE FLD (W32)

RNP APCH.	Use Joint Base Andrews altimeter setting. Circling NW Rwy 5-23 NA.
NA	

MISSED APPROACH: Climbing right turn
to 2000 direct EVIPE WP and hold.

KADW ATIS 133.675 251.05	POTOMAC APP CON 124.7 338.2	UNICOM 122.8 (CTAF)
-----------------------------	--------------------------------	------------------------



Procedure Turn NA		VGSI and descent angles not coincident (VGSI Angle 3.50/TCH 19).		2000	EVIPE
EVIPE		CAPAL			
2000		2000			
		3.05° TCH 40			
		RW05			
		5 NM		5.3 NM	
CATEGORY	A	B	C	D	
LNAV MDA	660-1	411 (500-1)	NA		
CIRCLING	680-1	860-1	NA		
	431 (500-1)	611 (700-1)			

