

Flight Procedures Cover Page	Task Action: Abbreviated Amendment	Task Type: IAP	Estimated Chart Date: 10/02/2025	APWS Task ID: 38C52D6DC7004DC9812DFBBB1EEEB25C	APWS Project ID: 325D5F88C6004C1EACA35F404928807E
Procedure: ILS OR LOC RWY 36 AMDT 1A		Enroute: NO	Specialist: Bristow, Travis		Agreement Number:
Airport ID: KDBQ			Airport City: DUBUQUE		State: IA
Facility ID: FUQ	Facility Type: ILS	Flight Inspection Remark Type:			
<div>Procedure Comments: ACTIVE AIR NAV DATA USED.</div> <div>PROCESSED IAW TECHNICAL SUPPORT GROUP (AJF-17) MEMO DATED 07/07/2021 GUIDANCE FOR PROCEDURAL CHANGES REQUIRING FLIGHT INSPECTION/VALIDATION.</div> <div>CLEARs NOTAM: !FDC 5/8014.</div> <div>CONTACT DAVID DANNER, AJV-A421, 405-905-5077.</div> <div>QUALITY 21 CHECKED</div> <div>QUALITY 41 CHECKED</div>					

DUBUQUE, IOWA

AL-923 (FAA)

24249

LOC/DME I-FUQ 110.9 Chan 46	APP CRS 357°	Rwy Idg TDZE 1048 Apt Elev 1077
---	------------------------	---

OLD

ILS or LOC RWY 36

DUBUQUE RGNL (DBQ)

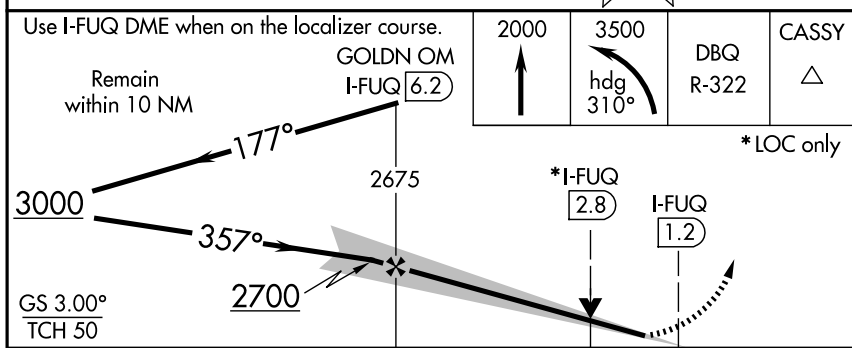
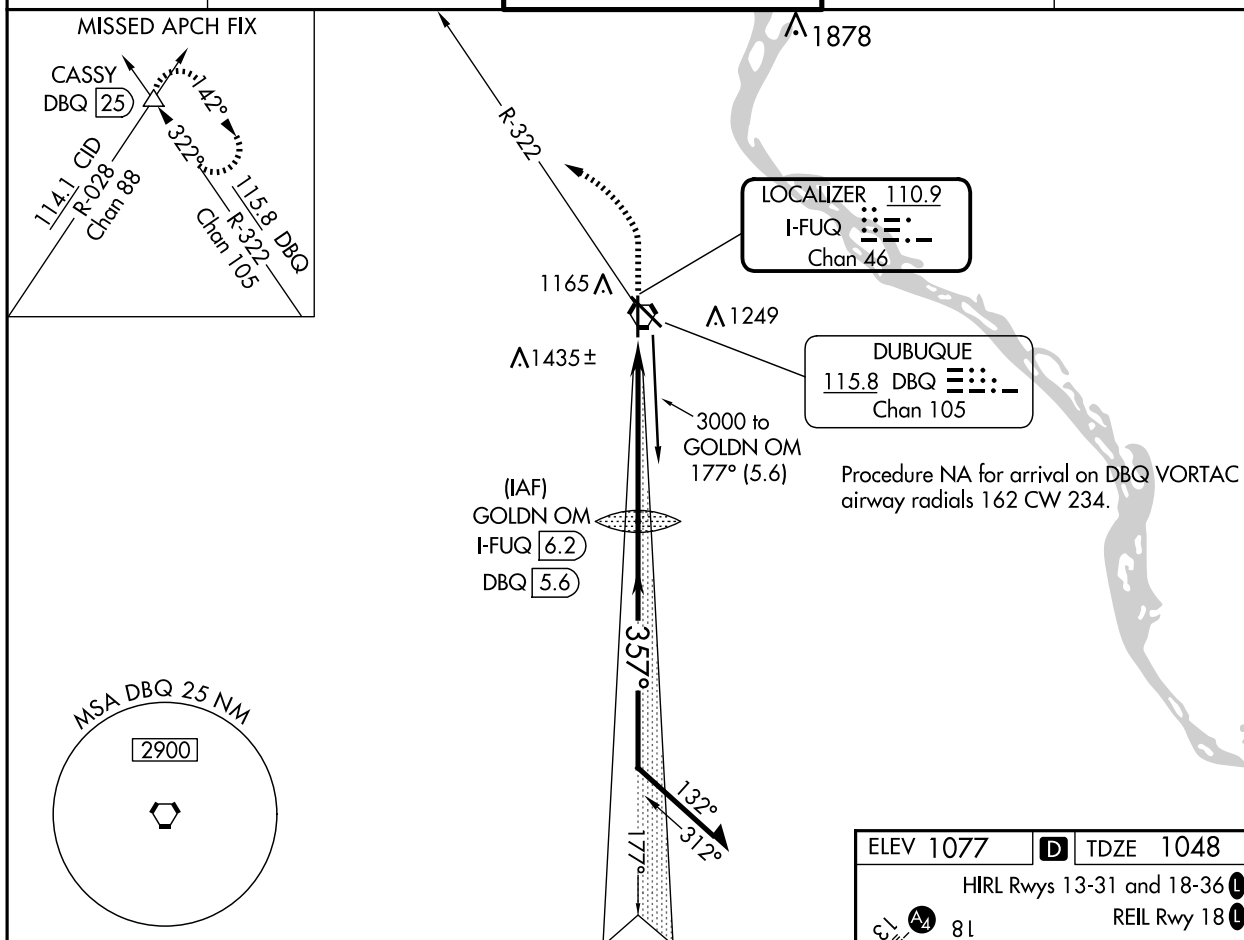
DME or RADAR required for procedure entry.

MALSR

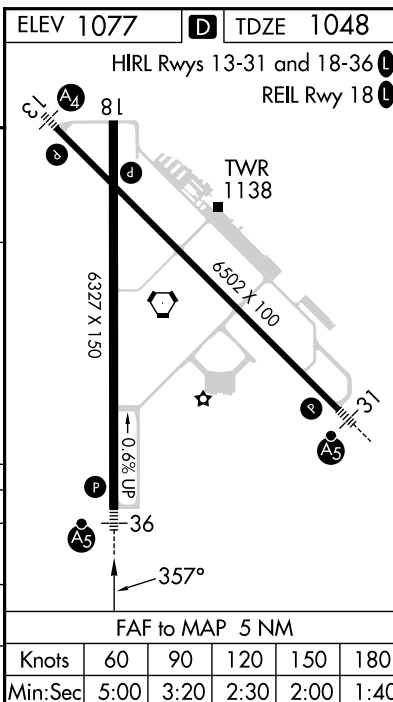
# RVR 1800 authorized with use of
FD or AP or HUD to DA.

MISSED APPROACH: Climb to 2000 then climbing
left turn to 3500 on heading 310° and DBQ R-322
to CASSY INT/DBQ 25 DME and hold.

ATIS 127.25	CHICAGO CENTER 133.95 281.4	DUBUQUE TOWER★ 119.5 (CTAF) 254.4	GND CON 121.8	UNICOM 122.95
-----------------------	---------------------------------------	---	-------------------------	-------------------------



CATEGORY	A	B	C	D
S-ILS 36#	1248/24 200 (200-½)			
S-LOC 36	1580/24 532 (600-½)	1580/55 532 (600-1)		
CIRCLING	1580-1 503 (600-1)	1600-1 523 (600-1)	1600-1½ 523 (600-1½)	1800-2¼ 723 (800-2¼)



DUBUQUE, IOWA
Amdt 1 26MAR20

42°24'N-90°43'W

DUBUQUE RGNL (DBQ)

ILS or LOC RWY 36

NC-3, 17 APR 2025 to 15 MAY 2025

NC-3, 17 APR 2025 to 15 MAY 2025