

Flight Procedures Cover Page	Task Action: FLIGHT CHECK	Task Type: IAP	Estimated Chart Date: 04/17/2025	APWS Task ID: 3836991059E5420092A2C2D65D0F045D	APWS Project ID: ECC268A4624C49408EABC1D9FB2FE5BD
Procedure: RNAV (GPS) RWY 25 AMDT 1		Enroute: NO	Specialist: Johnson, Daniel		Agreement Number:
Airport ID: KCAD			Airport City: CADILLAC		State: MI
Facility ID:	Facility Type:	Flight Inspection Remark Type: New FC Slot			
<div>Procedure Comments: UTILIZED ACTIVE AIRNAV DATA FOR KCAD. REMOVED MOP FEEDER LEG. REPOSITIONED FUNWI AND USOUY TO MEET MINIMUM LEG LENGTH REQUIREMENTS. REPOSITIONED JERRO FOR 3.00 GPA/ 45 TCH. MOP VOR MON. CRC REMAINDER CHANGE. CONTACT ROBERT HAMILTON (405) 954-4608.</div> <div><div>QUALITY 41 CHECKED</div><div>QUALITY 25 CHECKED</div></div>					

CADILLAC, MICHIGAN

WAAS CH 97513 W25A	APP CRS 250°	Rwy Idg TDZE 1305 Apt Elev 1307
--	------------------------	---

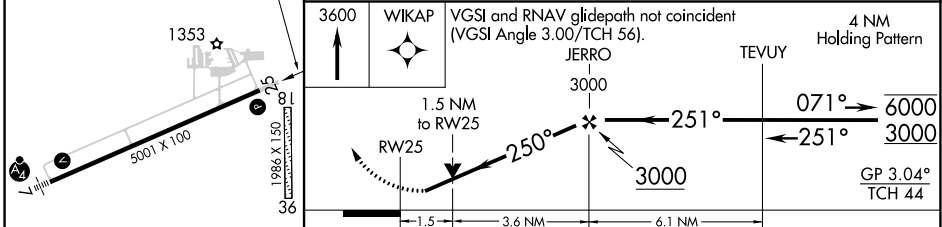
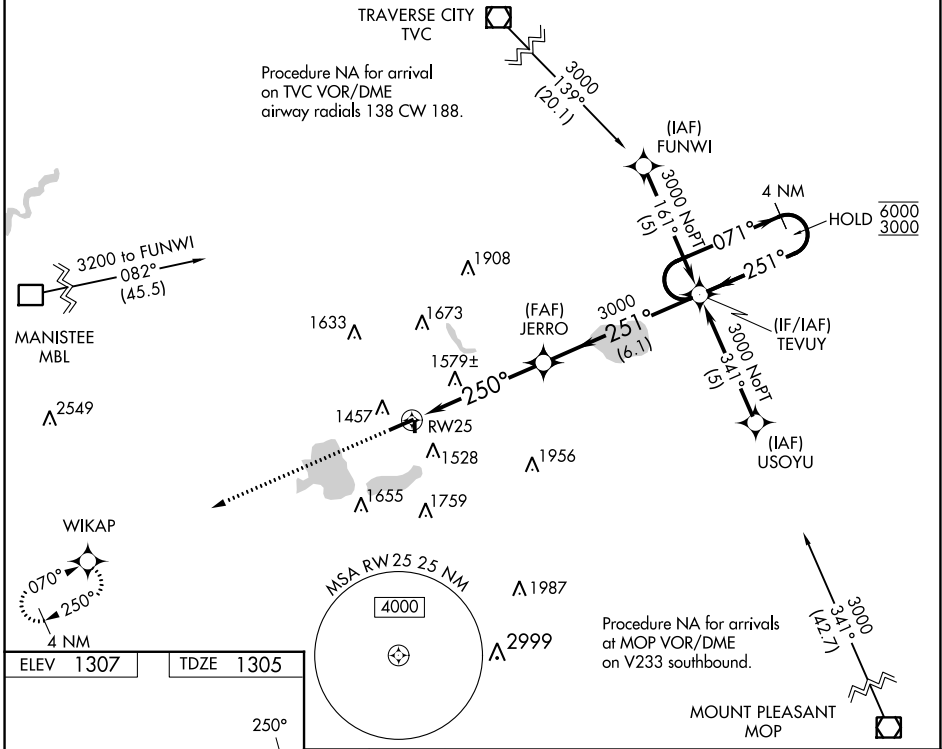
OLD

24193

RNAV (GPS) RWY 25
WEXFORD COUNTY (CAD)

RNP APCH - GPS.	MISSED APPROACH: Climb to 3600 direct WIKAP and hold.
-----------------	---

AWOS-3P 128.325	MINNEAPOLIS CENTER 132.9 338.3	UNICOM 122.8 (CTAF) 0
---------------------------	--	---------------------------------



CATEGORY	A	B	C	D
LPV DA	1625-7/8	320 (400-7/8)		
LNAV/VNAV DA	1869-15/8	564 (600-15/8)		
LNAV MDA	1840-1 535 (600-1)	1840-1 1/2 535 (600-1 1/2)		
CIRCLING	1840-1 533 (600-1)	2040-2 733 (800-2)	2060-2 1/2 753 (800-2 1/2)	

CADILLAC, MICHIGAN
Orig-B 02DEC21

44°17'N-85°25'W

RNAV (GPS) RWY 25

EC-1, 08 AUG 2024 to 05 SEP 2024

EC-1, 08 AUG 2024 to 05 SEP 2024

