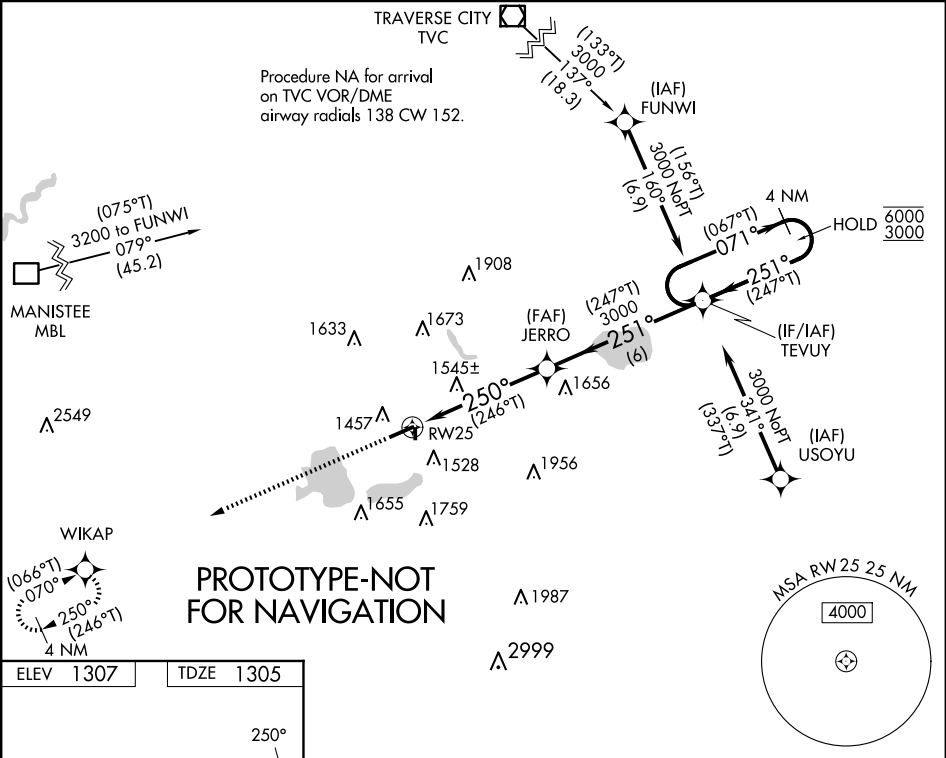


WAAS CH 97513 W25A	APP CRS 250°	Rwy Idg TDZE 1305 Apt Elev 1307
--	------------------------	---

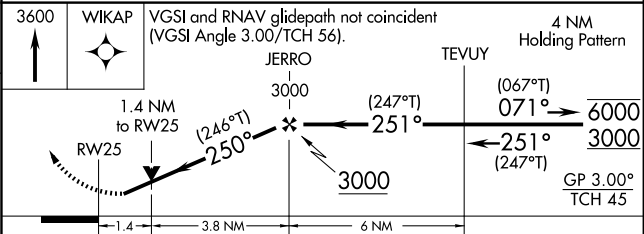
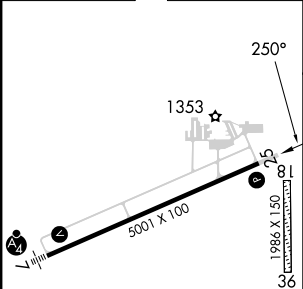
RNAV (GPS) RWY 25
WEXFORD COUNTY (CAD)

RNP APCH - GPS.	For uncompensated Baro-VNAV systems, LNAV/VNAV NA below -22°C or above 54°C. Rwy 25 helicopter visibility reduction below ¾ SM NA. Circling NA to Rwys 18 and 36.	MISSED APPROACH: Climb to 3600 direct WIKAP and hold.
-----------------	--	---

AWOS-3P 128.325	MINNEAPOLIS CENTER 132.9 338.3	UNICOM 122.8 (CTAF) 0
---------------------------	--	---------------------------------



ELEV 1307	TDZE 1305
-----------	-----------



CATEGORY	A	B	C	D
LPV DA		1555-¾	250 (300-¾)	
LNAV/VNAV DA		1800-1½	495 (500-1½)	
LNAV MDA	1800-1	495 (500-1)	1800-1½	495 (500-1½)
CIRCLING	1840-1	533 (600-1)	2040-2 733 (800-2)	2060-2½ 753 (800-2½)

HIRL Rwy 7-25 0
REIL Rws 7 and 25 0