

Flight Procedures Cover Page	Task Action: FLIGHT CHECK	Task Type: IAP	Estimated Chart Date: 02/25/2021	APWS Task ID: 3817D0B1CDC849DEAB0BD7E3405D53B2	APWS Project ID: F6318DEA17A54A48B5E7EA9F2FA6B040
Procedure: RNAV (GPS) RWY 23 AMDT 1D		Enroute: NO	Specialist: Bradshaw, Henry		Agreement Number:
Airport ID: KGLD	Airport Name: RENNER FLD /GOODLAND MUNI/		Airport City: GOODLAND		State: KS
Facility ID:	Facility Type:	Flight Inspection Remark Type: New FC Slot			

Procedure Comments:
UPDATE MINIMUMS AND NOTES FOR NEW SURVEY DATA.

INCORPORATED P-NOTAM 9/5497, 6/7991, 4/4924.

NEW LNAV CONTROLLING OBSTACLE - 3838 MSL TOWER, 392430.44N/1013800.67W.

NEW CIRCLING CONTROLLING OBSTACLES:
CAT A - ANTENNA 392255.55N/1014335.79W.
CAT B - AG EQUIP 392406.10N/1014233.20W.
CAT C - RIG 392046.53N/1014522.97W.

PROCESSED IAW AIRCRAFT OPERATIONS GROUP (AJF-1000) MEMO, DATED JUNE 4, 2020, SUBJECT: FLIGHT INSPECTION OF NEW CONTROLLING OBSTACLES.

ABBREVIATED AMENDMENT COMPLETED USING ACTIVE DATA.

CONTACT JASON KRETSCHMER (AJV-A421) 405-954-4019.

Digitally signed by
JASON KRETSCHMER
Dec 01, 2020

APP CRS
234°

Rwy Idg **3502**
TDZE **3655**
Apt Elev **3657**

RNAV (GPS) RWY 23

RENNER FIELD/GOODLAND MUNI (GLD)

RNP APCH.



Circling NA to Rwy 17 and 35. Circling NA south of Rwy 17 and 35.

MISSED APPROACH:
Climbing left turn to 5600
direct HEGOR and hold.

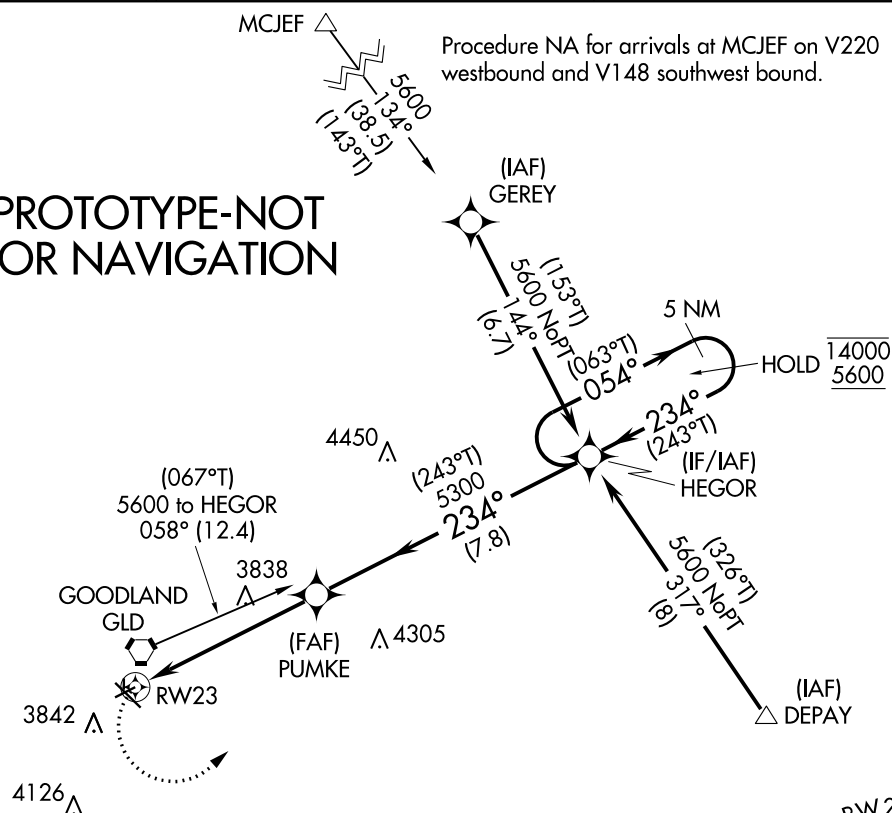
ASOS
121.025

DENVER CENTER
132.7 226.675

UNICOM
122.8 (CTAF) 1

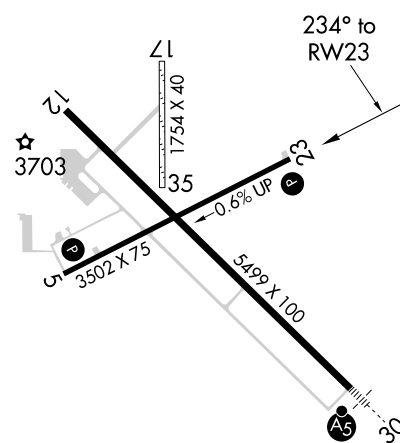
PROTOTYPE-NOT
FOR NAVIGATION

Procedure NA for arrival
on GLD VORTAC airway
radials 084 CW 140.



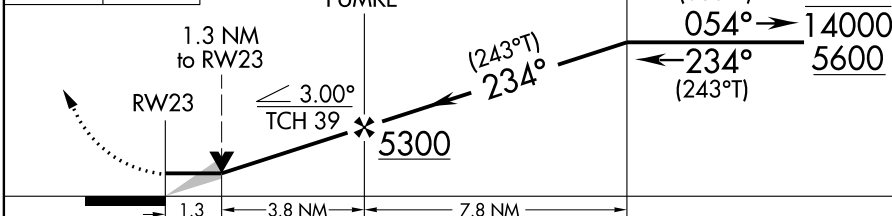
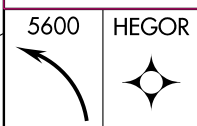
ELEV 3657

TDZE 3655



REIL Rwy 12 1

MIRL Rwy 5-23 and 12-30 1



CATEGORY	A	B	C	D
LNAV MDA	4080-1	425 (500-1)	4080-1¼ 425 (500-1¼)	NA
CIRCLING	4080-1 423 (500-1)	4120-1 463 (500-1)	4120-1½ 463 (500-1½)	NA

APP CRS	Rwy Idg	3502
234°	TDZE	3655
	Apt Elev	3657

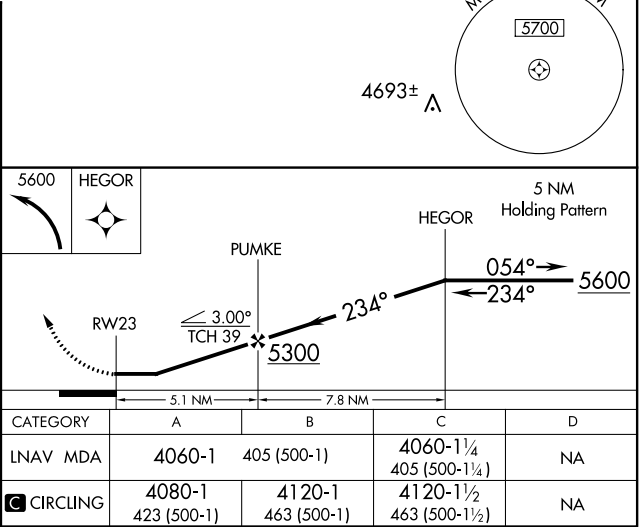
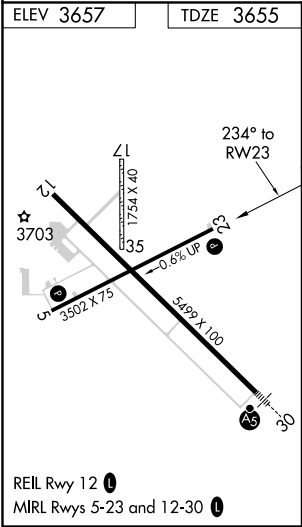
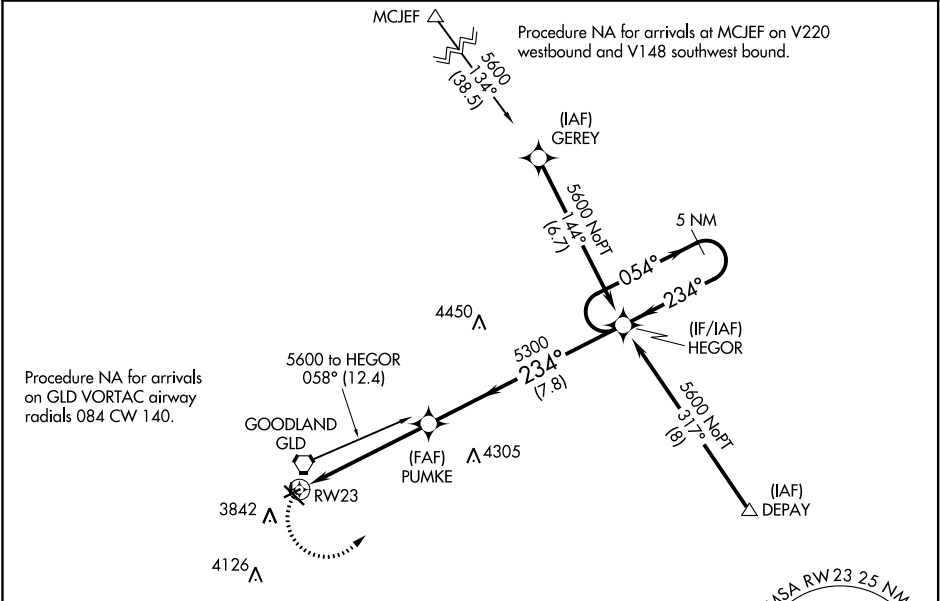
RNAV (GPS) RWY 23

RENNER FIELD/GOODLAND MUNI (GLD)

⚠ Circling NA south of Rwy 5 and 30. DME/DME RNP-0.3 NA. Straight-in Rwy 23 NA at night. VDP NA with Burlington, CO altimeter setting. When local altimeter setting not received, use Burlington, CO altimeter setting and increase all MDA 160 feet. Increase LNAV and Circling Cat C visibility to 1¼ mile. Rwy 23 helicopter visibility reduction below 1 SM NA. Circling Rwy 5, 23 NA at night. Circling NA to Rwy 17 and 35.

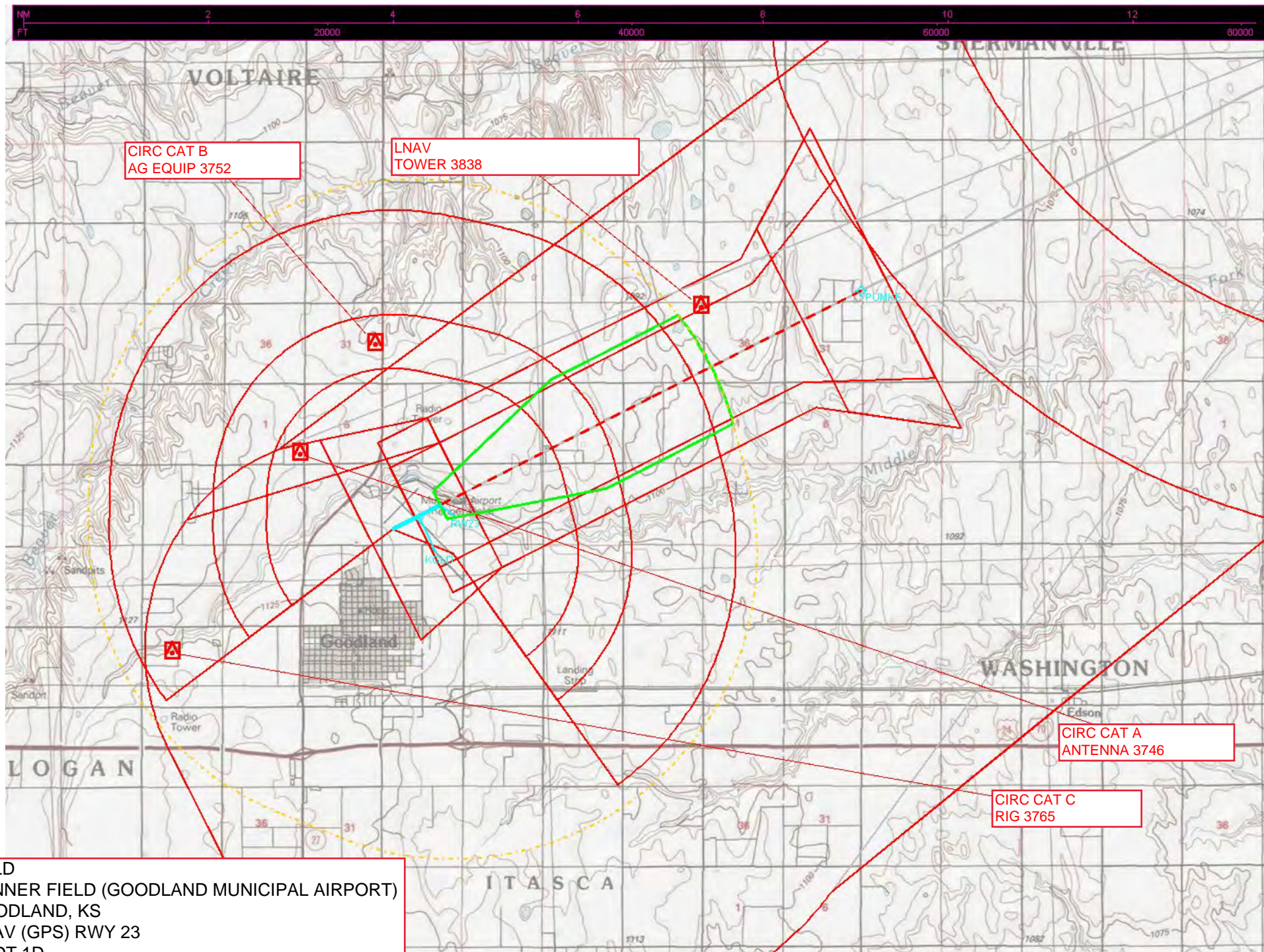
MISSED APPROACH:
Climbing left turn to 5600
direct HEGOR and hold.

ASOS 121.025	DENVER CENTER 132.7 226.675	UNICOM 122.8 (CTAF) 0
-----------------	--------------------------------	--------------------------



NC-2, 13 AUG 2020 to 10 SEP 2020

NC-2, 13 AUG 2020 to 10 SEP 2020



KGLD
RENNER FIELD (GOODLAND MUNICIPAL AIRPORT)
GOODLAND, KS
RNAV (GPS) RWY 23
AMDT 1D
LNAV AND CIRCLING
100000:1