

Flight Procedures Cover Page	Task Action: P-NOTAM	Task Type: IAP	Estimated Chart Date: 09/09/2021	APWS Task ID: 37F7E2CCBF134EC58755A246B2F46AD3	APWS Project ID: 54A85481B47444DDAED8C6AE677A097E
Procedure: RNAV (GPS) RWY 27 AMDT 0C		Enroute: NO	Specialist: Moore, Frank		Agreement Number:
Airport ID: KGDW			Airport City: GLADWIN		State: MI
Facility ID:	Facility Type:	Flight Inspection Remark Type:			
<div>Procedure Comments: P-NOTAM This Cancels FDC 0/9873 Order 8260.3, chapter 2, New Circling Criteria Applied.  CONTACT DAVE TEFFETELLER 202-267-5177</div> <div>QUALITY 45 CHECKED</div> <div>QUALITY 38 CHECKED</div>					

# OLD

GLADWIN, MICHIGAN

AL-6672 (FAA)

20254

WAAS CH <b>99326</b> <b>W27A</b>	APP CRS <b>272°</b>	Rwy Idg TDZE Apt Elev <b>4699</b> <b>773</b> <b>774</b>
--	------------------------	--

## RNAV (GPS) RWY 27

GLADWIN ZETTEL MEMORIAL (GDW)

RNP APCH.

**NA** Circling NA to Rwy 15 and 33. Rwy 27 helicopter visibility reduction below 1 SM NA. DME/DME RNP-0.3 NA. Procedure NA at night. Use Mount Pleasant altimeter setting; when not received, use Midland altimeter setting and increase all MDA 20 feet; increase LP and LNAV Cats C/D visibility  $\frac{1}{8}$  SM And Circling Cats C/D visibility  $\frac{1}{4}$  SM.

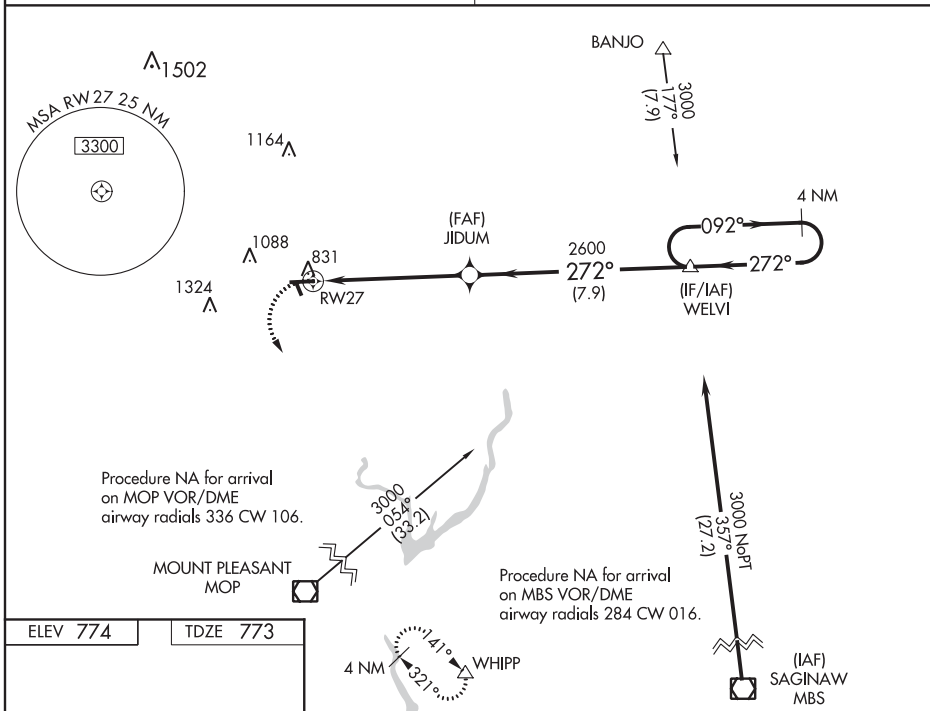
**MISSED APPROACH:**  
Climbing left turn to 2600 direct WHIPP and hold.

GREAT LAKES APP CON ★  
**126.45 235.625**

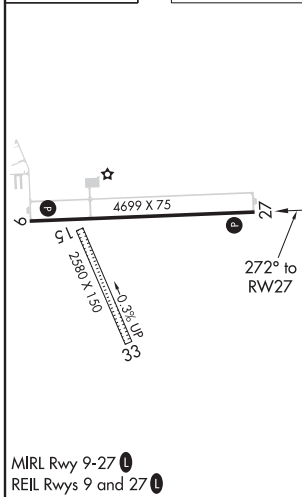
UNICOM  
**122.8 (CTAF) 1**

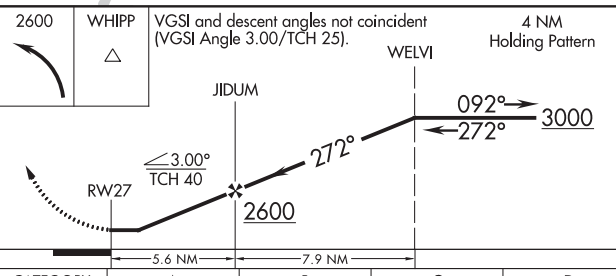
EC-1, 25 MAR 2021 to 22 APR 2021

EC-1, 25 MAR 2021 to 22 APR 2021



ELEV 774 TDZE 773



2600	WHIPP △	VGSI and descent angles not coincident (VGSI Angle 3.00/TCH 25).		4 NM Holding Pattern
				
CATEGORY	A	B	C	D
LP MDA	1280-1	507 (600-1)	1280-1 $\frac{3}{8}$	507 (600-1 $\frac{3}{8}$ )
LNAV MDA	1280-1	507 (600-1)	1280-1 $\frac{3}{8}$	507 (600-1 $\frac{3}{8}$ )
CIRCLING	1420-1 646 (700-1)	1500-1 726 (800-1)	1500-2 726 (800-2)	1500-2 $\frac{1}{4}$ 726 (800-2 $\frac{1}{4}$ )

GLADWIN, MICHIGAN  
Orig-B 29MAR18

43°58'N - 84°29'W

GLADWIN ZETTEL MEMORIAL (GDW)  
**RNAV (GPS) RWY 27**

