

Flight Procedures Cover Page	Task Action: FLIGHT CHECK	Task Type: IAP	Estimated Chart Date: 08/10/2023	APWS Task ID: 37BAB35D1C784904A6B18C02686790C3	APWS Project ID: 6819815D3B124FD0850AEBC48140A64E
Procedure: RNAV (GPS) RWY 16 AMDT 1		Enroute: NO	Specialist: Young, Silvia		Agreement Number:
Airport ID: PAGM			Airport City: GAMBELL		State: AK
Facility ID:	Facility Type:	Flight Inspection Remark Type: New FC Slot			
<div>Procedure Comments:</div> <div>ACTIVE DATA USED FOR PAGM AIRPORT AND RWYS.</div> <div>CONTACT CASIMIR TABAKA 405.202.7857</div> <div>QUALITY 9 CHECKED</div> <div>QUALITY 10 CHECKED</div>					

<b>FIPC BASIC FORM</b>									
<b>PROCEDURE:</b> RNAV (GPS) RWY 16 AMDT 1				<b>AIRPORT NAME:</b> GAMBELL		<b>AIRPORT ID:</b> PAGM		<b>SPECIAL CONTROL NO:</b> KG-04-090-23	
<b>FAC ID:</b> PAGM16.01			<b>CITY:</b> GAMBELL			<b>ST:</b> AK		<b>ORIG CHART DATE:</b> 08/10/2023	
<b>DFL TYPE:</b> PROC/S		<b>THIRD PARTY:</b> <input type="checkbox"/> YES		<b>EST. TIME ON SITE:</b> 0.4		<b>REIMB. NUMBER:</b>		<b>PTS TASK ID:</b> 37BAB35D1C784904A6B18C02686790C3	
<b>PREFLIGHT NOTES</b>									
<b>REVIEWER:</b>							<b>DATE:</b>		
<b>COMMENTS:</b>							<b>CHECK ONE:</b>		
							<input type="checkbox"/> FLT CK REQ <input type="checkbox"/> NFCR <input type="checkbox"/> REJECT		
									<b>YES</b>
							<b>CPV COMPLETE?</b>		<b>X</b>
<b>PROCEDURE RESULTS</b>									
<b>INSPECTION DATE:</b> 04/25/2023		<b>CREW #:</b> VN239		<b>N #:</b> N90		<b>INSTRUMENT PROCEDURE STATUS:</b> <input checked="" type="checkbox"/> SAT <input type="checkbox"/> SAT W/CHANGES <input type="checkbox"/> UNSAT		<b>ARINC CODING:</b> <input type="checkbox"/> SAT <input checked="" type="checkbox"/> SAT/GOLD <input type="checkbox"/> UNSAT	
<b>FLIGHT INSPECTOR SIGNATURE:</b> daniel stricker @ 04/26/2023 16:59				<b>PRINTED NAME:</b> STRICKER, DANIEL EDWARD				<b>NOTAM INITIATED?</b> <input type="checkbox"/> YES <input checked="" type="checkbox"/> NO	
<b>FLIGHT INSPECTOR REMARKS:</b>									
<b>IN-FLIGHT OBSTACLE REPORT</b>									
<b>OBSTRUCTION ID #:</b>		<b>COORDINATES OR LOCATION:</b>		<b>GNSS ALTITUDE (MSL):</b>		<b>BAROMETRIC ALTITUDE (MSL):</b>		<b>HEIGHT ABOVE GROUND LEVEL:</b>	

GAMBELL, ALASKA

AL-6687 (FAA)

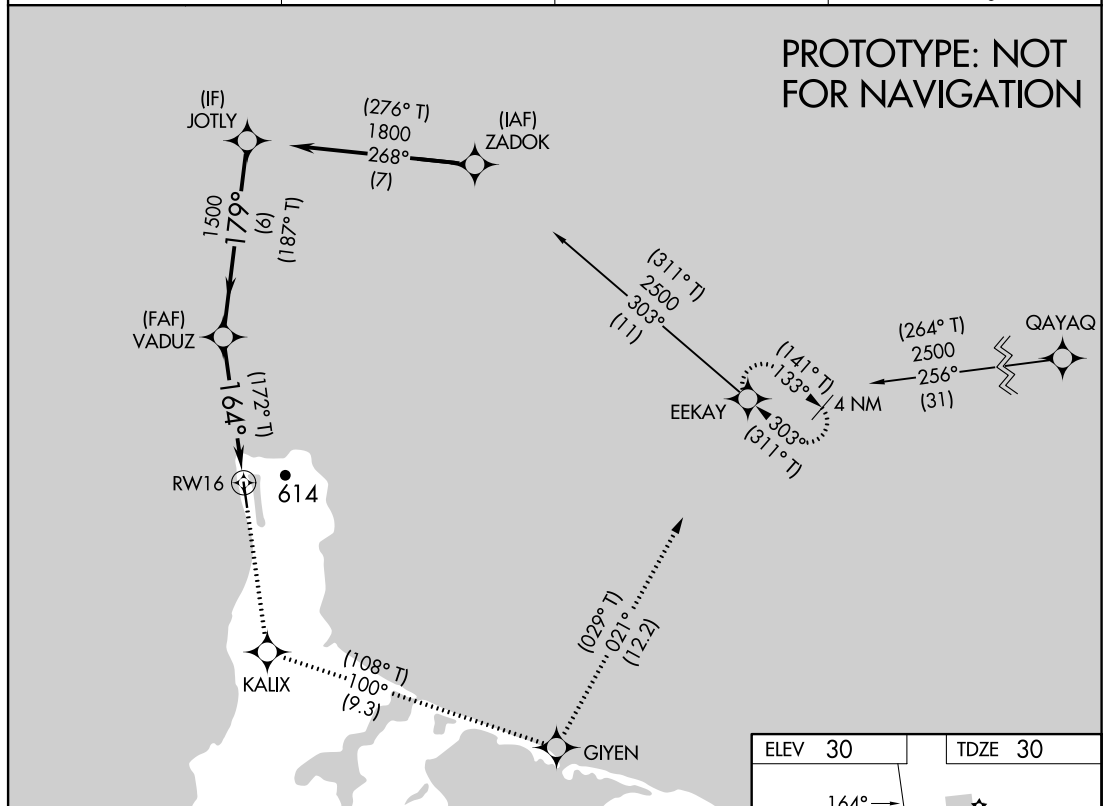
FIG

WAAS CH <b>86635</b> <b>W16A</b>	APP CRS <b>164°</b>	Rwy Idg TDZE Apt Elev <b>4500</b> <b>30</b> <b>30</b>
--	------------------------	--

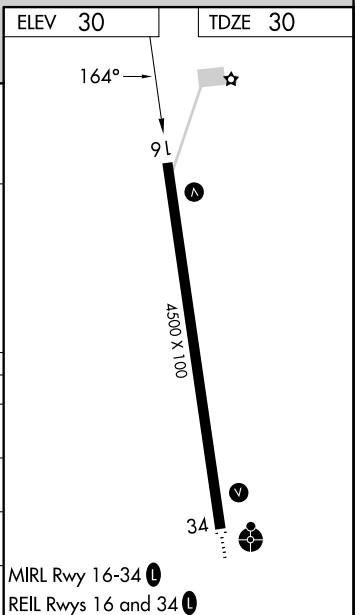
# RNAV (GPS) RWY 16

GAMBELL (GAM) (PAGM)

RNP APCH - GPS.		MISSED APPROACH: Climb to 2500 direct KALIX then left turn on track 100° to GIYEN and on track 021° to EEKAY and hold.	
	Circling NA east of Rwy 16-34. For uncompensated Baro-VNAV systems, LNAV/VNAV NA below -20°C or above 54°C.		
AWOS-3P <b>125.9</b>	ANCHORAGE CENTER <b>132.2 281.4</b>	NOME RADIO <b>122.0</b>	CTAF <b>122.7 0</b>



JOTLY		2500	KALIX	GIYEN	EEKAY
1800		↑	↻	↻	↻
GP 3.00°		↑	trk 100°	trk 021°	
TCH 37					
6 NM		3.1 NM	1.4 NM		
CATEGORY	A	B	C	D	
LPV DA		230-1	200 (200-1)		
LNAV/VNAV DA		523-1 $\frac{3}{8}$	493 (500-1 $\frac{3}{8}$ )		
LNAV MDA	520-1	490 (500-1)	520-1 $\frac{3}{8}$	490 (500-1 $\frac{3}{8}$ )	
CIRCLING	520-1	490 (500-1)	520-1 $\frac{1}{2}$ 490 (500-1 $\frac{1}{2}$ )	660-2 630 (700-2)	



AUTOMATED AL-6687 RNAV (GPS) RWY 16

AK  
6 APR 2023  
COMPILER: CG  
REVIEWER:  
DBL CHKR:  
EFF: FIG

GAMBELL, ALASKA

Amdt1 FIG

63°46'N-171°44'W

GAMBELL (GAM) (PAGM)  
RNAV (GPS) RWY 16

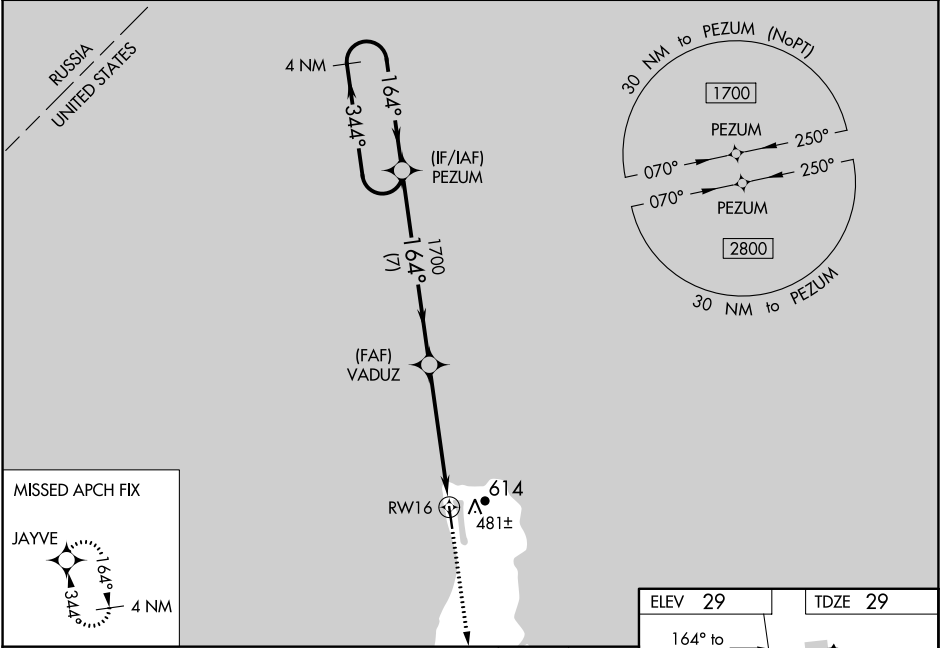
WAAS CH <b>86635</b> <b>W16A</b>	APP CRS <b>164°</b>	Rwy Idg <b>4500</b> TDZE <b>29</b> Apt Elev <b>29</b>
--	------------------------	---

RNAV (GPS) RWY 16  
GAMBELL (GAM) (PAGM)

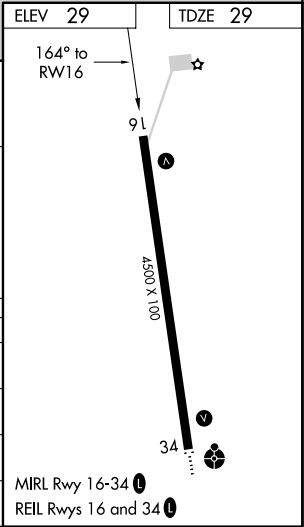
**⚠** Baro-VNAV NA when using Savoonga altimeter setting. For uncompensated Baro-VNAV systems, LNAV/VNAV NA below -20°C (-4°F) or above 54°C (130°F). Circling NA northeast of Rwy 16-34. DME/DME RNP-0.3 NA. VDP NA with Savoonga altimeter setting. When local altimeter setting not received, use Savoonga altimeter setting and increase all DA 82 feet and MDA 100 feet. Increase LPV all Cats visibility ¼ mile. Increase LNAV/VNAV all Cats visibility ⅜ mile. Increase LNAV Cat A visibility ¼ mile. Increase Circling Cat A and C visibility ¼ mile, Cat D visibility ½ mile.

**MISSED APPROACH:**  
Climb to 3000 direct JAYVE and hold.

AWOS-3P <b>125.9</b>	ANCHORAGE CENTER <b>132.2 281.4</b>	NOME RADIO <b>122.0</b>	CTAF <b>122.7 0</b>
-------------------------	--	----------------------------	------------------------



4 NM Holding Pattern		PEZUM	VADUZ	3000	JAYVE
1700 ← 344°		164° →	1700	* 2.4 NM to RWY 16	
GP 3.00°		1700		* LNAV only.	
TCH 37		7 NM	2.8 NM	2.4 NM	
CATEGORY	A	B	C	D	
LPV DA	279-7⁄8 250 (300-7⁄8)				
LNAV/VNAV DA	578-17⁄8 549 (600-17⁄8)				
LNAV MDA	820-1 791 (800-1)	820-1¼ 791 (800-1¼)	820-2½ 791 (800-2½)	791 (800-2½)	
CIRCLING	820-1 791 (800-1)	820-1¼ 791 (800-1¼)	860-2½ 831 (900-2½)	831 (900-2½)	



PAGM  
GAMBELL  
GAMBELL, AK  
RNAV (GPS) RWY 16 A1  
LPV ASC  
1:100,000

Missed Level Surface  
TREE (611)

VADUZ

RW16

PAGM

RW34



Search for  
Obstacles  
Obstacles  
Obstacles

KALIX

HOOPER FERRY MARINE AIRPORT

ALASKA

PAGM  
GAMBELL  
GAMBELL, AK  
RNAV (GPS) RWY 16 A1  
LNAV/VNAV FINAL  
1:100,000

LNAV/VNAV VADUZ to PAGM:RW16:AER  
TREE (509)

LNAV/VNAV Missed Adj  
TREE (509)

Missed Level Surface  
TREE (611)

VADUZ

RW16

PAGM

RW34

KALIX

HOLDING PATTERN

GRASP (7000) 1000

ALASKA

PAGM  
GAMBELL  
GAMBELL, AK  
RNAV (GPS) RWY 16 A1  
LNAV/VNAV FINAL  
1:100,000

VADUZ

LNAV/VNAV VADUZ to PAGM:RW16:AER TREE (509)

LNAV/VNAV Missed Adj TREE (509)

Missed Level Surface TREE (611)

RW16

PAGM

RW34

KALIX

HOLDING PATTERN

GRASP (7000) LAD 10

ALASKA

PAGM  
GAMBELL  
GAMBELL, AK  
RNAV (GPS) RWY 16 A1  
LNAV/VNAV FINAL  
1:100,000

VADUZ

LNAV/VNAV VADUZ to PAGM:RW16:AER TREE (509)

LNAV/VNAV Missed Adj TREE (509)

Missed Level Surface TREE (611)

RW16

PAGM

RW34

KALIX

HOLDING PATTERN

GRASP (7000) LAD 10

ALASKA

PAGM  
GAMBELL  
GAMBELL, AK  
RNAV (GPS) RWY 16 A1  
LNAV/VNAV FINAL  
1:100,000

LNAV/VNAV VADUZ to PAGM:RW16:AER  
TREE (509)

LNAV/VNAV Missed Adj  
TREE (509)

Missed Level Surface  
TREE (611)

VADUZ

RW16

PAGM

RW34

KALIX

HOLDING PATTERN

GRASP (7000) 1000

ALASKA

PAGM  
GAMBELL  
GAMBELL, AK  
RNAV (GPS) RWY 16 A1  
LNAV/VNAV FINAL  
1:100,000

LNAV/VNAV VADUZ to PAGM:RW16:AER  
TREE (509)

LNAV/VNAV Missed Adj  
TREE (509)

Missed Level Surface  
TREE (611)

VADUZ

RW16

PAGM

RW34

KALIX

HOLDING PATTERN

GRASP (7500) 1000

ALASKA

PAGM  
GAMBELL  
GAMBELL, AK  
RNAV (GPS) RWY 16 A1  
LNAV/VNAV FINAL  
1:100,000

LNAV/VNAV VADUZ to PAGM:RW16:AER  
TREE (509)

LNAV/VNAV Missed Adj  
TREE (509)

Missed Level Surface  
TREE (611)

VADUZ

RW16

PAGM

RW34

KALIX

ALASKA

HIGHER TEMPERATURE

PAGM  
GAMBELL  
GAMBELL, AK  
RNAV (GPS) RWY 16 A1  
LNAV FINAL & CIRCLING  
1:100,000

Circling CAT A/B/C  
TOWER (89) 02-000274

LNAV VADUZ to PAGM:RW16:AER  
TREE (509)

Missed Level Surface  
TREE (611)

**Circling CAT D  
AAO (350)**

ALASKA



PAGM  
GAMBELL  
GAMBELL, AK  
RNAV (GPS) RWY 16 A1  
FEEDER, IAF, IF, LNAV FINAL, MA HOLDING  
1:500,000

Feeder QAYAQ to EEKAY  
Feeder EEKAY to ZADOK  
SHIP (150)

EEKAY HOLDING  
SHIP (150)

Initial ZADOK to JOTLY  
SHIP (150)

Intermediate JOTLY to VADUZ  
SHIP (150)

LNAV VADUZ to PAGM:RW16:AER  
TREE (509)

Missed Level Surface  
TREE (611)

