

Flight Procedures Cover Page	Task Action: P-NOTAM	Task Type: IAP	Estimated Chart Date: 06/17/2021	APWS Task ID: 37237544D77D4C698ED2C7F4FDFAB00D	APWS Project ID: 052B0917EBB64F8AB9F4EFBF8EDCF363
Procedure: RNAV (GPS) RWY 28 AMDT 0C		Enroute: NO	Specialist: Hawkins, Howard		Agreement Number:
Airport ID: KMBL			Airport City: MANISTEE		State: MI
Facility ID:	Facility Type:	Flight Inspection Remark Type:			
<div>Procedure Comments: P-NOTAM</div> <div>THIS Cancels FDC 0/0939</div> <div>Order 8260.3, Chapter 2, New Circling Criteria Applied</div> <div>Contact Dave Teffeteller at 202-267-5177</div> <div>QUALITY 45 CHECKED</div> <div>QUALITY 26 CHECKED</div>					

OLD

MANISTEE, MICHIGAN


AL-5257 (FAA)

20086

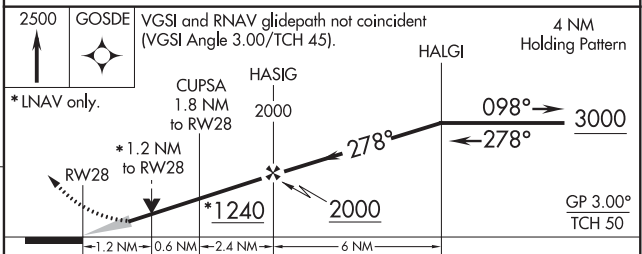
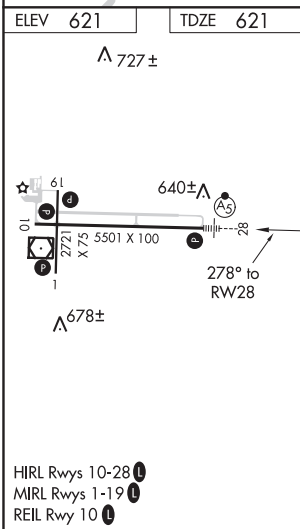
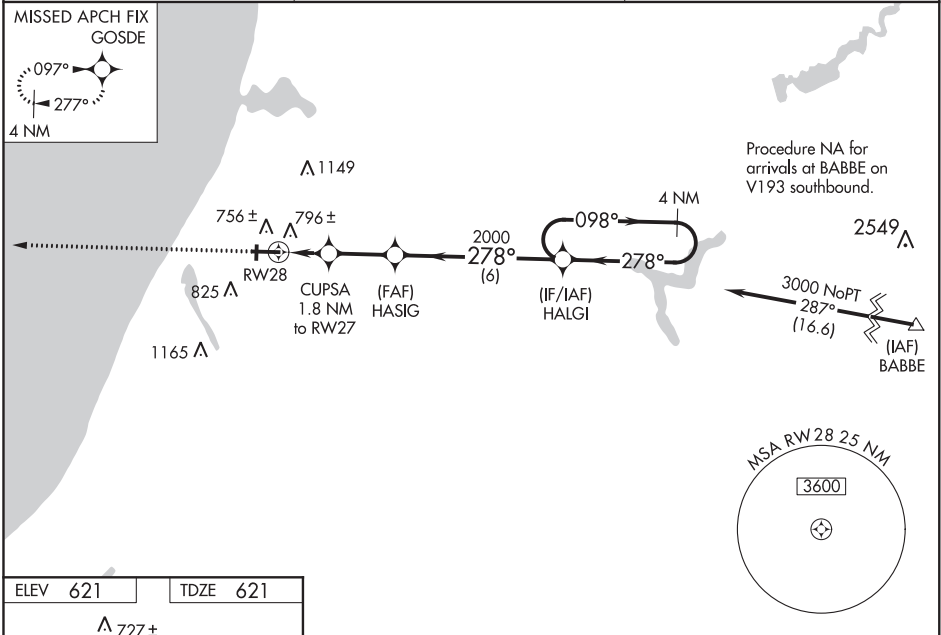
WAAS CH <b>42532</b> <b>W28A</b>	APP CRS <b>278°</b>	Rwy Idg TDZE Apt Elev	<b>5501</b> <b>621</b> <b>621</b>
--	------------------------	-----------------------------	---

## RNAV (GPS) RWY 28

MANISTEE COUNTY-BLACKER (MBL)

<p><b>▼</b> Night landing: Rwy 1/19 NA. Baro-VNAV NA when using Ludington altimeter setting. For uncompensated Baro-VNAV systems, LNAV/VNAV NA below -16°C (4°F) or above 54°C (130°F). DME/DME RNP-0.3 NA. VDP NA with Ludington altimeter setting. When local altimeter setting not received, use Ludington altimeter setting and increase all DA 50 feet and all MDA 60 feet. Increase LNAV/VNAV visibility all Cats ½ mile. Increase LNAV Cats C/D visibility ¼ mile, and Circling Cat C visibility ¼ mile.</p>	<p>MALSR</p> 	<p>MISSED APPROACH: Climb to 2500 direct GOSDE and hold.</p>
---	--	--

AWOS-3PT <b>111.4</b>	MINNEAPOLIS CENTER <b>120.85 322.35</b>	UNICOM <b>122.8 (CTAF) 0</b>
--------------------------	--	---------------------------------



CATEGORY	A	B	C	D
LPV DA	821-½	200 (200-½)		
LNAV/VNAV DA	984-¾	363 (400-¾)		
LNAV MDA	1060-½	439 (500-½)	1060-¾	439 (500-¾)
CIRCLING	1120-1 499 (500-1)	1160-1 539 (600-1)	1200-1½ 579 (600-1½)	1300-2¼ 679 (700-2¼)

MANISTEE, MICHIGAN  
Orig-B 30APR15

44°16'N-86°15'W

MANISTEE COUNTY-BLACKER (MBL)  
RNAV (GPS) RWY 28

EC-1, 21 MAY 2020 to 18 JUN 2020

EC-1, 21 MAY 2020 to 18 JUN 2020

