



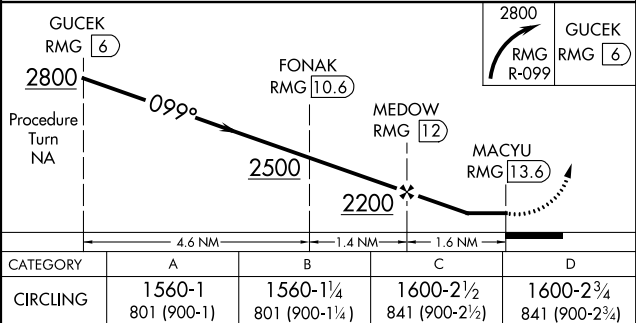
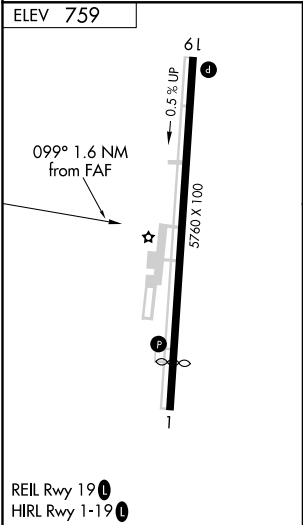
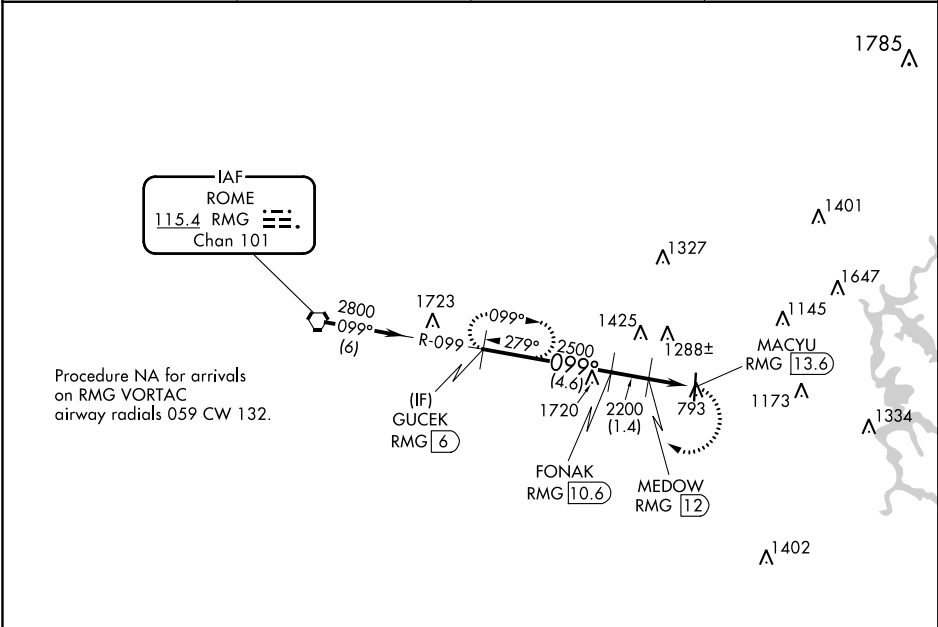
Flight Procedures Cover Page	Task Action: P-NOTAM	Task Type: IAP	Estimated Chart Date: 11/04/2021	APWS Task ID: 35EDE65320F44E0CA651AE96244E64A6	APWS Project ID: 70404F0950FE4FE4BEF9975041E66359
Procedure: VOR-A AMDT 2D		Enroute: NO	Specialist: Donkor, Kweku		Agreement Number:
Airport ID: KVPC			Airport City: CARTERSVILLE		State: GA
Facility ID:	Facility Type:	Flight Inspection Remark Type:			
<div> <div> Procedure Comments: P-NOTAM.   THIS CANCELS FDC 0/7450.   ORDER 8260.3, CHAPTER 2, NEW CIRCLING CRITERIA APPLIED.   CONTACT: LONNIE EVERHART 405-954-4576/DAVID TEFFETELLER 202-267-5177. </div> <div>   </div> </div>					

VORTAC RMG <b>115.4</b> Chan <b>101</b>	APP CRS <b>099°</b>	Rwy Idg TDZE Apt Elev <b>759</b>	<b>N/A</b> <b>N/A</b> <b>759</b>
---	------------------------	---	--

**VOR-A**  
CARTERSVILLE (VPC)

<b>⚠</b> When local altimeter setting not received, use Richard B Russell Rgnl - J H Towers Field altimeter setting and increase all MDA 80 feet and Cat C and D visibility ¼ mile. DME required.	MISSED APPROACH: Climbing right turn to 2800 on RMG R-099 to GUCEK/6 DME and hold.
---	--

ASOS <b>120.525</b>	ATLANTA APP CON <b>121.0 268.7</b>	GCO <b>121.725</b>	UNICOM <b>123.05</b> (CTAF) <b>0</b>
------------------------	---------------------------------------	-----------------------	---





NM  
FT

3

6

9

20000

40000

KVPC  
CARTERSVILLE  
CARTERSVILLE, GA  
1:100,000  
NEW CIRCLING AREA

Circling CAT C TOWER (1425)  
13-002036

Circling CAT B TREE (1288)

Circling CAT D STACK (1720)  
13-000400

Circling CAT A TREE (1039)

