

Flight Procedures Cover Page	Task Action: Cancellation	Task Type: IAP	Estimated Chart Date: 04/17/2025	APWS Task ID: 3528B904B67341828E6F65C399751A8B	APWS Project ID: 699208207DED411DBD122F422DA9BFFC
Procedure: NDB RWY 4 AMDT 2		Enroute: NO	Specialist: Nesbitt, Cole		Agreement Number:
Airport ID: KONZ			Airport City: DETROIT/GROSSE ILE		State: MI
Facility ID:	Facility Type:	Flight Inspection Remark Type:			
<div>Procedure Comments: PROCEDURE CANCELED</div> <div>CLEARs NOTAM FDC 2/9826</div> <div>CONTACT JOHN BORDY: 405-954-0980</div>					

QUALITY  
8  
CHECKED

NDB RYS  
419

APP CRS  
044°

Rwy Idg	<b>4846</b>
TDZE	<b>590</b>
Apt Elev	<b>591</b>

NDB RWY 4  
GROSSE ILE MUNI (ONZ)

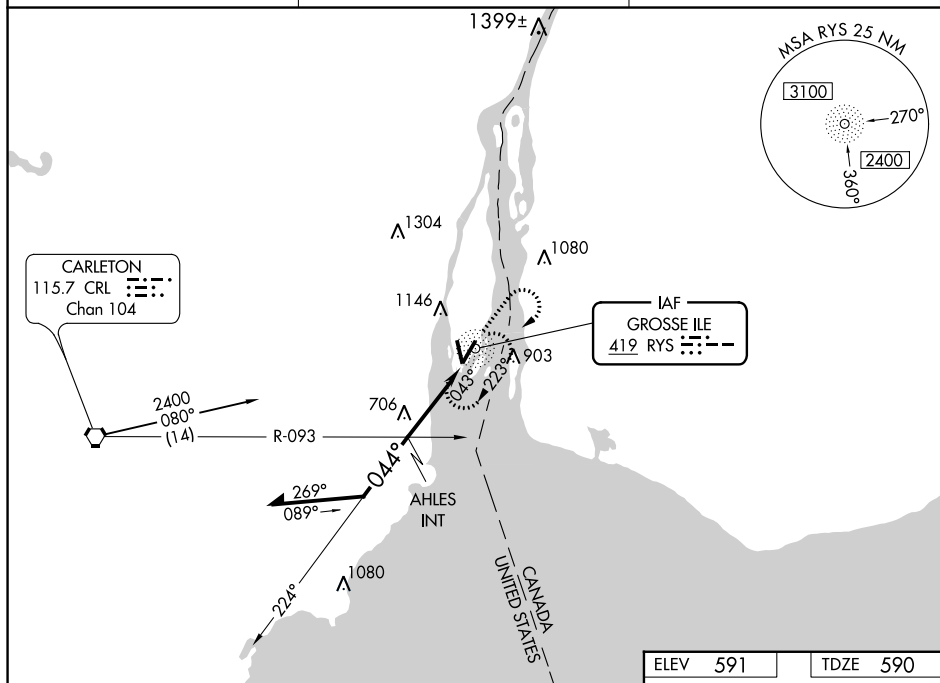
**V** Visibility reduction by helicopters NA. When local altimeter setting not received, use Detroit Metropolitan Wayne County altimeter setting and increase all MDA 40 feet. Increase AHLES fix minimums Circling Cat A, C, and D visibilities  $\frac{1}{4}$  mile.

**MISSED APPROACH:** Climb to 1900 then climbing right turn to 2400 direct RYS NDB and hold.

AWOS-3  
119.675

DETROIT APP CON  
134.3 284.0




UNICOM  
123.0 (CTAF) **L**



Remain  
within 10 NM

2400 =

\*1.500

1900	2400	RYS
		

\* 1540 when using Detroit Metropolitan Wayne County altimeter setting.

			4 NM	
CATEGORY	A	B	C	D
S-4	1500-1¼	910 (1000-1¼)	1500 - 2¾ 910 (1000-2¾)	1500 - 3 910 (1000-3)
CIRCLING	1500-1¼	909 (1000-1¼)	1500 - 2¾ 909 (1000-2¾)	1500 - 3 909 (1000-3)
AHLES FIX MINIMUMS				
S-4	1140 - 1	550 (600-1)	1140 - 1½ 550 (600-1½)	1140 - 1¾ 550 (600-1¾)
CIRCLING	1460 - 1 869 (900-1)	1460 - 1¼ 869 (900-1¼)	1460 - 2½ 869 (900-2½)	1460 - 2¾ 869 (900-2¾)

