

Flight Procedures Cover Page	Task Action: P-NOTAM	Task Type: IAP	Estimated Chart Date: 11/04/2021	APWS Task ID: 34BDA2CA5A4040A49C8DE923E02D16E3	APWS Project ID: F81F966281C047708D338AB373ED0BA7
Procedure: APPROACH RNAV (GPS) RWY 5 ORIG-B		Enroute: NO	Specialist: Cannon, Brett		Agreement Number:
Airport ID: KRYV			Airport City: WATERTOWN		State: WI
Facility ID:	Facility Type:	Flight Inspection Remark Type:			
<div>Procedure Comments:</div> <div>P-NOTAM</div> <div>This Cancels FDC 0/8788</div> <div>Order 8260.3, chapter 2, New Circling Criteria Applied</div> <div>Contact Dave Teffeteller at 202-267-5177</div> <div><div>QUALITY 26 CHECKED</div><div>QUALITY 45 CHECKED</div></div>					

OLD

WATERTOWN, WISCONSIN

AL-6179 (FAA)

19171

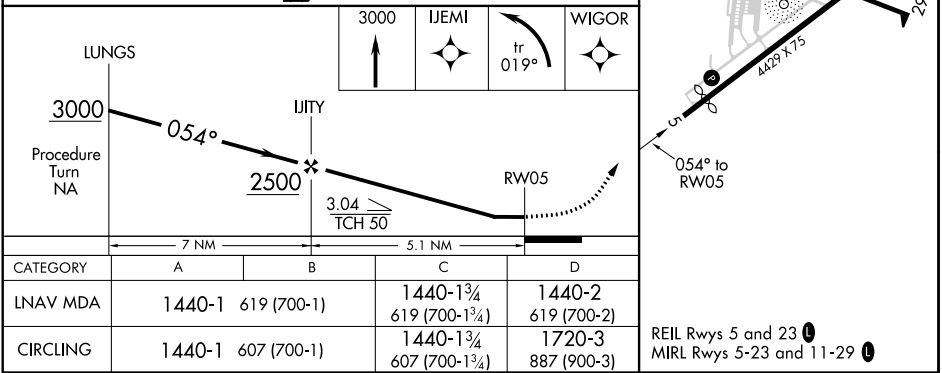
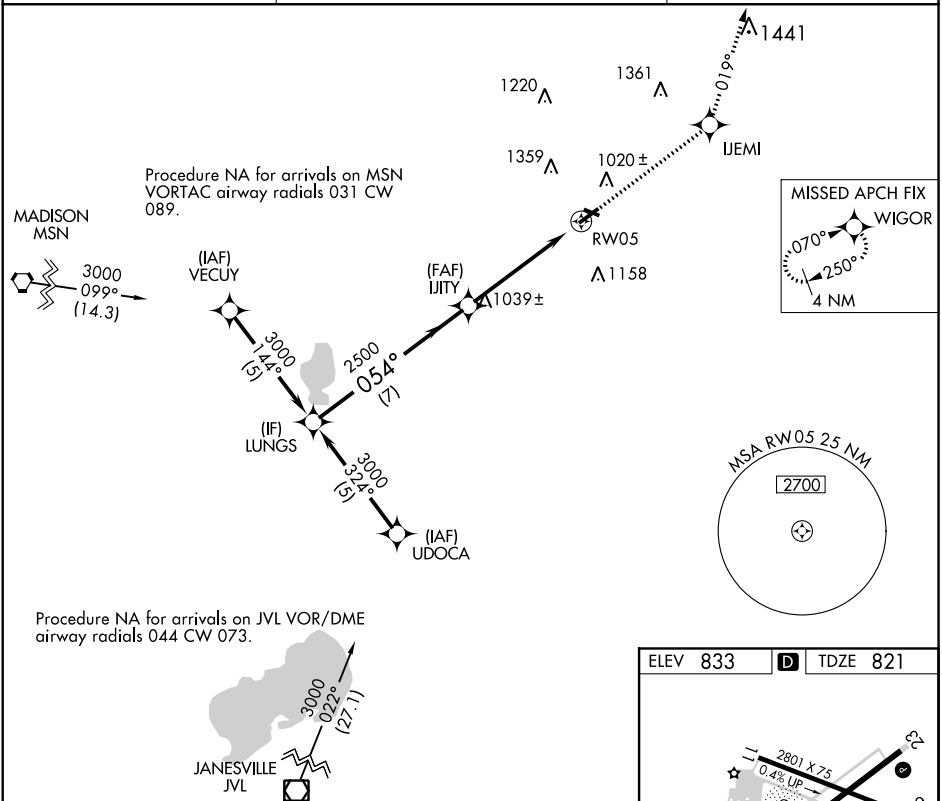
APP CRS	Rwy Idg	4239
054°	TDZE	821
	Apt Elev	833

RNAV (GPS) RWY 5

WATERTOWN MUNI (RYV)

RNP APCH.	MISSED APPROACH: Climb to 3000 direct IJEMI and left turn on 019° track to WIGOR and hold.
Rwy 5 helicopter visibility reduction below ¾ SM NA. When local altimeter setting not received, use Dodge County altimeter setting. Circling Rwy 23 NA at night.	

AWOS-3 119.975	MADISON APP CON ★ 119.15 343.7	UNICOM 122.8 (CTAF) 0
-------------------	-----------------------------------	--------------------------



WATERTOWN, WISCONSIN
Orig-A 20JUN19

43°10'N-88°43'W

WATERTOWN MUNI (RYV)
RNAV (GPS) RWY 5

EC-3, 20 MAY 2021 to 17 JUN 2021

EC-3, 20 MAY 2021 to 17 JUN 2021

