

Flight Procedures Cover Page	Task Action: Amendment	Task Type: IAP	Estimated Chart Date: 04/23/2020	APWS Task ID: 345D4F4450CA494BA6B0F9BCB1DE8057	APWS Request ID: 4C798FD6233F47A2A6C1BB8F54F45510
Procedure: VOR-A AMDT 0A		Enroute: NO	Specialist: Sickels, Dale		Agreement Number:
Airport ID: KCFE	Airport Name: BUFFALO MUNI		Airport City: BUFFALO		State: MN
Facility ID: GEP	Facility Type: VORTAC	Flight Inspection Remark Type: New FC Slot			
<div>Procedure Comments: PROCESSED IAW AIRCRAFT OPERATIONS GROUP (AJW-33) MEMO, OCTOBER 3, 2018, SUBJECT: FLIGHT INSPECTION REVIEW NOT REQUIRED.</div> <div>P-NOTAM.</div> <div>CIRCLING ICON.</div> <div>ACTIVE DATA USED.</div> <div>CONTACT DAVID DANNER, AJV-A421, 405-954-5077.</div> <div><div>QUALITY 20 CHECKED</div><div>2/21/2020</div><div>QUALITY 41 CHECKED DNAC</div></div>					

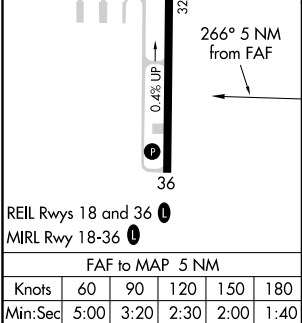
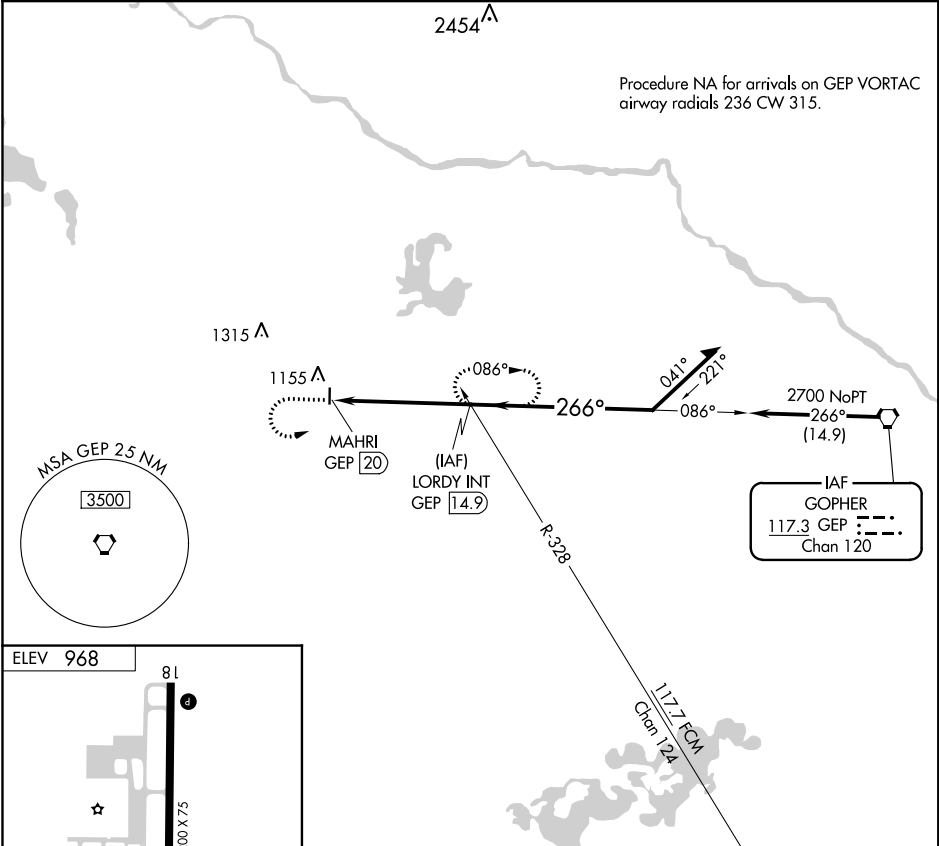
VORTAC GEP	APP CRS	Rwy Idg	N/A
117.3	266°	TDZE	N/A
Chan 120		Apt Elev	968

OLD

VOR-A
BUFFALO MUNI (CFE)

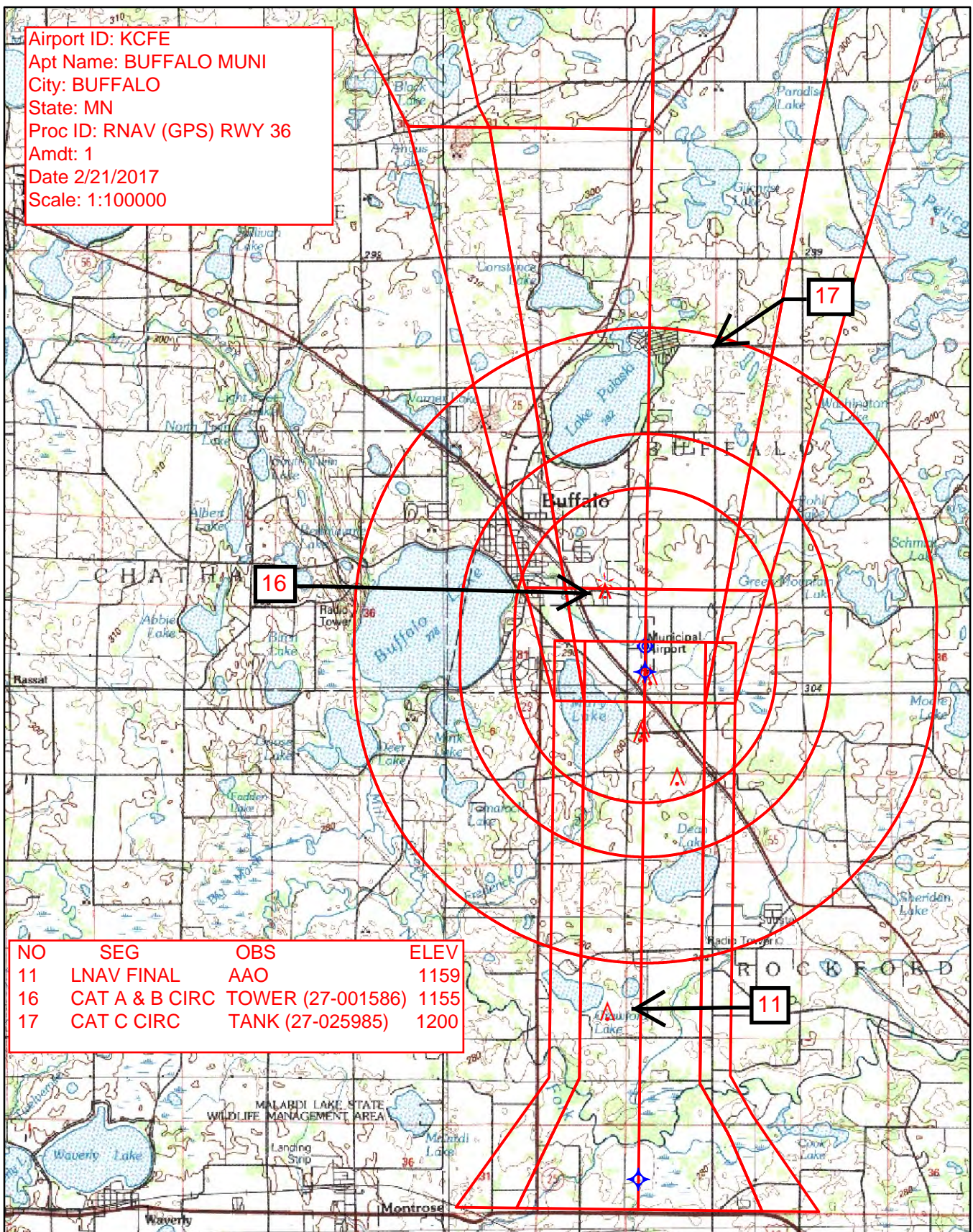
When local altimeter setting not received, use Maple Lake altimeter setting. When VGSI inoperative, procedure NA at night.	MISSED APPROACH: Climb to 2200 then climbing left turn to 3600 via GEP VORTAC R-266 to LORDY INT/GEP VORTAC 14.9 DME and hold.
--	--

AWOS-3 120.45	MINNEAPOLIS APP CON 126.5 335.65	GCO 121.725	UNICOM 122.8 (CTAF)
-------------------------	--	-----------------------	-------------------------------



2200	3600	LORDY INT	LORDY INT GEP 14.9	Remain within 10 NM
↑	GEP R-266			
MAHRI GEP 20				
2700				
266°				
2700				
086°				
5 NM				
CATEGORY	A	B	C	D
CIRCLING	1580-1	612 (700-1)	1580-1¾ 612 (700-1¾)	NA

Airport ID: KCFE
Apt Name: BUFFALO MUNI
City: BUFFALO
State: MN
Proc ID: RNAV (GPS) RWY 36
Amdt: 1
Date 2/21/2017
Scale: 1:100000



Map from KCFE RNAV (GPS) RWY 36 showing new circling areas and controlling obstacles.