

Flight Procedures Cover Page	Task Action: Abbreviated Amendment	Task Type: SID	Estimated Chart Date: 08/07/2025	APWS Task ID: 33C0EEBD622740DCA647EBF3DE53B722	APWS Project ID: 6ED70E1AFE2E41B698FCA0B5BD75F836
Procedure: HENRY FOUR DEPARTURE		Enroute: YES	Specialist: Smart, Phillip		Agreement Number:
Airport ID: KPHF			Airport City: NEWPORT NEWS		State: VA
Facility ID:	Facility Type:	Flight Inspection Remark Type:			
<div>Procedure Comments: ACTIVE AIRPORT DATA USED  REMOVAL OF NAVAIDS  Processed IAW Technical Support Group (AJF-17) Memo dated 07/07/2021 Guidance for Procedural Changes Requiring Flight Inspection/Validation.  CONTACT ROBERT HAMILTON 405-954-4608. FEDERAL AVIATION ADMINISTRATION.</div> <div>QUALITY 9 CHECKED BEGUE</div> <div>QUALITY 23 CHECKED</div>					

(HENRY3.PHF) 23278  
HENRY THREE DEPARTURE

NEWPORT NEWS/WILLIAMSBURG INTL (PHF)  
AL-957 (FAA) NEWPORT NEWS, VIRGINIA

ATIS  
128.65  
CLNC DEL  
121.65 225.4  
GND CON  
121.9 348.6  
NEWPORT NEWS TOWER ★  
118.7 257.9 348.6  
NORFOLK DEP CON  
124.9 335.625

FLAT ROCK  
113.3 FAK  
Chan 80

HARCUM  
108.8 HCM  
Chan 25

SALISBURY  
111.2 SBY  
Chan 49

SNOW HILL  
112.4 SWL  
Chan 71

HOPEWELL  
114.35 HPW  
Chan 90 (Y)

CAPE CHARLES  
112.2 CCV  
Chan 59

NORFOLK  
116.9 ORF  
Chan 116

TAKEOFF MINIMUMS  
Rwys 2, 7, 20, 25: Standard.  
NOTE: RADAR required.  
NOTE: Chart not to scale.



DEPARTURE ROUTE DESCRIPTION

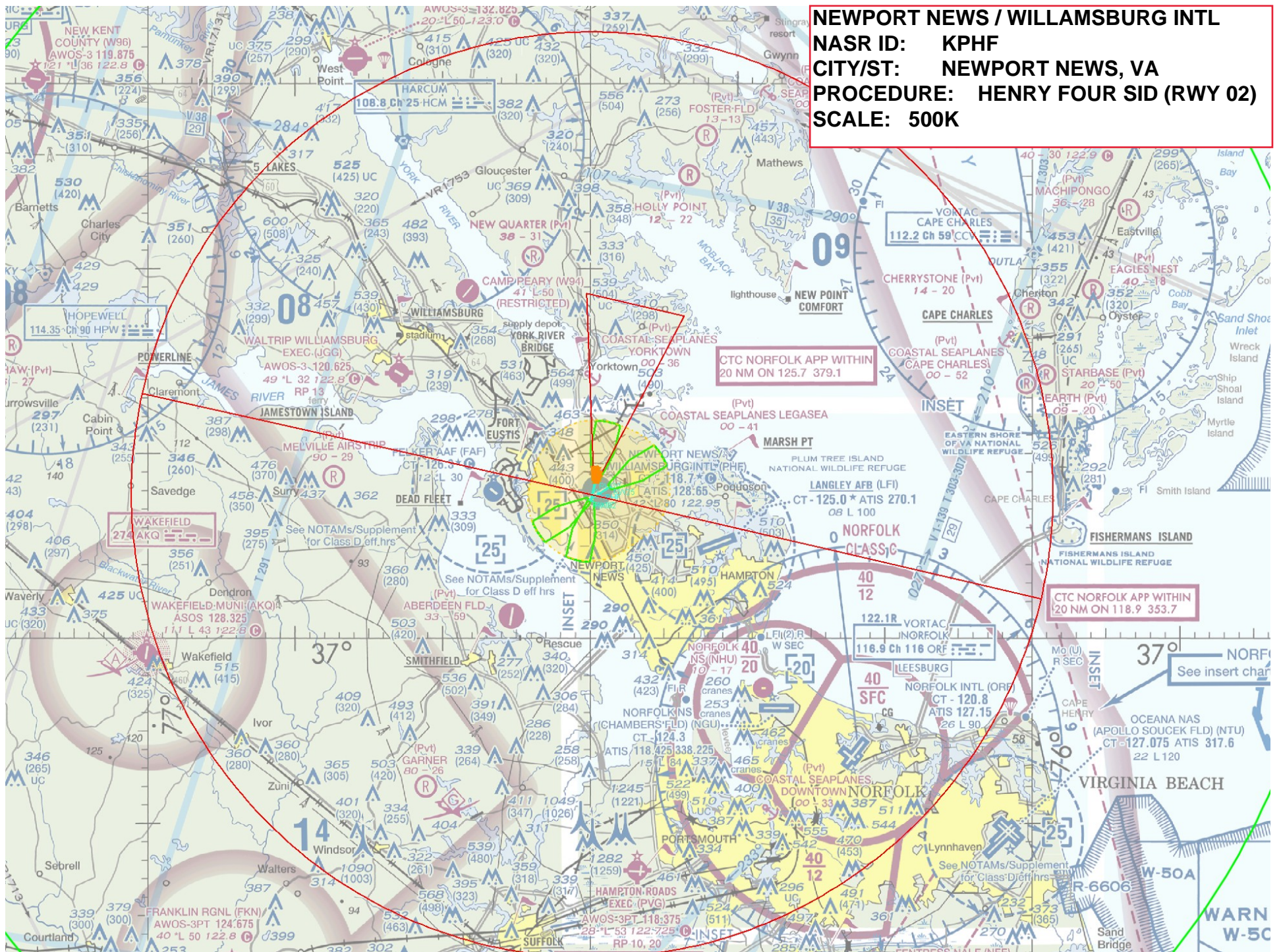
TAKEOFF RUNWAY 2: Climb heading 022° to 2000, thence . . .  
TAKEOFF RUNWAY 7: Climb heading 067° to 2000, thence . . .  
TAKEOFF RUNWAY 20: Climbing right turn to 2000 on heading 250°, thence . . .  
TAKEOFF RUNWAY 25: Climb heading 247° to 2000, thence . . .  
... on vectors to assigned route/fix. Expect clearance to requested altitude 10 minutes after departure.

NE-3, 28 NOV 2024 to 26 DEC 2024

NE-3, 28 NOV 2024 to 26 DEC 2024



**NEWPORT NEWS / WILLAMSBURG INTL**  
**NASR ID: KPHF**  
**CITY/ST: NEWPORT NEWS, VA**  
**PROCEDURE: HENRY FOUR SID (RWY 02)**  
**SCALE: 500K**

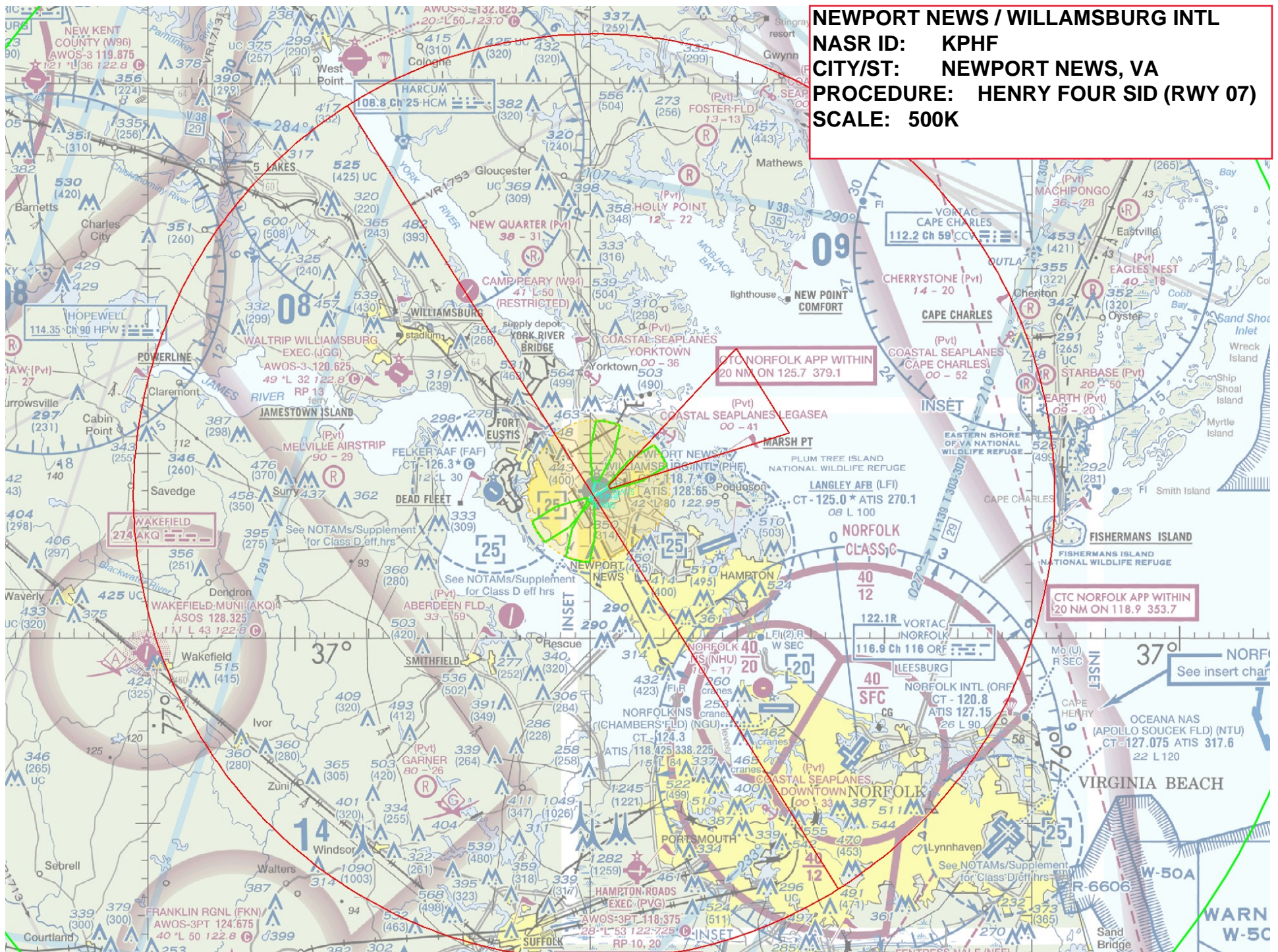






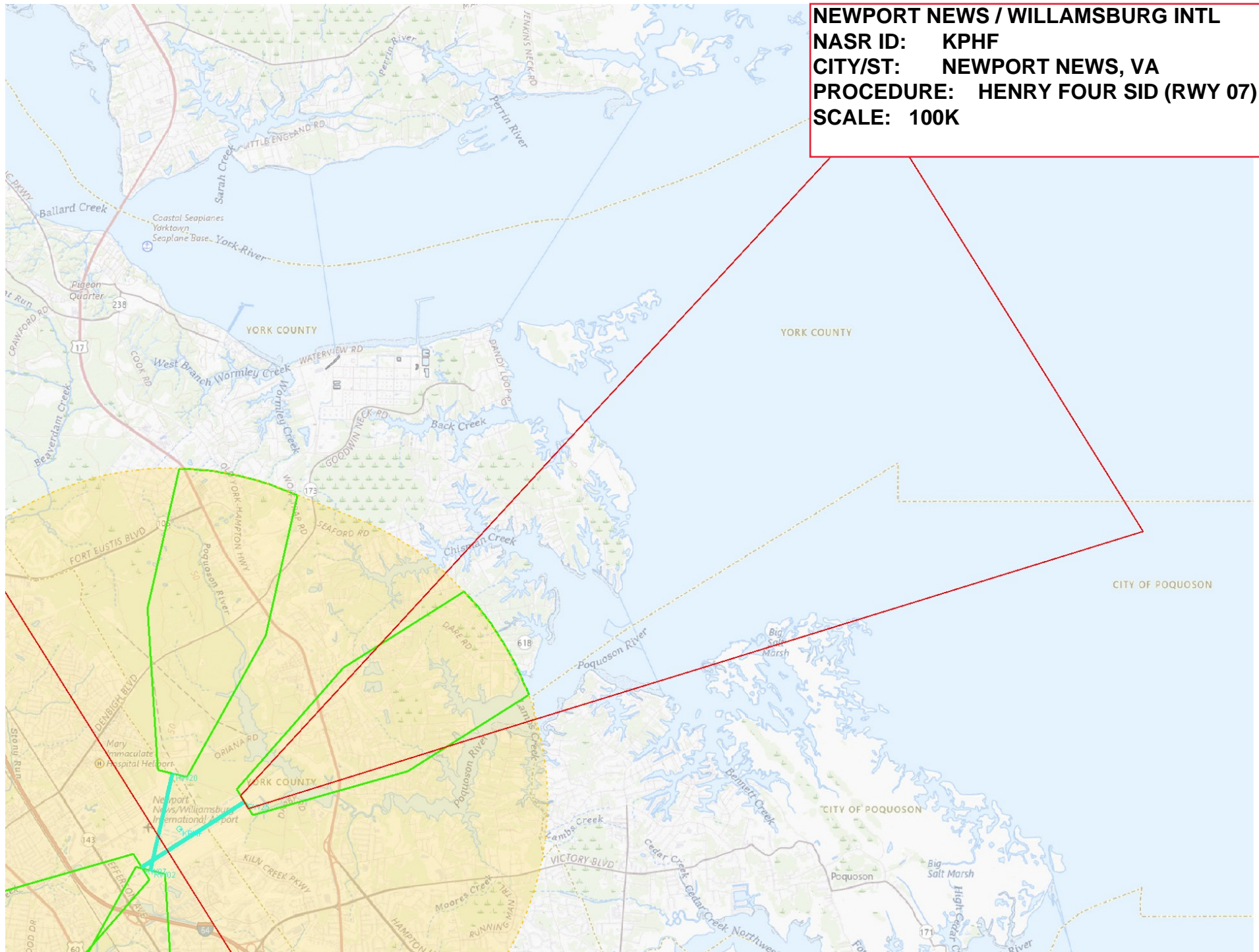


**NEWPORT NEWS / WILLAMSBURG INTL**  
**NASR ID: KPHF**  
**CITY/ST: NEWPORT NEWS, VA**  
**PROCEDURE: HENRY FOUR SID (RWY 07)**  
**SCALE: 500K**



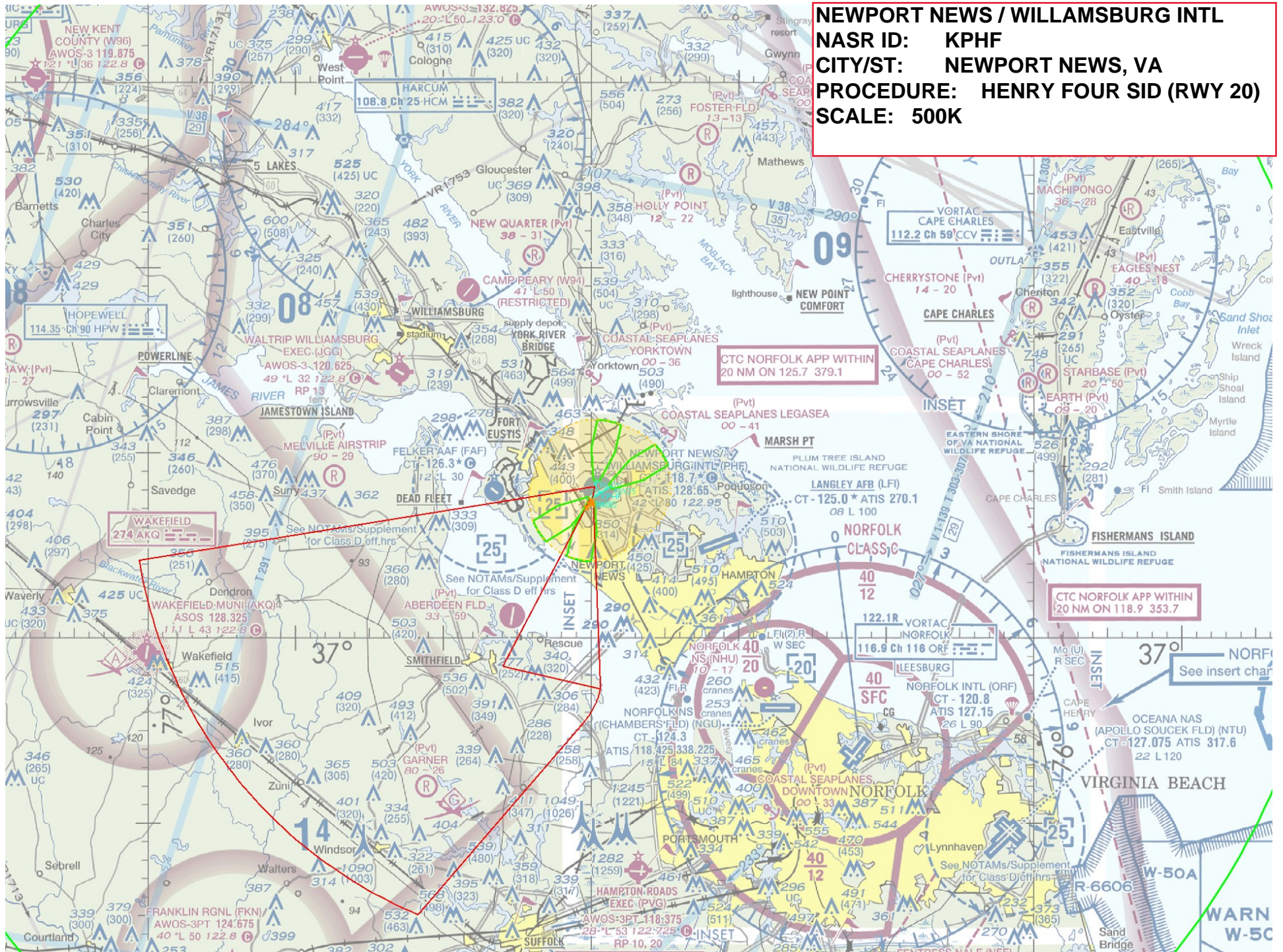


**NEWPORT NEWS / WILLAMSBURG INTL**  
**NASR ID: KPHF**  
**CITY/ST: NEWPORT NEWS, VA**  
**PROCEDURE: HENRY FOUR SID (RWY 07)**  
**SCALE: 100K**



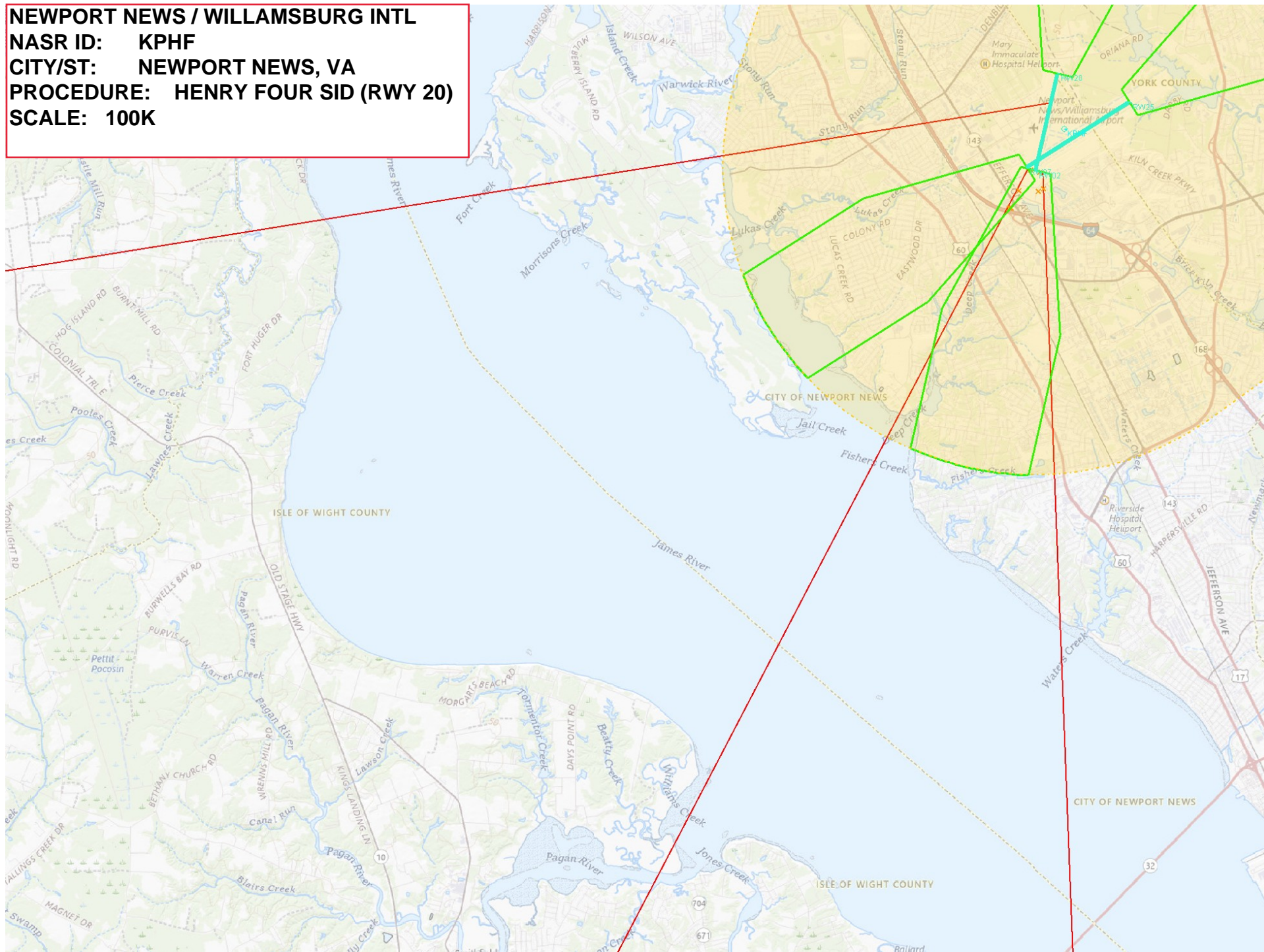


**NEWPORT NEWS / WILLAMSBURG INTL**  
**NASR ID: KPHF**  
**CITY/ST: NEWPORT NEWS, VA**  
**PROCEDURE: HENRY FOUR SID (RWY 20)**  
**SCALE: 500K**





**SCALE: 100K**





**NEWPORT NEWS / WILLAMSBURG INTL**  
**NASR ID: KPHF**  
**CITY/ST: NEWPORT NEWS, VA**  
**PROCEDURE: HENRY FOUR SID (RWY 25)**  
**SCALE: 500K**





**SCALE: 100K**

