

Flight Procedures Cover Page	Task Action: Amendment	Task Type: IAP	Estimated Chart Date: 08/13/2020	APWS Task ID: 335D397A5E9149C890A2E48CD4701895	APWS Request ID: F218D7767D8C49339EA7CB54061F6477
Procedure: ILS OR LOC RWY 21 AMDT 10C		Enroute: NO	Specialist: Roslewski, Russell		Agreement Number:
Airport ID: KFSD	Airport Name: JOE FOSS FIELD		Airport City: SIOUX FALLS		State: SD
Facility ID:	Facility Type:	Flight Inspection Remark Type:			
<p>Procedure Comments: P-NOTAM</p> <p>New circling areas based on existing procedure at the airport – RNAV (GPS) RWY 33, Amdt 2</p> <p>Processed IAW Aircraft Operations Group (AJW-33) Memo, October 3, 2018, Subject: Flight Inspection Review Not Required.</p> <p>Dave Danner, 405-954-5077</p>					

QUALITY
15
CHECKED

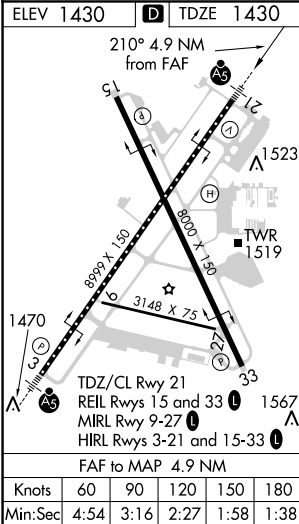
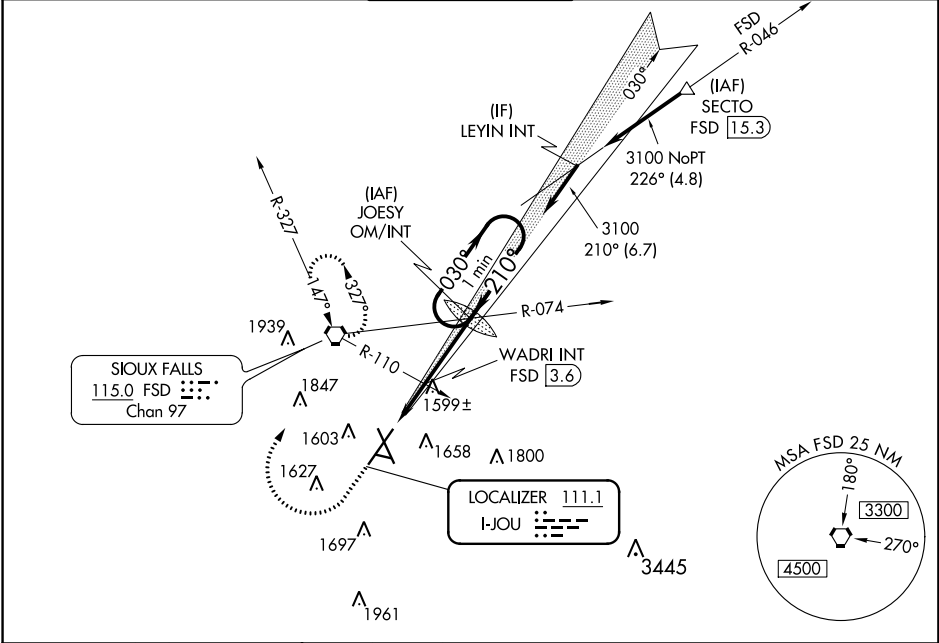
QUALITY
10
CHECKED

LOC I-JOU 111.1	APP CRS 210°	Rwy Idg 8999 TDZE 1430 Apt Elev 1430
---------------------------	------------------------	---

ILS or LOC RWY 21 JOE FOSS FIELD (FSD)

<div> <div> <div></div> <div>ASR</div> </div> <div> For inoperative MALSR increase S-ILS all Cats visibility to ¾ mile, increase S-LOC 21 Cat C/D visibility to 1½ mile. When using WADRI FIX minimums, increase S-LOC 21 Cat C/D visibility to 1 mile. </div> </div>	<div> <div> <div></div> <div>MALSR</div> </div> <div> MISSED APPROACH: Climb to 3400 then right turn direct FSD VORTAC and hold. </div> </div>
---	--

ATIS 126.6	SIOUX FALLS APP CON* 125.8 284.725	SIOUX FALLS TOWER* 118.3 (CTAF) 0 257.8	GND CON 121.9 348.6	UNICOM 122.95
----------------------	--	---	-------------------------------	-------------------------



3400

↑

↗

FSD

One Minute Holding Pattern

*LOC only.

WADRI INT

FSD [3.6]

JOESY OM/INT

3047

030° →

← 210°

3100

GS 3.00°

TCH 49

2 NM

2.9 NM

*2100

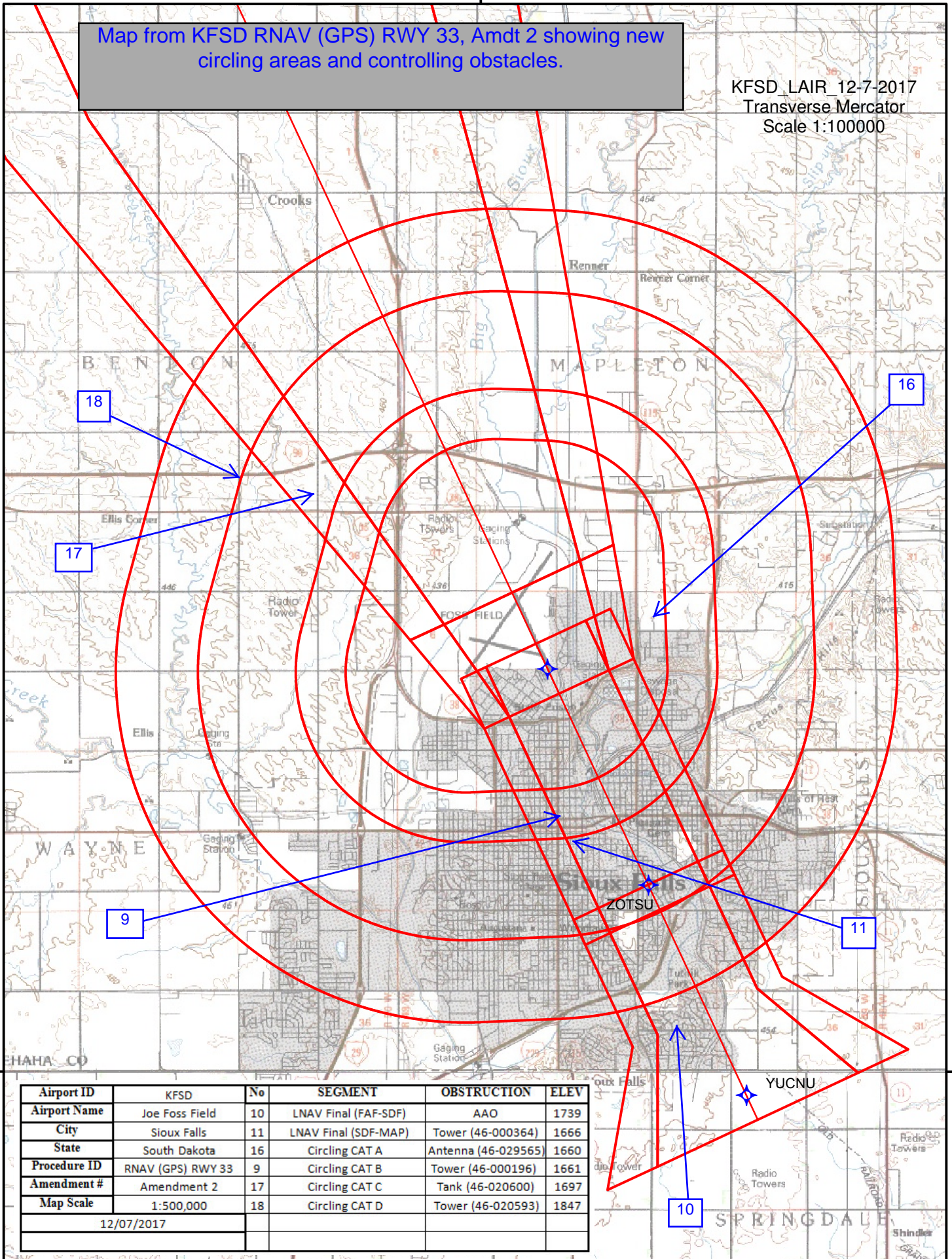
3100

CATEGORY	A	B	C	D
S-ILS 21	1630/18 200 (200-½)			
S-LOC 21	2100/24 670 (700-½)	2100-1½ 670 (700-1½)		
CIRCLING	2100-1 670 (700-1)	2100-1⅞ 670 (700-1⅞)	2100-2 670 (700-2)	
WADRI FIX MINIMUMS				
S-LOC 21	1800/24 370 (400-½)	1800/35 370 (400-¾)		
CIRCLING	1980-1 550 (600-1)	1980-1½ 550 (600-½)	2040-2 610 (700-2)	

96°45'0"W

Map from KFSD RNAV (GPS) RWY 33, Amdt 2 showing new circling areas and controlling obstacles.

KFSD LAIR 12-7-2017
Transverse Mercator
Scale 1:100000



Airport ID	KFSD	No	SEGMENT	OBSTRUCTION	ELEV
Airport Name	Joe Foss Field	10	LNAV Final (FAF-SDF)	AAO	1739
City	Sioux Falls	11	LNAV Final (SDF-MAP)	Tower (46-000364)	1666
State	South Dakota	16	Circling CAT A	Antenna (46-029565)	1660
Procedure ID	RNAV (GPS) RWY 33	9	Circling CAT B	Tower (46-000196)	1661
Amendment #	Amendment 2	17	Circling CAT C	Tank (46-020600)	1697
Map Scale	1:500,000	18	Circling CAT D	Tower (46-020593)	1847
12/07/2017					