

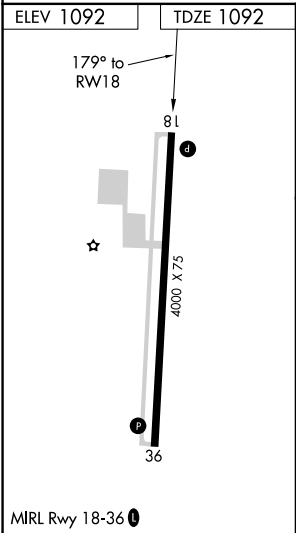
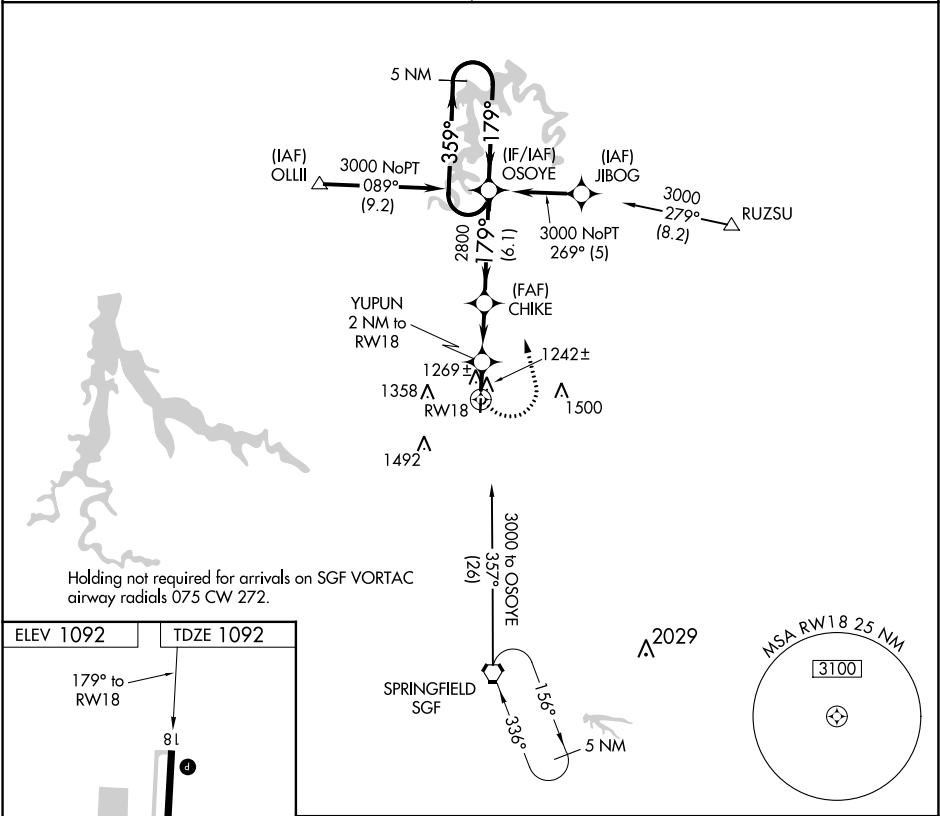
Flight Procedures Cover Page	Task Action: P-NOTAM	Task Type: IAP	Estimated Chart Date: 09/05/2024	APWS Task ID: 32CD7C4861FC47AC89B11903FA0F6D14	APWS Project ID: B66B47A4AED24204859556CA8F187B3D
Procedure: RNAV (GPS) RWY 18 AMDT 0B		Enroute: NO	Specialist: Mendenhall, Christopher		Agreement Number:
Airport ID: M17			Airport City: BOLIVAR		State: MO
Facility ID:	Facility Type:	Flight Inspection Remark Type:			
<div>Procedure Comments:</div> <div>VGSI system not coincident with IAP - Add NOT COINCIDENT note.</div> <div>ACTIVE DATA USED FOR KM17</div> <div>CLEAR NOTAM !FDC 3/9489</div> <div>PROCESSED IAW TECHNICAL SUPPORT GROUP (AJF-17) MEMO DATED 07/07/2021, SUBJECT: GUIDANCE FOR PROCEDURAL CHANGES REQUIRING FLIGHT INSPECTION/VALIDATION</div> <div>CONTACT: DAVID DANNER 405-954-5077</div> <div><div>QUALITY 41 CHECKED</div><div>QUALITY 18 CHECKED</div></div>					

APP CRS	Rwy Idg	4000
179°	TDZE	1092
	Apt Elev	1092

OLD

RNAV (GPS) RWY 18
BOLIVAR MUNI (M17)

<p>⚠ DME/DME RNP-0.3 NA. Visibility reduction by helicopters NA. Use Springfield-Branson Ntl altimeter setting. Straight-in and Circling Rwy 18 NA at night.</p>	<p>MISSED APPROACH: Climbing left turn to 3000 direct OSOYE and hold.</p>
<p>SPRINGFIELD APP CON 124.95 318.2</p>	<p>UNICOM 123.0 (CTAF) 1</p>



3000	OSOYE	CHIKE	OSOYE	5 NM Holding Pattern
	YUPUN 2 NM to RW18	CHIKE	OSOYE	
	1760	2800	3000	
	2 NM	3.2 NM	6.1 NM	
CATEGORY	A	B	C	D
LNAV MDA	1600-1	508 (600-1)	1600-1½ 508 (600-1½)	NA
CIRCLING	1660-1	568 (600-1)	1740-1¾ 648 (700-1¾)	NA

NC-3, 25 JAN 2024 to 22 FEB 2024

NC-3, 25 JAN 2024 to 22 FEB 2024