

|   |                              |   |                                       |   |  |
|---|------------------------------|---|---------------------------------------|---|--|
| Flight Procedures Cover Page  | Task Action:<br>FLIGHT CHECK | Task Type:<br>IAP                             | Estimated Chart Date:<br>05/16/2024   | APWS Task ID:<br>321CE48D5C4348048AD5B4DB18658496 | APWS Project ID:<br>E58E617374F7460F8DA5D154ECE758BE |
| Procedure:<br>VOR-A AMDT 2  |                              | Enroute:<br>NO                                | Specialist:<br>Wilkinson, Christopher |   | Agreement Number:                                    |
| Airport ID:<br>KEEO   |                              |   | Airport City:<br>MEEKER               |   | State:<br>CO   |
| Facility ID:<br>EKR   | Facility Type:<br>VOR_DME    | Flight Inspection Remark Type:<br>New FC Slot |                                       |   |  |
| <div>Procedure Comments:</div> <div>UTILIZED PENDING DATA FOR KEEO AIRPORT AND RWY 03/21.</div> <div>UTILIZED PENDING DATA FOR EKR VOR/DME.</div> <div>EKR VOR/DME MAG VAR CHANGED FROM 15E TO 9E.</div> <div>UPDATED MAG VAR FROM E14 TO E9 FOR KEEO.</div> <div>CONTACT CASIMIR TABAKA, AJV-A430, 405-202-7857.</div> <div><div>QUALITY<br/>10<br/>CHECKED</div><div>QUALITY<br/>33<br/>CHECKED</div></div> |                              |   |                                       |   |  |

MEEKER, COLORADO

AL-6601 (FAA)

FIG

|   |                        |  |
|---|------------------------|--|
| VOR/DME EKR<br><b>115.2</b><br>Chan <b>99</b> | APP CRS<br><b>113°</b> | Rwy Idg<br>TDZE<br>Apt Elev<br><b>N/A</b><br><b>N/A</b><br><b>6415</b> |
|---|------------------------|--|

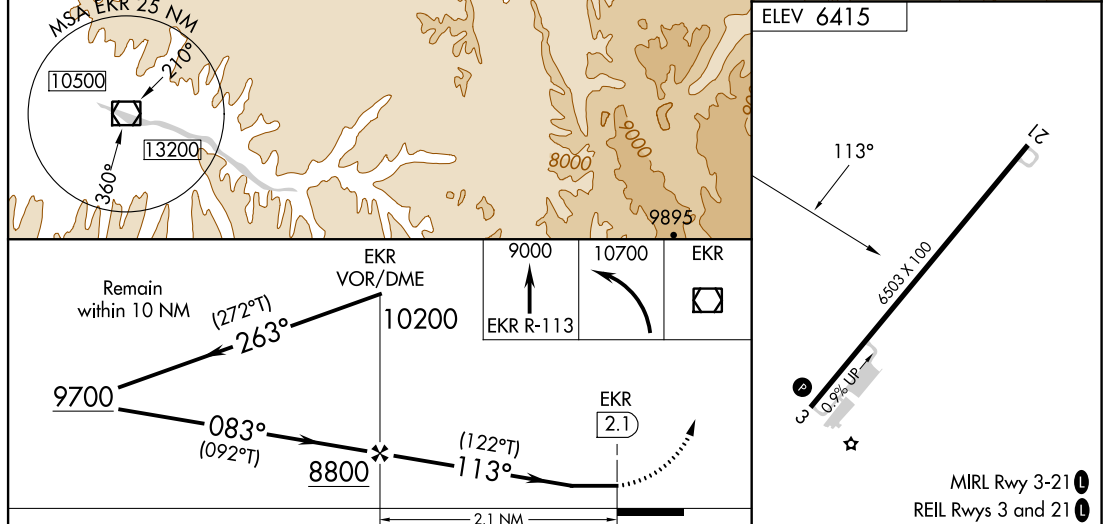
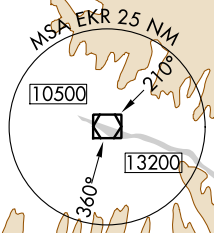
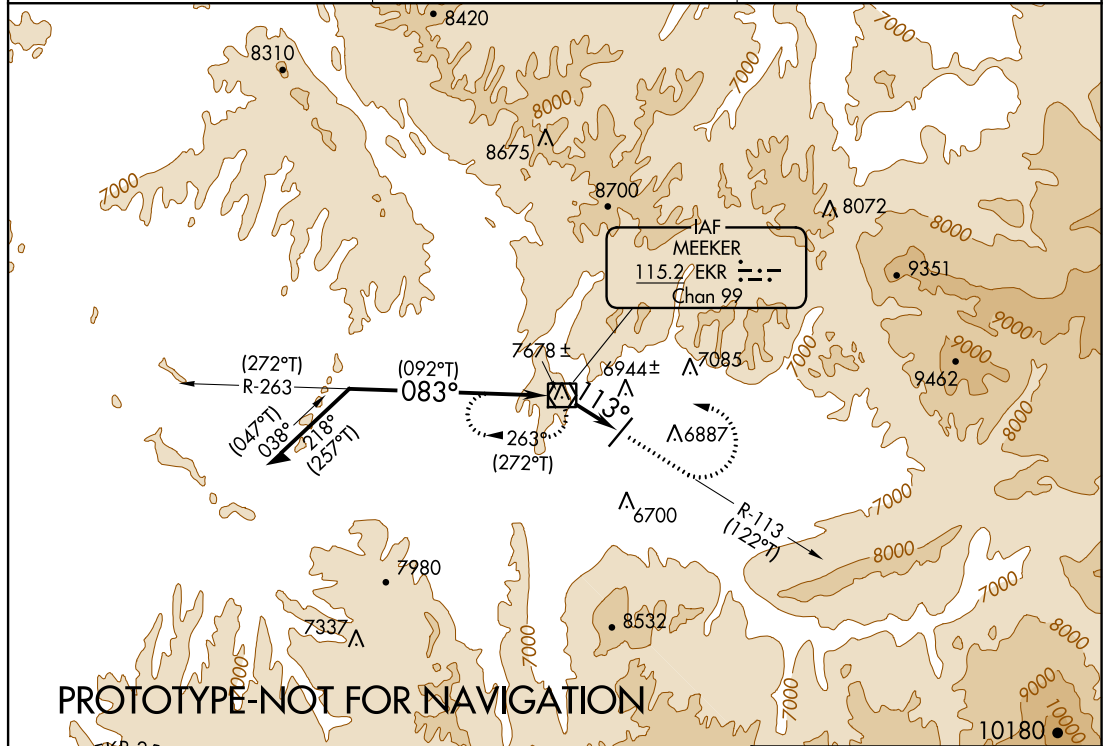
**FIG**

**VOR-A**

MEEKER COULTER FLD (EEO)

|   |   |
|---|---|
| <p>⚠ NA Circling NA west of Rwy 3-21. Rwy 21 helicopter visibility reduction below 1 SM NA.</p> <p>❄ -25°C Circling Rwy 21 NA at night.</p> | <p>MISSED APPROACH: Climb to 9000 on EKR VOR/DME R-113 then climbing left turn to 10700 direct EKR VOR/DME and hold, continue climb in hold to 10700.</p> |
|---|---|

|                        |                                     |                                 |
|------------------------|-------------------------------------|---------------------------------|
| ASOS<br><b>135.525</b> | DENVER CENTER<br><b>134.5 327.8</b> | UNICOM<br><b>122.8 (CTAF) 0</b> |
|------------------------|-------------------------------------|---------------------------------|



| CATEGORY | A                         | B                         | C                       | D  | FAF to MAP 2.1 NM   |
|----------|---------------------------|---------------------------|-------------------------|----|---|
| CIRCLING | 8020-1¼<br>1605 (1700-1¼) | 8020-1½<br>1605 (1700-1½) | 8620-3<br>2205 (2300-3) | NA | Knots 60 90 120 150 180<br>Min:Sec 2:06 1:24 1:03 0:50 0:42 |

MEEKER, COLORADO

Amdt 2 FIG

40°03'N-107°53'W

MEEKER COULTER FLD (EEO)

**VOR-A**

**AUTOMATED AL-6601 VOR-A**  
**AUTOMATED AL-6601 VOR-A**

SW-1  
1-25-24  
COMPILER: JUN  
REVIEWER:  
DBL CHKR:  
EFF: FIG

MEEKER, COLORADO

AL-6601 (FAA)

21196

|   |                        |                             |   |
|---|------------------------|-----------------------------|---|
| VOR/DME EKR<br><b>115.2</b><br>Chan <b>99</b> | APP CRS<br><b>107°</b> | Rwy Idg<br>TDZE<br>Apt Elev | <b>N/A</b><br><b>N/A</b><br><b>6415</b> |
|---|------------------------|-----------------------------|---|

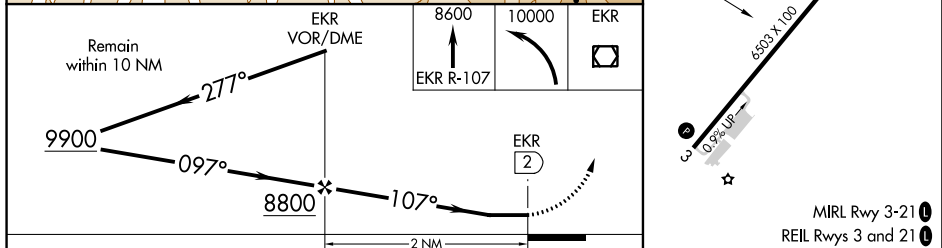
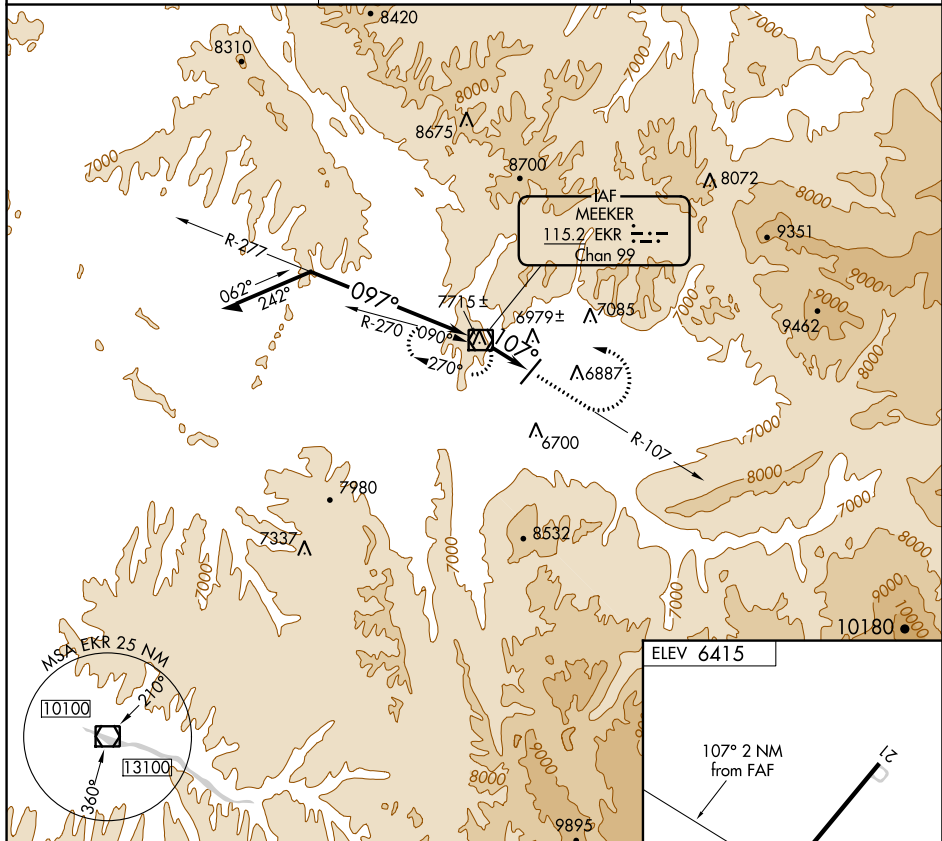
OLD

VOR-A

MEEKER COULTER FLD (EEO)

|       |  |   |
|-------|--|---|
|       | Circling not authorized west of Rwy 3-21.      |   |
| NA    | Night landing: Rwy 21 NA.                      | MISSED APPROACH: Climb via EKR VOR/DME R-107 to 8600,         |
| -25°C | Helicopter visibility reduction below 1 SM NA. | then climbing left turn to 10000 direct EKR VOR/DME and hold. |

|                        |                                     |                                 |
|------------------------|-------------------------------------|---------------------------------|
| ASOS<br><b>135.525</b> | DENVER CENTER<br><b>134.5 327.8</b> | UNICOM<br><b>122.8 (CTAF) 0</b> |
|------------------------|-------------------------------------|---------------------------------|



| CATEGORY | A              | B              | C             | D  | FAF to MAP 2 NM |      |      |      |      |      |
|----------|----------------|----------------|---------------|----|-----------------|------|------|------|------|------|
| CIRCLING | 8000-1¼        | 8000-1½        | 8440-3        | NA | Knots           | 60   | 90   | 120  | 150  | 180  |
|          | 1585 (1600-1¼) | 1585 (1600-1½) | 2025 (2100-3) |    | Min:Sec         | 2:00 | 1:20 | 1:00 | 0:48 | 0:40 |

MEEKER, COLORADO

Amdt 1B 15JUL21

MEEKER COULTER FLD (EEO)

VOR-A

40°03'N-107°53'W

SW-1, 02 NOV 2023 to 30 NOV 2023

SW-1, 02 NOV 2023 to 30 NOV 2023



