

Flight Procedures Cover Page	Task Action: FLIGHT CHECK	Task Type: IAP	Estimated Chart Date: 11/30/2023	APWS Task ID: 315713693E7C44D19202235C04981263	APWS Project ID: 02A82C40EE52434C9FC01D708B0A3249
Procedure: RNAV (GPS) Z RWY 12 ORIG		Enroute: NO	Specialist: Prassada, Parnell		Agreement Number:
Airport ID: KTUS			Airport City: TUCSON		State: AZ
Facility ID:	Facility Type:	Flight Inspection Remark Type: New FC Slot			
<div>Procedure Comments:</div> <div>PENDING DATA USED</div> <div>AMENDMENT OF ALL AFFECTED PROCEDURE DUE TO RUNWAY REHAB AND RENUMBERING FROM RWYS 11/29 TO 12/30.</div> <div>CONTACT ERIC SUSKI (AJV-A431) 405-954-7331.</div> <div><div>10/12/2023: THIS IS A CORRECTED COPY OF THE FORM APPROVED ON 09/14/2023.</div><div>1. REMOVED DINGO 12000 FROM PROFILE.</div><div><div>Digitally signed by</div><div><b>ERIC N SUSKI</b></div><div>Oct 12, 2023</div></div><div><div>QUALITY 20 CHECKED</div><div>J ZEDER 10/12/2023</div><div>16</div><div>QUALITY 41 CHECKED</div></div></div>					

<b>FIPC BASIC FORM</b>							
<b>PROCEDURE:</b> RNAV (GPS) Z RWY 12 ORIG			<b>AIRPORT NAME:</b> TUCSON INTL		<b>AIRPORT ID:</b> KTUS	<b>SPECIAL CONTROL NO:</b> SG-09-217-23	
<b>FAC ID:</b> KTUS12Z		<b>CITY:</b> TUCSON			<b>ST:</b> AZ	<b>ORIG CHART DATE:</b> 11/30/2023	
<b>DFL TYPE:</b> PROC/S	<b>THIRD PARTY:</b> <input type="checkbox"/> YES	<b>EST. TIME ON SITE:</b> 0.4	<b>REIMB. NUMBER:</b>		<b>PTS TASK ID:</b> 315713693E7C44D19202235C04981263		
<b>PREFLIGHT NOTES</b>							
<b>REVIEWER:</b>					<b>DATE:</b>		
<b>COMMENTS:</b>					<b>CHECK ONE:</b>		
					<input type="checkbox"/> FLT CK REQ <input type="checkbox"/> NFCR <input type="checkbox"/> REJECT		
							<b>YES</b>
					<b>CPV COMPLETE?</b>		
<b>PROCEDURE RESULTS</b>							
<b>INSPECTION DATE:</b> 10/18/2023		<b>CREW #:</b> VN075	<b>N #:</b> N86	<b>INSTRUMENT PROCEDURE STATUS:</b> <input checked="" type="checkbox"/> SAT <input type="checkbox"/> SAT W/CHANGES <input type="checkbox"/> UNSAT		<b>ARINC CODING:</b> <input checked="" type="checkbox"/> SAT <input type="checkbox"/> SAT/GOLD <input type="checkbox"/> UNSAT	
<b>FLIGHT INSPECTOR SIGNATURE:</b> joel f hawkley @ 10/18/2023 18:37			<b>PRINTED NAME:</b> HAWKLEY, JOEL FEWENS				<b>NOTAM INITIATED?</b> <input type="checkbox"/> YES <input checked="" type="checkbox"/> NO
<b>FLIGHT INSPECTOR REMARKS:</b> Tucson Intl, Tucson, AZ, RNAV (GPS) Z RWY 12, Orig. Complete. Satisfactory.							
<b>IN-FLIGHT OBSTACLE REPORT</b>							
<b>OBSTRUCTION ID #:</b>	<b>COORDINATES OR LOCATION:</b>		<b>GNSS ALTITUDE (MSL):</b>		<b>BAROMETRIC ALTITUDE (MSL):</b>		<b>HEIGHT ABOVE GROUND LEVEL:</b>

TUCSON, ARIZONA

AL-430 (FAA)

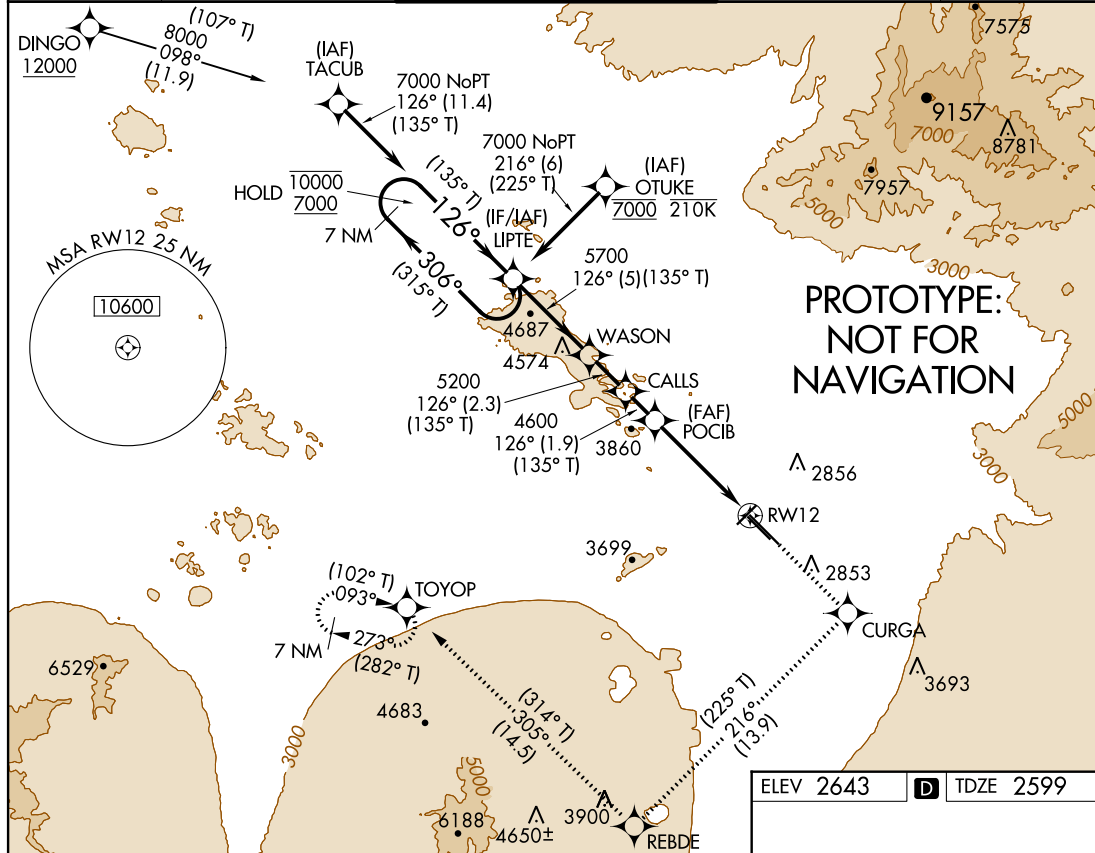
FIG

WAAS CH <b>93545</b> <b>W12A</b>	APP CRS <b>126°</b>	Rwy Idg <b>10996</b> TDZE <b>2599</b> Apt Elev <b>2643</b>
--	------------------------	--

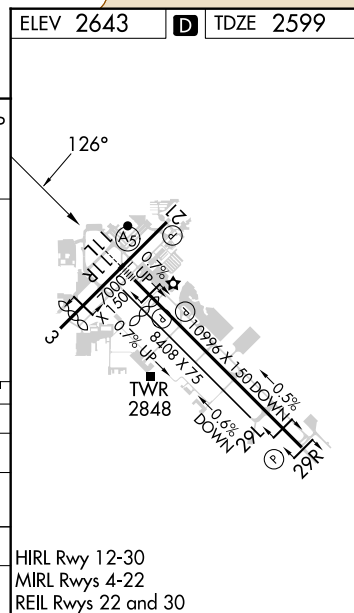
# RNAV (GPS) Z RWY 12

TUCSON INTL (TUS)

RNP APCH - GPS.		MALSR	MISSED APPROACH: Climb to 9000 direct CURGA and climbing right turn on 216° track to REBDE and climbing right turn on 305° track to TOYOP and hold.	
For uncompensated Baro-VNAV systems, LNAV/VNAV NA below -2°C or above 54°C. For inoperative ALS, increase LNAV/VNAV all Cats to RVR 4500 and increase LNAV C/D visibilities to 2 SM.				
ATIS <b>123.8 279.65</b>	TUCSON APP CON <b>119.4 318.1</b>	TUCSON TOWER <b>118.3 257.8</b>	GND CON <b>120.025 348.6</b>	CLNC DEL <b>126.65 326.2</b>



VGSI and RNAV glidepath not coincident (VGSI Angle 3.00/TCH 73).		7 NM	3000	9000	CURGA	216° tr	REBDE	305° tr	TOYOP
Holding Pattern		LIPT	WASON	CALLS	POCIB	2 NM to RWY 12	RWY 12		
10000 ← 306° (315° T)		7000 → 126° (135° T)	5700 → 126° (135° T)	5200	4600	4600			
GP 3.00° TCH 55									
		5 NM	2.3 NM	1.9 NM	4.2 NM	2			
CATEGORY	A	B	C	D					
LPV DA		2799/24	200 (200-½)						
LNAV/VNAV DA		2905/24	306 (400-½)						
LNAV MDA	3300/24	701 (800-½)	3300-1½	701 (800-1½)					
CIRCLING	3300-1	657 (700-1)	3300-2	657 (700-2)	3640-3	997 (1000-3)			



Please add CIH:  
"CLIMB TO 9000 DIRECT CURGA AND CLIMBING RIGHT TURN ON 216.04 TRACK TO REBDE AND CLIMBING RIGHT TURN ON 305.00 TRACK TO TOYOP AND HOLD, CONTINUE CLIMB-IN-HOLD TO 9000."

CHART FAS OBST: 3040 AAO 321053N/1110148W.

UTOMATED AL-430 RNAV (GPS) Z RWY 12  
UTOMATED AL-430 RNAV (GPS) Z RWY 12

1:750000

SW-4

31 AUG 2023

COMPILER: CG

REVIEWER:

DBL CHKR:

EFF: FIG

TUCSON, ARIZONA

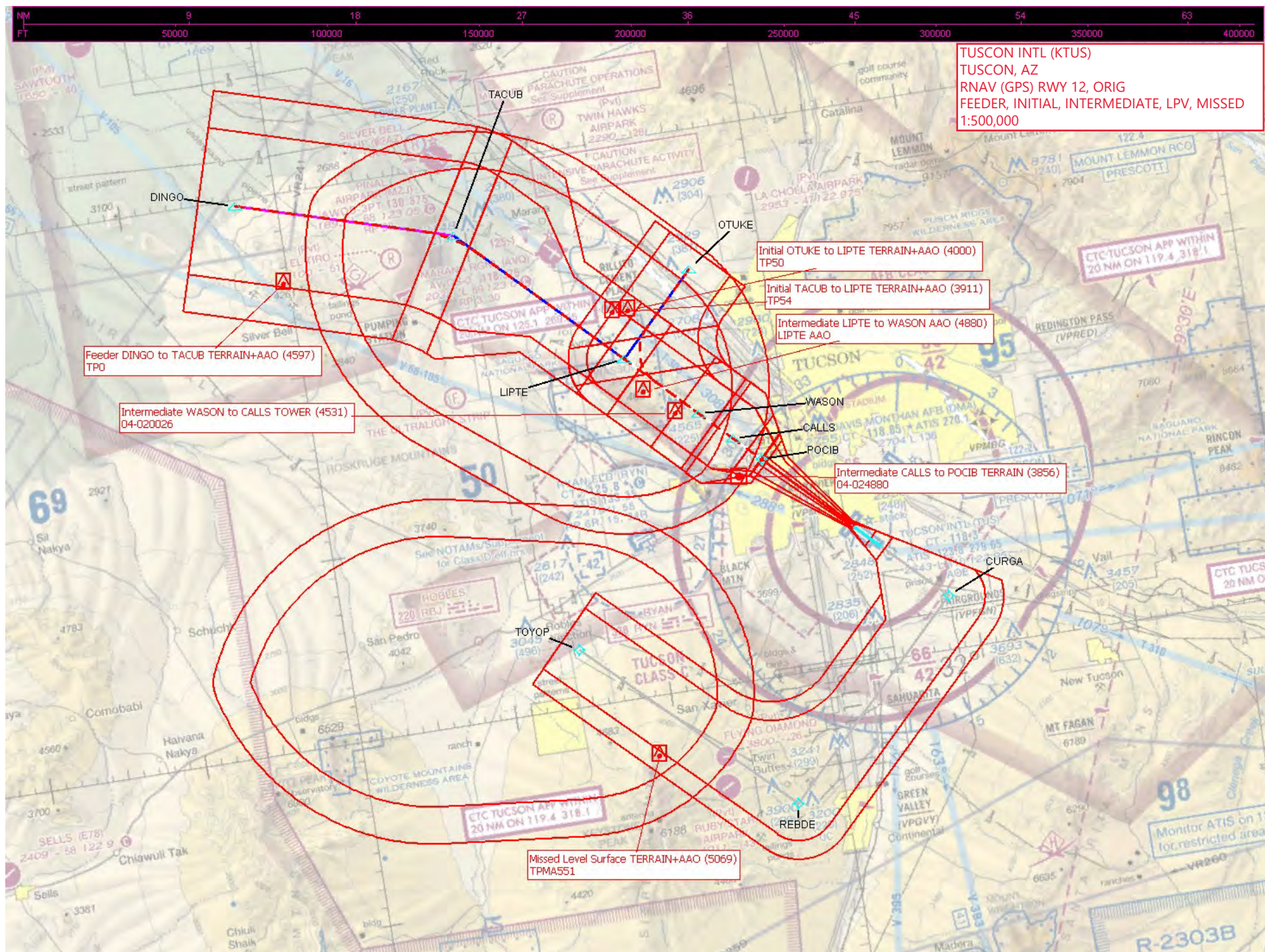
Orig FIG

32°07'N-110°56'W

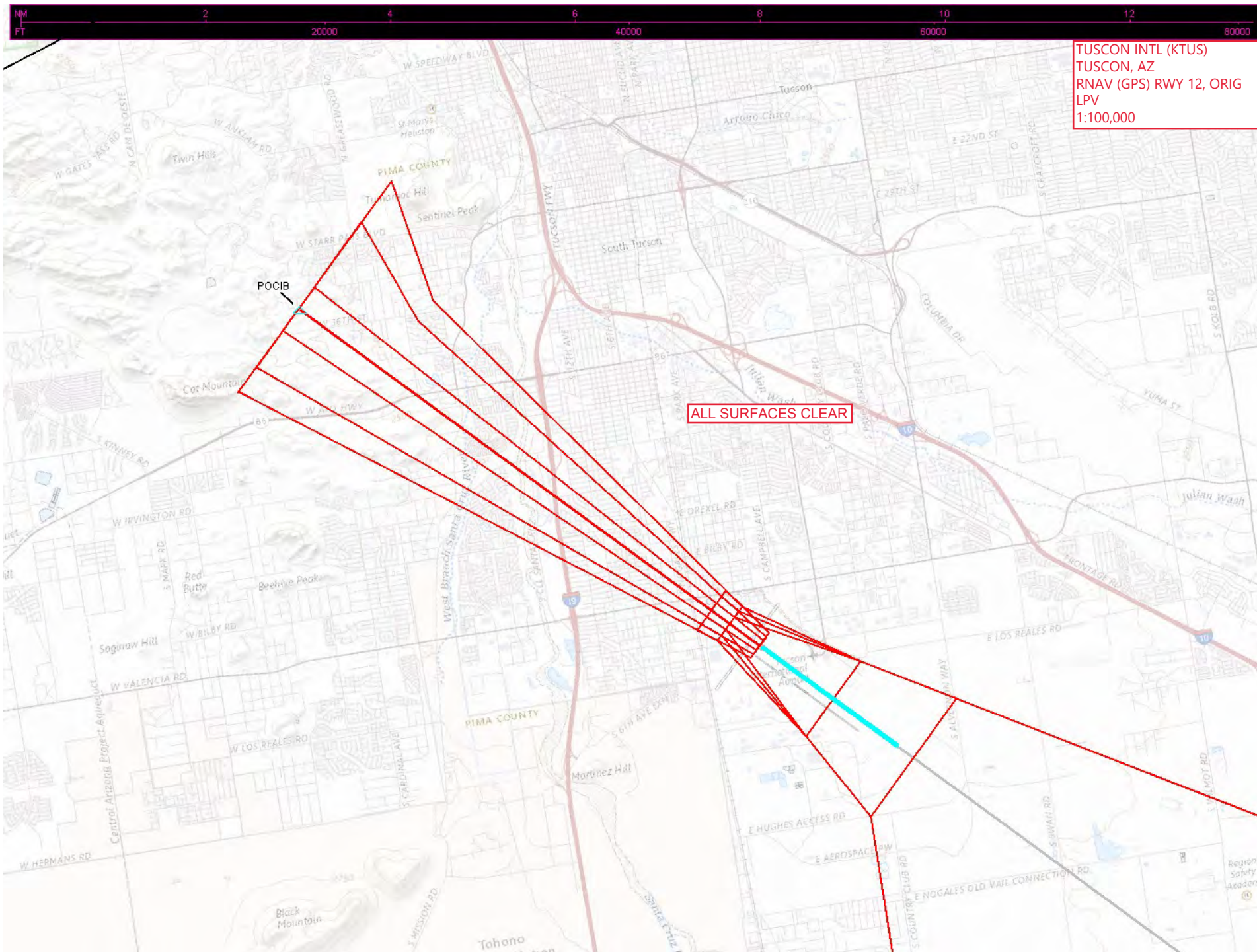
TUCSON INTL (TUS)

RNAV (GPS) Z RWY 12





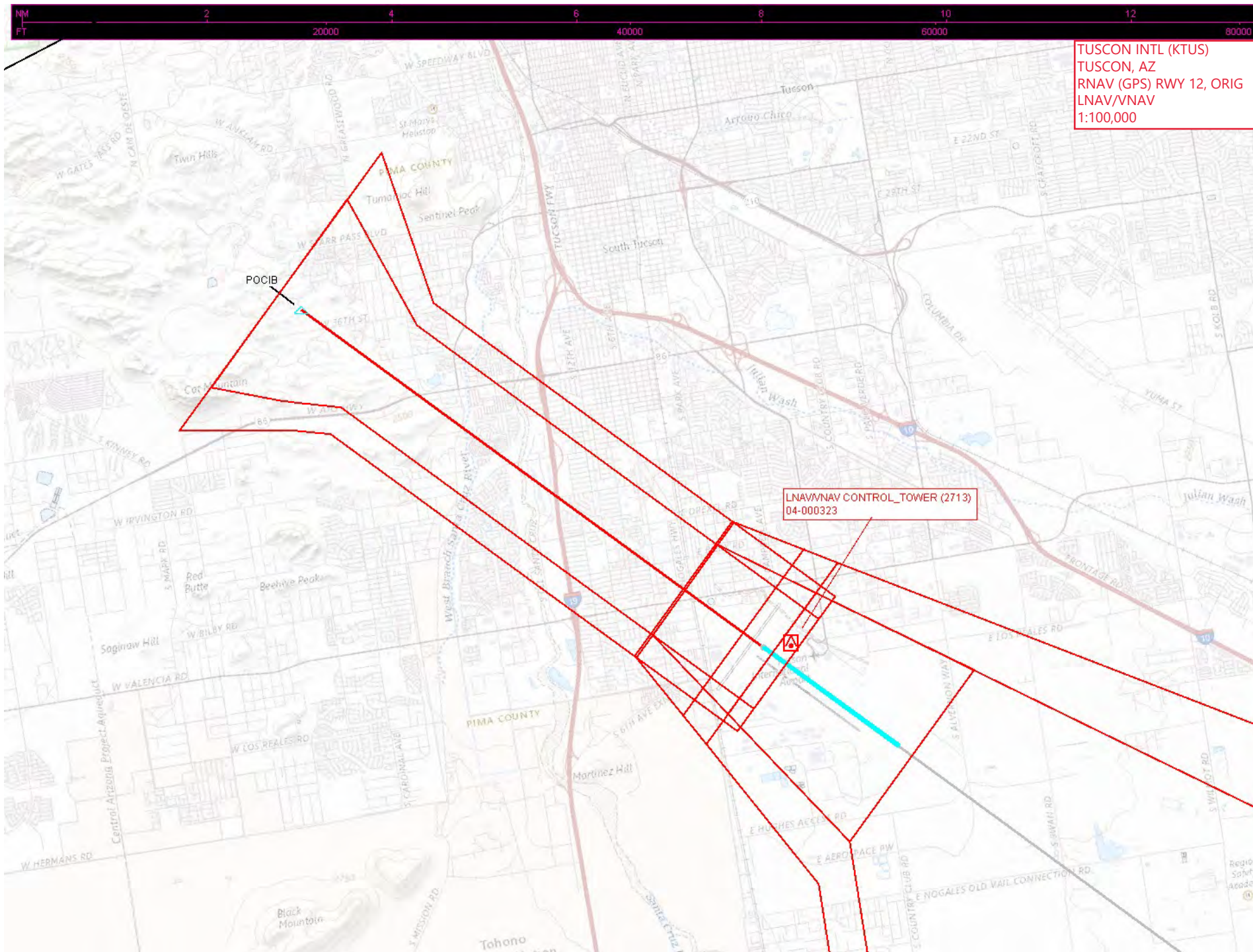




TUSCON INTL (KTUS)  
TUSCON, AZ  
RNAV (GPS) RWY 12, ORIG  
LPV  
1:100,000

ALL SURFACES CLEAR





TUSCON INTL (KTUS)  
TUSCON, AZ  
RNAV (GPS) RWY 12, ORIG  
LNAV/VNAV  
1:100,000

LNAV/VNAV CONTROL\_TOWER (2713)  
04-000323



