

Flight Procedures Cover Page	Task Action: FLIGHT CHECK	Task Type: IAP	Estimated Chart Date: 02/20/2025	APWS Task ID: 30468578A1EB4CF1A221EAE6B945528F	APWS Project ID: 70232D6B57524C1483009F901FD4F1A2
Procedure: RNAV (GPS) RWY 10 AMDT 3		Enroute: NO	Specialist: Hilley, Dustin		Agreement Number:
Airport ID: KCWV			Airport City: CLAXTON		State: GA
Facility ID:	Facility Type:	Flight Inspection Remark Type: New FC Slot			
<div>Procedure Comments: PENDING DATA USED. FAF OCOV RELOCATED FROM 321135.01N/0815842.59W TO 321135.07N/0815839.65W TO ALIGN WITH NEW PAPI GPA/TCH: 3.00/40 - PER ATC REQUEST CONTACT: JOHN BORDY; AJV-A 433 TRAINING TEAM LEAD 405.954.0980</div> <div>QUALITY 20 CHECKED</div> <div>QUALITY 41 CHECKED</div>					

FIPC BASIC FORM						
PROCEDURE: RNAV (GPS) RWY 10 AMDT 3			AIRPORT NAME: CLAXTON-EVANS COUNTY		AIRPORT ID: KCWV	SPECIAL CONTROL NO: AG-11-228-24
FAC ID: KCWV10.03		CITY: CLAXTON			ST: GA	ORIG CHART DATE: 02/20/2025
DFL TYPE: PROC/W	THIRD PARTY: <input type="checkbox"/> YES	EST. TIME ON SITE: 0.4	REIMB. NUMBER:	PTS TASK ID: 30468578A1EB4CF1A221EAE6B945528F		
PREFLIGHT NOTES						
REVIEWER:					DATE:	
COMMENTS:					CHECK ONE:	
					<input type="checkbox"/> FLT CK REQ <input type="checkbox"/> NFCR <input type="checkbox"/> REJECT	
						YES
					CPV COMPLETE?	X
PROCEDURE RESULTS						
INSPECTION DATE: 12/23/2024	CREW #: VN526	N #: N80	INSTRUMENT PROCEDURE STATUS: <input checked="" type="checkbox"/> SAT <input type="checkbox"/> SAT W/CHANGES <input type="checkbox"/> UNSAT		ARINC CODING: <input checked="" type="checkbox"/> SAT <input type="checkbox"/> SAT/GOLD <input type="checkbox"/> UNSAT	
FLIGHT INSPECTOR SIGNATURE: eric l geyer @ 12/23/2024 15:02			PRINTED NAME: GEYER, ERIC LEE			NOTAM INITIATED? <input type="checkbox"/> YES <input checked="" type="checkbox"/> NO
FLIGHT INSPECTOR REMARKS: Claxton-Evans County, Claxton, GA, RNAV (GPS) RWY 10 AMDT 3. SAT.						
IN-FLIGHT OBSTACLE REPORT						
OBSTRUCTION ID #:	COORDINATES OR LOCATION:	GNSS ALTITUDE (MSL):	BAROMETRIC ALTITUDE (MSL):	HEIGHT ABOVE GROUND LEVEL:		

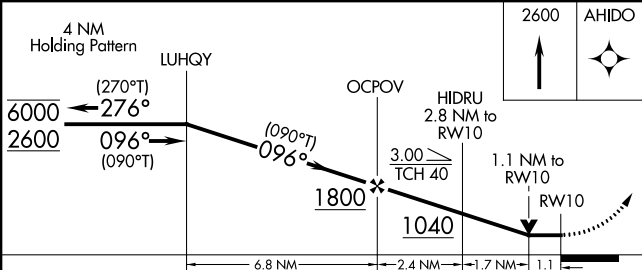
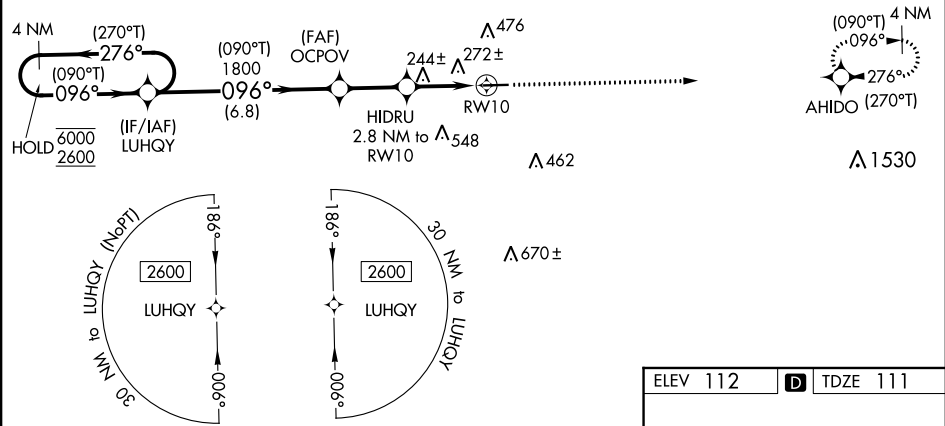
WAAS CH 45914 W10A	APP CRS 096°	Rwy Idg TDZE 111 Apt Elev 112
--	------------------------	---

RNAV (GPS) RWY 10
CLAXTON-EVANS COUNTY (C'WV)

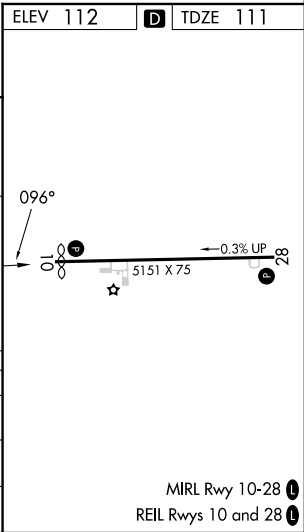
RNP APCH - GPS. ▼ Rwy 10 helicopter visibility reduction below ¾ SM NA. ▲	MISSED APPROACH: Climb to 2600 direct AHIDO and hold.
---	---

AWOS-3 120.075	JACKSONVILLE CENTER 132.925 363.2	UNICOM 122.8 (CTAF) 0
--------------------------	---	---------------------------------

PROTOTYPE-NOT FOR NAVIGATION



CATEGORY	A	B	C	D
LP MDA	500-1	389 (400-1)	500-1½	389 (400-1½)
LNAV MDA	540-1	429 (500-1)	540-1¼	429 (500-1¼)
CIRCLING	580-1 468 (500-1)	780-1 668 (700-1)	860-2¼ 748 (800-2¼)	860-2½ 748 (800-2½)



CLAXTON, GEORGIA

AL-9199 (FAA)

22167

WAAS CH 45914 W10A	APP CRS 096°	Rwy Idg TDZE 112 Apt Elev 112	5001
--	------------------------	---	-------------

OLD

RNAV (GPS) RWY 10

CLAXTON-EVANS COUNTY (CWV)

RNP APCH GPS.

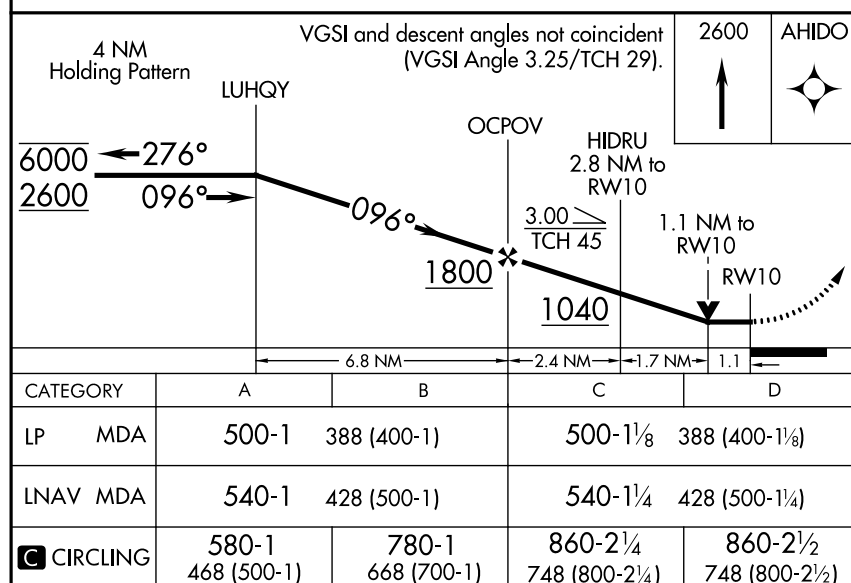
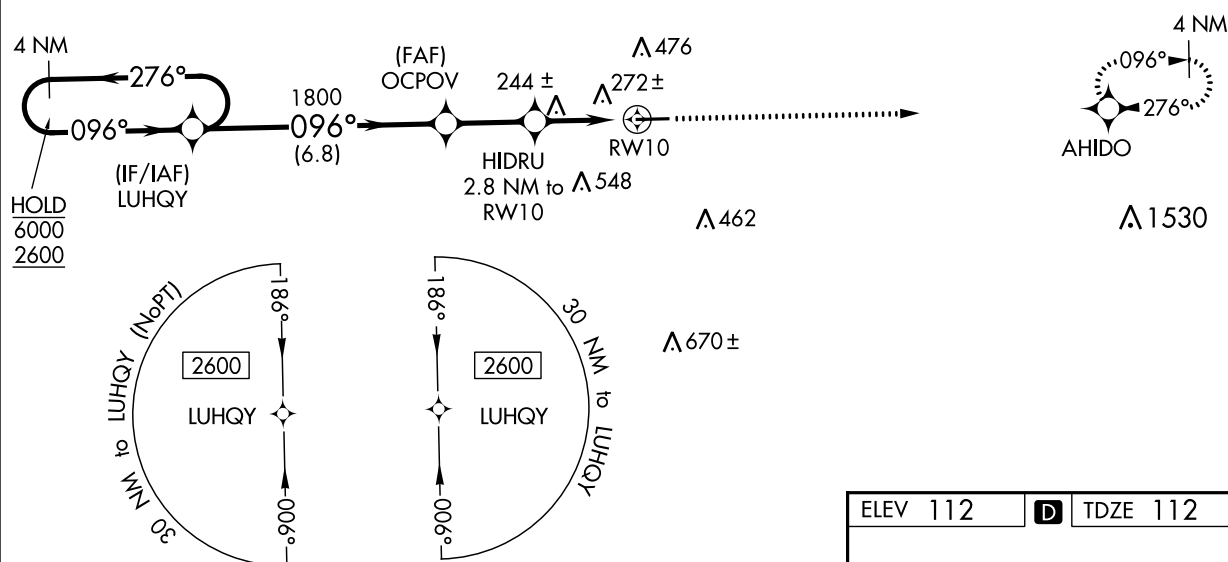


Straight-In Rwy 10 NA at night.



Rwy 10 helicopter visibility reduction below 1 SM NA.

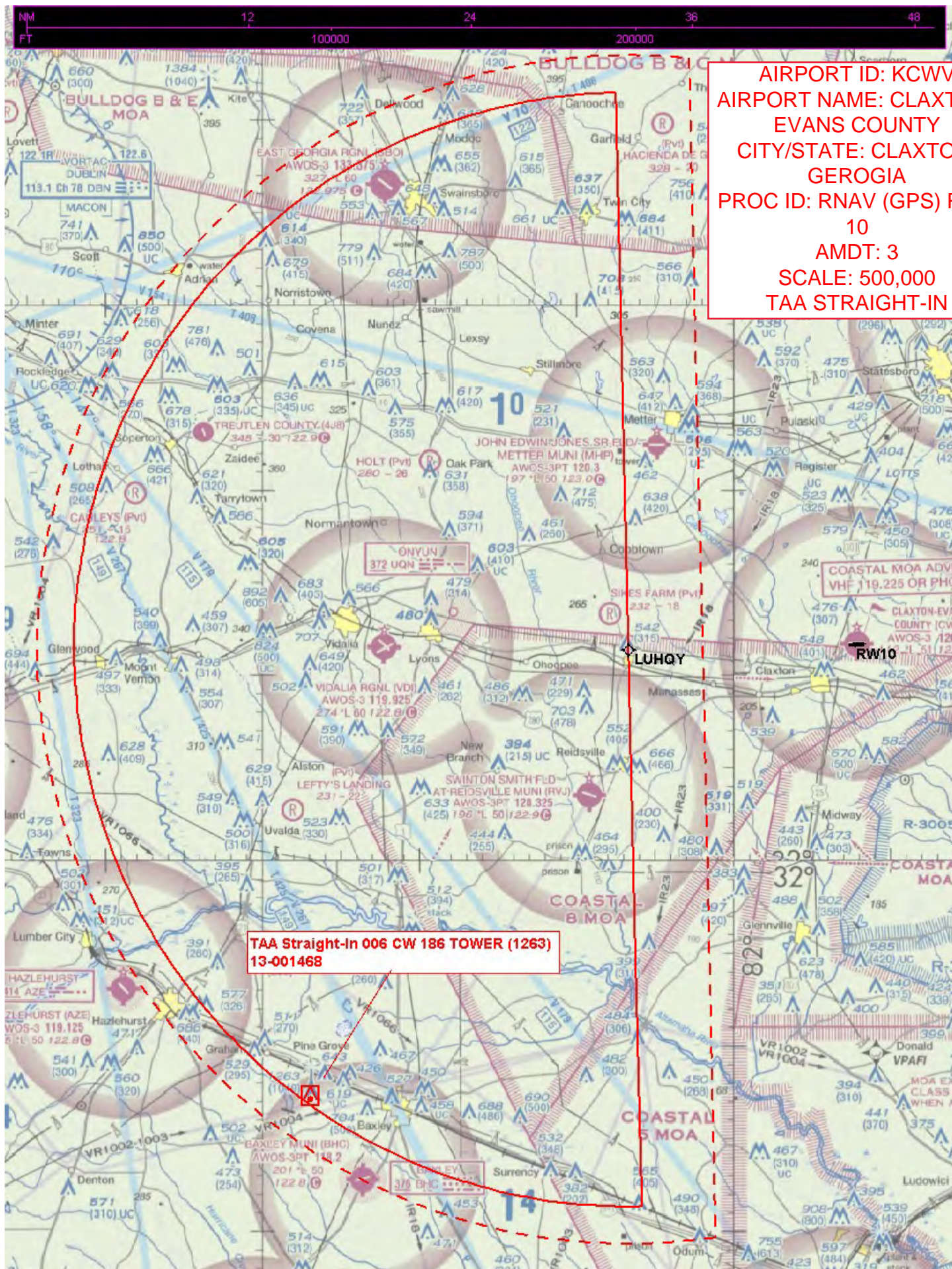
MISSED APPROACH: Climb to 2600 direct AHIDO and hold.

AWOS-3
120.075JACKSONVILLE CENTER
132.925 363.2UNICOM
122.8 (CTAF) 1CLAXTON, GEORGIA
Amdt 2A 16JUN22

32°12'N-81°52'W

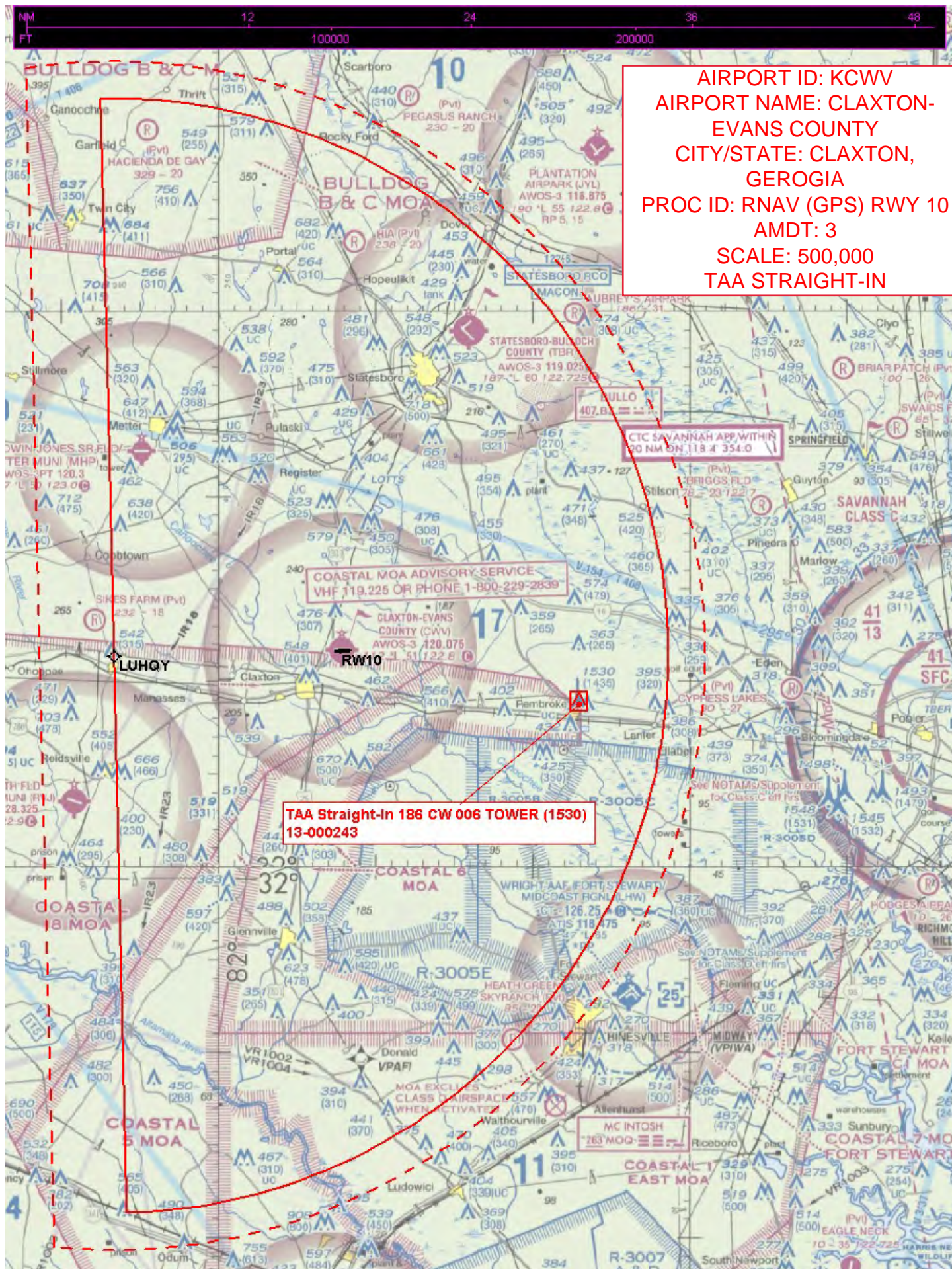
CLAXTON-EVANS COUNTY (CWV)
RNAV (GPS) RWY 10MIRL Rwy 10-28 1
REIL Rwy 10 and 28 1

SE-4, 11 JUL 2024 to 08 AUG 2024



AIRPORT ID: KCWX
AIRPORT NAME: CLAXTON-
EVANS COUNTY
CITY/STATE: CLAXTON,
GEORGIA
PROC ID: RNAV (GPS) RWY
10
AMDT: 3
SCALE: 500,000
TAA STRAIGHT-IN

TAA Straight-In 006 CW 186 TOWER (1263)
13-001468



AIRPORT ID: KCWV
AIRPORT NAME: CLAXTON-
EVANS COUNTY
CITY/STATE: CLAXTON,
GEROGIA
PROC ID: RNAV (GPS) RWY 10
AMDT: 3
SCALE: 500,000
TAA STRAIGHT-IN

TAA Straight-In 186 CW 006 TOWER (1530)
13-000243

COASTAL MOA ADVISORY SERVICE
VHF 119.225 OR PHONE 1-800-229-2839

CTC SAVANNAH APP. WITHIN
20 NM ON 118.4 354.0

MC INTOSH
263 MOG

AIRPORT ID: KCWV
**AIRPORT NAME: CLAXTON-
 EVANS COUNTY**
**CITY/STATE: CLAXTON,
 GEORGIA**
PROC ID: RNAV (GPS) RWY 10
AMDT: 3
SCALE: 500,000

Intermediate LUHQY to PFAF TOWER (542)
 13-003570

LNAY HIDRU to KCWV:RWY10:AER TREE (272)
 13-119308

LNAY PFAF to HIDRU TERRAIN+AAO (391)
 TP50

Missed Level Surface TOWER (574)
 13-002087

Missed Holding AHIDO TOWER (1530)
 13-000243

**CTC SAVANNAH APP:WITHIN
 20 NM ON:118.4° 354.0**

HILPT LUHQY TOWER (703)
 13-002264

ONUYU 372 UON
 13-002264

SAVANNAH CLASS C
 13-002264

COASTAL 8 MOA
 13-002264

COASTAL 6 MOA
 13-002264

COASTAL 5 MOA
 13-002264

COASTAL 4 MOA
 13-002264

COASTAL 3 MOA
 13-002264

COASTAL 2 MOA
 13-002264

COASTAL 1 MOA
 13-002264

COASTAL 0 MOA
 13-002264

COASTAL -1 MOA
 13-002264

COASTAL -2 MOA
 13-002264

COASTAL -3 MOA
 13-002264

COASTAL -4 MOA
 13-002264

COASTAL -5 MOA
 13-002264

COASTAL -6 MOA
 13-002264

COASTAL -7 MOA
 13-002264

COASTAL -8 MOA
 13-002264

COASTAL -9 MOA
 13-002264

COASTAL -10 MOA
 13-002264

COASTAL -11 MOA
 13-002264

COASTAL -12 MOA
 13-002264

COASTAL -13 MOA
 13-002264

COASTAL -14 MOA
 13-002264

COASTAL -15 MOA
 13-002264

COASTAL -16 MOA
 13-002264

COASTAL -17 MOA
 13-002264

COASTAL -18 MOA
 13-002264

COASTAL -19 MOA
 13-002264

COASTAL -20 MOA
 13-002264

COASTAL -21 MOA
 13-002264

COASTAL -22 MOA
 13-002264

COASTAL -23 MOA
 13-002264

COASTAL -24 MOA
 13-002264

COASTAL -25 MOA
 13-002264

COASTAL -26 MOA
 13-002264

COASTAL -27 MOA
 13-002264

COASTAL -28 MOA
 13-002264

COASTAL -29 MOA
 13-002264

COASTAL -30 MOA
 13-002264

COASTAL -31 MOA
 13-002264

COASTAL -32 MOA
 13-002264

COASTAL -33 MOA
 13-002264

COASTAL -34 MOA
 13-002264

COASTAL -35 MOA
 13-002264

COASTAL -36 MOA
 13-002264

COASTAL -37 MOA
 13-002264

COASTAL -38 MOA
 13-002264

COASTAL -39 MOA
 13-002264

COASTAL -40 MOA
 13-002264

COASTAL -41 MOA
 13-002264

COASTAL -42 MOA
 13-002264

COASTAL -43 MOA
 13-002264

COASTAL -44 MOA
 13-002264

COASTAL -45 MOA
 13-002264

COASTAL -46 MOA
 13-002264

COASTAL -47 MOA
 13-002264

COASTAL -48 MOA
 13-002264

COASTAL -49 MOA
 13-002264

COASTAL -50 MOA
 13-002264

COASTAL -51 MOA
 13-002264

COASTAL -52 MOA
 13-002264

COASTAL -53 MOA
 13-002264

COASTAL -54 MOA
 13-002264

COASTAL -55 MOA
 13-002264

COASTAL -56 MOA
 13-002264

COASTAL -57 MOA
 13-002264

COASTAL -58 MOA
 13-002264

COASTAL -59 MOA
 13-002264

COASTAL -60 MOA
 13-002264

COASTAL -61 MOA
 13-002264

COASTAL -62 MOA
 13-002264

COASTAL -63 MOA
 13-002264

COASTAL -64 MOA
 13-002264

COASTAL -65 MOA
 13-002264

COASTAL -66 MOA
 13-002264

COASTAL -67 MOA
 13-002264

COASTAL -68 MOA
 13-002264

COASTAL -69 MOA
 13-002264

COASTAL -70 MOA
 13-002264

COASTAL -71 MOA
 13-002264

COASTAL -72 MOA
 13-002264

COASTAL -73 MOA
 13-002264

COASTAL -74 MOA
 13-002264

COASTAL -75 MOA
 13-002264

COASTAL -76 MOA
 13-002264

COASTAL -77 MOA
 13-002264

COASTAL -78 MOA
 13-002264

COASTAL -79 MOA
 13-002264

COASTAL -80 MOA
 13-002264

COASTAL -81 MOA
 13-002264

COASTAL -82 MOA
 13-002264

COASTAL -83 MOA
 13-002264

COASTAL -84 MOA
 13-002264

COASTAL -85 MOA
 13-002264

COASTAL -86 MOA
 13-002264

COASTAL -87 MOA
 13-002264

COASTAL -88 MOA
 13-002264

COASTAL -89 MOA
 13-002264

COASTAL -90 MOA
 13-002264

COASTAL -91 MOA
 13-002264

COASTAL -92 MOA
 13-002264

COASTAL -93 MOA
 13-002264

COASTAL -94 MOA
 13-002264

COASTAL -95 MOA
 13-002264

COASTAL -96 MOA
 13-00226

AIRPORT ID: KCWV
**AIRPORT NAME: CLAXTON-
 EVANS COUNTY**
**CITY/STATE: CLAXTON,
 GEORGIA**
PROC ID: RNAV (GPS) RWY 10
AMDT: 3
SCALE: 100,000
LP

LP HIDRU to KCWV:RW10:AER TREE (244)
13-114479

LP PFAF to HIDRU TERRAIN+AAO (374)
TP81

OCPOV

HIDRU

RW10

AIRPORT ID: KCWV
AIRPORT NAME: CLAXTON-
EVANS COUNTY
CITY/STATE: CLAXTON,
GEORGIA
PROC ID: RNAV (GPS) RWY 10
AMDT: 3
SCALE: 100,000
LP

LP HIDRU to KCWV:RW10:AER TREE (244)
13-114479

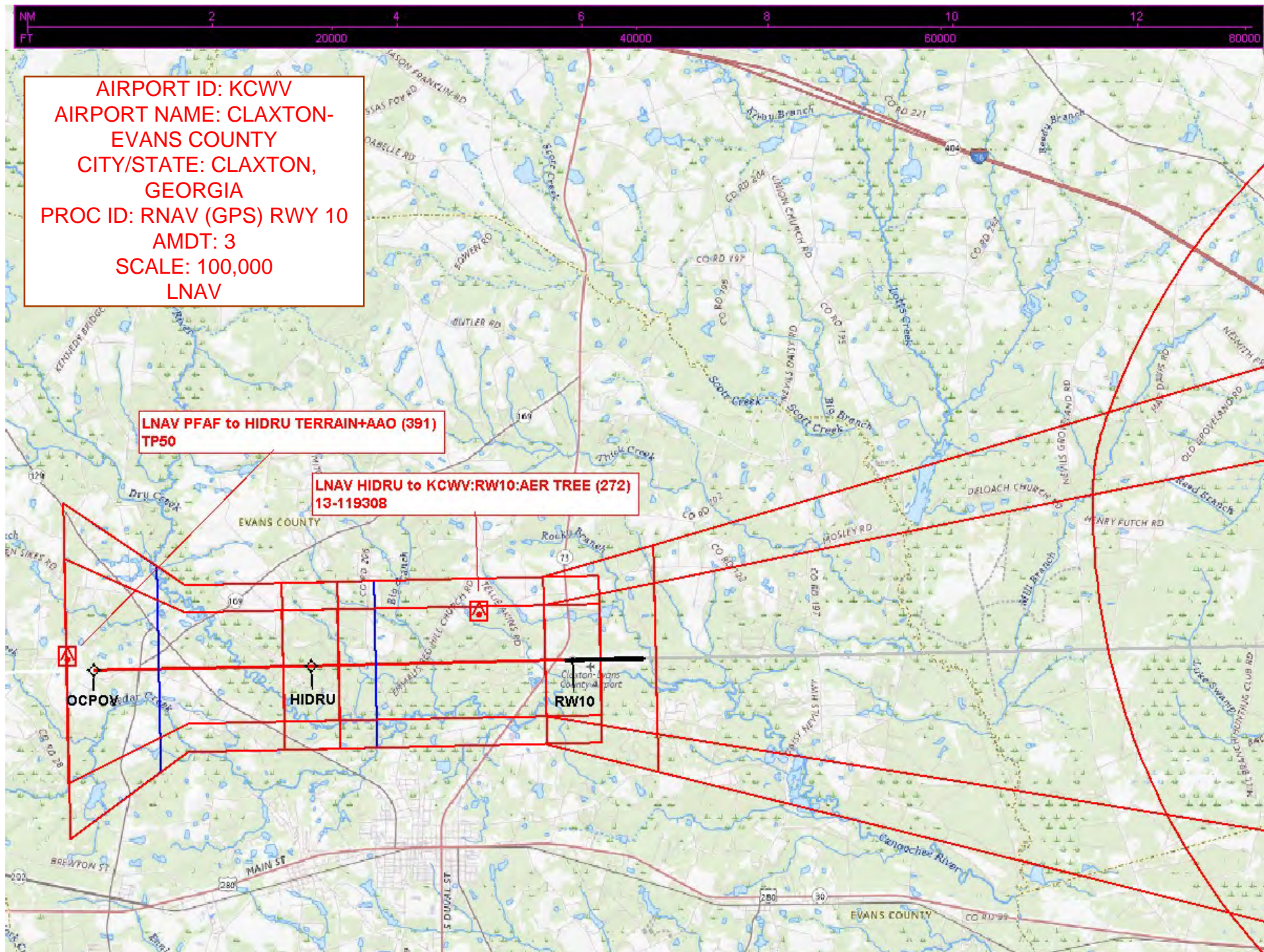
LP PFAF to HIDRU TERRAIN+AAO (374)
TP81

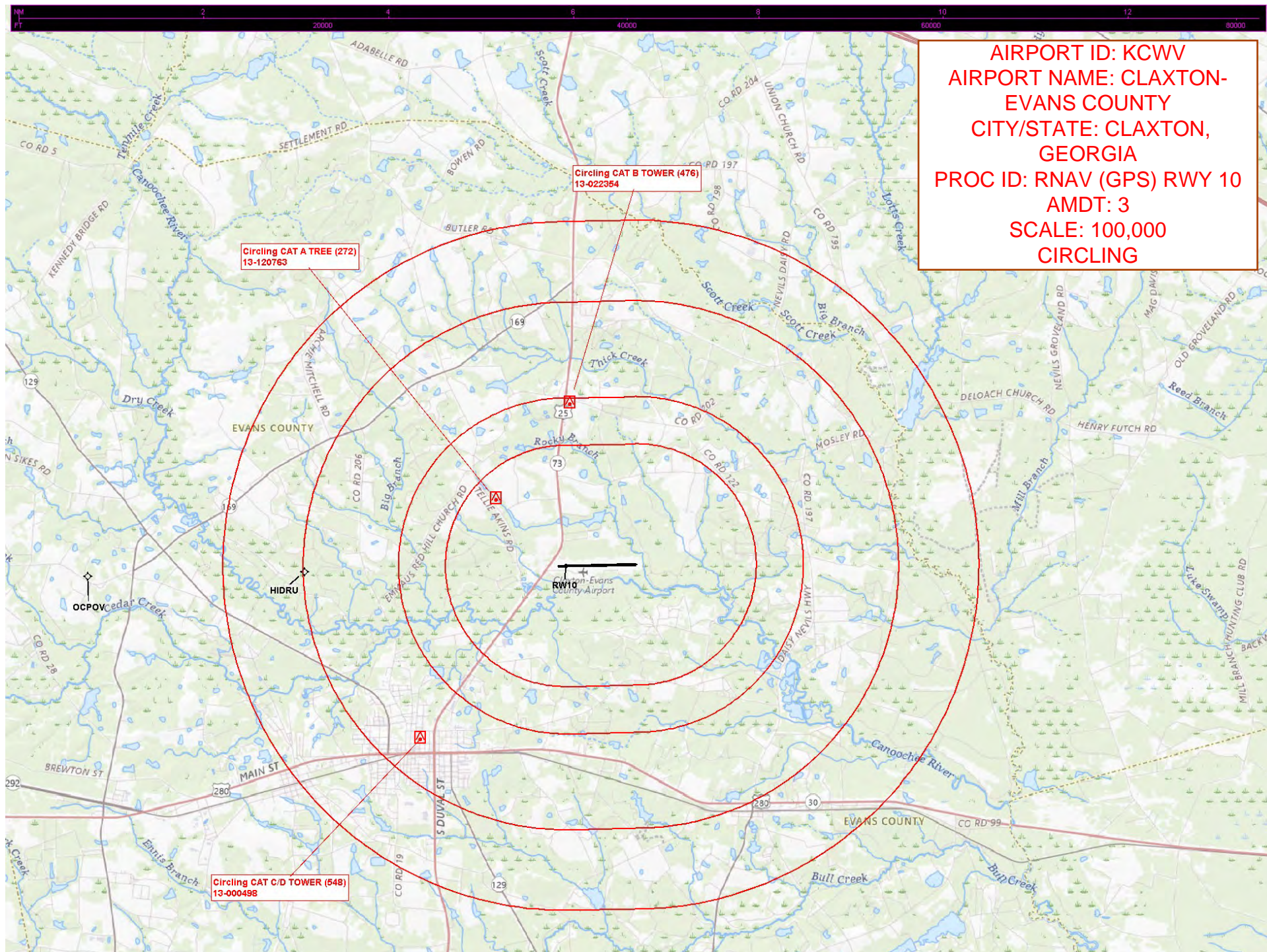
OCPV
HIDRU
RW10

AIRPORT ID: KCWV
AIRPORT NAME: CLAXTON-EVANS COUNTY
CITY/STATE: CLAXTON, GEORGIA
PROC ID: RNAV (GPS) RWY 10
AMDT: 3
SCALE: 100,000
LP

LP HIDRU to KCWV:RW10:AER TREE (244) 13-114479

LP PFAF to HIDRU TERRAIN+AAO (374) TP81





AIRPORT ID: KCWV
AIRPORT NAME: CLAXTON-
EVANS COUNTY
CITY/STATE: CLAXTON,
GEORGIA
PROC ID: RNAV (GPS) RWY 10
AMDT: 3
SCALE: 100,000
CIRCLING