



Flight Procedures Cover Page	Task Action: P-NOTAM	Task Type: IAP	Estimated Chart Date: 12/02/2021	APWS Task ID: 2FD863A91847489589C2FAC7B70AE64F	APWS Project ID: CCB8093719994A859E61F83687FDC994
Procedure: RNAV (GPS) RWY 35 AMDT 0B		Enroute: NO	Specialist: Copeland, Guy		Agreement Number:
Airport ID: KGBD			Airport City: GREAT BEND		State: KS
Facility ID:	Facility Type:	Flight Inspection Remark Type:			
<div> <div> Procedure Comments: P-NOTAM </div> <div> This Cancels FDC 0/3449 Order 8260.3, Chapter 2, New Circling Criteria Applied Contact Dave Teffeteller at 202-267-5177 </div> <div>   </div> </div>					

WAAS CH 65710 W35A	APP CRS 352°	Rwy Idg 7851 TDZE 1883 Apt Elev 1887
--	------------------------	---

RNAV (GPS) RWY 35

GREAT BEND MUNI (GBD)

⚠ For uncompensated Baro-VNAV systems, LNAV/VNAV NA below -18°C (0°F) or above 54°C (130°F). DME/DME RNP-0.3 NA. When local altimeter setting not received, use Russell Muni altimeter setting and increase all DA 77 feet and all MDA 80 feet. Increase LPV and LNAV/VNAV all Cats, LNAV Cat C and Circling Cat D visibility ¼ mile. For inoperative MALSR increase LPV all Cats visibility to 1 mile. For inoperative MALSR when using Russell Muni altimeter setting increase LPV all Cats and LNAV Cat D visibility to 1¼ mile. Baro-VNAV and VDP NA when using Russell Muni altimeter setting. Inoperative table does not apply to LNAV Cat D.

MALSR

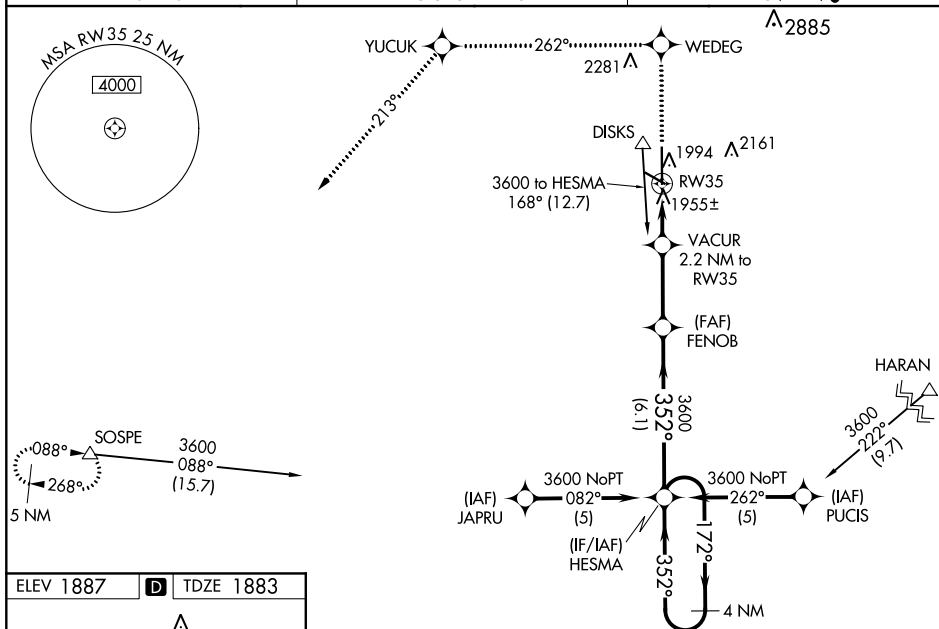


MISSED APPROACH: Climb to 4500 direct WEDEG and via 262° track to YUCUK then via 213° track to SOSPE and hold.

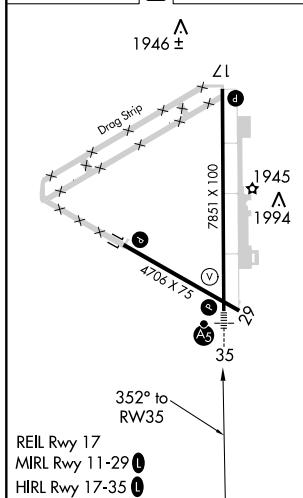
AWOS-3PT
119.275

KANSAS CITY CENTER
118.8 322.425

UNICOM
122.8 (CTAF) 0



ELEV 1887 **D** TDZE 1883



4500	WEDEG	262° tr	YUCUK	213° tr	SOSPE
*LNAV only					
<p>VACUR 2.2 NM to RW35</p> <p>*0.9 NM to RW35</p> <p>2620*</p> <p>352°</p> <p>3600</p> <p>172°</p> <p>3600</p> <p>4 NM Holding Pattern</p> <p>GP 3.00°</p> <p>TCH 49</p>					
CATEGORY	A	B	C	D	
LPV DA	2171-½	288 (300-½)			
LNAV/VNAV DA	2222-¾	339 (400-¾)			
LNAV MDA	2220-½	337 (400-½)	2220-1	337 (400-1)	
CIRCLING	2300-1	2340-1	2340-1½	2500-2	
	413 (500-1)	453 (500-1)	453 (500-1½)	613 (700-2)	

