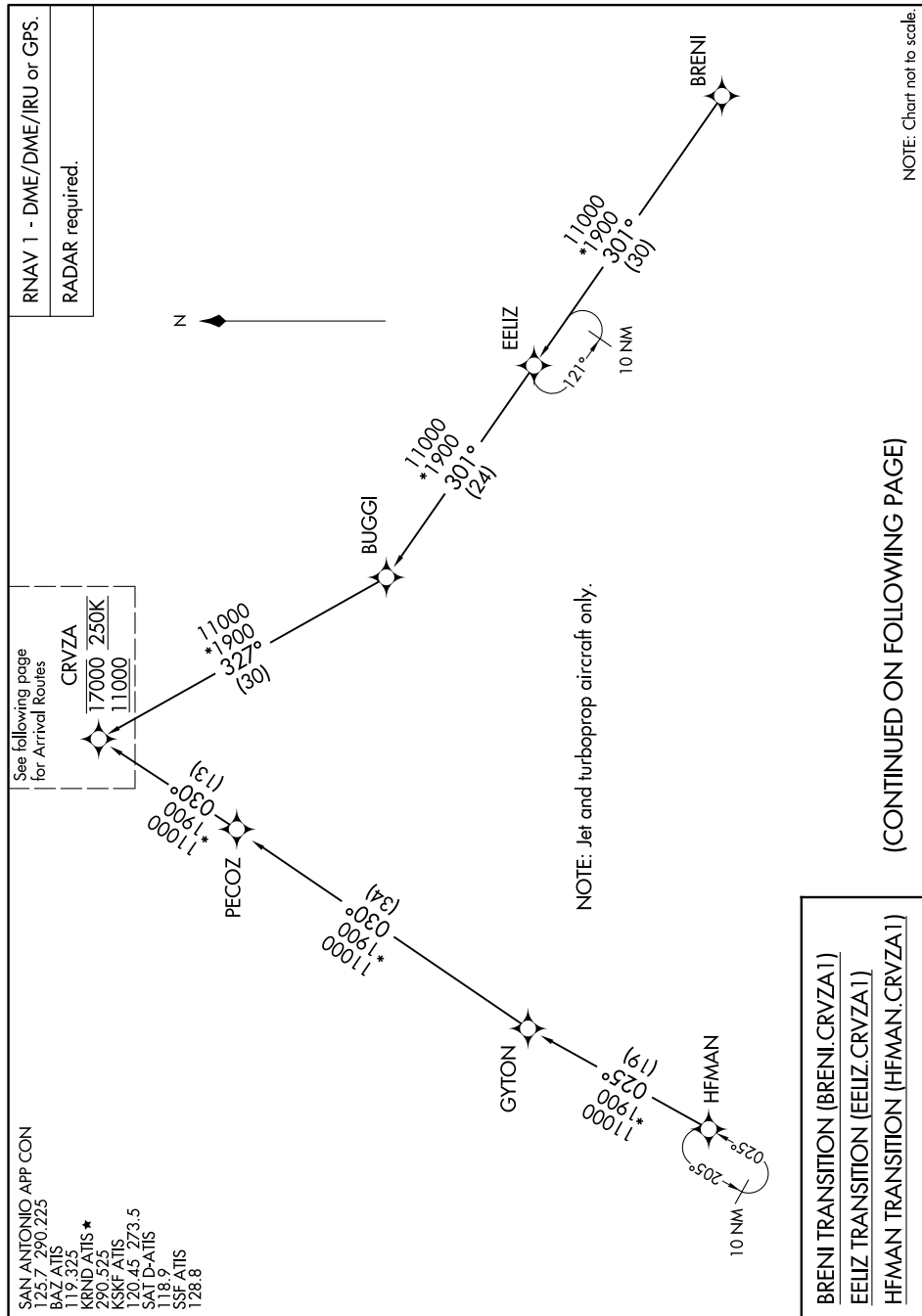


Flight Procedures Cover Page	Task Action: Abbreviated Amendment	Task Type: STAR	Estimated Chart Date: 11/27/2025	APWS Task ID: 2F783EB1326E4450977E7EBD08899660	APWS Project ID: 3663C6683080432B9160461CC2356CD3
Procedure: STAR CRVZA TWO (RNAV) SAN ANTONIO TX KSAT		Enroute: YES	Specialist: Gorman, Barbara		Agreement Number:
Airport ID: KSAT			Airport City: SAN ANTONIO		State: TX
Facility ID:	Facility Type:	Flight Inspection Remark Type:			
<div>Procedure Comments: ABBREVIATED AMDT TO CHANGE WP ERROR TO AIROR DUE TO SAFETY CONCERN. PROCESSED IAW TECHNICAL SUPPORT GROUP (AJF-17) MEMO DATED 07/07/2021 GUIDANCE FOR PROCEDURAL CHANGES REQUIRING FLIGHT INSPECTION/VALIDATION. CONTACT: CASIMIR TABAKA: 405.954.7931</div> <div>07/08/2025</div> <div><div>QUALITY 41 CHECKED</div><div>QUALITY 14 CHECKED</div></div>					

CRVZA ONE ARRIVAL (RNAV) Transition Routes

SAN ANTONIO, TEXAS



(CONTINUED ON FOLLOWING PAGE)

SC-3, 15 MAY 2025 to 12 JUN 2025

NOTE: Chart not to scale.

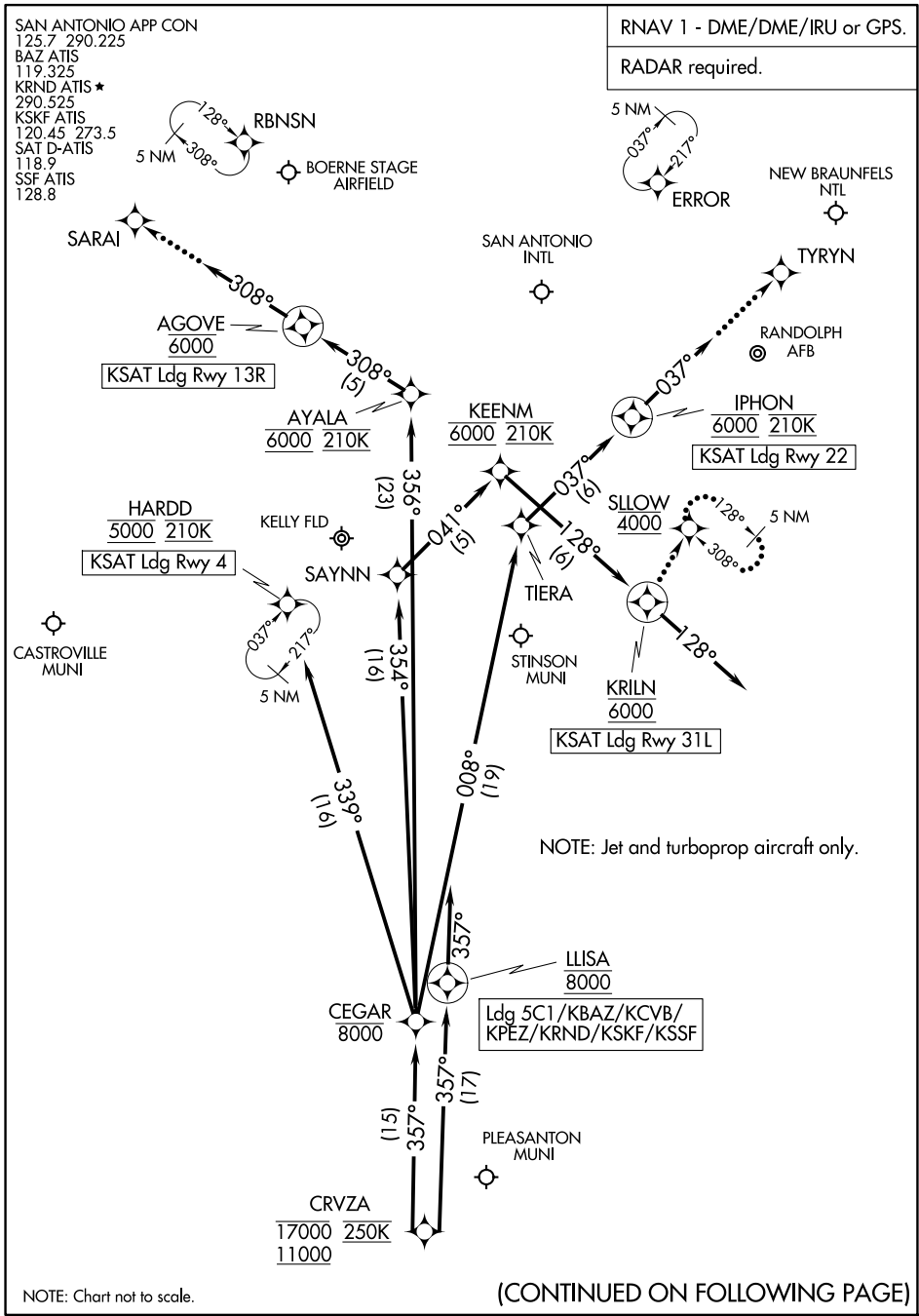
CRVZA ONE ARRIVAL (RNAV) Transition Routes

SAN ANTONIO, TEXAS

(CRVZA.CRVZA1) 25JAN24

CRVZA ONE ARRIVAL (RNAV) Arrival Routes

SAN ANTONIO, TEXAS



SC-3, 15 MAY 2025 to 12 JUN 2025

SC-3, 15 MAY 2025 to 12 JUN 2025

ARRIVAL ROUTE DESCRIPTION

SAN ANTONIO INTL (KSAT): From CRVZA on track 357° to cross CEGAR at or below 8000.

LANDING KSAT RUNWAY 4: From CEGAR on track 339° to cross HARDD at 5000 and at 210K. Expect ILS or LOC RWY 4 approach.

LANDING KSAT RUNWAY 13R: From CEGAR on track 356° to cross AYALA at 6000 and at 210K, then on track 308° to cross AGOVE at 6000, then on track 308°. Expect RADAR vectors to final approach course.

LANDING KSAT RUNWAY 22: From CEGAR on track 008° to TIERA, then on track 037° to cross IPHON at 6000 and at 210K, then on track 037°. Expect RADAR vectors to final approach course.

LANDING KSAT RUNWAY 31L: From CEGAR on track 354° to SAYNN, then on track 041° to cross KEENM at 6000 and at 210K, then on track 128° to cross KRILN at 6000, then on track 128°. Expect RADAR vectors to final approach course.

LANDING KSKF/KBAZ/KCVB/KSSF/KPEZ/5C1/KRND: From CRVZA on track 357° to cross LLISA at 8000, then on track 357°. Expect RADAR vectors to final approach course.

LOST COMMUNICATIONS

KSAT RUNWAY 13R: After AGOVE proceed to SARAI, then on ILS or LOC RWY 13R or RNAV (GPS) Y RWY 13R approach.

KSAT RUNWAY 22: After IPHON proceed to TYRYN, then on RNAV (GPS) Y RWY 22 approach.

KSAT RUNWAY 31L: After KRILN proceed to SLOW at 4000 and hold.