

Flight Procedures Cover Page	Task Action: FLIGHT CHECK	Task Type: STAR	Estimated Chart Date: 04/20/2023	APWS Task ID: 2F7770DFB1954C9E8F23BE8CB6CF0851	APWS Project ID: 95391760BC244303A137850F6A125FE7
Procedure: STAR PANGG (RNAV) FOUR CHICAGO IL KMDW		Enroute: YES	Specialist: Campbell, Colin		Agreement Number:
Airport ID: KMDW			Airport City: CHICAGO		State: IL
Facility ID:	Facility Type:	Flight Inspection Remark Type: New FC Slot			
<div>Procedure Comments:</div> <div>LFD VOR MON</div> <div>FLIGHT CHECK: PLEASE VALIDATE HILLS TERMINUS (CROSS AT 5000 AND AT 240 KIAS) IN CONJUNCTION WITH ILS 31C CAT D AIRCRAFT CATEGORY.</div> <div>CONTACT: ALLAN WILL, AJV-A423, (405) 954-6103</div> <div><div>Digitally signed by</div><div>JASON KRETSCHMER</div><div>Dec 22, 2022</div></div> <div><div>12/20/2022</div><div><div>QUALITY 38 CHECKED</div><div>QUALITY 14 CHECKED</div></div></div>					

FIPC BASIC FORM						
PROCEDURE: STAR PANGG (RNAV) FOUR CHICAGO IL KMDW			AIRPORT NAME: CHICAGO MIDWAY INTL		AIRPORT ID: KMDW	SPECIAL CONTROL NO: BG-12-196-22
FAC ID: PANGG4		CITY: CHICAGO			ST: IL	ORIG CHART DATE: 04/20/2023
DFL TYPE: PROC/D	THIRD PARTY: <input type="checkbox"/> YES	EST. TIME ON SITE: 0.5	REIMB. NUMBER: AC0721	PTS TASK ID: 2F7770DFB1954C9E8F23BE8CB6CF0851		
PREFLIGHT NOTES						
REVIEWER:					DATE:	
COMMENTS:					CHECK ONE:	
					<input type="checkbox"/> FLT CK REQ <input type="checkbox"/> NFCR <input type="checkbox"/> REJECT	
						YES
					CPV COMPLETE?	X
PROCEDURE RESULTS						
INSPECTION DATE: 01/15/2023	CREW #: VN285	N #: N68	INSTRUMENT PROCEDURE STATUS: <input checked="" type="checkbox"/> SAT <input type="checkbox"/> SAT W/CHANGES <input type="checkbox"/> UNSAT		ARINC CODING: <input checked="" type="checkbox"/> SAT <input type="checkbox"/> SAT/GOLD <input type="checkbox"/> UNSAT	
FLIGHT INSPECTOR SIGNATURE: michael a greenwood @ 01/16/2023 19:52			PRINTED NAME: GREENWOOD, MICHAEL AARON			NOTAM INITIATED? <input type="checkbox"/> YES <input checked="" type="checkbox"/> NO
FLIGHT INSPECTOR REMARKS: SAT as Proposed.						
IN-FLIGHT OBSTACLE REPORT						
OBSTRUCTION ID #:	COORDINATES OR LOCATION:	GNSS ALTITUDE (MSL):	BAROMETRIC ALTITUDE (MSL):	HEIGHT ABOVE GROUND LEVEL:		

CHICAGO APP CON
128.2 353.875
D-ATIS
132.75

RNAV 1-DME/DME/IRU or GPS.
RADAR required.

ARRIVAL ROUTE DESCRIPTION

BAGEL TRANSITION (BAGEL.PANGG4)

FORT WAYNE TRANSITION (FWA.PANGG4)

LLTCH TRANSITION (LLTCH.PANGG4)

From PANGG on track 274° to MEGGZ, then on track 274° to cross AWSUM at 10000, then on track 273° to IROCK, then on track 273° to cross HALIE at 6000.

LANDING RWY 4R: From HALIE on track 278° to cross OLCYK at or above 4000. Expect RNAV (RNP) Y Rwy 4R approach.

LANDING RWY 13C: From HALIE on track 278° to cross OLCYK at or above 4000, then on track 279° to cross TINLY at or above 4000, then on track 279°. Expect RADAR vectors to final approach course.

LANDING RWY 22L: From HALIE on track 343° to cross GERMN at or above 4000, then on track 343° to LNAME, then on track 339° to BOCAH, then on track 274° to cross TACTT at 3000. Expect RNAV (RNP/GPS) Rwy 22L approach or RADAR vectors to final approach course.

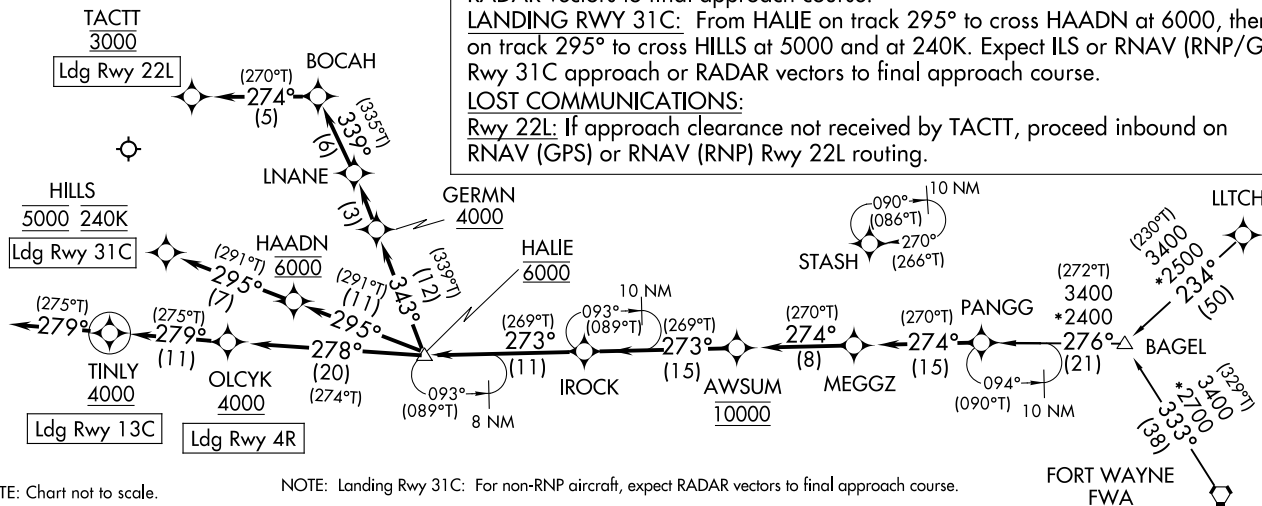
LANDING RWY 31C: From HALIE on track 295° to cross HAADN at 6000, then on track 295° to cross HILLS at 5000 and at 240K. Expect ILS or RNAV (RNP/GPS) Rwy 31C approach or RADAR vectors to final approach course.

LOST COMMUNICATIONS:

Rwy 22L: If approach clearance not received by TACTT, proceed inbound on RNAV (GPS) or RNAV (RNP) Rwy 22L routing.



PROTOTYPE-NOT
FOR NAVIGATION



NOTE: Chart not to scale.

NOTE: Landing Rwy 31C: For non-RNP aircraft, expect RADAR vectors to final approach course.

PANGG THREE ARRIVAL (RNAV)
(PANGG:PANGG3) 25JUN15CHICAGO APP CON
128.2 353.875
D-ATIS
132.75

ARRIVAL ROUTE DESCRIPTION

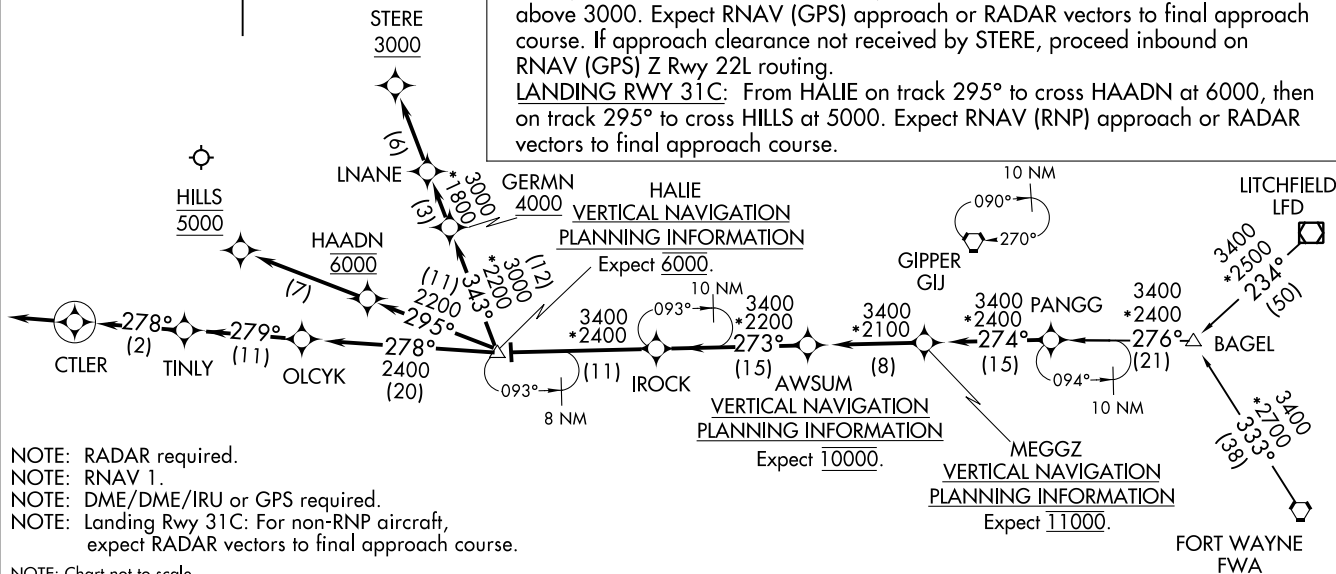
BAGEL TRANSITION (BAGEL.PANGG3)FORT WAYNE TRANSITION (FWA.PANGG3)LITCHFIELD TRANSITION (LFD.PANGG3)

From PANGG on track 274° to MEGGZ, then on track 274° to AWSUM, then on track 273° to IROCK, then on track 273° to HALIE.

LANDING RWY 4R/13C: From HALIE on track 278° to OLCYK, then on track 279° to TINLY, then on track 278° to CTLER, then on track 278°. Expect RADAR vectors to final approach course.

LANDING RWY 22L: From HALIE on track 343° to cross GERMN at or above 4000, then on track 343° to LNAME, then on track 343° to cross STER at or above 3000. Expect RNAV (GPS) approach or RADAR vectors to final approach course. If approach clearance not received by STER, proceed inbound on RNAV (GPS) Z Rwy 22L routing.

LANDING RWY 31C: From HALIE on track 295° to cross HAADN at 6000, then on track 295° to cross HILLS at 5000. Expect RNAV (RNP) approach or RADAR vectors to final approach course.

CHICAGO MIDWAY INTL (MDW)
CHICAGO, ILLINOISPANGG THREE ARRIVAL (RNAV)
(PANGG:PANGG3) 18088CHICAGO MIDWAY INTL (MDW)
CHICAGO, ILLINOIS

