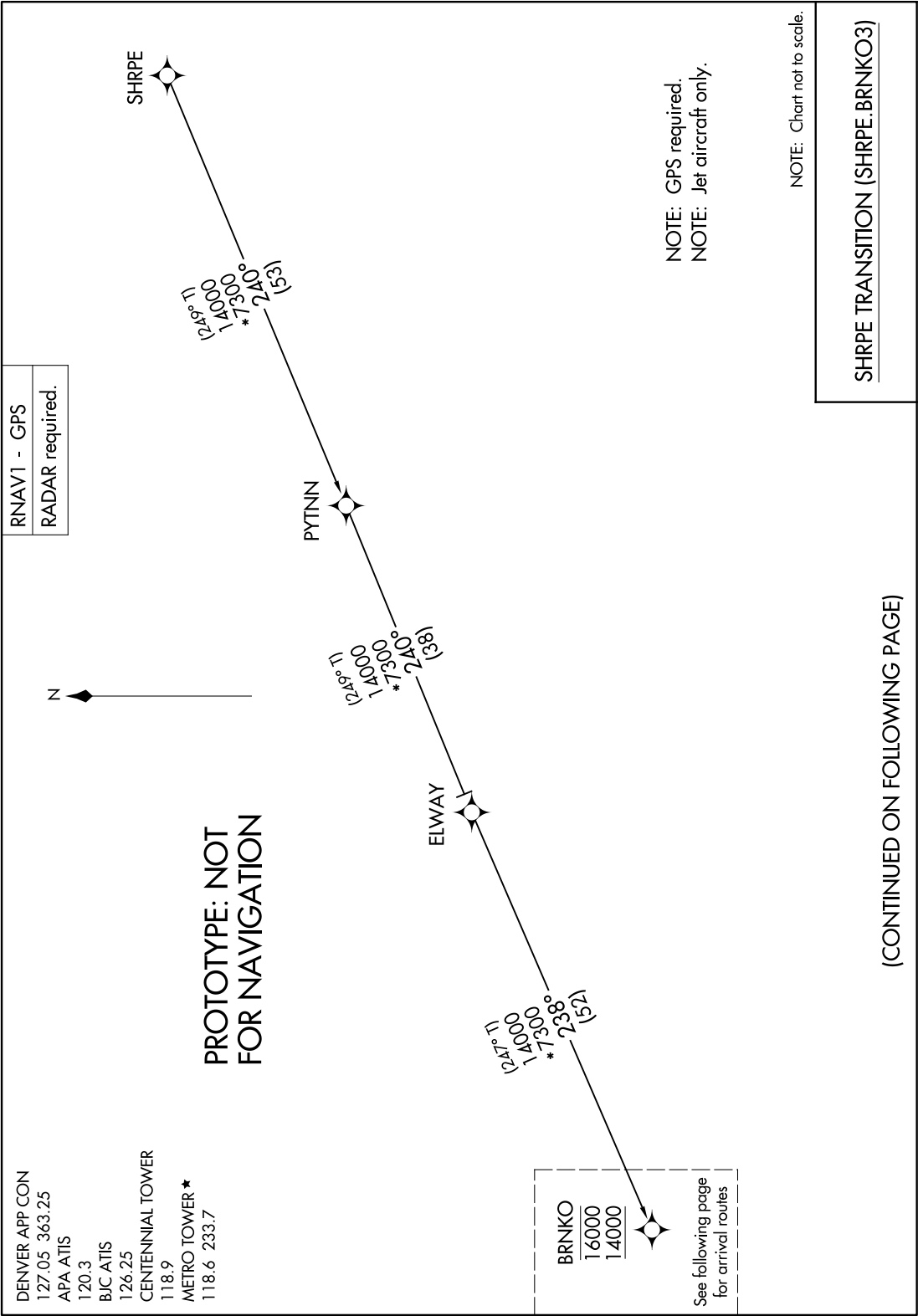


Flight Procedures Cover Page	Task Action: FLIGHT CHECK	Task Type: STAR	Estimated Chart Date: 03/21/2024	APWS Task ID: 2F5BE22211C944A5AA63A160F6B39C33	APWS Project ID: 8498B21793CB401DB7F12CBF116A22CA
Procedure: STAR BRNKO THREE (RNAV) DENVER, CO KDEN		Enroute: YES	Specialist: Copeland, Guy		Agreement Number:
Airport ID: KAPA			Airport City: DENVER		State: CO
Facility ID:	Facility Type:	Flight Inspection Remark Type: New FC Slot			
<div>Procedure Comments: CONTACT: ROBERT HAMILTON 405-954-4608 FLIGHT INSPECTION FOR MEA VALUE ONLY</div> <div><div>11/14/2023</div><div>QUALITY 14 CHECKED</div><div>QUALITY 41 CHECKED</div></div>					

FIPC DME/DME FORM							
PROCEDURE: STAR BRNKO THREE (RNAV) DENVER, CO KDEN			AIRPORT NAME: CENTENNIAL		AIRPORT ID: KAPA	SPECIAL CONTROL NO: SG-12-004-23	
FAC ID: BRNKO3		CITY: DENVER			ST: CO	ORIG CHART DATE: 03/21/2024	
DFL TYPE: PROC/D	THIRD PARTY: <input type="checkbox"/> YES	EST. TIME ON SITE: 1.0	REIMB. NUMBER:		PTS TASK ID: 2F5BE22211C944A5AA63A160F6B39C33		
PREFLIGHT NOTES							
REVIEWER: matthew olstad					DATE: 01/25/2024		
COMMENTS:					CHECK ONE:		
					<input checked="" type="checkbox"/> FLT CK REQ <input type="checkbox"/> NFCR <input type="checkbox"/> REJECT		
							YES
					CPV COMPLETE?		X
PROCEDURE RESULTS							
INSPECTION DATE: 01/24/2024		CREW #: VN427	N #: N89	INSTRUMENT PROCEDURE STATUS: <input checked="" type="checkbox"/> SAT <input type="checkbox"/> SAT W/CHANGES <input type="checkbox"/> UNSAT		ARINC CODING: <input checked="" type="checkbox"/> SAT <input type="checkbox"/> SAT/GOLD <input type="checkbox"/> UNSAT	
FLIGHT INSPECTOR SIGNATURE: matthew olstad @ 01/25/2024 08:25			PRINTED NAME: OLSTAD, MATTHEW WILLIAM			NOTAM INITIATED? <input type="checkbox"/> YES <input checked="" type="checkbox"/> NO	
FLIGHT INSPECTOR REMARKS:							
DME/DME STATUS: <input type="checkbox"/> SAT <input type="checkbox"/> UNSAT		SPECIALIST SIGNATURE:			PRINTED NAME:		
SPECIALIST REMARKS:							
IN-FLIGHT OBSTACLE REPORT							
OBSTRUCTION ID #:	COORDINATES OR LOCATION:		GNSS ALTITUDE (MSL):		BAROMETRIC ALTITUDE (MSL):		HEIGHT ABOVE GROUND LEVEL:



AUTOMATED AL-5715 BRNKO ARRIVAL

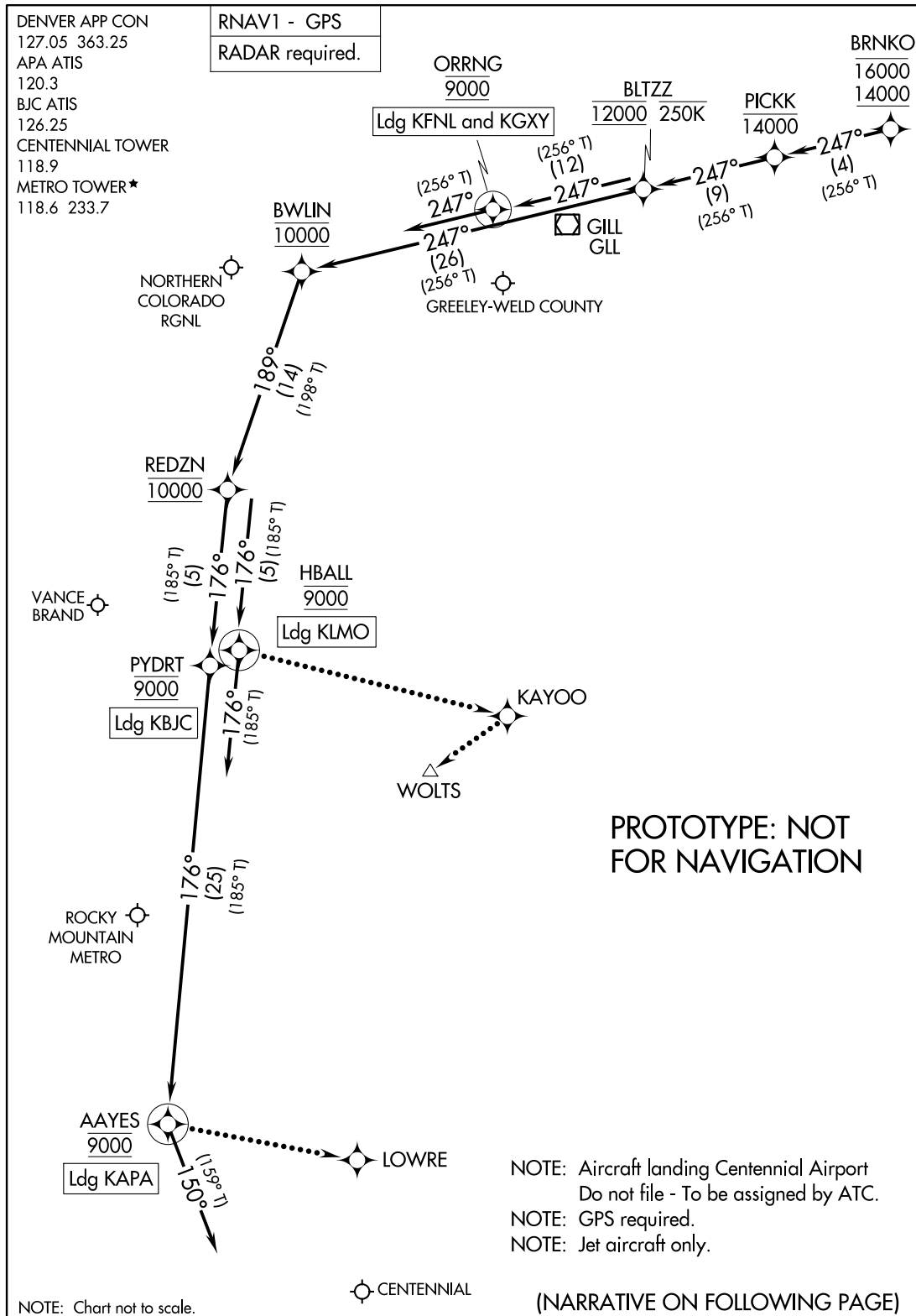
SW-1
20 NOV 2023
COMPILER: CG
REVIEWER:
DBL CHKR:
EFF: FIG

(BRNKO.BRNKO3) FIG

AL-5715 (FAA)

BRNKO THREE ARRIVAL (RNAV) Arrival Routes

DENVER, COLORADO



AUTOMATED AL-5715 BRNKO ARRIVAL (CONT)

SW-1

17 NOV 2023

COMPILER: CG

REVIEWER:

DBL CHKR:

EFF: FIG

BRNKO THREE ARRIVAL (RNAV) Arrival Routes

DENVER, COLORADO

(BRNKO.BRNKO3) FIG

ARRIVAL ROUTE DESCRIPTION

LANDING KAPA: From BRNKO on track 247° to cross PICKK at or below 14000, then on track 247° to cross BLTZZ at 12000 and at or below 250K, then on track 247° to cross BWLIN at 10000, then on track 189° to cross REDZN at 10000, then on track 176° to cross PYDRT at 9000, then on track 176° to cross AAYES at 9000, then on track 150°. Expect RADAR vectors to final approach course.

LANDING KBJC: From BRNKO on track 247° to cross PICKK at or below 14000, then on track 247° to cross BLTZZ at 12000 and at or below 250K, then on track 247° to cross BWLIN at 10000, then on track 189° to cross REDZN at 10000, then on track 176° to cross PYDRT at 9000. Expect RNAV (GPS) RWY 12L approach or visual approach as assigned by ATC.

LANDING KFNL/KGXY: From BRNKO on track 247° to cross PICKK at or below 14000, then on track 247° to cross BLTZZ at 12000 and at or below 250K, then on track 247° to cross ORRNG at 9000, then on track 247°. Expect RADAR vectors to final approach course.

LANDING KLMO: From BRNKO on track 247° to cross PICKK at or below 14000, then on track 247° to cross BLTZZ at 12000 and at or below 250K, then on track 247° to cross BWLIN at 10000, then on track 189° to cross REDZN at 10000, then on track 176° to cross HBALL at 9000, then on track 176°. Expect RADAR vectors to final approach course.

LOST COMMUNICATIONS

LANDING KAPA: From AAYES direct LOWRE and execute RNAV (GPS) RWY 17L approach.

LANDING KBJC: From PYDRT execute RNAV (GPS) RWY 12L approach.

LANDING KLMO: From HBALL direct KAYOO direct WOLTS and execute RNAV (GPS) RWY 29 approach.

LANDING KFNL/KGXY: Proceed to GLL VOR/DME, execute approach.

PROTOTYPE: NOT
FOR NAVIGATION

AUTOMATED AL-5715 BRNKO ARRIVAL (CONT 2)

SW-1

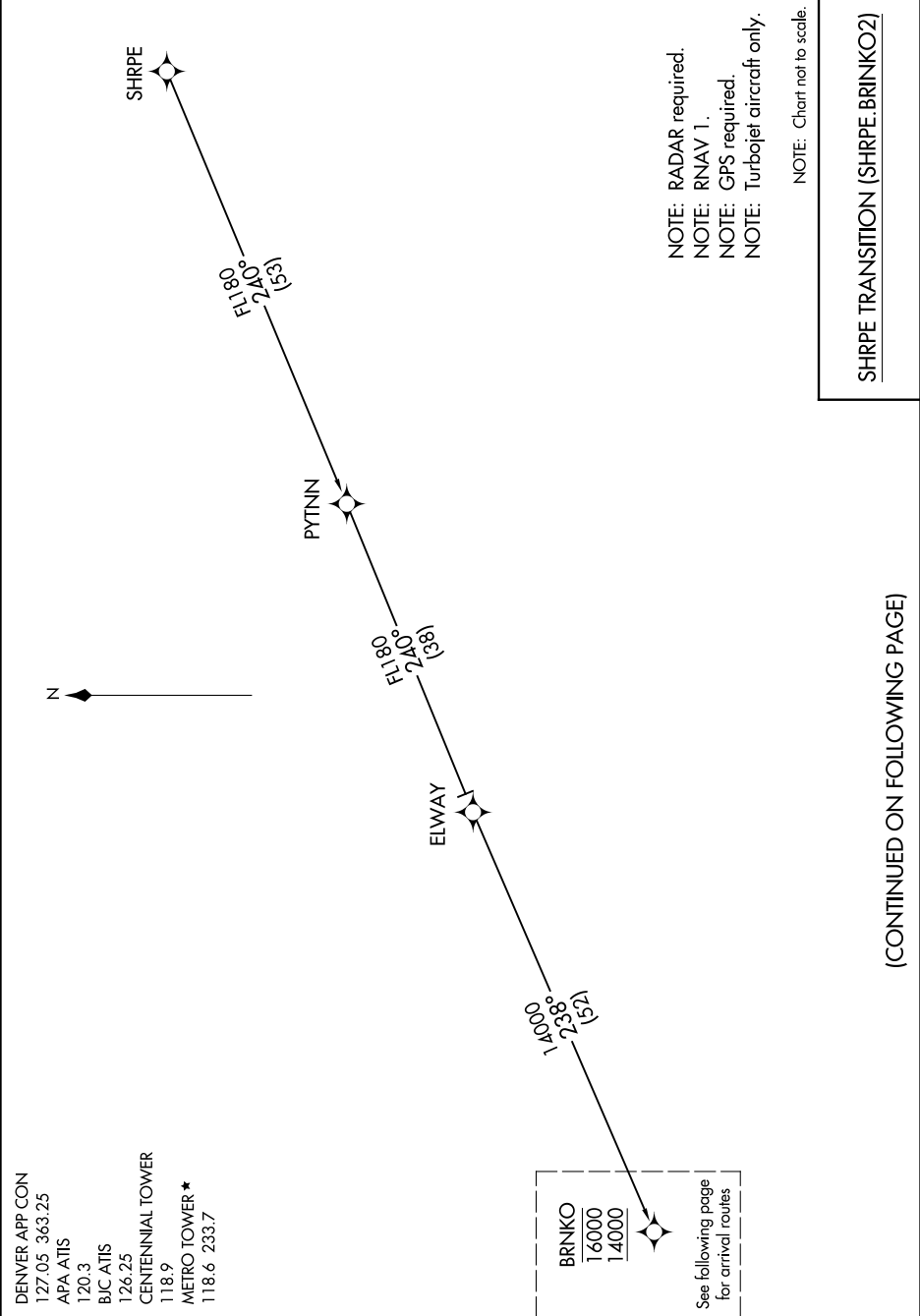
20 NOV 2023

COMPILER: CG

REVIEWER:

DBL CHKR:

EFF: FIG



BRNKO TWO ARRIVAL(RNAV) Arrival Routes

DENVER, COLORADO

DENVER APP CON
127.05 363.25
APA ATIS
120.3
BJC ATIS
126.25
CENTENNIAL TOWER
118.9
METRO TOWER*
118.6 233.7

BRNKO
16000
14000

ORRNG
9000
Ldg KFNL and KGXY

BLTZZ
12000 250K

PICKK
14000

BWLIN
10000

NORTHERN
COLORADO
RGNL

GREELEY-WELD COUNTY

REDZN
10000

VANCE
BRAND

HBALL
9000

Ldg KLMO

PYDRT
9000

Ldg KBJC

ROCKY
MOUNTAIN
METROPOLITAN

AAYES
9000

Ldg KAPA

NOTE: RADAR required.
NOTE: RNAV 1.
NOTE: GPS required.
NOTE: Turbojet aircraft only.

NOTE: Chart not to scale.

CENTENNIAL

(NARRATIVE ON FOLLOWING PAGE)

BRNKO TWO ARRIVAL(RNAV) Arrival Routes

DENVER, COLORADO

ARRIVAL ROUTE DESCRIPTION

LANDING KAPA: From BRNKO on track 247° to cross PICKK at or below 14000, then on track 247° to cross BLTZZ at 12000 and at or below 250K, then on track 247° to cross BWLIN at 10000, then on track 189° to cross REDZN at 10000, then on track 176° to cross PYDRT at 9000, then on track 176° to cross AAYES at 9000, then on track 150°. Expect RADAR vectors to final approach course.

LANDING KBJC: From BRNKO on track 247° to cross PICKK at or below 14000, then on track 247° to cross BLTZZ at 12000 and at or below 250K, then on track 247° to cross BWLIN at 10000, then on track 189° to cross REDZN at 10000, then on track 176° to cross PYDRT at 9000. Expect RNAV (GPS) RWY 12L approach or visual approach as assigned by ATC.

LANDING KFNL/KGXY: From BRNKO on track 247° to cross PICKK at or below 14000, then on track 247° to cross BLTZZ at 12000 and at or below 250K, then on track 247° to cross ORRNG at 9000, then on track 247°. Expect RADAR vectors to final approach course.

LANDING KLMO: From BRNKO on track 247° to cross PICKK at or below 14000, then on track 247° to cross BLTZZ at 12000 and at or below 250K, then on track 247° to cross BWLIN at 10000, then on track 189° to cross REDZN at 10000, then on track 176° to cross HBALL at 9000, then on track 176°. Expect RADAR vectors to final approach course.

LOST COMMUNICATIONS

LANDING KAPA: From AAYES direct LOWRE and execute RNAV (GPS) RWY 17L approach.

LANDING KBJC: From PYDRT execute RNAV (GPS) RWY 12L approach.

LANDING KLMO: From HBALL direct KAYOO direct WOLTS and execute RNAV (GPS) RWY 29 approach.

LANDING KFNL/KGXY: Proceed to GLL VOR/DME, execute approach.

