


Flight Procedure Tracking Form		Action: AMENDMENT	Task Type: IAP	Date Open: 10/01/2019	Task #: 2019100128112801001	Request #: 20191001281128
Procedure: ILS OR LOC RWY 18 AMDT 1D			Airport ID: KOKM	Airport: OKMULGEE RGNL		Reimbursable #: NO
City: OKMULGEE	ST: OK	GPS #:	Estimated Chart Date: 03/26/2020		FICO #:	
Fac ID: OKM		Fac. Type: ILS		Specialist: RUSSELL ROSLEWSKI		
Procedure Review						
	Rec'd	Rel'd	Full Name	Comments		
Lead:	10/01/2019			 Digitally signed by JON DENTON Jan 29, 2020		
QA:						
Liaison:						
Procedure Comments: ENROUTE-NON Remark Type: INFORMATION						
P-NOTAM NEW CIRCLING AREAS BASED ON EXISTING PROCEDURE AT AIRPORT. PROCESSED IAW AIRCRAFT OPERATIONS GROUP (AJW-33) MEMO, OCTOBER 3, 2018, SUBJECT: FLIGHT INSPECTION REVIEW NOT REQUIRED. DAVE DANNER, 405-954-5077						

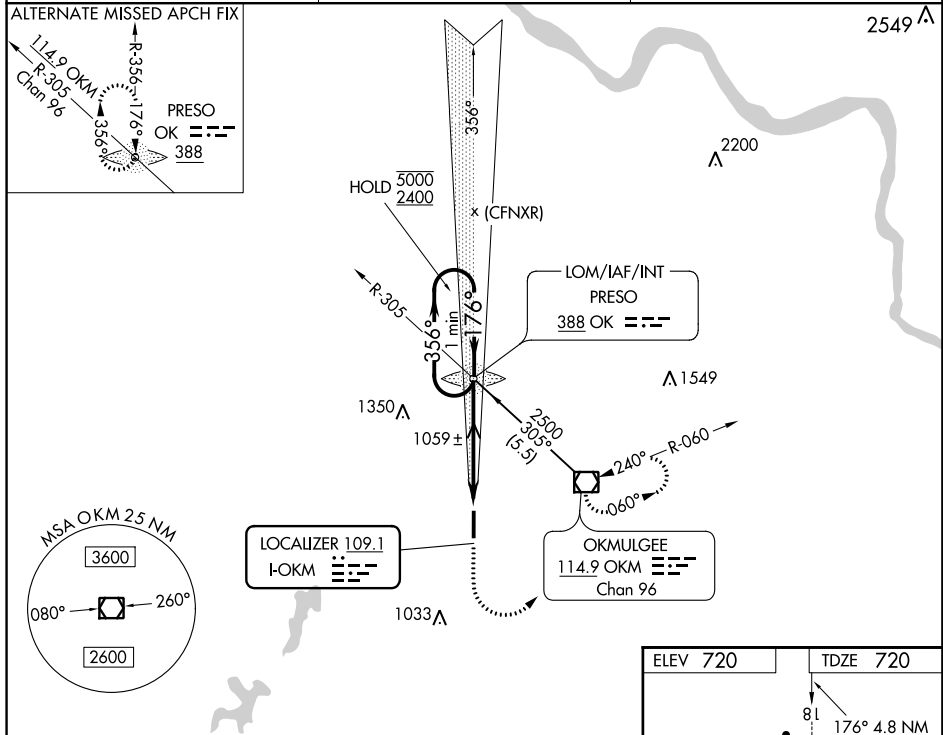
QUALITY
 26
 CHECKED

LOC I-OKM 109.1	APP CRS 176°	Rwy Idg TDZE Apt Elev	5150 720 720
---------------------------	------------------------	-----------------------------	---

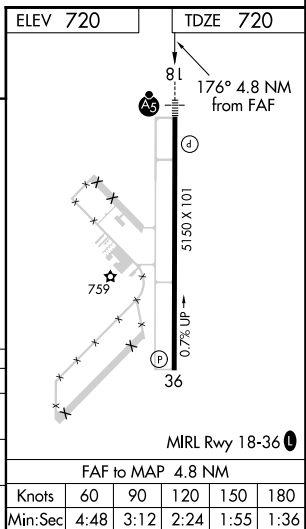
ILS or LOC RWY 18
OKMULGEE RGNL (OKM)

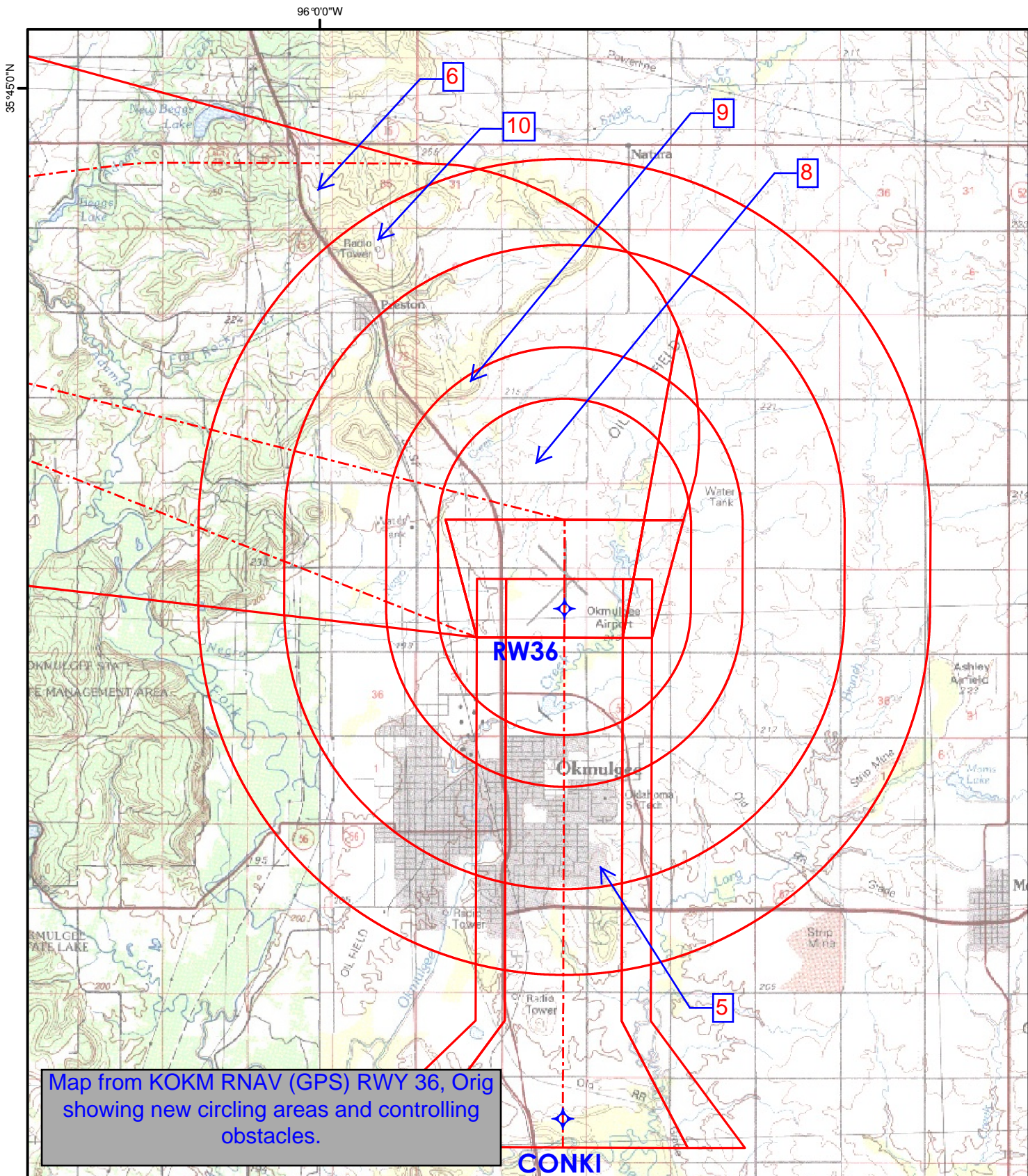
 NA	 MALSR	MISSED APPROACH: Climb to 2100 then climbing left turn to 2600 direct OKM VOR/DME and hold.
--------	-----------	---

AWOS-3 118.225	TULSA APP CON 119.85 338.3	UNICOM 123.0 (CTAF)
--------------------------	--------------------------------------	-------------------------------



2100	2600	OKM		
PRESO LOM/INT				
One Minute Holding Pattern				
GS 3.00° TCH 51				
4.8 NM				
CATEGORY	A	B	C	D
S-ILS 18	920-½ 200 (200-½)			NA
S-LOC 18	1320-½ 600 (600-½)		1320-1¼ 600 (600-1¼)	NA
CIRCLING	1320-1 600 (600-1)		1320-1½ 600 (600-1½)	NA





Airport ID	KOKM	No	SEGMENT	OBSTRUCTION	ELEV
Airport Name	Okmulgee Rgnl	5	Final LNAV	Tank (40-051569)	916
City	Okmulgee	6	Missed Approach	Tower (40-002255)	1350
State	Oklahoma	8	Circling CAT A	Tree	840
Procedure ID	RNAV (GPS) RWY 36	9	Circling CAT B-C	Tree	1040
Amendment #	Orig	10	Circling CAT D	Tower (40-001444)	1334
Map Scale	1:100,000				

KOKM_CHANEY
Transverse Mercator
Scale 1:100000