

Flight Procedures Cover Page	Task Action: P-NOTAM	Task Type: IAP	Estimated Chart Date: 11/04/2021	APWS Task ID: 2EACA75D8EB84F60B6F1AB3CE33A42ED	APWS Project ID: F81A8FFC3D3B4B61B944FB561DE3A7B2
Procedure: RNAV (GPS) RWY 13 AMDT 0B		Enroute: NO	Specialist: Moore, Frank		Agreement Number:
Airport ID: KCKN			Airport City: CROOKSTON		State: MN
Facility ID:	Facility Type:	Flight Inspection Remark Type:			
<p>Procedure Comments: P-NOTAM This Cancels FDC 0/7821 Order 8260.3, chapter 2, New Circling Criteria Applied.</p> <p>CONTACT DAVE TEFFETELLER 202-267-5177</p>					



WAAS CH 72704 W13A	APP CRS 128°	Rwy Idg TDZE 896 Apt Elev 900
--	------------------------	---

OLD

RNAV (GPS) RWY 13

CROOKSTON MUNI-KIRKWOOD FIELD (CKN)

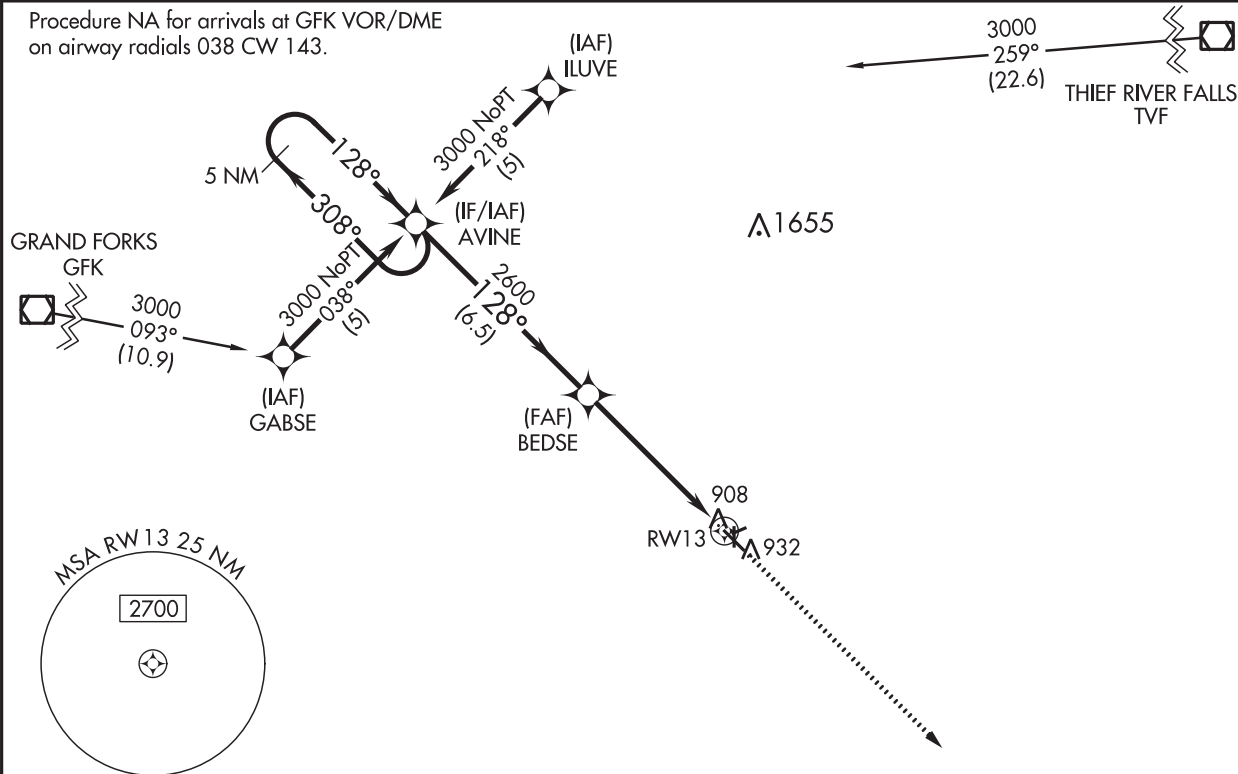
RNP APCH.

⚠ Baro-VNAV NA when using Grand Forks altimeter setting. For uncompensated Baro-VNAV systems, LNAV/VNAV NA below -16°C (4°F) or above 54°C (130°F). If local altimeter setting not received, use Grand Forks altimeter setting and increase all DAs 62 feet and all MDAs 80 feet. Circling Rwy 6, 24, 17, 35 NA at night.

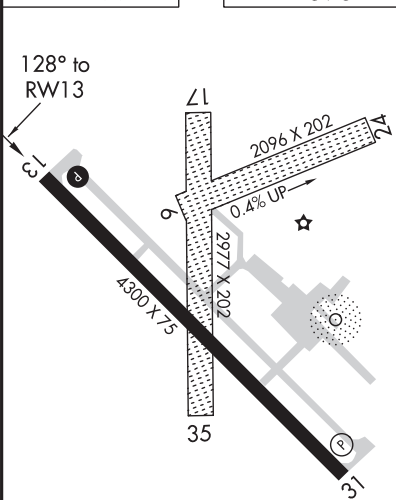
MISSED APPROACH: Climb to 3000 direct FAPVU and hold.

AWOS-3 126.425	GRAND FORKS APP CON 118.1 318.1	CLNC DEL 118.15	UNICOM 122.7 (CTAF) 1
--------------------------	---	---------------------------	---------------------------------

Procedure NA for arrivals at GFK VOR/DME on airway radials 038 CW 143.

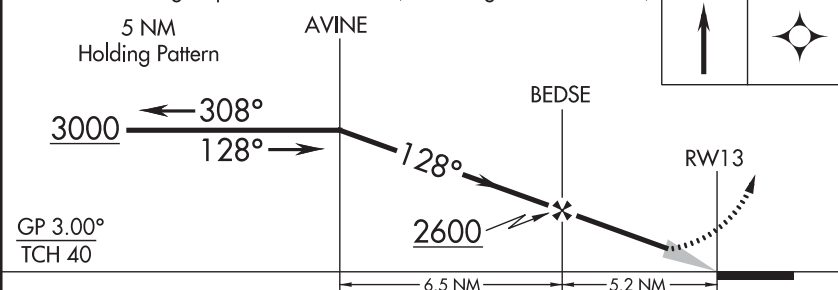


ELEV 900 TDZE 896



REIL Rwy 13 and 31 **1**
MIRL Rwy 13-31 **1**

VGSI and RNAV glidepath not coincident (VGSI Angle 3.00/TCH 30).



CATEGORY	A	B	C	D
LPV DA	1146-1	250 (300-1)		NA
LNAV/VNAV DA	1210-1	314 (400-1)		NA
LNAV MDA	1360-1	464 (500-1)	1360-1¼ 464 (500-1¼)	NA
CIRCLING	1360-1	460 (500-1)	1360-1½ 460 (500-1½)	NA

CROOKSTON MUNI - KIRKWOOD FIELD (CKN)
CROOKSTON, MN
RNAV GPS RWY 13, ORIG-B
CIRCLING 1:100,000

