

Flight Procedures Cover Page	Task Action: FLIGHT CHECK	Task Type: IAP	Estimated Chart Date: 02/25/2021	APWS Task ID: 2E7ECD99DB2D42BDBA97EBD36B232478	APWS Project ID: 508852364CA140298E14F8CE90C78392
Procedure: ILS OR LOC RWY 12 AMDT 11		Enroute: YES	Specialist: Downey, Lorri		Agreement Number:
Airport ID: KHON			Airport City: HURON		State: SD
Facility ID: HON	Facility Type: ILS	Flight Inspection Remark Type: New FC Slot			
<p>Procedure Comments: HON VOR IS SLATED FOR DECOMMISSIONING 7-16-20.</p> <p>GPS REQUIRED.</p> <p>CONTACT: WARDELL HENNING: 405-954-9954</p> <p>01/11/21: THIS IS A CORRECTED COPY OF THE FORM APPROVED ON 10/26/20. 1. CHANGED MSA FROM HO NDB TO HO LOM. 2. REMOVED CHART PROFILE NOTE: USE I-HON DME WHEN ON THE LOCALIZER COURSE - HON VORTAC DECOMMISSIONED.</p> <div style="text-align: right;"> <i>Digitally signed by</i> JON DENTON Jan 12, 2021 </div>					

QUALITY
18
CHECKED

[illegible]

OLD

HURON, SOUTH DAKOTA

AL-202 (FAA)

18200

LOC/DME I-HON 110.3 Chan 40	APP CRS 121°	Rwy Idg 7201 TDZE 1289 Apt Elev 1289
---	------------------------	---

ILS or LOC RWY 12
HURON RGNL (HON)

T For inoperative MALSR when using Mitchell altimeter setting increase S-ILS 12 all Cats visibility to 1 mile. When local altimeter setting not received, use Mitchell Muni altimeter setting and increase all DA 89 feet and all MDA 100 feet, increase S-LOC 12 Cats C and D visibility $\frac{1}{4}$ mile and Circling Cats C and D $\frac{1}{4}$ mile. VDP NA when using Mitchell altimeter setting. Circling Rwy 17, 35 NA at night.

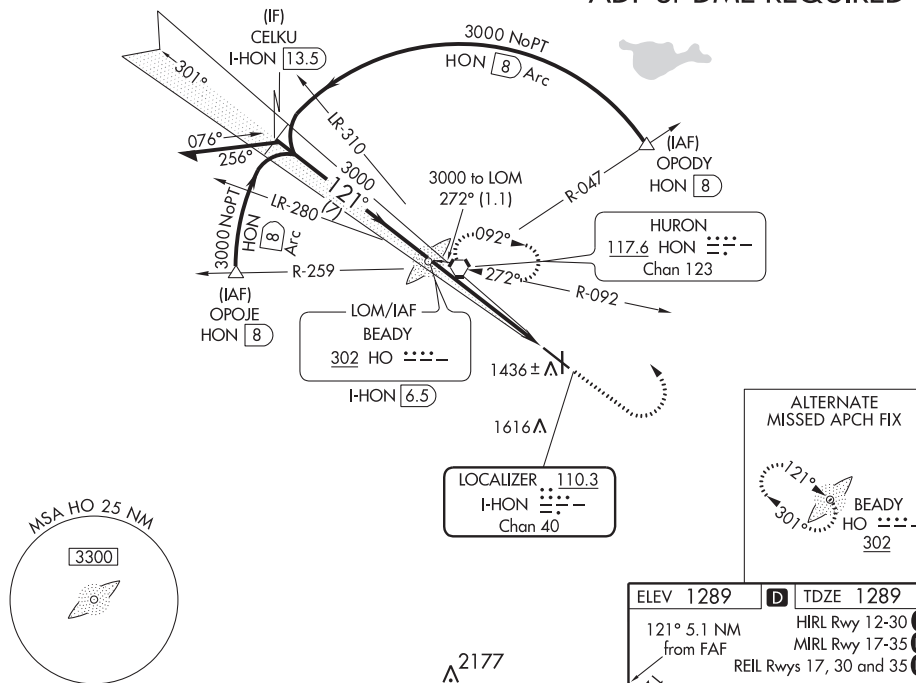
MALSR



MISSED APPROACH: Climb to 3000 then left turn direct HON VORTAC and hold.

ASOS 118.125	MINNEAPOLIS CENTER 126.25 339.8	HURON RADIO 122.2 122.6	UNICOM 123.0 (CTAF) 1
------------------------	---	-----------------------------------	--

ADF or DME REQUIRED



Use I-HON DME when on LOC course.

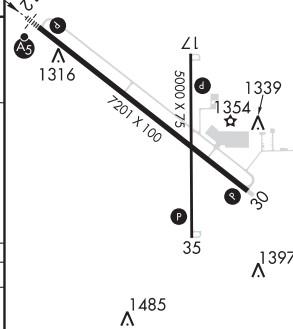
Remain within 10 NM

CATEGORY	A	B	C	D
S-ILS 12	1489- $\frac{1}{2}$ 200 (200- $\frac{1}{2}$)			
S-LOC 12	1680- $\frac{1}{2}$ 391 (400- $\frac{1}{2}$)			1680- $\frac{3}{4}$ 391 (400- $\frac{3}{4}$)
CIRCLING	1820-1 531 (600-1)	1820-1 $\frac{1}{2}$ 531 (600-1 $\frac{1}{2}$)		1980-2 $\frac{1}{4}$ 691 (700-2 $\frac{1}{4}$)

HURON, SOUTH DAKOTA
Amdt 10A 24MAY18

44°23'N-98°14'W

ELEV 1289	D	TDZE 1289
121° 5.1 NM from FAF		HIRL Rwy 12-30 MIRL Rwy 17-35 REIL Rwy 17, 30 and 35



FAF to MAP 5.1 NM					
Knots	60	90	120	150	180
Min:Sec	5:06	3:24	2:33	2:02	1:42

HURON RGNL (HON)
ILS or LOC RWY 12

NC-1, 02 JAN 2020 to 30 JAN 2020

LOC/DME I-HON 110.3 Chan 40	APP CRS 121°	Rwy Idg TDZE 1289 Apt Elev 1289
---	------------------------	---

ILS or LOC RWY 12

HURON RGNL (HON)

RNAV-1 GPS or RADAR required for procedure entry. ADF required.
From HUMSO and WEDEM: RNAV-1 GPS required.

MALSR



MISSED APPROACH: Climb to 3000 then left turn direct BEADY LOM and hold.



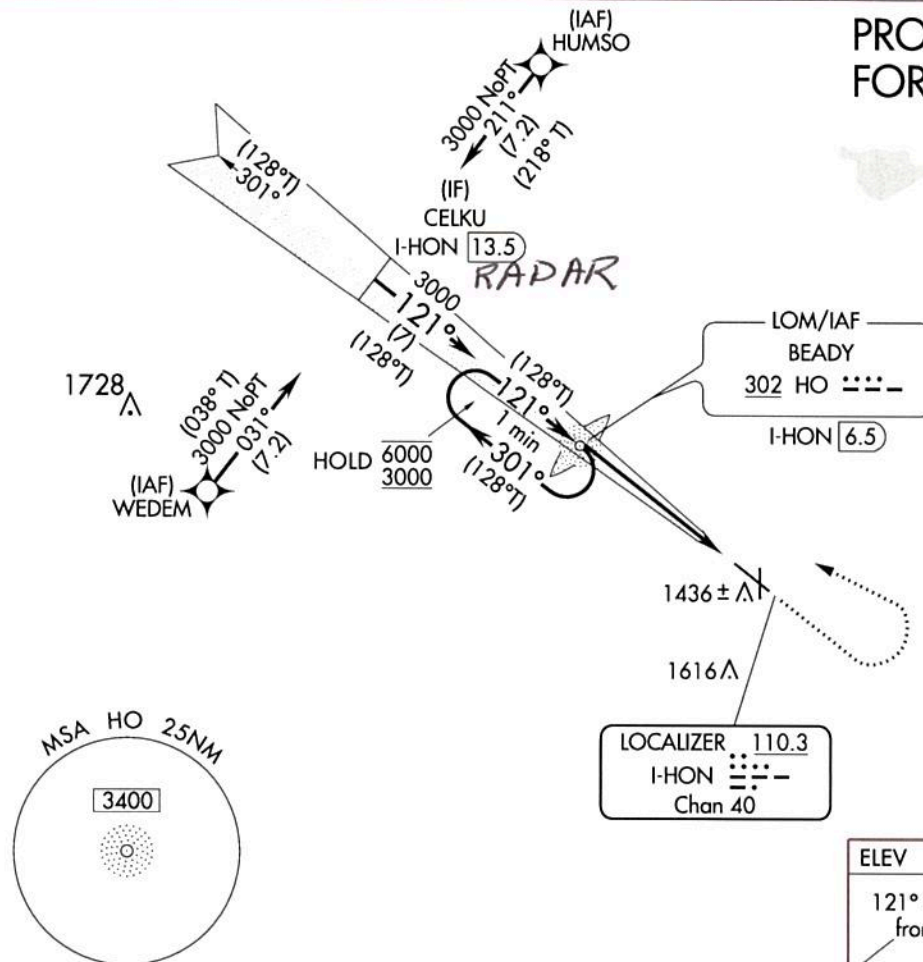
Circling Rwy 18, 36 NA at night. For inop ALS, increase S-LOC 12 Cat C/D visibility to 1 1/2 SM.

ASOS
118.125

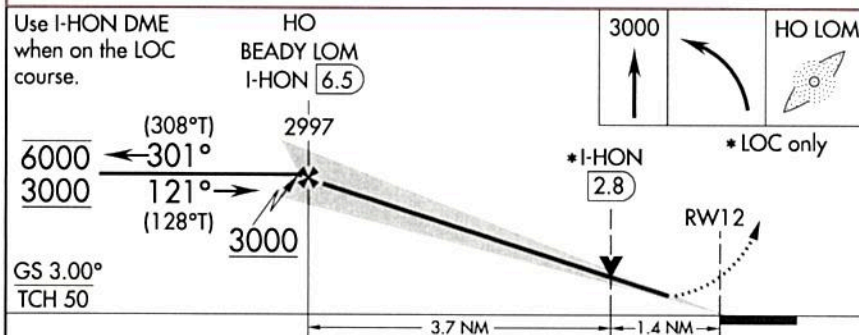
MINNEAPOLIS CENTER
126.25 339.8

UNICOM
123.0 (CTAF) 0

PROTOTYPE: NOT
FOR NAVIGATION



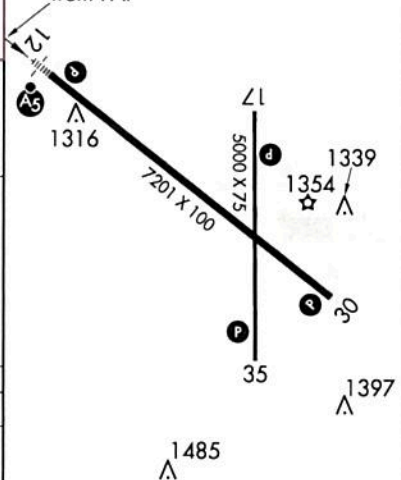
Use I-HON DME
when on the LOC
course.



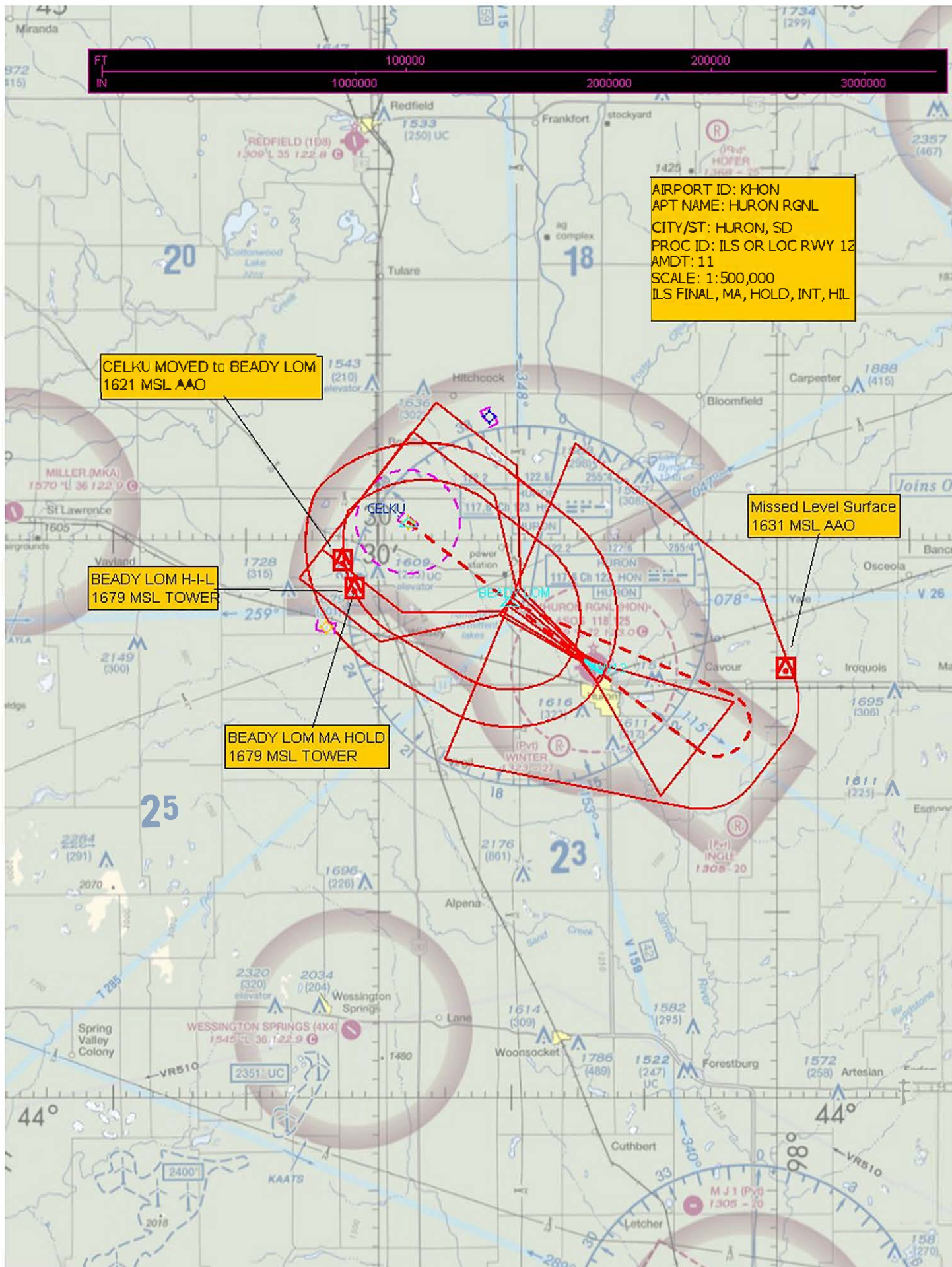
CATEGORY	A	B	C	D
S-ILS 12	1489-1/2 200 (200-1/2)			
S-LOC 12	1780-1/2	491 (500-1/2)	1780-1	491 (500-1)
CIRCLING	1820-1	531 (600-1)	1920-1 3/4	1980-2 1/4
			631 (700-1 3/4)	691 (700-2 1/4)

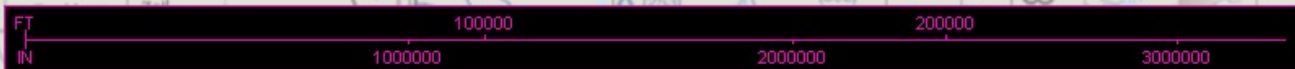
ELEV 1289 **D** TDZE 1289

121° 5.1 NM
from FAF



HIRL Rwy 12-30 **0**
MIRL Rwy 17-35 **0**
REIL Rws 17, 30 and 35 **0**





AIRPORT ID: KHON
APT NAME: HURON RGNL
CITY/ST: HURON, SD
PROC ID: ILS OR LOC RWY 12
AMDT: 11
SCALE: 1:500,000
LOC FINAL, MA, HOLD, INT, HIL

CELKU to BEADY: OUTER_MARKER
1621 MSL AAO

BEADY LOM MA HOLDING
1679 MSL TOWER

BEADY LOM H-I-L
1679 MSL TOWER

LOC: BEADY: OUTER_MARKER to KHON: RW12
1520 MSL AAO

MISSED LEVEL SURFACE
1616 MSL TOWER

