

DME DME Assessment Results for OHSEA3 path RDHOT_KLEVR

Results Summary

Flyability:	Completed
DME/DME:	Completed - No Critical DMEs
Name:	Bob CTR Graham
Project File:	C:\Users\Bob CTR Graham\Desktop\AREA NAV Projects and TARGETS Files\LAX\12-26-24_SOCAL_FINAL_PKGS\OHSEA3 STAR\20240502_OHSEA.tgs
Output File:	C:\Users\Bob CTR Graham\Desktop\AREA NAV Projects and TARGETS Files\LAX\12-26-24_SOCAL_FINAL_PKGS\OHSEA3 STAR\FINAL DOCS\KSNA [IFPA] OHSEA3 20240502_1707 MST\RDHOT_KLEVR\KSNA OHSEA3 RNAV STAR RDHOT KLEVR 20240502_1707 MST.pdf
Procedure Name:	OHSEA3
Software: DmeDmePlugin:	7.2.1
Date/Time:	05/02/2024 17:07 MST
Databases:	MITRE 3DEP 3 arcsec

Failures

No Failures

Warnings

No Warnings

Informational

No Informational

Notes For Flight Check

TACANS USED: NTD 110.60.

Flight Plan

Name	Type	Lat/Lon	Altitude (ft)	VNAV Mode	Ground Speed (kts)	Turn Type	Leg Type
RDHOT	WP	N35° 35' 33.3100", W120° 21' 36.4300"	11000	VNAV	280	FLY_BY	TF
ELLBC	WP	N35° 03' 48.2800", W119° 50' 01.1600"	11000	VNAV	280	FLY_BY	TF
GOONA	WP	N34° 38' 02.2600", W119° 19' 03.8500"	11000	VNAV	280	FLY_BY	TF
GUDBY	WP	N34° 30' 20.4900", W119° 09' 49.5600"	11000	VNAV	280	FLY_BY	TF
YORBS	WP	N34° 24' 07.7100", W119° 02' 35.6500"	11000	VNAV	280	FLY_BY	TF
PCIFC	WP	N34° 13' 45.1500", W118° 50' 45.5900"	11000	VNAV	280	FLY_BY	TF
CRAYN	WP	N34° 04' 41.0500", W118° 47' 10.1500"	17000	VNAV	280	FLY_BY	TF
SIPPP	WP	N33° 54' 32.5800", W118° 43' 14.6000"	14000	VNAV	280	FLY_BY	TF
TANDY	WP	N33° 44' 47.6700", W118° 39' 29.0600"	13000	VNAV	280	FLY_BY	TF
OHSEA_	WP	N33° 35' 47.2400", W118° 38' 20.1300"	5000	VNAV	280	FLY_BY	TF
STYFF	WP	N33° 31' 18.0000", W118° 27' 56.4000"	9000	VNAV	280	FLY_BY	TF
KAYNN	WP	N33° 31' 05.6000", W118° 19' 55.3000"	7000	VNAV	280	FLY_BY	TF
LAXBB	WP	N33° 34' 03.0000", W118° 10' 40.8000"	5000	VNAV	200	FLY_BY	TF
KLEVR	WP	N33° 41' 47.6970", W117° 56' 45.7380"	5000	VNAV	200	FLY_OVER	TF

DME DME Assessment Results for OHSEA3 path RDHOT_KLEVR

Flyability	
Flight Type:	RNAV_STAR
Selected Airport:	KSNA [IFPA]
Climb Gradient:	None assigned
Speeds:	200 Ground Speed to 11000 FT
	240 Ground Speed to 18000 FT
	260 Ground Speed to 24000 FT
	340 Ground Speed above 24000 FT
Descent During a Turn:	Allowed
VNAV Mode:	Flight Plan

DME/DME	
RNP:	RNP 2
Flight Mode:	Manual
Line of Sight (DTED Level 0 Max):	Evaluated
Inertial Drift:	Enabled
Initial Drift:	0.558 NM
INS Drift Rate:	8.0 NM/Hour
Range Mode:	OSV
RNP Edges:	Evaluated
Min DME Range:	3.0 NM
DME Types:	DME, VOR-DME, VORTAC, TACAN
DME Include Angles:	30 to 150
Critical DMEs:	Allowed
DoD Facilities:	Included
Foreign Facilities:	Not included
High DMEs:	Included
Low DMEs:	Included
Terminal DMEs:	Included
Flight Check DMEs:	Not selected
Higher Altitudes:	Not Evaluated
Near Maximum Altitude:	Not Evaluated
Automatic ESVs:	Not enabled
Disabled DMEs:	None

DME DME Assessment Results for OHSEA3 path RDHOT_KLEVR

DME/DME (Continued)										
DMEs Used										
#	Name	Lat/Lon	MAGVAR	Range	Type	Source	Critical	Status	Time	Distance
1	FLW	N35° 05' 35.1040", W119° 51' 56.0830"	16.0 E	40	L	IFPA	NO	Enabled	36.9 %	38 %
2	EHF	N35° 29' 04.3957", W119° 05' 50.2571"	14.0 E	130	H	IFPA	NO	Enabled	2.9 %	3 %
3	FIM	N34° 21' 24.0970", W118° 52' 52.6480"	15.0 E	40	L	IFPA	NO	Enabled	24.7 %	25.5 %
4	POM	N34° 04' 42.1962", W117° 47' 13.4633"	15.0 E	40	L	IFPA	NO	Enabled	10.9 %	8.3 %
5	RZS	N34° 30' 34.3151", W119° 46' 15.5573"	14.0 E	130	H	IFPA	NO	Enabled	25.8 %	26.5 %
6	VTU	N34° 06' 53.7239", W119° 02' 56.9994"	15.0 E	40	L	IFPA	NO	Enabled	40.5 %	41.7 %
7	SMO	N34° 00' 37.5301", W118° 27' 22.9701"	15.0 E	40	L	IFPA	NO	Enabled	39.2 %	37.5 %
8	GMN	N34° 48' 14.5030", W118° 51' 40.8970"	16.0 E	40	L	IFPA	NO	Enabled	13 %	13.4 %
9	NTD	N34° 07' 23.8299", W119° 07' 19.1248"	12.0 E	40	L	IFPA	NO	Enabled	39.8 %	41 %
10	SXC	N33° 22' 30.2010", W118° 25' 11.6750"	15.0 E	130	H	IFPA	NO	Enabled	21.1 %	18.7 %
11	CMA	N34° 12' 45.0757", W119° 05' 39.6787"	15.0 E	40	L	IFPA	NO	Enabled	10.2 %	10.6 %
12	AVE	N35° 38' 49.1120", W119° 58' 42.9800"	16.0 E	130	DH	IFPA	NO	Enabled	54.1 %	55.7 %
13	PDZ	N33° 55' 06.0128", W117° 31' 47.9897"	15.0 E	130	H	IFPA	NO	Enabled	1.9 %	2 %
14	PRB	N35° 40' 20.8655", W120° 37' 37.5872"	16.0 E	40	L	IFPA	NO	Enabled	13.6 %	14 %
15	MQO	N35° 15' 08.1183", W120° 45' 34.4394"	16.0 E	40	L	IFPA	NO	Enabled	14 %	14.4 %
16	LHS	N34° 40' 58.7040", W118° 34' 36.9770"	15.0 E	130	H	IFPA	NO	Enabled	22.2 %	22.9 %
17	ELB	N33° 40' 33.7284", W117° 43' 51.9285"	14.0 E	25	T	IFPA	NO	Enabled	10.7 %	8 %
18	LAX	N33° 55' 59.3368", W118° 25' 55.2460"	15.0 E	130	H	IFPA	NO	Enabled	43.1 %	41.4 %
19	TTE	N35° 54' 46.9842", W119° 01' 14.9144"	16.0 E	130	DH	IFPA	NO	Enabled	64.1 %	66 %
20	OCN	N33° 14' 26.2815", W117° 25' 03.7947"	15.0 E	130	H	IFPA	NO	Enabled	4.4 %	4.6 %

DME DME Assessment Results for OHSEA3 path RDHOT_KLEVR

Flight Check DME Selection						
Distance [NM]	Selected DMEs					Alternate
0.0	MQO	FLW	TTE	PRB	AVE	
26.5	FLW	TTE	MQO	AVE		
27.4	FLW	TTE	AVE			
35.3	AVE	TTE				
41.0	AVE	TTE	RZS			
41.8	FLW	TTE	AVE	RZS		
44.6	FLW	TTE	AVE			
51.2	FLW	TTE	RZS	AVE		
62.2	FLW	RZS	TTE			
62.6	FLW	RZS	TTE	AVE		
70.3	RZS	AVE	FLW	NTD	TTE	
72.5	VTU	RZS	NTD	FLW	TTE	
78.3	NTD	RZS	VTU	LHS	TTE	
86.6	VTU	LHS	NTD	RZS	GMN	FIM
88.1	NTD	RZS	VTU	LHS	GMN	
90.3	NTD	RZS	VTU	LHS		
91.4	NTD	RZS	VTU	LHS	FIM	
97.8	NTD	FIM	GMN	VTU	AVE	LHS
100.8	LAX	LHS	NTD	GMN	FIM	VTU
101.1	LAX	LHS	NTD	VTU	GMN	TTE
103.1	LAX	LHS	NTD	VTU	AVE	TTE
106.2	SMO	LHS	VTU	NTD	LAX	GMN
115.3	VTU	FIM	SMO	LHS	NTD	CMA
120.2	NTD	FIM	PDZ	VTU	SMO	EHF
122.5	SMO	FIM	NTD	EHF	VTU	LAX
123.0	SMO	FIM	NTD	VTU	LAX	TTE
136.4	SMO	VTU	NTD	FIM	LAX	
142.1	NTD	LAX	VTU	SMO	SXC	
147.8	SXC	LAX	VTU	SMO		
151.1	SXC	LAX	SMO			
154.2	SXC	LAX				
155.3						
166.2	SMO	SXC				
166.3	SMO	SXC	LAX			
166.8						
167.8	SMO	SXC				
167.9	SMO	SXC	LAX			
173.3	SMO	ELB	LAX	SXC	POM	
173.5	SXC	LAX	SMO	POM		
173.9	SMO	ELB	LAX	SXC	POM	

Inertial Drift Segments			
#	Start Location	End Location	Length [NM]
1	N33° 33' 28.4558", W118° 32' 58.2303"	N33° 31' 06.6169", W118° 20' 34.0078"	10.8909
2	N33° 31' 05.6000", W118° 19' 55.3000"	N33° 31' 28.8505", W118° 18' 42.7844"	1.0819

DME DME Assessment Results for OHSEA3 path RDHOT_KLEVR

Available DMEs by Waypoints

Waypoint Before	Waypoint After	DME List	Suggested DMEs
RDHOT	ELLBC	FLW, AVE, PRB, TTE, MQO	
ELLBC	GOONA	AVE, FLW, TTE, VTU, LHS, RZS, NTD	
GOONA	GUDBY	FLW, TTE, LHS, VTU, GMN, RZS, FIM, NTD	
GUDBY	YORBS	AVE, TTE, VTU, LHS, GMN, RZS, FIM, NTD	
YORBS	PCIFC	AVE, LAX, TTE, SMO, VTU, LHS, CMA, GMN, RZS, FIM, NTD	
PCIFC	CRAYN	LAX, EHF, TTE, PDZ, GMN, FIM, AVE, SMO, VTU, LHS, CMA, OCN, NTD	
CRAYN	SIPPP	AVE, EHF, LAX, SMO, TTE, VTU, CMA, PDZ, FIM, OCN, NTD	
SIPPP	TANDY	LAX, SMO, TTE, VTU, FIM, NTD	
TANDY	OHSEA_	LAX, SMO, VTU, FIM, NTD, SXC	
OHSEA_	STYFF	LAX, SMO, VTU, SXC	
STYFF	KAYNN	LAX, SMO, SXC	
KAYNN	LAXBB	LAX, SMO, ELB, SXC, POM	
LAXBB	KLEVR	LAX, SMO, ELB, POM, SXC	

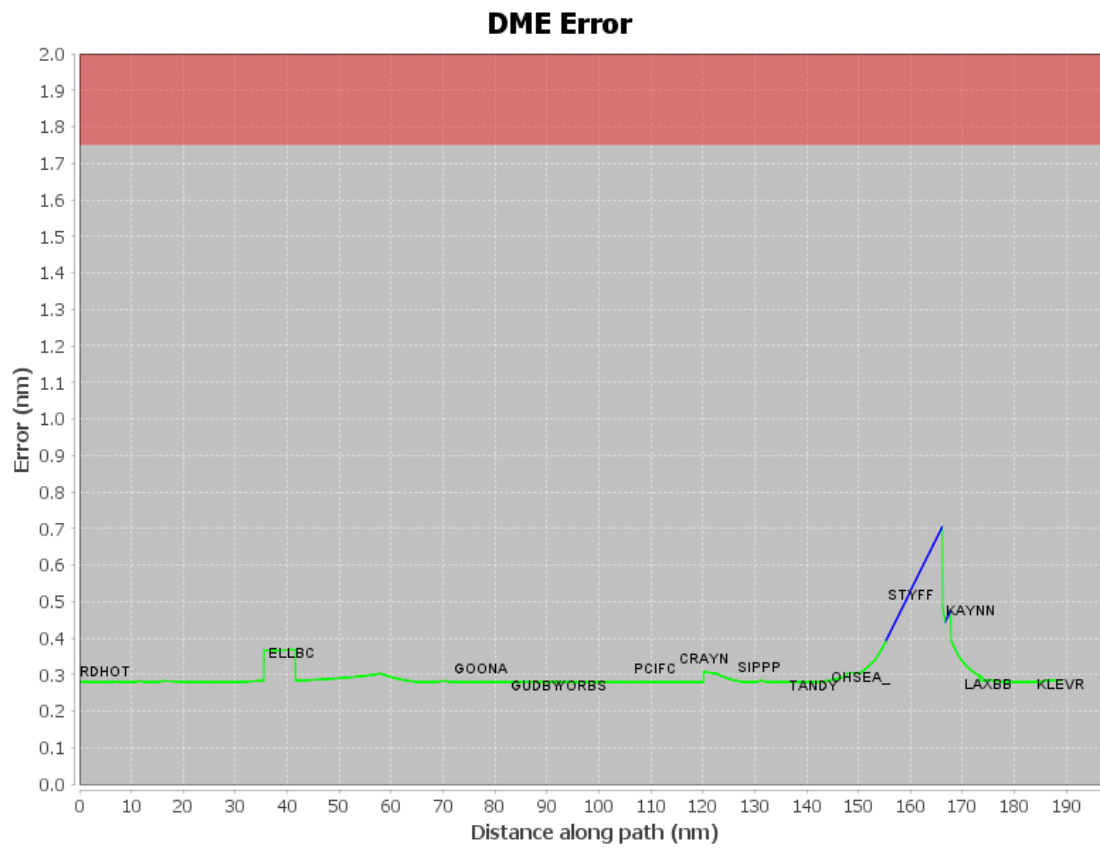
User Data Files

#	File Name
None	

User DMEs

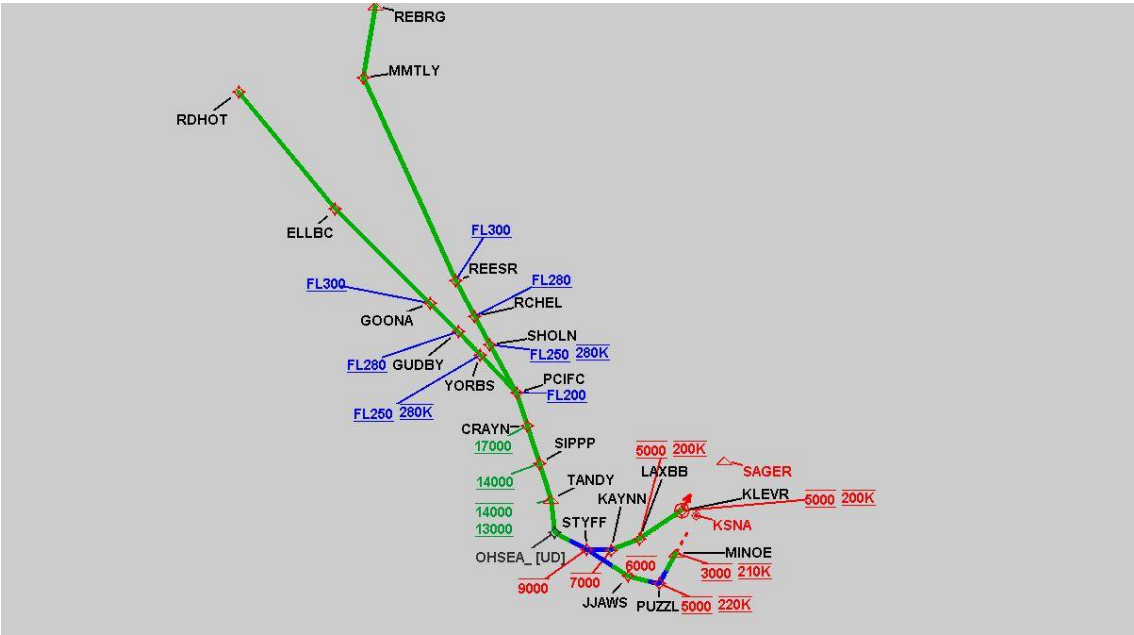
#	Name	Lat/Lon	MAGVAR	Range	Elevation [ft]	Frequency	Replaces	Status
None								

DME DME Assessment Results for OHSEA3 path RDHOT_KLEVR



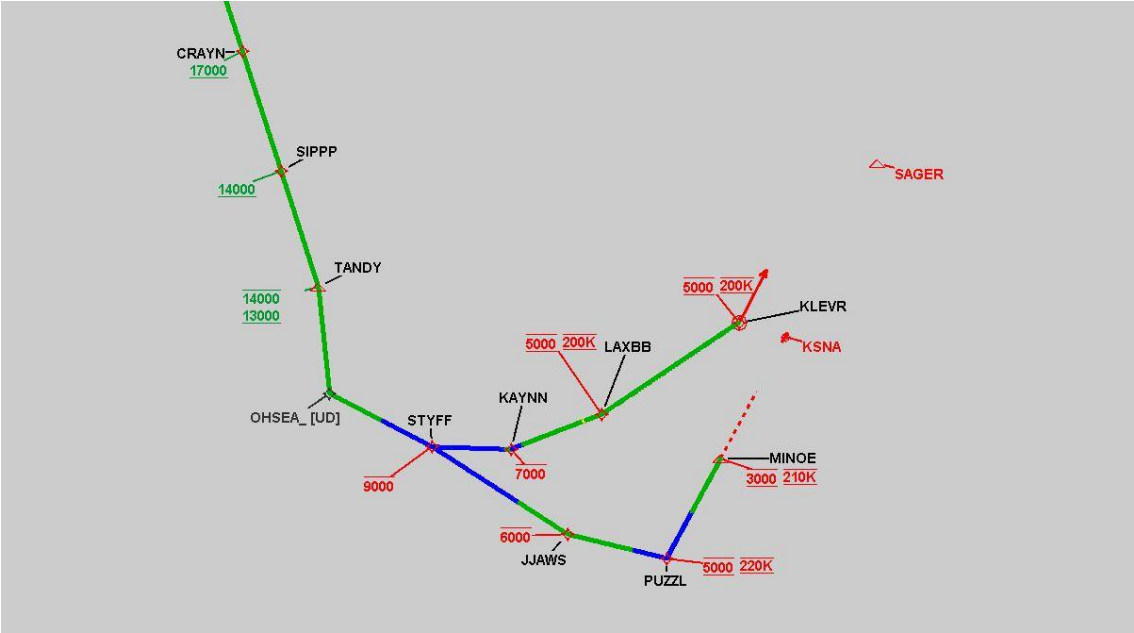
DME DME Assessment Results for OHSEA3 path RDHOT_KLEVR

Graphic Depiction 1



DME DME Assessment Results for OHSEA3 path RDHOT_KLEVR

Graphic Depiction 2



DME DME Assessment Results for OHSEA3 path REBRG_PCIFC

Results Summary

Flyability:	Completed
DME/DME:	Completed - No Critical DMEs
Name:	Bob CTR Graham
Project File:	C:\Users\Bob CTR Graham\Desktop\AREA NAV Projects and TARGETS Files\LAX\12-26-24_SOCAL_FINAL PKGS\OHSEA3 STAR\20240502_OHSEA.tgs
Output File:	C:\Users\Bob CTR Graham\Desktop\AREA NAV Projects and TARGETS Files\LAX\12-26-24_SOCAL_FINAL PKGS\OHSEA3 STAR\FINAL DOCS\KSNA [IFPA] OHSEA3 20240502_1707 MST\REBRG_PCIFC\KSNA OHSEA3 RNAV STAR REBRG PCIFC 20240502_1707 MST.pdf
Procedure Name:	OHSEA3
Software: DmeDmePlugin:	7.2.1
Date/Time:	05/02/2024 17:07 MST
Databases:	MITRE 3DEP 3 arcsec

Failures

No Failures

Warnings

No Warnings

Informational

No Informational

Notes For Flight Check

TACANS USED: NTD 110.60.

Flight Plan

Name	Type	Lat/Lon	Altitude (ft)	VNAV Mode	Ground Speed (kts)	Turn Type	Leg Type
REBRG	WP	N35° 58' 53.0000", W119° 36' 53.0000"	12000	VNAV	280	FLY_BY	TF
MMTLY	WP	N35° 39' 29.5100", W119° 40' 49.6500"	12000	VNAV	280	FLY_BY	TF
REESR	WP	N34° 44' 11.5100", W119° 10' 33.2500"	12000	VNAV	280	FLY_BY	TF
RCHEL	WP	N34° 34' 37.7600", W119° 04' 28.7100"	12000	VNAV	280	FLY_BY	TF
SHOLN	WP	N34° 26' 51.3900", W118° 59' 26.9800"	11000	VNAV	280	FLY_BY	TF
PCIFC	WP	N34° 13' 45.1500", W118° 50' 45.5900"	11000	VNAV	280	FLY_BY	TF

Flyability

Flight Type:	RNAV_STAR
Selected Airport:	KSNA [IFPA]
Climb Gradient:	None assigned
Speeds:	200 Ground Speed to 11000 FT
	240 Ground Speed to 18000 FT
	260 Ground Speed to 24000 FT
	340 Ground Speed above 24000 FT
Descent During a Turn:	Allowed
VNAV Mode:	Flight Plan

DME DME Assessment Results for OHSEA3 path REBRG_PCIFC

DME/DME	
RNP:	RNP 2
Flight Mode:	Manual
Line of Sight (DTED Level 0 Max):	Evaluated
Inertial Drift:	Enabled
Initial Drift:	0.558 NM
INS Drift Rate:	8.0 NM/Hour
Range Mode:	OSV
RNP Edges:	Evaluated
Min DME Range:	3.0 NM
DME Types:	DME, VOR-DME, VORTAC, TACAN
DME Include Angles:	30 to 150
Critical DMEs:	Allowed
DoD Facilities:	Included
Foreign Facilities:	Not included
High DMEs:	Included
Low DMEs:	Included
Terminal DMEs:	Included
Flight Check DMEs:	Not selected
Higher Altitudes:	Not Evaluated
Near Maximum Altitude:	Not Evaluated
Automatic ESVs:	Not enabled
Disabled DMEs:	None

DME/DME (Continued)										
DMEs Used										
#	Name	Lat/Lon	MAGVAR	Range	Type	Source	Critical	Status	Time	Distance
1	FLW	N35° 05' 35.1040", W119° 51' 56.0830"	16.0 E	40	L	IFPA	NO	Enabled	53.8 %	53.8 %
2	EHF	N35° 29' 04.3957", W119° 05' 50.2571"	14.0 E	130	H	IFPA	NO	Enabled	58.8 %	58.8 %
3	FIM	N34° 21' 24.0970", W118° 52' 52.6480"	15.0 E	40	L	IFPA	NO	Enabled	23.6 %	23.6 %
4	RZS	N34° 30' 34.3151", W119° 46' 15.5573"	14.0 E	130	H	IFPA	NO	Enabled	27.1 %	27.1 %
5	VTU	N34° 06' 53.7239", W119° 02' 56.9994"	15.0 E	40	L	IFPA	NO	Enabled	31 %	31 %
6	SMO	N34° 00' 37.5301", W118° 27' 22.9701"	15.0 E	40	L	IFPA	NO	Enabled	4.6 %	4.6 %
7	MOD	N37° 37' 38.5480", W120° 57' 28.3265"	17.0 E	130	DH	IFPA	NO	Enabled	4.3 %	4.3 %
8	GMN	N34° 48' 14.5030", W118° 51' 40.8970"	16.0 E	40	L	IFPA	NO	Enabled	28.3 %	28.3 %
9	NTD	N34° 07' 23.8299", W119° 07' 19.1248"	12.0 E	40	L	IFPA	NO	Enabled	31.6 %	31.6 %
10	CMA	N34° 12' 45.0757", W119° 05' 39.6787"	15.0 E	40	L	IFPA	NO	Enabled	4.5 %	4.5 %
11	AVE	N35° 38' 49.1120", W119° 58' 42.9800"	16.0 E	130	DH	IFPA	NO	Enabled	100 %	100 %
12	LHS	N34° 40' 58.7040", W118° 34' 36.9770"	15.0 E	130	H	IFPA	NO	Enabled	40.4 %	40.4 %
13	LAX	N33° 55' 59.3368", W118° 25' 55.2460"	15.0 E	130	H	IFPA	NO	Enabled	10.6 %	10.6 %
14	TTE	N35° 54' 46.9842", W119° 01' 14.9144"	16.0 E	130	DH	IFPA	NO	Enabled	96.2 %	96.2 %

DME DME Assessment Results for OHSEA3 path REBRG_PCIFC

Flight Check DME Selection

Distance [NM]	Selected DMEs					Alternate
0.0	AVE	TTE	MOD			
3.9	EHF	AVE	MOD	TTE		
5.0	EHF	AVE	TTE			
15.3	FLW	EHF	AVE	TTE		
64.0	FLW	TTE	EHF	RZS	AVE	
71.4	GMN	TTE	RZS	AVE	LHS	FLW
72.5	RZS	AVE	LHS	TTE	FLW	
77.0	LHS	TTE	RZS	AVE		
78.4	LHS	TTE	RZS	AVE	NTD	
95.2	FIM	LHS	AVE	GMN	VTU	TTE
98.3	FIM	LHS	AVE	NTD	VTU	TTE
104.8	LAX	LHS	NTD	VTU	AVE	GMN

Inertial Drift Segments

#	Start Location	End Location	Length [NM]
---	----------------	--------------	-------------

Available DMEs by Waypoints

Waypoint Before	Waypoint After	DME List	Suggested DMEs
REBRG	MMTLY	AVE, FLW, EHF, MOD, TTE	
MMTLY	REESR	FLW, AVE, EHF, TTE, LHS, VTU, GMN, RZS, NTD	
REESR	RCHEL	AVE, TTE, VTU, LHS, GMN, RZS, FIM, NTD	
RCHEL	SHOLN	AVE, TTE, LHS, VTU, GMN, RZS, FIM, NTD	
SHOLN	PCIFC	AVE, LAX, TTE, SMO, LHS, VTU, CMA, GMN, FIM, NTD	

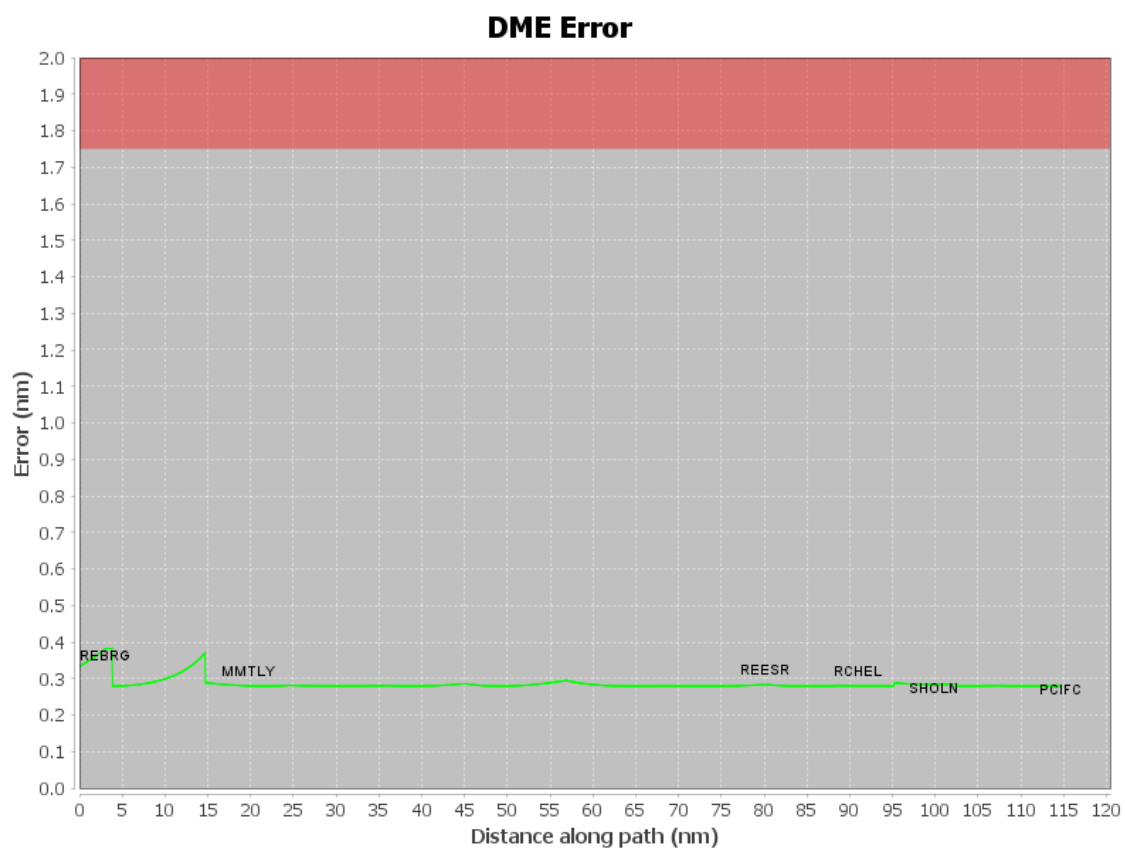
User Data Files

#	File Name
None	

User DMEs

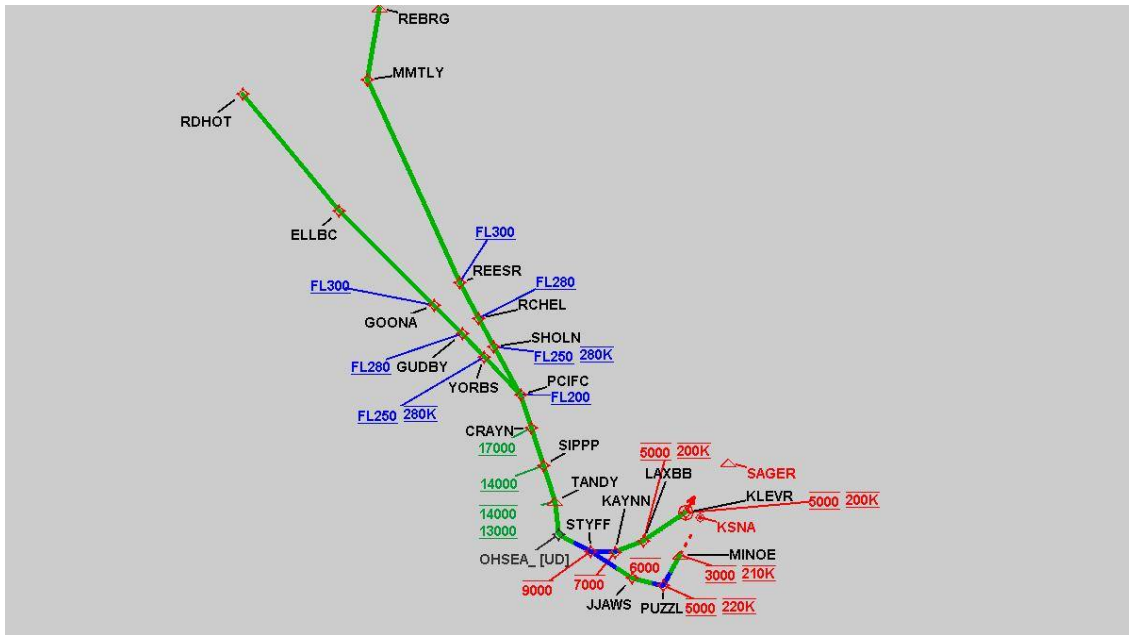
#	Name	Lat/Lon	MAGVAR	Range	Elevation [ft]	Frequency	Replaces	Status
None								

DME DME Assessment Results for OHSEA3 path REBRG_PCIFC



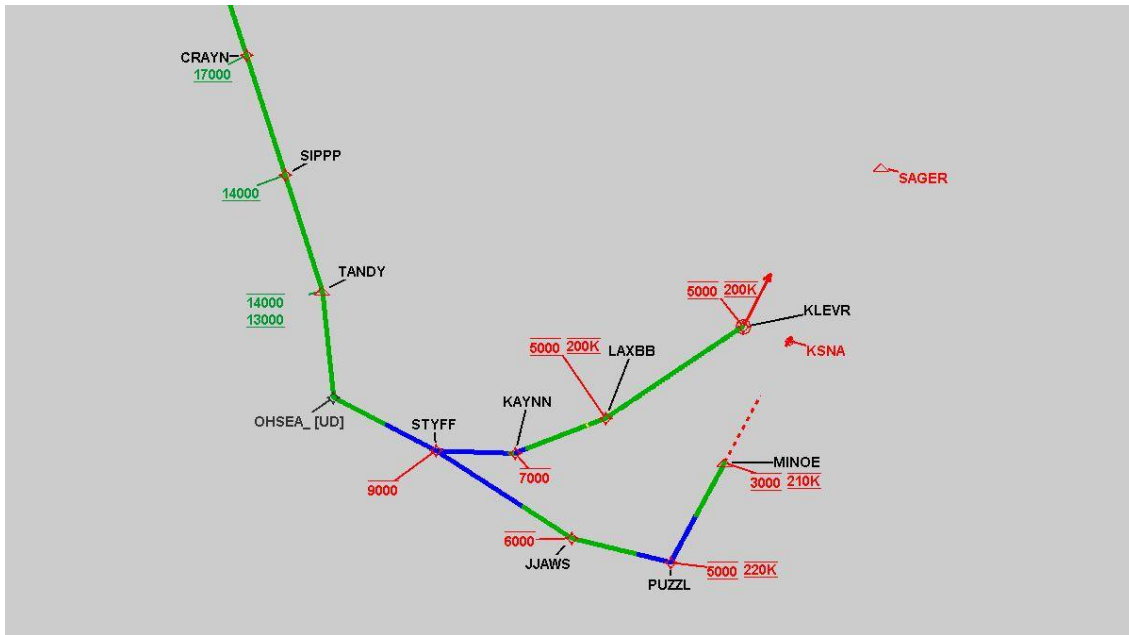
DME DME Assessment Results for OHSEA3 path REBRG_PCIFC

Graphic Depiction 1



DME DME Assessment Results for OHSEA3 path REBRG_PCIFC

Graphic Depiction 2



DME DME Assessment Results for OHSEA3 path STYFF_MINOE

Results Summary

Flyability:	Completed
DME/DME:	Completed - No Critical DMEs
Name:	Bob CTR Graham
Project File:	C:\Users\Bob CTR Graham\Desktop\AREA NAV Projects and TARGETS Files\LAX\12-26-24_SOCAL_FINAL PKGS\OHSEA3 STAR\20240502_OHSEA.tgs
Output File:	C:\Users\Bob CTR Graham\Desktop\AREA NAV Projects and TARGETS Files\LAX\12-26-24_SOCAL_FINAL PKGS\OHSEA3 STAR\FINAL DOCS\KSNA [IFPA] OHSEA3 20240502_1707 MST\STYFF_MINOE\KSNA OHSEA3 RNAV STAR STYFF MINOE 20240502_1707 MST.pdf
Procedure Name:	OHSEA3
Software: DmeDmePlugin:	7.2.1
Date/Time:	05/02/2024 17:07 MST
Databases:	MITRE 3DEP 3 arcsec

Failures

No Failures

Warnings

No Warnings

Informational

No Informational

Notes For Flight Check

TACANS USED: NTD 110.60.

Flight Plan

Name	Type	Lat/Lon	Altitude (ft)	VNAV Mode	Ground Speed (kts)	Turn Type	Leg Type
STYFF	WP	N33° 31' 18.0000", W118° 27' 56.4000"	9000	VNAV	280	FLY_BY	TF
JJAWS	WP	N33° 23' 55.5300", W118° 14' 11.8500"	6000	VNAV	280	FLY_BY	TF
PUZZL	WP	N33° 21' 52.7800", W118° 04' 06.4900"	5000	VNAV	220	FLY_BY	TF
MINOE	WP	N33° 30' 15.3700", W117° 58' 38.1000"	3000	VNAV	210	FLY_BY	TF

Flyability

Flight Type:	RNAV_STAR
Selected Airport:	KSNA [IFPA]
Climb Gradient:	None assigned
Speeds:	200 Ground Speed to 11000 FT
	240 Ground Speed to 18000 FT
	260 Ground Speed to 24000 FT
	340 Ground Speed above 24000 FT
Descent During a Turn:	Allowed
VNAV Mode:	Flight Plan

DME DME Assessment Results for OHSEA3 path STYFF_MINOE

DME/DME	
RNP:	RNP 2
Flight Mode:	Manual
Line of Sight (DTED Level 0 Max):	Evaluated
Inertial Drift:	Enabled
Initial Drift:	0.558 NM
INS Drift Rate:	8.0 NM/Hour
Range Mode:	OSV
RNP Edges:	Evaluated
Min DME Range:	3.0 NM
DME Types:	DME, VOR-DME, VORTAC, TACAN
DME Include Angles:	30 to 150
Critical DMEs:	Allowed
DoD Facilities:	Included
Foreign Facilities:	Not included
High DMEs:	Included
Low DMEs:	Included
Terminal DMEs:	Included
Flight Check DMEs:	Not selected
Higher Altitudes:	Not Evaluated
Near Maximum Altitude:	Not Evaluated
Automatic ESVs:	Not enabled
Disabled DMEs:	None

DME/DME (Continued)										
DMEs Used										
#	Name	Lat/Lon	MAGVAR	Range	Type	Source	Critical	Status	Time	Distance
1	POM	N34° 04' 42.1962", W117° 47' 13.4633"	15.0 E	40	L	IFPA	NO	Enabled	12.2 %	10.4 %
2	SMO	N34° 00' 37.5301", W118° 27' 22.9701"	15.0 E	40	L	IFPA	NO	Enabled	9.7 %	10.5 %
3	ELB	N33° 40' 33.7284", W117° 43' 51.9285"	14.0 E	25	T	IFPA	NO	Enabled	15.3 %	13.1 %
4	LAX	N33° 55' 59.3368", W118° 25' 55.2460"	15.0 E	130	H	IFPA	NO	Enabled	49.8 %	49.4 %
5	SXC	N33° 22' 30.2010", W118° 25' 11.6750"	15.0 E	130	H	IFPA	NO	Enabled	30.8 %	33.3 %
6	OCN	N33° 14' 26.2815", W117° 25' 03.7947"	15.0 E	130	H	IFPA	NO	Enabled	28.4 %	26.3 %

Flight Check DME Selection						
Distance [NM]	Selected DMEs					Alternate
0.0						
8.8	SMO	SXC	LAX			
12.2	SXC	LAX				
16.1	SXC	LAX	OCN			
19.5						
26.7	LAX	OCN				
27.7	LAX	ELB	OCN			
28.6	POM	OCN	LAX	ELB		

Inertial Drift Segments			
#	Start Location	End Location	Length [NM]
1	N33° 31' 18.0000", W118° 27' 56.4000"	N33° 26' 34.0901", W118° 19' 06.7341"	8.765
2	N33° 22' 33.4221", W118° 07' 26.4227"	N33° 25' 44.7760", W118° 01' 35.0561"	7.2644

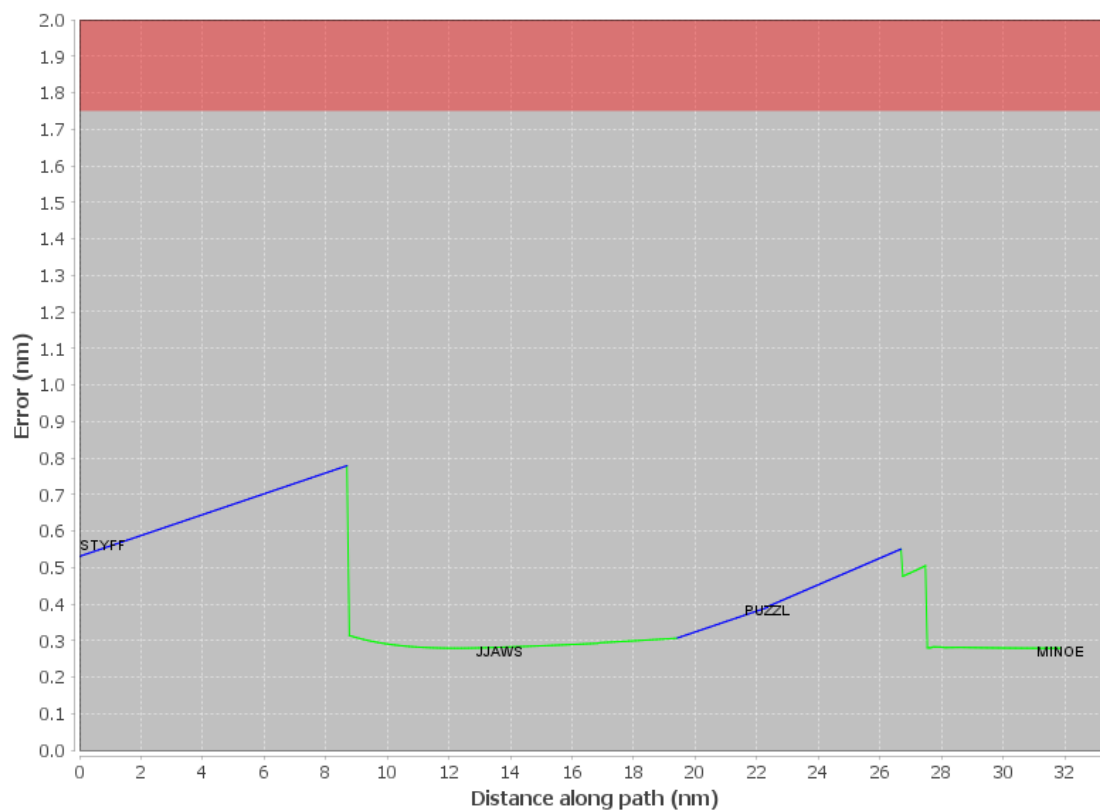
DME DME Assessment Results for OHSEA3 path STYFF_MINOE

Available DMEs by Waypoints			
Waypoint Before	Waypoint After	DME List	Suggested DMEs
STYFF	JJAWS	LAX, SMO, SXC	
JJAWS	PUZZL	LAX, OCN, SXC	
PUZZL	MINOE	LAX, ELB, OCN, POM	

User Data Files								
#	File Name							
None								
User DMEs								
#	Name	Lat/Lon	MAGVAR	Range	Elevation [ft]	Frequency	Replaces	Status
None								

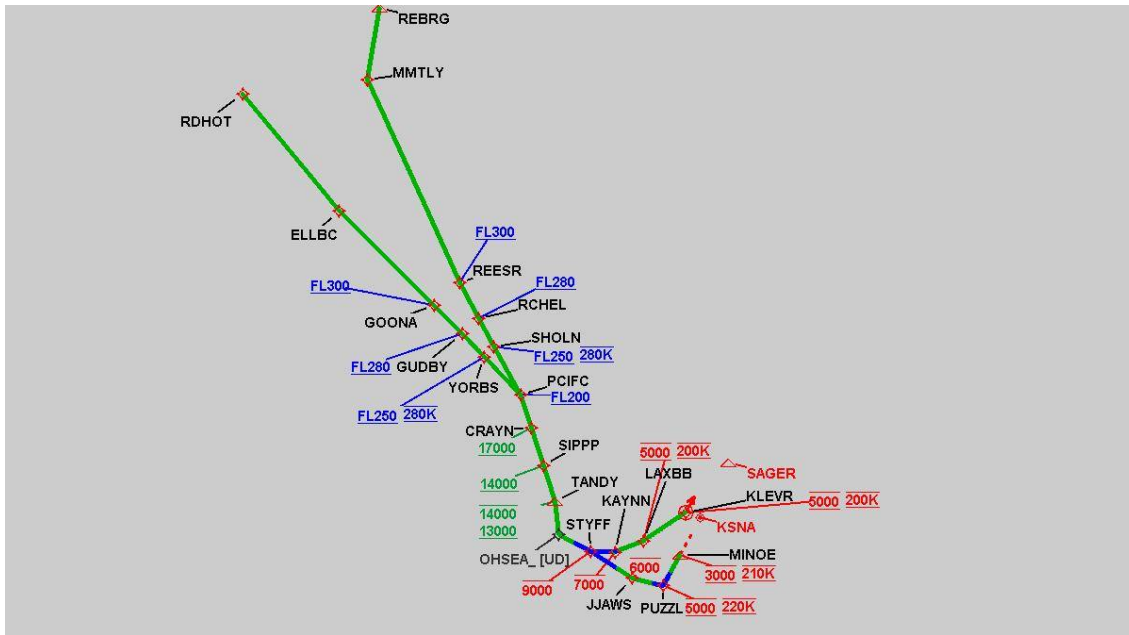
DME DME Assessment Results for OHSEA3 path STYFF_MINOE

DME Error



DME DME Assessment Results for OHSEA3 path STYFF_MINOE

Graphic Depiction 1



Graphic Depiction 2

