

| | | | | | |
|--|--------------------------------|--------------------------------|-------------------------------------|---|--|
| Flight Procedures Cover Page | Task Action: Cancellation | Task Type: IAP | Estimated Chart Date: 09/10/2020 | APWS Task ID: 2E0B1A4847444A55A9ECA975C8FD15A6 | APWS Project ID: 2D1E55E0404146AD86F5FA41C938F93B |
| Procedure: VOR/DME RWY 14 AMDT 10 | | Enroute: NO | Specialist: Lafferty, James | | Agreement Number: |
| Airport ID: KBFD | Airport Name: BRADFORD RGNL | | Airport City: BRADFORD | | State: PA |
| Facility ID: | Facility Type: | Flight Inspection Remark Type: | | | |
| <p>Procedure Comments:</p> <p>PROCEDURE CANCELLATION</p> <p>CANCELS NOTAM 9/0278</p> <p>CONTACT DAVE TEFFETELLER AT 202-267-5177</p> | | | | | |



BRADFORD, PENNSYLVANIA

CANCEL

AL 226 (244)

10266

| | | | |
|-------------|---------|----------|------|
| VOR/DME BFD | APP CRS | Rwy Idg | 6309 |
| 116.6 | 144° | TDZE | 2118 |
| Chan 113 | | Apt Elev | 2143 |

VOR/DME RWY 14
BRADFORD RGNL (BFD)

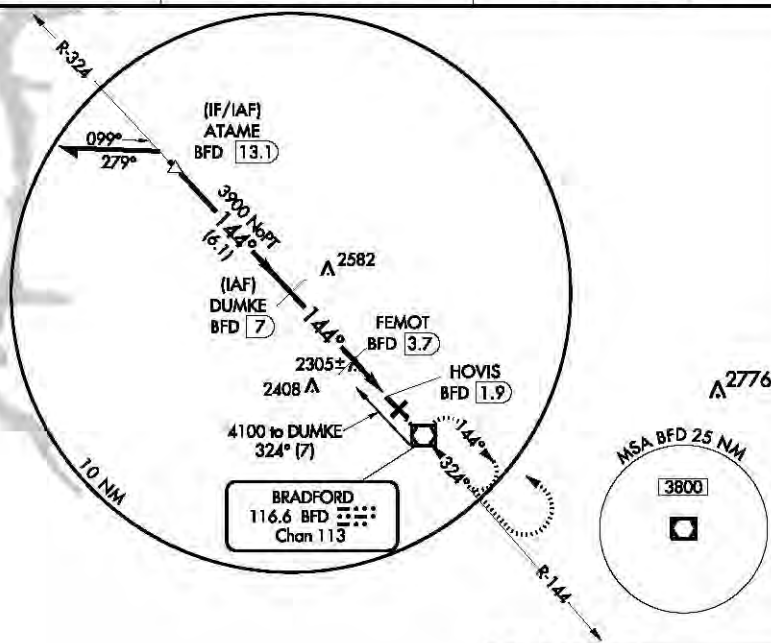
⚠ Visibility reduction by helicopters NA. When local altimeter setting not received, use St Marys altimeter setting and increase all MDA 100 feet and increase S-14 Cat C and D visibility ¼ mile.

MISSED APPROACH: Climb direct BFD VOR/DME, then continue climb to 3900 then left turn direct BFD VOR/DME and hold.

ASOS
133.825

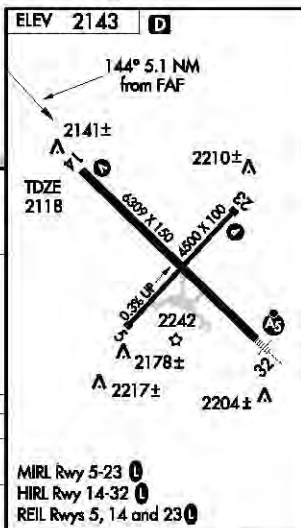
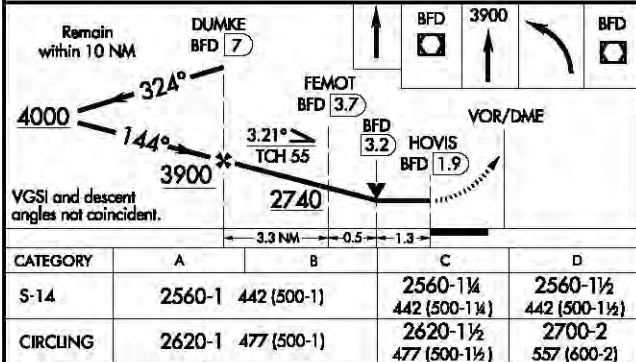
CLEVELAND CENTER
124.325 353.85

UNICOM
123.075 (CTAF) 0



NE-4, 12 JAN 2012 to 09 FEB 2012

NE-4, 12 JAN 2012 to 09 FEB 2012



BRADFORD, PENNSYLVANIA
Amdt 10 23SEP10

41°48'N - 78°38'W

BRADFORD RGNL (BFD)
VOR/DME RWY 14

MIRL Rwy 5-23 0
HIRL Rwy 14-32 0
REIL Rws 5, 14 and 23 0