

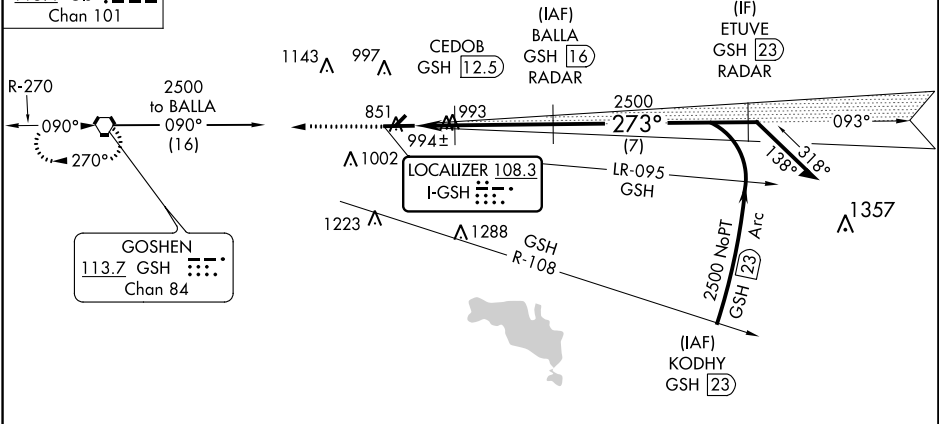
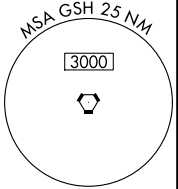
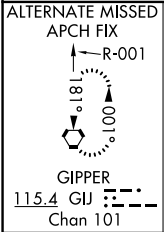
Flight Procedures Cover Page	Task Action: P-NOTAM	Task Type: IAP	Estimated Chart Date: 07/15/2021	APWS Task ID: 2C2951E43B874DDEB176E70E50062872	APWS Project ID: 961339127011485A812A978A54A64D49
Procedure: ILS OR LOC RWY 27 AMDT 1B		Enroute: NO	Specialist: Lafferty, James		Agreement Number:
Airport ID: KGSH			Airport City: GOSHEN		State: IN
Facility ID:	Facility Type:	Flight Inspection Remark Type:			
<div> <div>Procedure Comments:</div> <div> <div>P-NOTAM</div> <div>This Cancels FDC 0/3643</div> <div>Order 8260.3, chapter 2, New Circling Criteria Applied</div> <div>Contact Dave Teffeteller at 202-267-5177</div> </div> <div> <div>QUALITY 18 CHECKED</div> <div>QUALITY 41 CHECKED</div> </div> </div>					

LOC I-GSH <b>108.3</b>	APP CRS <b>273°</b>	Rwy Idg 6050 TDZE 827 Apt Elev 827
---------------------------	------------------------	---

OLD

ILS or LOC RWY 27  
GOSHEN MUNI (GSH)

DME or RADAR required.			MISSED APPROACH: Climb to 2500 direct GSH VORTAC and hold.
ASOS <b>121.45</b>	SOUTH BEND APP CON ★ <b>132.05 257.8</b>	CLNC DEL <b>125.25</b>	UNICOM <b>123.05 (CTAF) 0</b>



ELEV 827

TDZE 827

2500

↑

GSH

2500

↑

GSH

2500

↑

GSH

2500

↑

GSH

2500

↑

GSH

2500

↑

GSH

2500

↑

GSH

2500

↑

GSH

2500

↑

GSH

2500

↑

GSH

2500

↑

GSH

2500

↑

GSH

2500

↑

GSH

2500

↑

GSH

2500

↑

GSH

2500

↑

GSH

2500

↑

GSH

2500

↑

GSH

2500

↑

GSH

2500

↑

GSH

2500

↑

GSH

2500

↑

GSH

2500

↑

GSH

2500

↑

GSH

2500

↑

GSH

2500

↑

GSH

2500

↑

GSH

2500

↑

GSH

2500

↑

GSH

2500

↑

GSH

2500

↑

GSH

2500

↑

GSH

2500

↑

GSH

2500

↑

GSH

2500

↑

GSH

2500

↑

GSH

2500

↑

GSH

2500

↑

GSH

2500

↑

GSH

2500

↑

GSH

2500

↑

GSH

2500

↑

GSH

2500

↑

GSH

2500

↑

GSH

2500

↑

GSH

2500

↑

GSH

2500

↑

GSH

2500

↑

GSH

2500

↑

GSH

2500

↑

GSH

2500

↑

GSH

2500

↑

GSH

2500

↑

GSH

2500

↑

GSH

2500

↑

GSH

2500

↑

GSH

2500

↑

GSH

2500

↑

GSH

2500

↑

GSH

2500

↑

GSH

2500

↑

GSH

2500

↑

GSH

2500

↑

GSH

2500

↑

GSH

2500

↑

GSH

2500

↑

GSH

2500

↑

GSH

2500

↑

GSH

2500

↑

GSH

2500

↑

GSH

2500

↑

GSH

2500

↑

GSH

2500

↑

GSH

2500

↑

GSH

2500

↑

GSH

2500

↑

GSH

2500

↑

GSH

2500

↑

GSH

2500

↑

GSH

2500

↑

GSH

2500

↑

GSH

2500

↑

GSH

2500

↑

GSH

2500

↑

GSH

2500

↑

GSH

2500

↑

GSH

2500

↑

GSH

2500

↑

GSH

2500

↑

GSH

2500

↑

GSH

2500

↑

GSH

2500

↑

GSH

2500

↑

GSH

2500

↑

GSH

2500

↑

GSH

2500

↑

GSH

2500

↑

GSH

2500

↑

GSH

2500

↑

GSH

2500

↑

GSH

2500

↑

GSH

2500

↑

GSH

2500

↑

GSH

2500

↑

GSH

2500

↑

GSH

2500

↑

GSH

2500

↑

GSH

2500

↑

GSH

2500

↑

GSH

2500

↑

GSH

2500

↑

GSH

2500

↑

GSH

2500

↑

GSH

2500

↑

GSH

2500

↑

GSH

2500

↑

GSH

2500

↑

GSH

2500

↑

GSH

2500

↑

GSH

2500

↑

GSH

2500

↑

GSH

2500

↑

GSH

2500

↑

GSH

2500

↑

GSH

2500

↑

GSH

2500

↑

GSH

2500

↑

GSH

2500

↑

GSH

2500

↑

GSH

2500

↑

GSH

2500

↑

GSH

2500

↑

GSH

2500

↑

GSH

2500

↑

GSH

2500

↑

GSH

2500

↑

GSH

2500

↑

GSH

2500

↑

GSH

2500

↑

GSH

2500

↑

GSH

2500

↑

GSH

2500

↑

GSH

2500

↑

GSH

2500

↑

GSH

2500

↑

GSH

2500

↑

GSH

2500

↑

GSH

2500

↑

GSH

2500

↑

GSH

2500

↑

GSH

2500

↑

GSH

2500

↑

GSH

2500

↑

GSH

2500

↑

GSH

2500

↑

GSH

2500

↑

GSH

2500

↑

GSH

2500

↑

GSH

2500

↑

GSH

2500

↑

GSH

2500

↑

GSH

2500

↑

GSH

2500

↑

GSH

2500

↑

GSH

2500

↑

GSH

2500

↑

GSH

2500

↑

GSH

2500

↑

GSH

2500

↑

GSH

2500

↑

GSH

2500

↑

GSH

2500

↑

GSH

2500

↑

GSH

2500

↑

GSH

2500

↑

GSH

2500

↑

GSH

2500

↑

GSH

2500

↑

GSH

2500

↑

GSH

2500

↑

GSH

2500

↑

GSH

2500

↑

GSH

2500

↑

GSH

2500

↑

GSH

2500

↑

GSH

2500

↑

GSH

2500

↑

GSH

2500

↑

GSH

2500

↑

GSH

2500

↑

GSH

2500

↑

GSH

2500

↑

GSH

2500

↑

GSH

2500

↑

GSH

2500

↑

GSH

2500

↑

GSH

2500

↑

GSH

2500

↑

GSH

2500

↑

GSH

2500

↑

GSH

2500

↑

GSH

2500

↑

GSH

2500

↑

GSH

2500

↑

GSH

2500

↑

GSH

2500

↑

GSH

2500

↑

GSH

2500

↑

GSH

2500

↑

GSH

2500

↑

GSH

2500

↑

GSH

2500

↑

GSH

2500

↑

GSH

2500

↑

GSH

2500

↑

GSH

2500

↑

GSH

2500

↑

GSH

2500

↑

GSH

2500

↑

GSH

2500

↑

GSH

2500

↑

GSH

2500

↑

GSH

2500

↑

GSH

2500

↑

GSH

2500

↑

GSH

2500

↑

GSH

2500

↑

GSH

2500

↑

GSH

2500

↑

GSH

2500

↑

GSH

2500

↑

GSH

2500

↑

GSH

2500

↑

GSH

2500

↑

GSH

2500

↑

GSH

2500

↑

GSH

2500

↑

GSH

2500

↑

GSH

2500

↑

GSH

2500

↑

GSH

2500

↑

GSH

2500

↑

GSH

2500

↑

GSH

2500

↑

GSH

2500

↑

GSH

2500

↑

GSH

2500

↑

GSH

2500

↑

GSH

2500

↑

GSH

2500

↑

GSH

2500

↑

GSH

2500

↑

GSH

2500

↑

GSH

2500

↑

GSH

2500

↑

GSH

2500

↑

GSH

2500

↑

GSH

2500

↑

GSH

2500

↑

GSH

2500

↑

GSH

2500

↑

GSH

2500

↑

GSH

2500

↑

GSH

2500

↑

GSH

2500

↑

GSH

2500

↑

GSH

2500

↑

GSH

2500

↑

GSH

2500

↑

GSH

2500

↑

GSH

2500

↑

GSH

2500

↑

GSH

2500

↑

GSH

2500

↑

GSH

2500

↑

GSH

2500

↑

GSH

2500

↑

GSH

2500

↑

GSH

2500

↑

GSH

2500

↑

GSH

2500

↑

GSH

2500

↑

GSH

2500

↑

GSH

2500

↑

GSH

2500

↑

GSH

2500

↑

GSH

2500

↑

GSH

2500

↑

GSH

2500

↑

GSH

2500

↑

GSH

2500

↑

GSH

2500

↑

GSH

2500

↑

GSH

2500

↑

GSH

2500

↑

GSH

2500

↑

GSH

2500

↑

GSH

2500

↑

GSH

2500

↑

GSH

2500

↑

GSH

2500

↑

GSH

2500

↑

GSH

2500

↑

GSH

2500

↑

GSH

2500

↑

GSH

2500

↑

GSH

2500

↑

GSH

2500

↑

GSH

2500

↑

GSH

2500

↑

GSH

2500

↑

GSH

2500

↑

GSH</

EC-2, 21 MAY 2020 to 18 JUN 2020

EC-2, 21 MAY 2020 to 18 JUN 2020

