

Flight Procedures Cover Page	Task Action: FLIGHT CHECK	Task Type: IAP	Estimated Chart Date: 06/15/2023	APWS Task ID: 2B99A992C74543239607672CBC65D8E6	APWS Project ID: 8D8298C92E7840399A4CF3955D4FC8E1
Procedure: ILS Y OR LOC Y RWY 26L ORIG		Enroute: NO	Specialist: Donahue, Liam		Agreement Number:
Airport ID: KLAS			Airport City: LAS VEGAS		State: NV
Facility ID: RLE	Facility Type: ILS	Flight Inspection Remark Type: New FC Slot			
<div>Procedure Comments: Active airport data used. GPS Required. Approval Letter requesting mandatory altitude at IF BERBN in order to connect to COKTL, JAYSN and RVDRZ STARs. CONTACT: ERIC SUSKI, AJV- A431 MANAGER, 405-954-7331</div> <div><div>QUALITY 29 CHECKED</div><div>3/30/23 J. DuBois</div><div>QUALITY 38 CHECKED</div></div>					

[illegible]

FIG

ILS Y or LOC Y RWY 26L  
HARRY REID INTL (LAS)

**MISSED APPROACH:** Climb to 3200 then climbing right turn to 6000 heading 080° and on BLD R-286 to BLD VORTAC and hold, continue climb-in-hold to 6000.

[illegible]

AUTOMATED AL-662 ILS Y or LOC Y RWY 26L  
AUTOMATED AL-662 ILS Y or LOC Y RWY 26L

SW-4  
3/13/23  
COMPILER: HD  
REVIEWER:  
DBL CHKR:  
EFF: FIG

HARRY REID INTL (LAS)  
ILS Y or LOC Y RWY 26L

TO: AFS-460

From:

Subject: Approval: KLAS, Las Vegas, NV

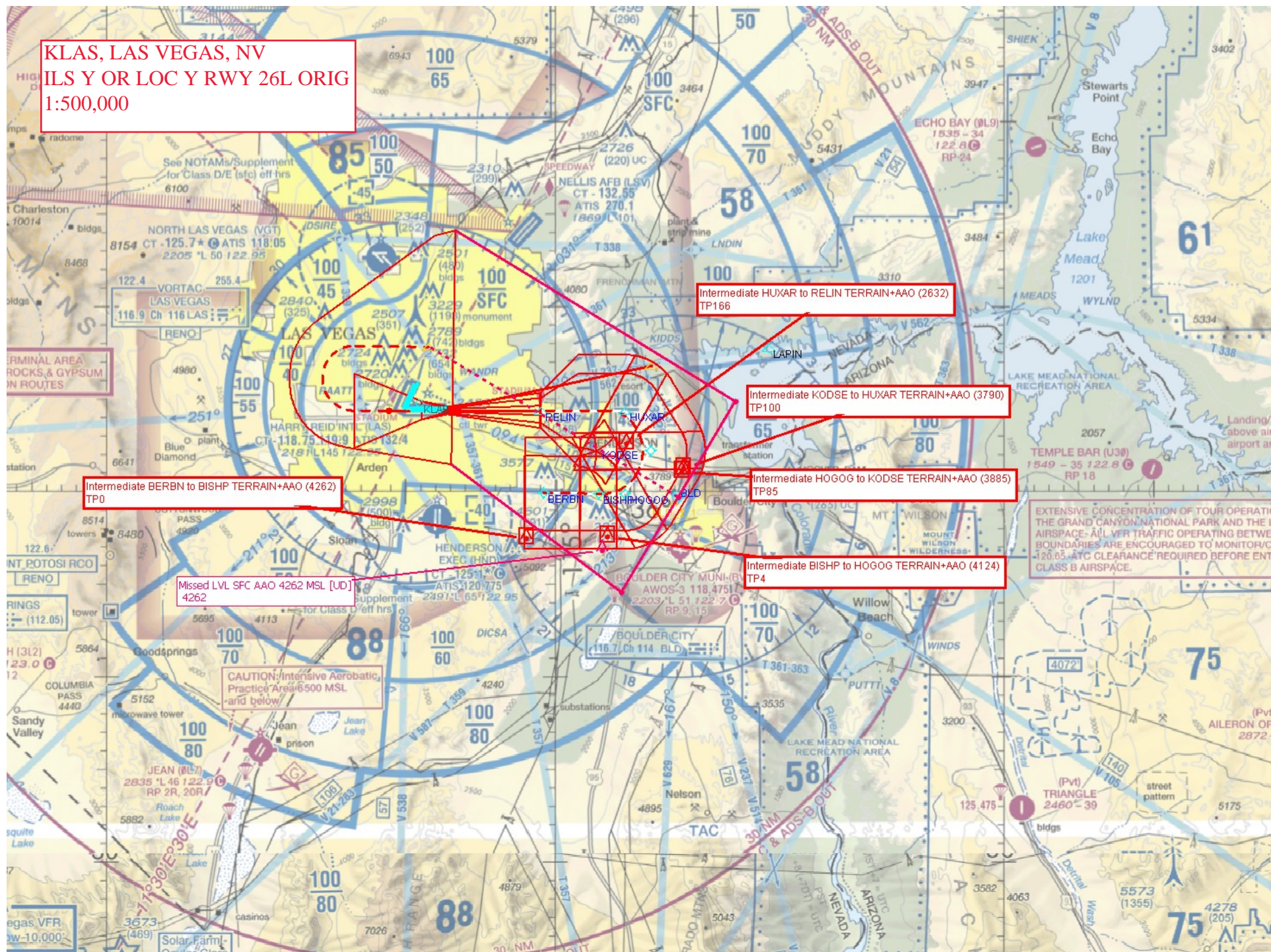
IAP ILS Y or LOC Y RWY 26L ORIG

Issue: Mandatory altitude at intermediate fix, 8260.19I para 8-6-10.n.(1)

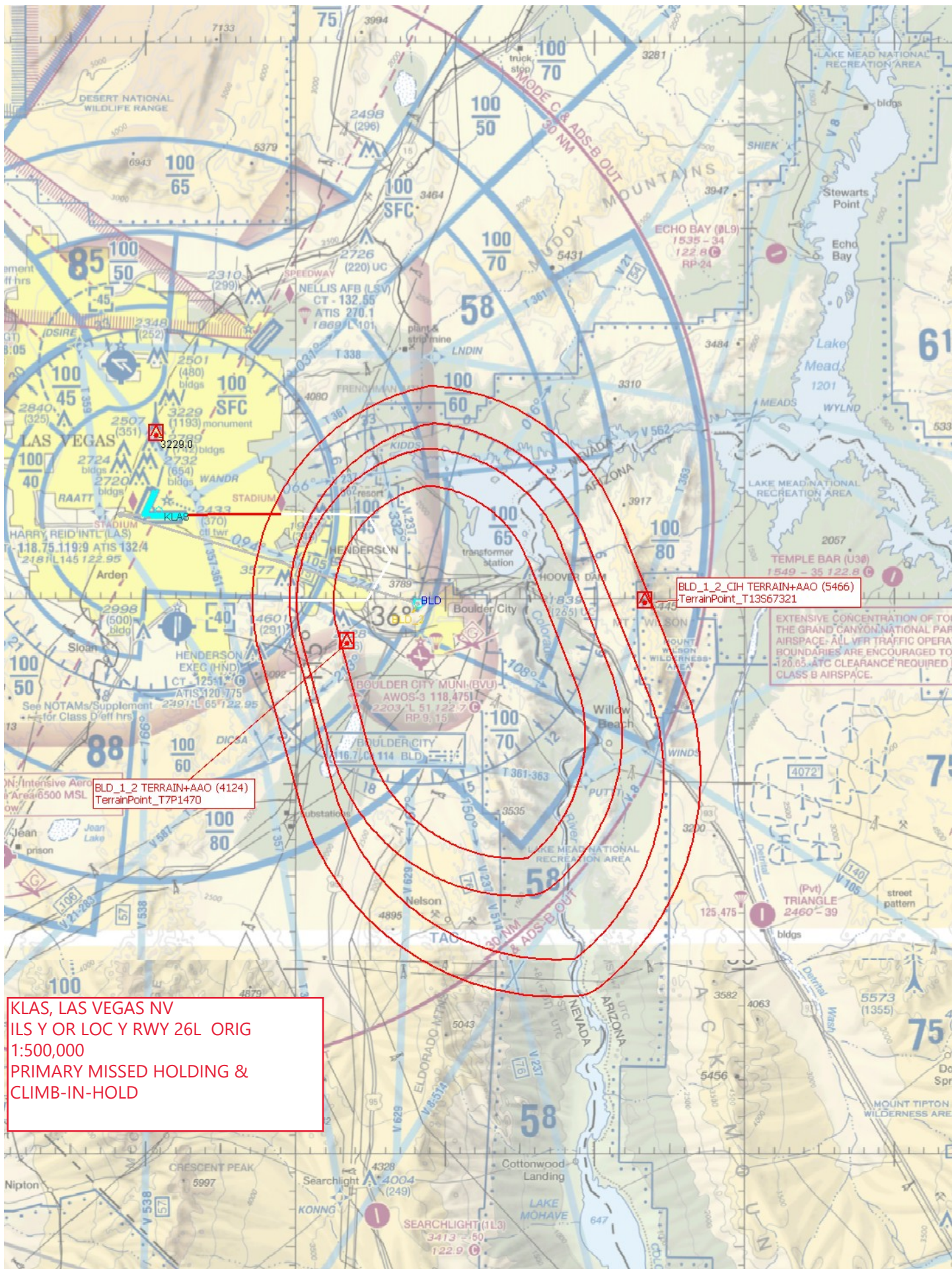
Request approval to publish a mandatory altitude of 8000' at the IF BERBN in order to connect to COKTL, JAYSN, and RNDRZ RNAV arrivals.



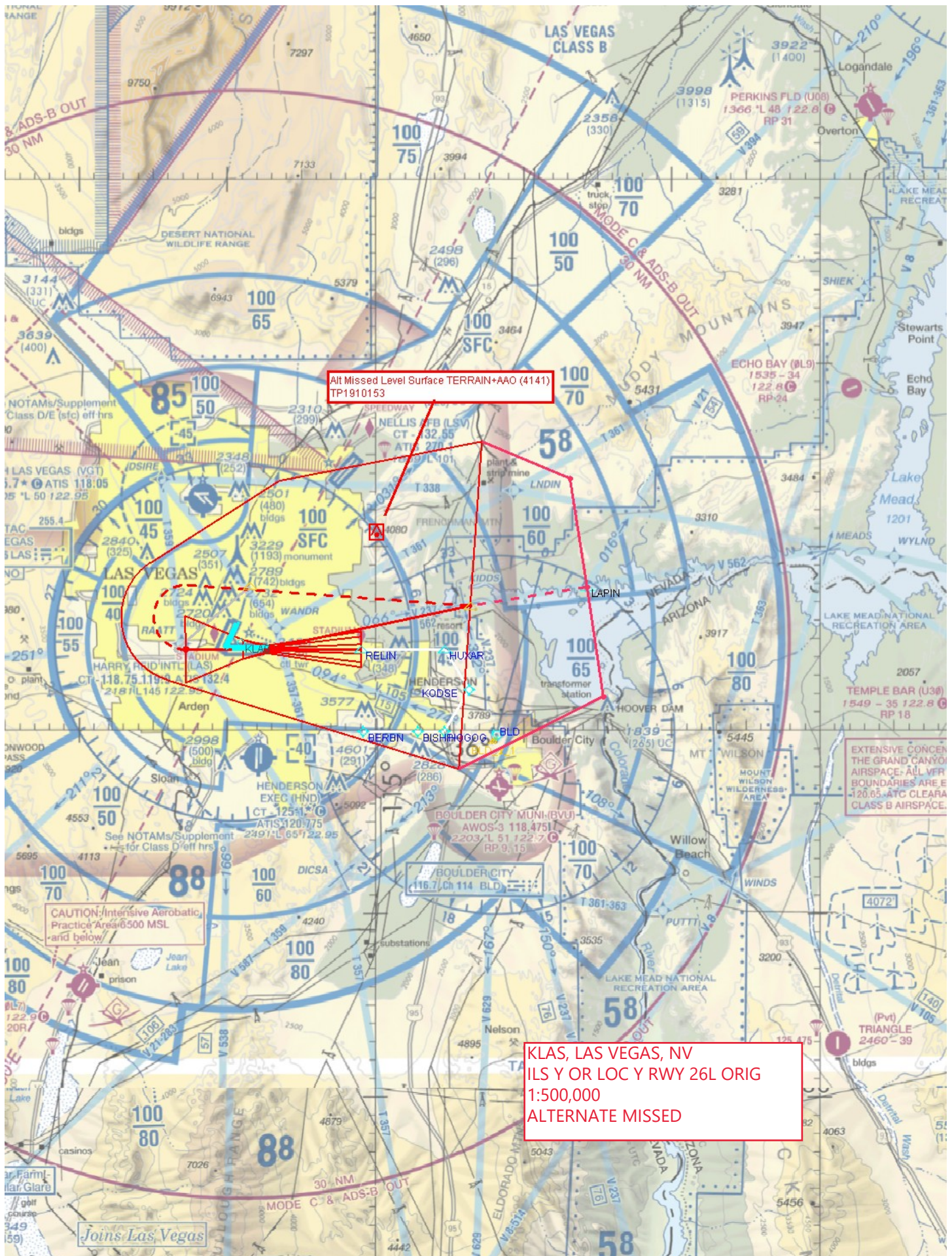
KLAS, LAS VEGAS, NV  
ILS Y OR LOC Y RWY 26L ORIG  
1:500,000



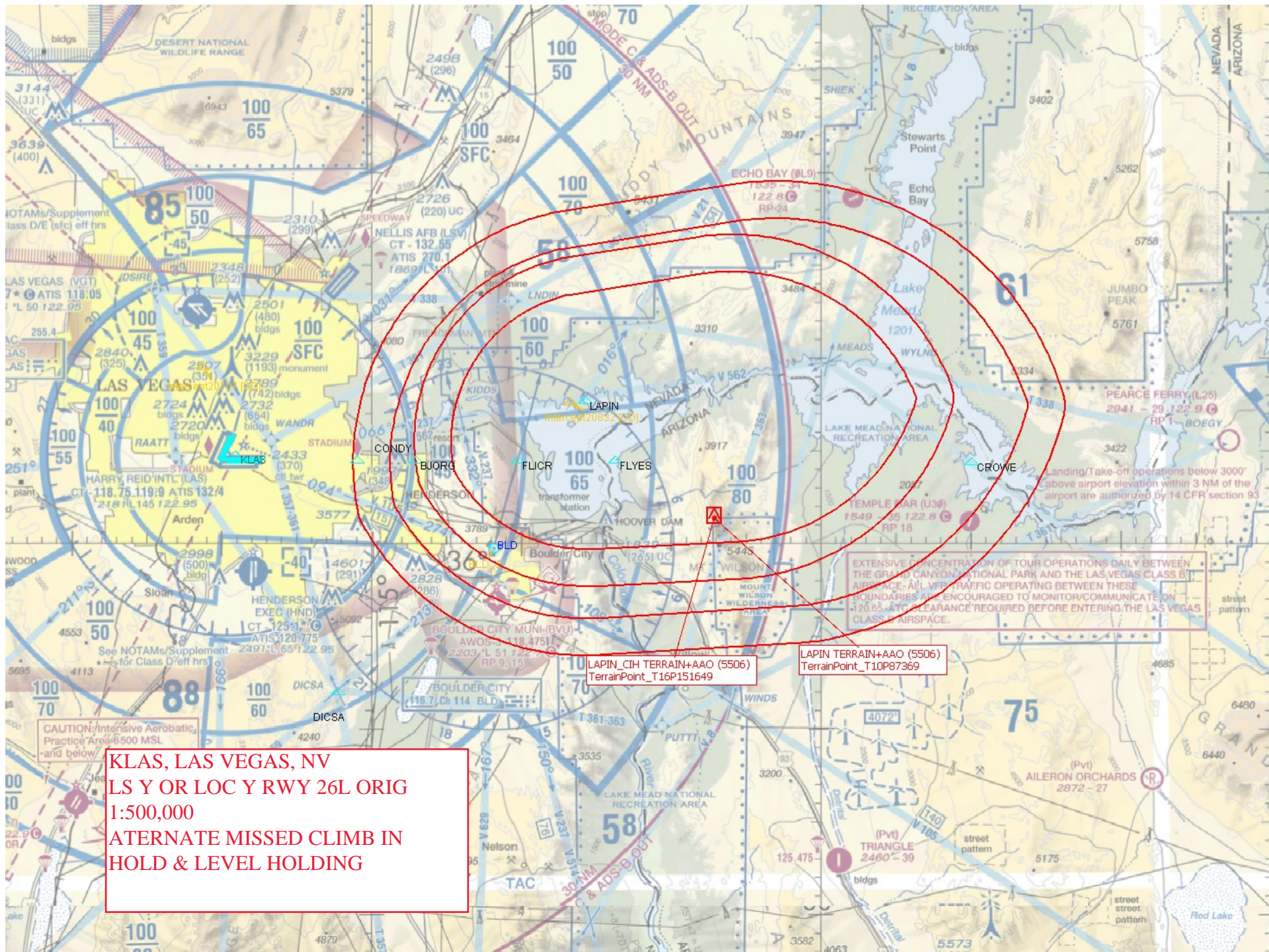




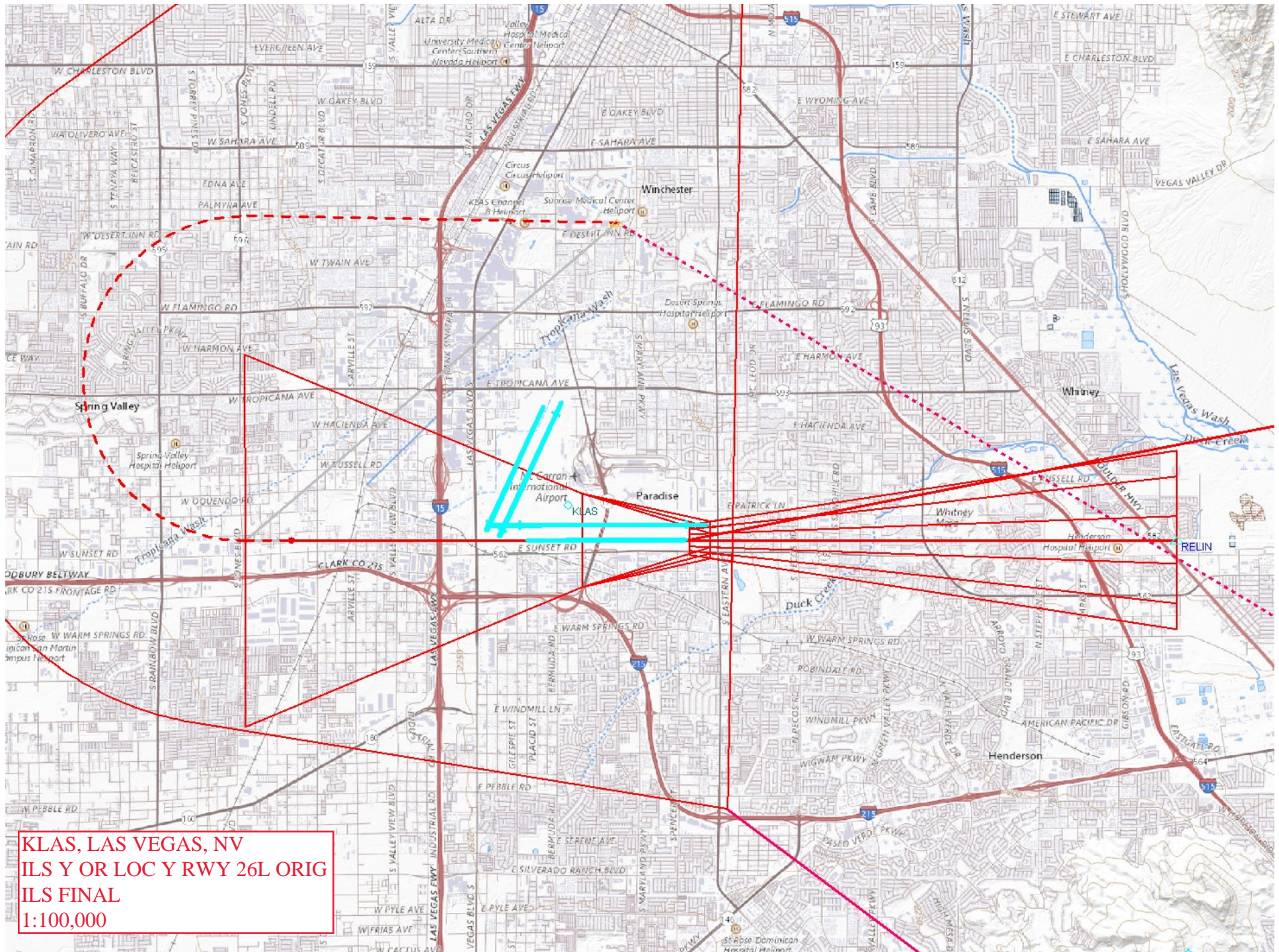












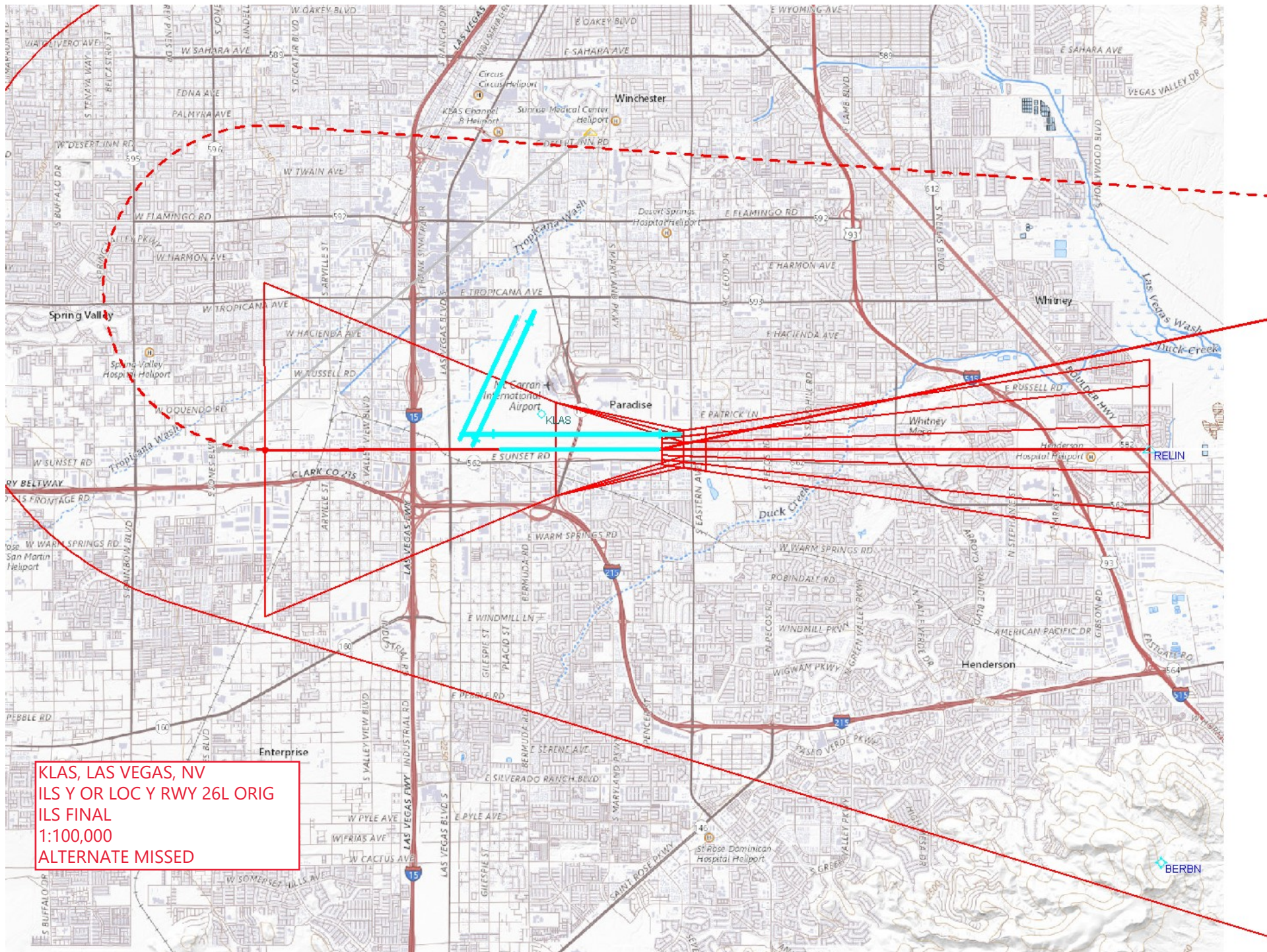


KLAS, LAS VEGAS, NV  
ILS Y OR LOC Y RWY 26L ORIG  
LOC FINAL  
1:100,000

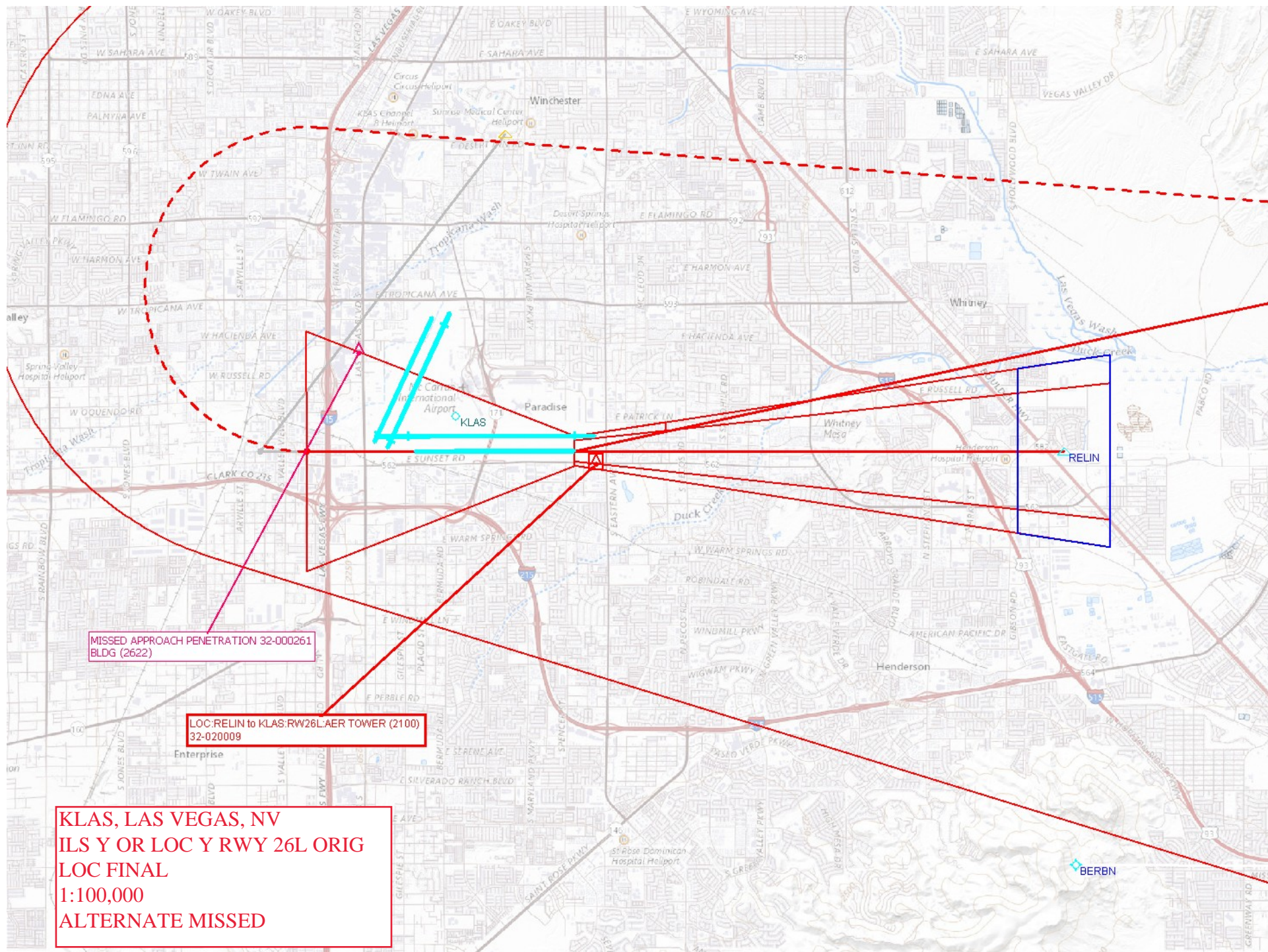
MISSED PENETRATOR , BLDG (2622)  
32-000261

LOC:RELIN to KLAS:RW26L:AER TOWER (2100)  
32-020009





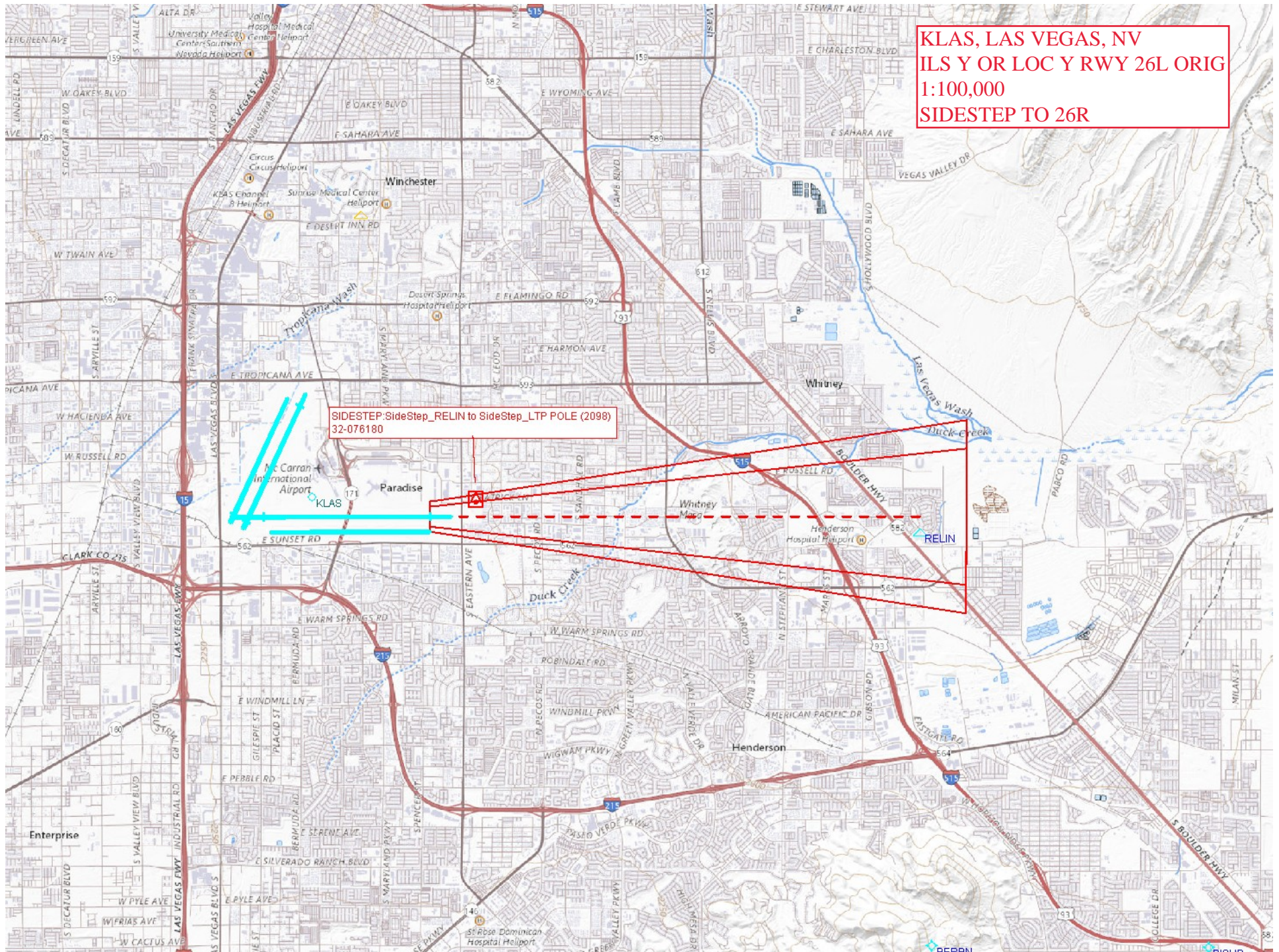






KLAS, LAS VEGAS, NV  
ILS Y OR LOC Y RWY 26L ORIG  
1:100,000  
SIDESTEP TO 26R

SIDESTEP: SideStep\_RELIN to SideStep\_LTP POLE (2098)  
32-076180





KLAS, LAS VEGAS, NV  
ILS Y OR LOC Y RWY 26L ORIG  
1:100,000  
CIRCLING

Circling CAT D MONUMENT (3229)  
32-000188

Circling CAT C BUILDING (2789)  
32-022332

Circling CAT B ANTENNA (2743)  
32-077853

Circling CAT A BUILDING (2720)  
32-023698

