

Flight Procedures Cover Page	Task Action: Abbreviated Amendment	Task Type: IAP	Estimated Chart Date: 11/27/2025	APWS Task ID: 2B957017B0964F4187383347EADAF60D	APWS Project ID: AF127985327F42E2B9E4F750A41E90EE
Procedure: RNAV (GPS) RWY 4R AMDT 0B		Enroute: NO	Specialist: Vega, Ana		Agreement Number:
Airport ID: PHJR			Airport City: KAPOLEI		State: HI
Facility ID:	Facility Type:	Flight Inspection Remark Type:			
<div>Procedure Comments: Processed IAW Technical Support Group (AJF-17) Memo dated 07/07/2021, Subject: Guidance for Procedural Changes Requiring Flight Inspection/Validation.  ACTIVE AIRPORT DATA USED.  CANCELS FDC NOTAM 5/1406  CONTACT: KYLE THOMPSON 405-954-2135</div> <div><div>QUALITY 21 CHECKED</div><div>QUALITY 23 CHECKED</div></div>					

KAPOLEI, HAWAII

AL-761 (FAA)

25107

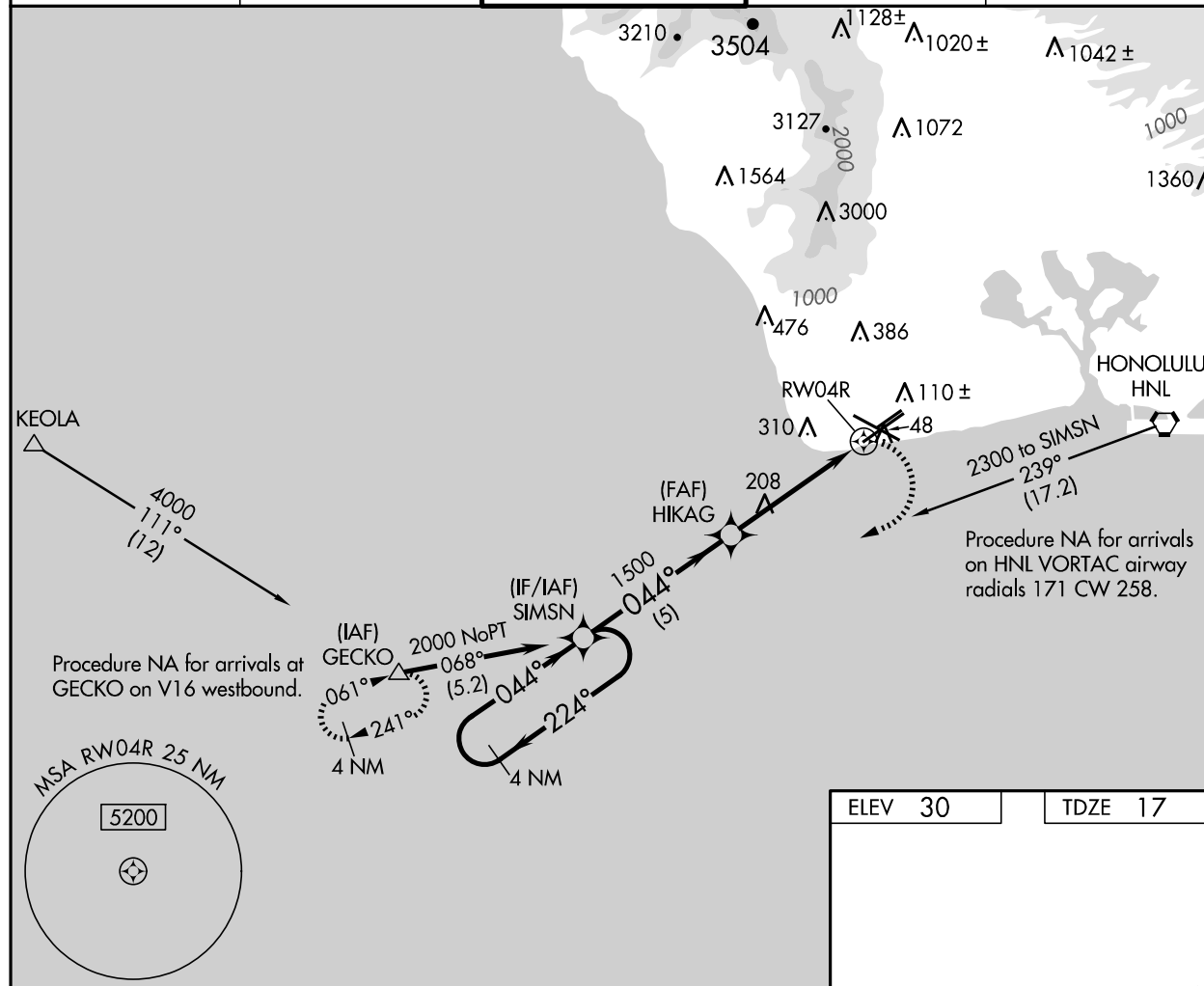
APP CRS	Rwy Idg	7989
044°	TDZE	17
	Apt Elev	30

**ACTIVE**

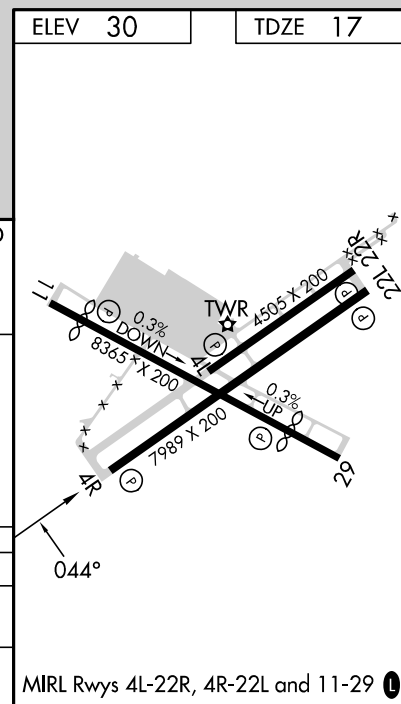
# **RNAV (GPS) RWY 4R** KALAELOA (JOHN RODGERS FLD) (JRF) (PHJR)

<p><b>⚠</b> Circling NA north of Rwy 4R-22L. DME/DME RNP-0.3 NA. When local altimeter setting not received, use Honolulu altimeter setting and increase all MDA 40 feet. For inop MALSR, increase LNAV Cat C/D visibility to 1 3/8 miles. For inop MALSR when using Honolulu altimeter setting increase LNAV Cat C/D visibility to 1 3/8 miles. Helicopter visibility reduction below 1 SM NA. Procedure NA at night.</p>	<p><b>MISSED APPROACH:</b> Climbing right turn to 3000 direct GECKO and hold.</p>
---	---

ATIS <b>119.8</b>	HCF APP CON <b>118.3 269.0</b>	KALAELOA TOWER★ <b>132.6 (CTAF) 340.2</b>	GND CON <b>123.8 336.4</b>	CLNC DEL <b>121.7 380.5</b>
----------------------	-----------------------------------	--	-------------------------------	--------------------------------



4 NM Holding Pattern	SIMSN	3000	GECKO
2000	224°	044°	044°
1500	044°	3.00° TCH 55	RW04R
5 NM	4.5 NM		
CATEGORY	A	B	C
LNAV MDA	460-1	443 (500-1)	
<b>C</b> CIRCLING	520-1 490 (500-1)	520-1 1/2 490 (500-1 1/2)	580-2 550 (600-2)



PAC, 17 APR 2025 to 12 JUN 2025

PAC, 17 APR 2025 to 12 JUN 2025

KAPOLEI, HAWAII  
Orig-A 26MAY16

KALAELOA (JOHN RODGERS FLD) (JRF) (PHJR)  
21°18'N-158°04'W  
**RNAV (GPS) RWY 4R**