

Flight Procedures Cover Page	Task Action: P-NOTAM	Task Type: IAP	Estimated Chart Date: 09/05/2024	APWS Task ID: 2B506481898F43A28CBFABBE7AF4F491	APWS Project ID: 54B8283622EA496E9ECB741819301460
Procedure: VOR/DME RWY 32 AMDT 1D		Enroute: NO	Specialist: Prassada, Parnell		Agreement Number:
Airport ID: KAEX			Airport City: ALEXANDRIA		State: LA
Facility ID:	Facility Type:	Flight Inspection Remark Type:			

Procedure Comments:

ACTIVE DATA USED

P-NOTAM: UPDATED RWY 32 CATS A/B VISIBILITY RVR 5500, AND CAT C 1 1/4.

THIS CANCELS NOTAM 2/6754

PROCESSED IAW TECHNICAL SUPPORT GROUP (AJF-17) MEMO DATED 07/07/2021,
SUBJECT: GUIDANCE FOR PROCEDURAL CHANGES REQUIRING FLIGHT INSPECTION/VALIDATION

CONTACT: ERIC SUSKI WK: (405) 954-7331

4/1430

Digitally signed by
ERIC N SUSKI
Jul 12, 2024

QUALITY
9
CHECKED
BEGUE

QUALITY
32
CHECKED

Digitally signed by
PABLO ORTIZ-JR
Jun 17, 2024

CURRENT

ALEXANDRIA, LOUISIANA

AL-13 (FAA)

23334

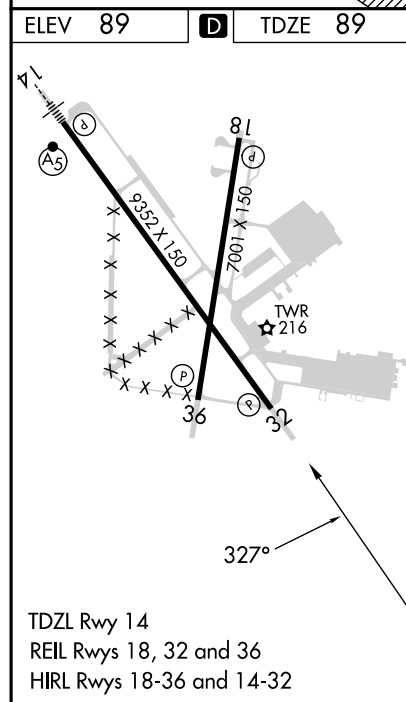
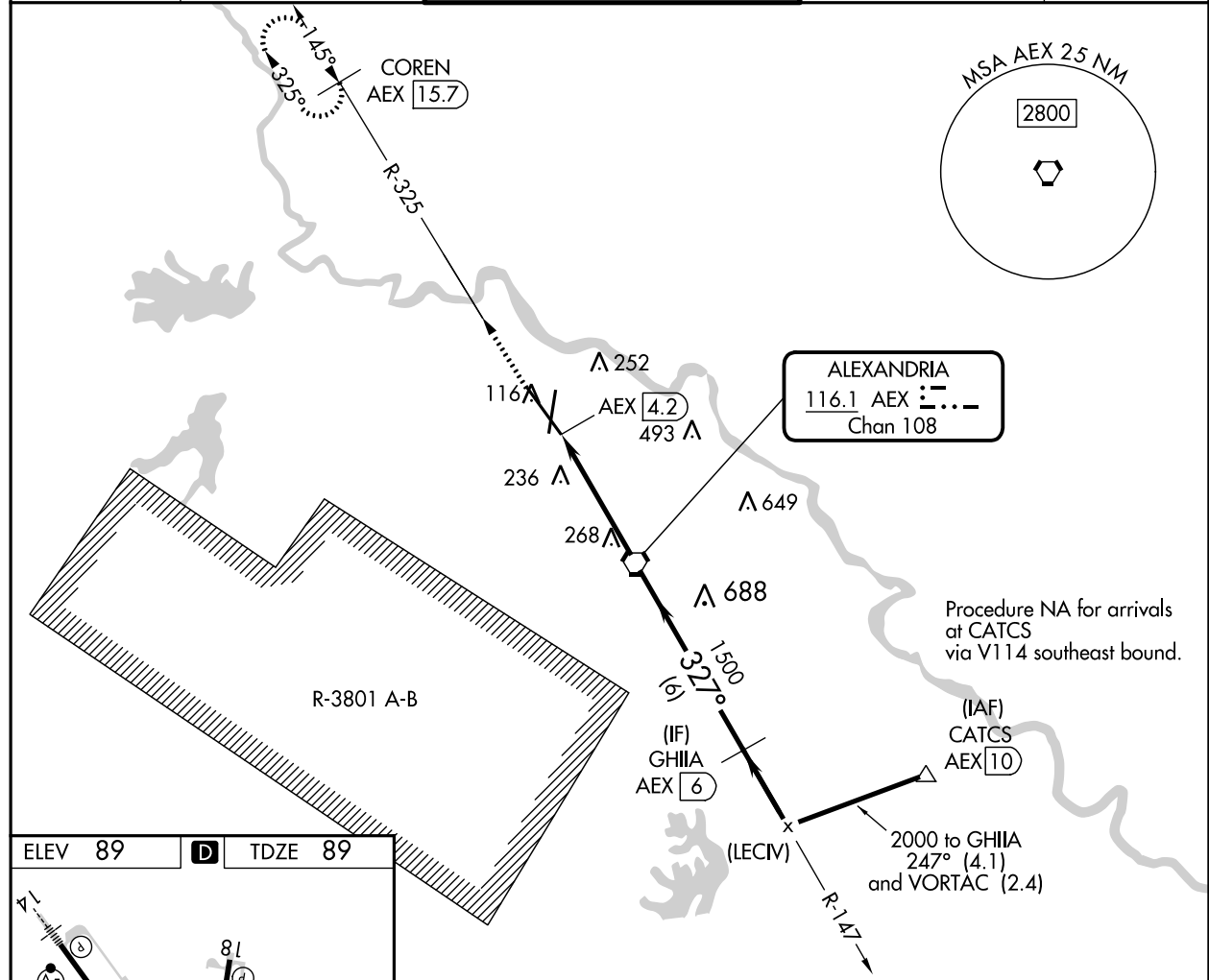
VORTAC AEX 116.1 Chan 108	APP CRS 327°	Rwy Idg TDZE 89 Apt Elev 89
---	------------------------	---

VOR/DME RWY 32

ALEXANDRIA INTL (AEX)

T RADAR required when R-3801 A-B in use.	MISSED APPROACH: Climb to 3000 via AEX R-325 to COREN/AEX 15.7 DME and hold.
A Rwy 32 helicopter visibility reduction below $\frac{3}{4}$ SM NA.	

ASOS 123.975	POLK APP CON 125.4 254.8	ALEXANDRIA TOWER 127.35 (CTAF) 269.2	GND CON 121.9 372.0	CLNC DEL 121.9
------------------------	------------------------------------	---	-------------------------------	--------------------------



3000	COREN AEX 15.7	VGSi and descent angles not coincident (VGSi Angle 3.00/TCH 80).			
AEX R-325		GHIIA AEX 6	(LECIV)	CATCS AEX 10	
	AEX 4.2	AEX 3	AEX VORTAC		
	1.2	3 NM	6 NM	2.4 NM	4.1 NM
	327°	327°	327°	247°	2000
		1500	2000		
		3.06° TCH 55			
					Procedure Turn NA
CATEGORY	A	B	C	D	
S-32	520/50 431 (500-1)		520/60 431 (500-1¼)	520-1½ 431 (500-1½)	
CIRCLING	540-1 451 (500-1)	560-1 471 (500-1)	700-1¾ 611 (700-1¾)	860-2½ 771 (800-2½)	

ALEXANDRIA, LOUISIANA
Amdt 1C 11AUG22

31°20'N-92°33'W

VOR/DME RWY 32

SC-4, 22 FEB 2024 to 21 MAR 2024