

Flight Procedures Cover Page	Task Action: FLIGHT CHECK	Task Type: IAP	Estimated Chart Date: 10/02/2025	APWS Task ID: 2AE57878D59A4B2D9F1B8EF29FEF96DA	APWS Project ID: 88B47DFA0FE342109DC20843FD0821F0
Procedure: ILS OR LOC RWY 3 AMDT 1D		Enroute: NO	Specialist: Cyrus, Theron		Agreement Number:
Airport ID: PHNY			Airport City: LANAI CITY		State: HI
Facility ID: LNY	Facility Type: ILS	Flight Inspection Remark Type: New FC Slot			
<div>Procedure Comments:</div> <div>ACTIVE DATA USED FOR PHNY/RUNWAYS/I-LNY.</div> <div>CANCELS NOTAM FDC 5/1783.</div> <div>CONTACT CASIMIR TABAKA 405 202 7857.</div> <div><div>QUALITY 41 CHECKED</div><div>QUALITY 37 CHECKED</div></div>					

LOC/DME	I-LNY	APP CRS	Rwy Idg	5000
111.1		033°	TDZE	1307
Chan 48			Apt Elev	1308

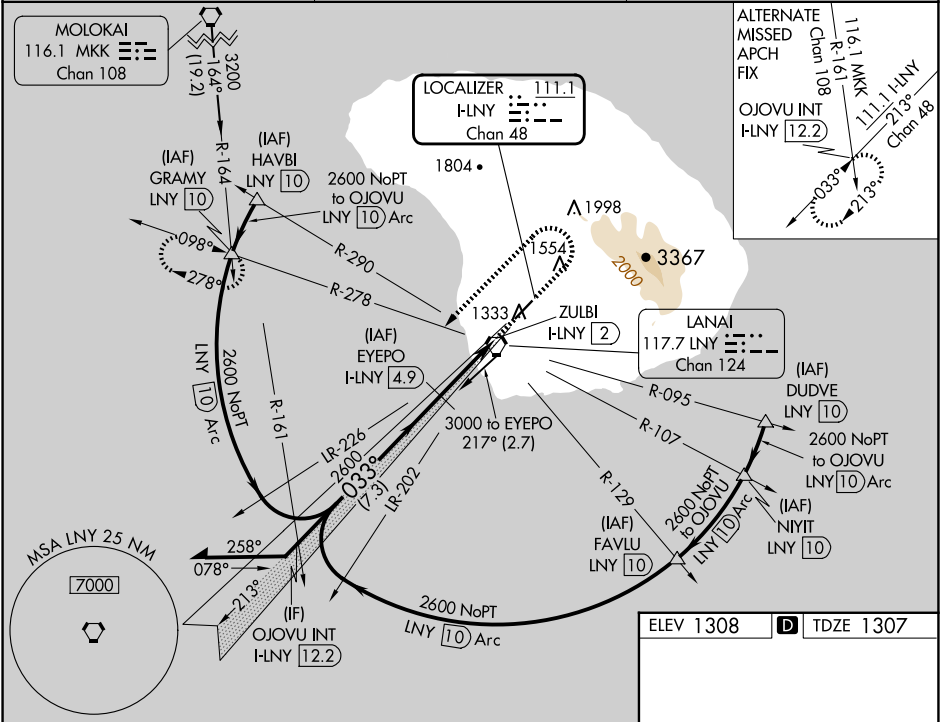
-OLD-

ILS or LOC RWY 3

LANAI (LNY)(PHNY)

DME required.	MISSED APPROACH: Climb to 1800 then climbing left turn to 3500 on heading 224° and LNY VORTAC R-278 to GRAMY INT/LNY VORTAC 10 DME and hold.
NA Circling Rwy 21 NA at night. Autopilot coupled approach NA below 1505. When local altimeter setting not received, procedure NA, except for operators with approved weather reporting service. Circling NA for Cat C southeast of Rwy 3-21.	

AWOS-3P 118.375	HCF CENTER 119.3 307.1	CTAF 122.9 0
--------------------	---------------------------	-----------------



CATEGORY	A	B	C	D
S-ILS 3		1588-1	281 (300-1)	
S-LOC 3		1580-1¼	273 (300-1¼)	
CIRCLING	1900-1¼ 592 (600-1¼)	1940-1¼ 632 (700-1¼)	2140-2½ 832 (900-2½)	NA



