

LANAI CITY, HAWAII

AL-777 (FAA)

FIG

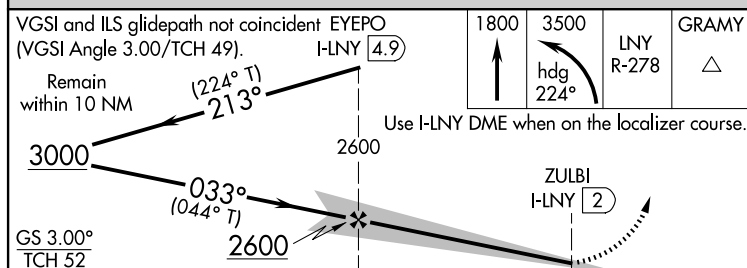
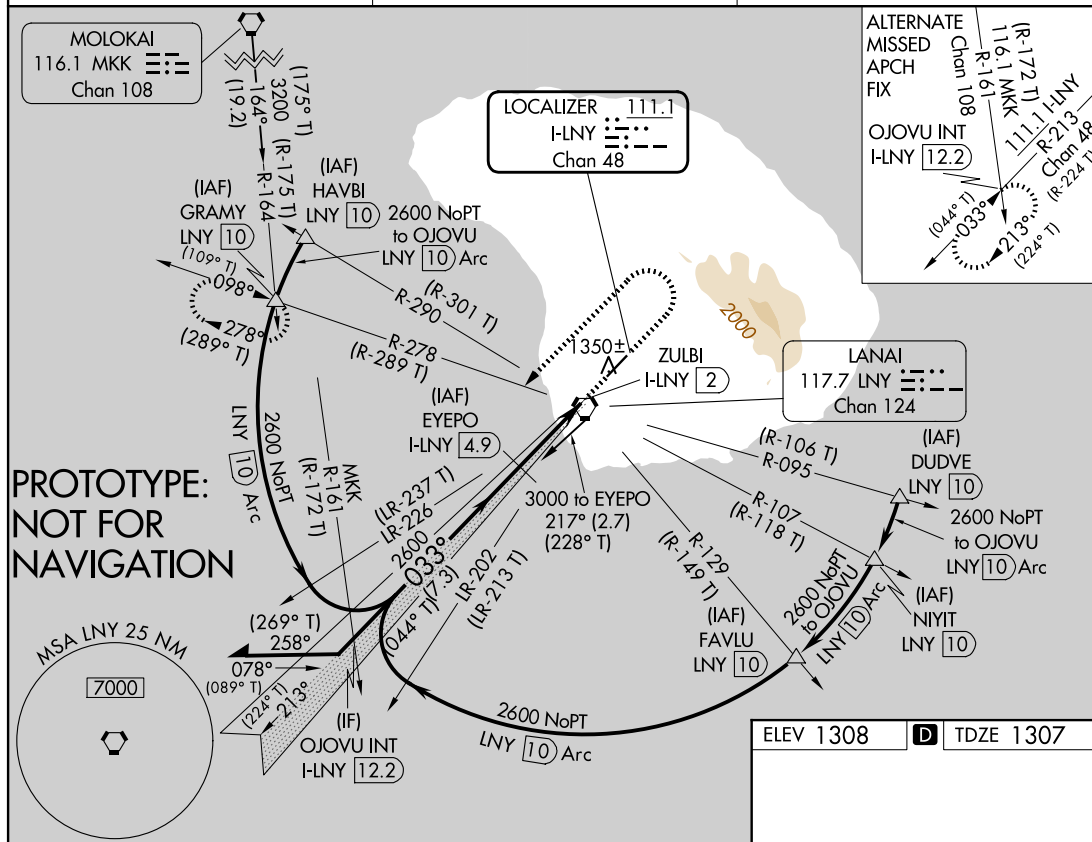
LOC/DME I-LNY	APP CRS	Rwy Ldg	5000
111.1	033°	TDZE	1307
Chan 48		Apt Elev	1308

ILS or LOC RWY 3

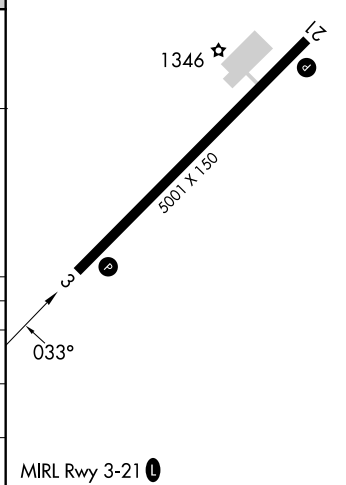
LANAI (LNY)(PHNY)

DME required.	
NA Circling Rwy 21 NA at night. Circling NA for Cat C southeast of Rwy 3-21. Autopilot coupled approach NA below 2300. When local altimeter setting not received, procedure NA, except for operators with approved weather reporting service.	MISSED APPROACH: Climb to 1800 then climbing left turn to 3500 on heading 224° and LNY VORTAC R-278 to GRAMY INT/LNY VORTAC 10 DME and hold.

AWOS-3P 118.375	HCF CENTER 119.3 307.1	CTAF 122.9 0
--------------------	---------------------------	-----------------



CATEGORY	A	B	C	D
S-ILS 3		1588-1	281 (300-1)	
S-LOC 3		1600-1¼	293 (300-1¼)	
CIRCLING	1900-1¼ 592 (600-1¼)	1940-1¼ 632 (700-1¼)	2140-2¾ 832 (900-2¾)	NA



AUTOMATED AL-777 ILS or LOC RWY 3
AUTOMATED AL-777 ILS or LOC RWY 3

PAC
17 JUN 2025
COMPILER: CG
REVIEWER:
DBL CHKR:
EFF: FIG

LANAI CITY, HAWAII

Amdt 1D FIG

20°47'N-156°57'W

LANAI (LNY)(PHNY)
ILS or LOC RWY 3