

Flight Procedures Cover Page	Task Action: FLIGHT CHECK	Task Type: IAP	Estimated Chart Date: 08/10/2023	APWS Task ID: 2A39E0BA65554B789DC22DCDF3AEE2DE	APWS Project ID: F6E83AFC0292421BBFBF37ADA1C02432
Procedure: VOR RWY 13 AMDT 16C		Enroute: NO	Specialist: Dumar, Ralph		Agreement Number:
Airport ID: KTXK			Airport City: TEXARKANA		State: AR
Facility ID:	Facility Type:	Flight Inspection Remark Type: New FC Slot			
<div>Procedure Comments: PENDING AIRPORT DATA USED.</div> <div>REMARKS: T-NOTAM CANX PROJECT. FINAL SEGMENT: NEW CONTROLLING OBSTRUCTION. CONTACT RAKE MCGRAW (405) 954-8711</div> <div>06/15/23: THIS IS A CORRECTED COPY OF THE FORM APPROVED ON 4/19/23. 1 VOR RWY 13: ADDED TDZE 388 2 VOR RWY 13: CHANGED PROFILE NOTE ' VGSI AND RNAV GLIDEPATH NOT COINCIDENT (VGSI ANGLE 3.00/TCH 48)' TO ' VGSI AND DESCENT ANGLES NOT COINCIDENT (VGSI ANGLE 3.00/TCH 48).'</div> <div><div>QUALITY 10 CHECKED</div><div>QUALITY 41 CHECKED</div></div>					

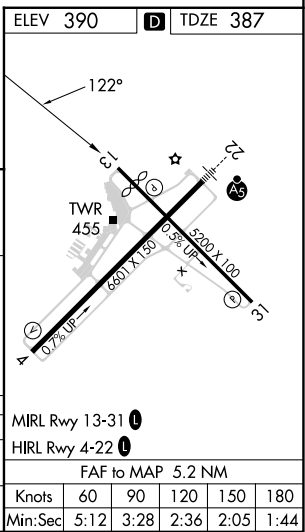
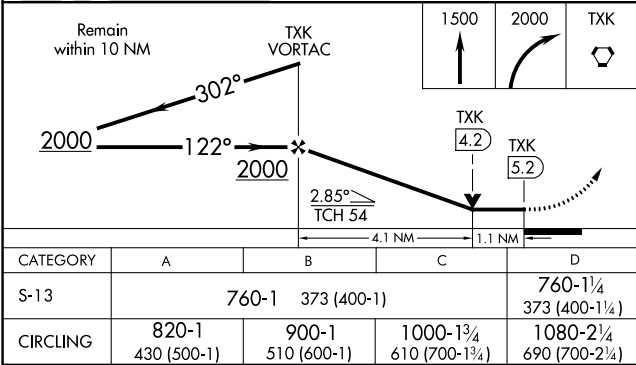
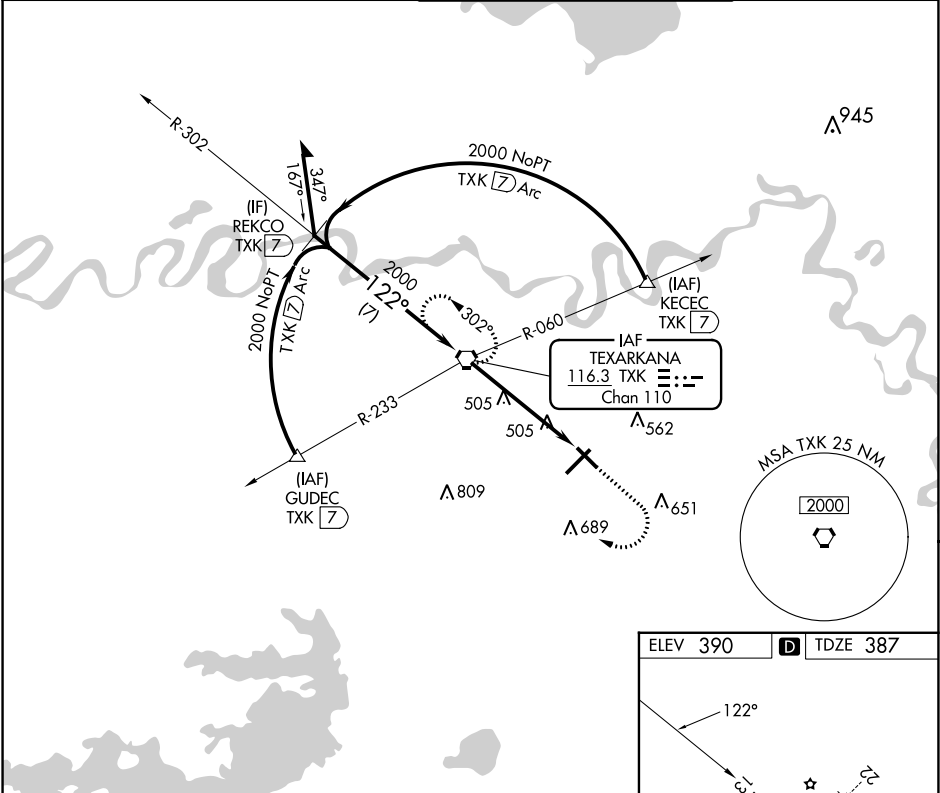
Flight Procedures Cover Page	Task Action: FLIGHT CHECK	Task Type: IAP	Estimated Chart Date: 08/10/2023	APWS Task ID: 2A39E0BA65554B789DC22DCDF3AEE2DE	APWS Project ID: F6E83AFC0292421BBFBF37ADA1C02432
Procedure: VOR RWY 13 AMDT 16C		Enroute: NO	Specialist: Dumar, Ralph		Agreement Number:
Airport ID: KTXK			Airport City: TEXARKANA		State: AR
Facility ID:	Facility Type:	Flight Inspection Remark Type: New FC Slot			
<div>Procedure Comments: PENDING AIRPORT DATA USED.</div> <div>REMARKS: T-NOTAM CANX PROJECT. FINAL SEGMENT: NEW CONTROLLING OBSTRUCTION. CONTACT RAKE MCGRAW (405) 954-8711</div> <div><div>QUALITY 10 CHECKED</div><div>QUALITY 41 CHECKED</div></div>					

[illegible]

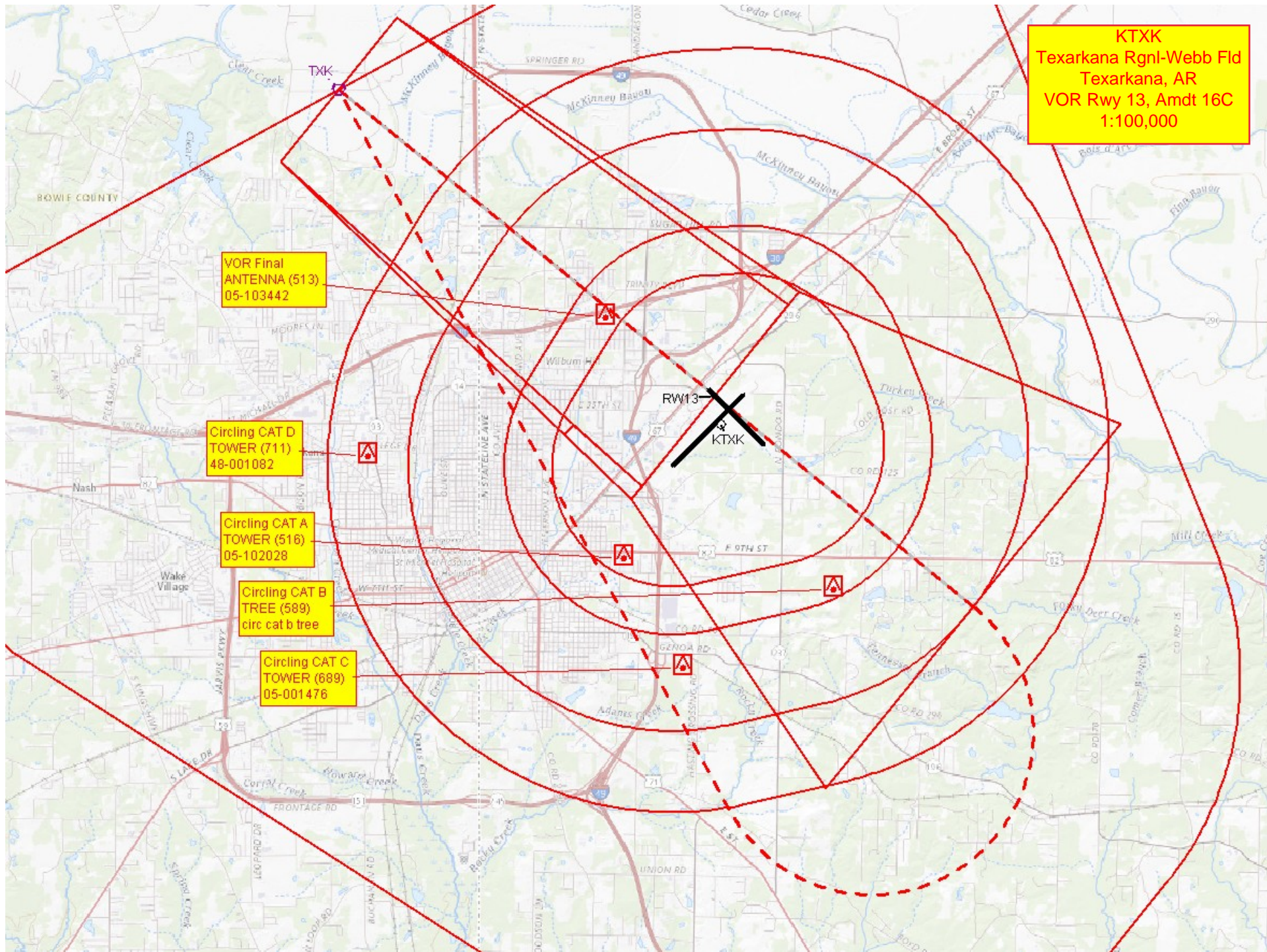
⚠ When local altimeter setting not received, use J Lynn Helms Sevier County alimeter setting and increase all MDA 100 feet, increase S-13 and circling Cat C and D visibility ¼ mile. Visibility reduction by helicopters NA. VDP NA when using J Lynn Helms Sevier County altimeter setting.

MISSED APPROACH: Climb to 1500 then climbing right turn to 2000 direct TXK VORTAC and hold.

ATIS	FORT WORTH CENTER	TEXARKANA TOWER★	GND CON
120.2	123.925 269.475	123.875 (CTAF) 0 235.625	119.225







KTXK  
Texarkana Rgnl-Webb Fld  
Texarkana, AR  
VOR Rwy 13, Amdt 16C  
1:100,000