

Flight Procedures Cover Page	Task Action: FLIGHT CHECK	Task Type: SID	Estimated Chart Date: 02/25/2021	APWS Task ID: 29D733BE295048B68FE89606FF05B21C	APWS Project ID: 4D91E83A5C8A440AA74C99694A83ED8E
Procedure: SID MANCHESTER ONE MANCHESTER NH KMHT		Enroute: YES	Specialist: Grim, Robert		Agreement Number:
Airport ID: KMHT	Airport Name: MANCHESTER		Airport City: MANCHESTER		State: NH
Facility ID:	Facility Type:	Flight Inspection Remark Type: Hold FC Slot			
<p>Procedure Comments: VOR MON - LWM VDME, LEB VDME, EEN VTAC CONTACT INFO: DON LANIER AJV-A431 MANAGER, 405.954.8242</p> <p>05/19/20: THIS IS AN UPDATED COPY OF THE FORM DEVELOPED ON 01/28/20. 1. DELETED LWM VOR/DME, LEB VOR/DME AND EEN VORTAC FROM PROCEDURE - VOR MON.</p> <p>08/17/20: THIS IS A CORRECTED COPY OF THE FORM APPROVED ON 07/27/20. 1. ADDED AIRSPACE DOCKET 19-ANE-8 TO LEB VDME 8260-2. 2. DELETED V141, V151, V496 AND V542 AIRWAYS FROM FIX USE FROM LEB VDME 8260-2 . 3. DELETED EN ROUTE LOW AND CONTROLLER LOW FROM REQUIRED CHARTING ON LEB VDME 8260-2. 4. DELETED V151 AIRWAY FROM FIX USE - LEB VDME VOR MON ON EEN VTAC 8260-2. 5. ADDED AIRSPACE DOCKET # 19-ANE-8 - EEB VTAC 8260-2. 6. DELETED BURLINGTON DP AT KBTX FROM FIX USE - EEN VTAC 8260-2. 7. CHANGED TASK ACTION FOR LEB VDME FROM AMDENDMENT TO CANCELLATION. 8. DELETED PSM VDME AND MHT VDME FROM FIXES AND/OR NAVIADS BLOCK - VOR MON.</p> <p>10/26/20: THIS IS A CORRECTED COPY OF THE FORM APPROVED ON 07/27/20. 1. -2 EEN VORTAC: DELETED LOC/DME RWY 5 AT KVSF FROM FIX USE.</p>					

QUALITY
18
CHECKED

FIPC BASIC FORM							
PROCEDURE: SID MANCHESTER ONE MANCHESTER NH KMHT		AIRPORT NAME: MANCHESTER		AIRPORT ID: KMHT	SPECIAL CONTROL NO: YP-06-010-20		
FAC ID: MANCHESTER1		CITY: MANCHESTER		ST: NH	ORIG CHART DATE: 09/10/2020		
DFL TYPE: PROC/T	THIRD PARTY: <input type="checkbox"/> YES	EST. TIME ON SITE: 0.4	REIMB. NUMBER: AC0721	PTS TASK ID:			
PREFLIGHT NOTES							
REVIEWER:				DATE:			
COMMENTS:				CHECK ONE: <input type="checkbox"/> FLT CK REQ <input type="checkbox"/> NFCR <input type="checkbox"/> REJECT			
						YES	NO
				CPV COMPLETE?		X	
PROCEDURE RESULTS							
INSPECTION DATE: 07/22/2020	CREW #: VN453	N #: N79	INSTRUMENT PROCEDURE STATUS: <input checked="" type="checkbox"/> SAT <input type="checkbox"/> SAT W/CHANGES <input type="checkbox"/> UNSAT		ARINC CODING: <input type="checkbox"/> SAT <input type="checkbox"/> SAT/GOLD <input type="checkbox"/> UNSAT		
FLIGHT INSPECTOR SIGNATURE: galen w collins @ 07/22/2020 13:50			PRINTED NAME: COLLINS, GALEN WESLEY			NOTAM INITIATED? <input type="checkbox"/> YES <input checked="" type="checkbox"/> NO	
FLIGHT INSPECTOR REMARKS: Departure procedure satisfactory as proposed.							
IN-FLIGHT OBSTACLE REPORT							
OBSTRUCTION ID #:	COORDINATES OR LOCATION:	GNSS ALTITUDE (MSL):	BAROMETRIC ALTITUDE (MSL):	HEIGHT ABOVE GROUND LEVEL:			

MANCHESTER ONE DEPARTURE

MANCHESTER (MHT)
MANCHESTER, NEW HAMPSHIRE

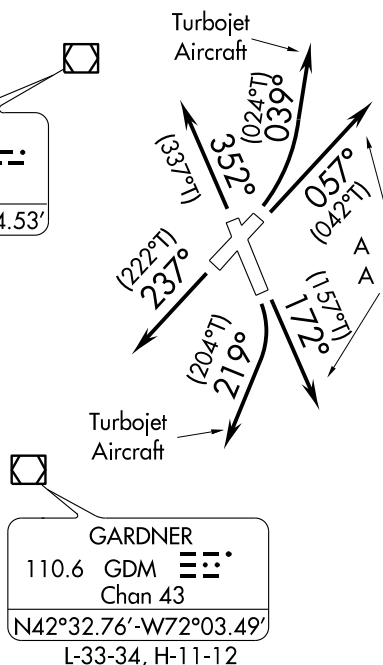
ATIS 119.55
CLNC DEL
135.9
GND CON
121.9
MHT TOWER
121.3 239.025
BOS DEP CON
124.9 269.075

NOTE: RADAR required.

TOP ALTITUDE:
3000

CAMBRIDGE
115.0 CAM
Chan 97
N42°59.66'-W73°20.64'
L-32-34, H-11-12

CONCORD
112.9 CON
Chan 76
N43°13.19'-W71°34.53'
L-32



KENNEBUNK
117.1 ENE
Chan 118
N43°25.54'-W70°36.81'
32 1-12

BOSTON
112.7 BOS
Chan 74
N42°21.45'-W70°59.37'
L-33-34, H-10-11-12

**PROTOTYPE-NOT
FOR NAVIGATION**

TAKEOFF MINIMUMS:

Rwy 6: Standard.

Rwy 17: 300-1½ or Standard with minimum climb of 270' per NM to 600.

Rwy 24: Standard with minimum climb of 335' per NM to 800.

Rwy 35: 300-1½ or Standard with minimum climb of 265' per NM to 1400.

NOTE: Chart not to scale.



DEPARTURE ROUTE DESCRIPTION

TAKEOFF RUNWAY 6: TURBOJET AIRCRAFT - Climbing left turn heading 039°, thence

ALL OTHER AIRCRAFT - Climb on heading 057° or as assigned by ATC, thence

TAKEOFF RUNWAY 17: TURBOJET AIRCRAFT - Climbing right turn heading 219°, thence

ALL OTHER AIRCRAFT - Climb on heading 172° or as assigned by ATC, thence

TAKEOFF RUNWAY 24: Climb on heading 237° or as assigned by ATC, thenceTAKEOFF RUNWAY 35: Climb on heading 352° or as assigned by ATC, thence

. . . . expect vectors to assigned Route/Navaid/Fix. Maintain 3000 or as assigned by ATC.
Expect clearance to filed altitude/flight level within five (5) minutes after departure.

MANCHESTER ONE DEPARTURE

MANCHESTER, NEW HAMPSHIRE
MANCHESTER (MHT)

EXISTING

AL-246 (FAA)

19171

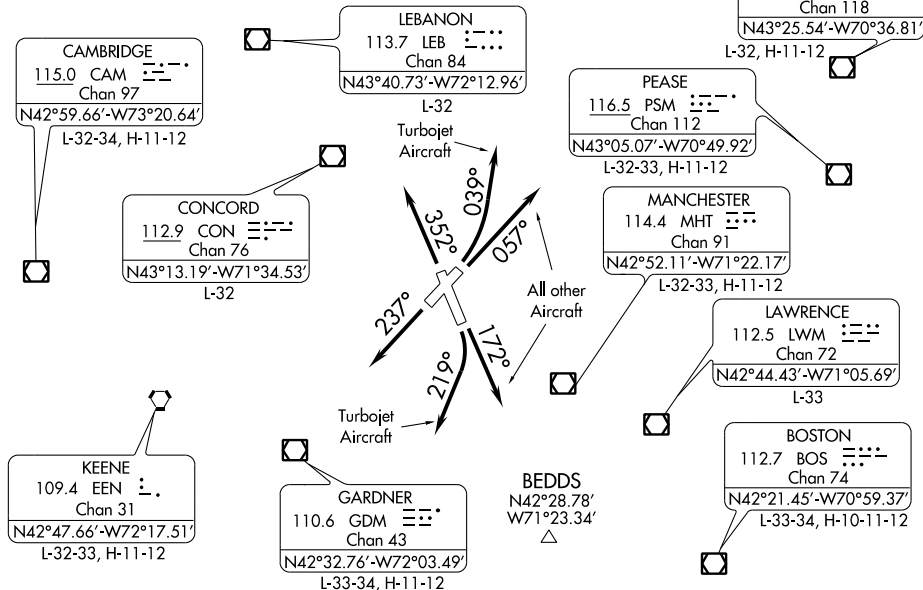
MANCHESTER NINE DEPARTURE

MANCHESTER (MHT)
MANCHESTER, NEW HAMPSHIRE

ATIS 119.55
CLNC DEL
135.9
GND CON
121.9
MANCHESTER TOWER
121.3 239.025
BOSTON DEP CON
124.9 269.075

NOTE: RADAR required.

TOP ALTITUDE:
3000



TAKEOFF MINIMUMS:

Rwy 6: Standard with minimum climb of 206' per NM to 1000,
or alternatively, with Standard takeoff minimums and a normal
200' per NM climb gradient, takeoff must occur no later than 1900' prior to DER.
Rwy 17: 300-1¼ or Standard with minimum climb of 277' per NM to 600.
Rwy 24: Standard with minimum climb of 321' per NM to 1200.
Rwy 35: Standard with minimum climb of 253' per NM to 2000.

NOTE: Chart not to scale.

DEPARTURE ROUTE DESCRIPTION

TAKEOFF RUNWAY 6: TURBOJET AIRCRAFT - Climbing left turn heading 039°, thence

ALL OTHER AIRCRAFT - Climb heading 057° or as assigned by ATC, thence

TAKEOFF RUNWAY 17: TURBOJET AIRCRAFT - Climbing right turn heading 219°, thence

ALL OTHER AIRCRAFT - Climb heading 172° or as assigned by ATC, thence

TAKEOFF RUNWAY 24: Climb heading 237° or as assigned by ATC, thence

TAKEOFF RUNWAY 35: Climb heading 352° or as assigned by ATC, thence

. . . . expect vectors to assigned Route/Navaid/Fix. Maintain 3000 or as assigned by ATC.
Expect clearance to filed altitude/flight level within five (5) minutes after departure.

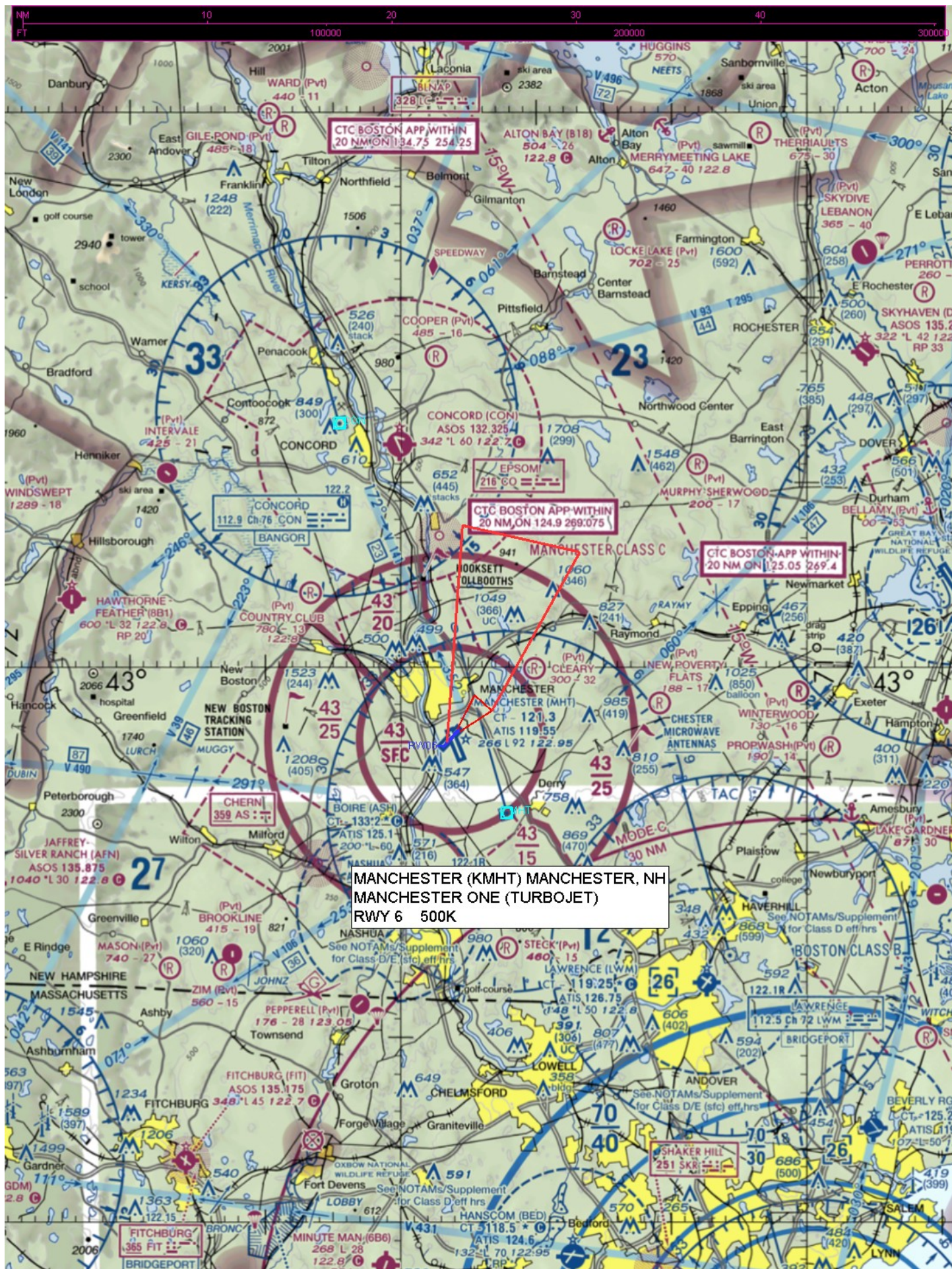
MANCHESTER NINE DEPARTURE

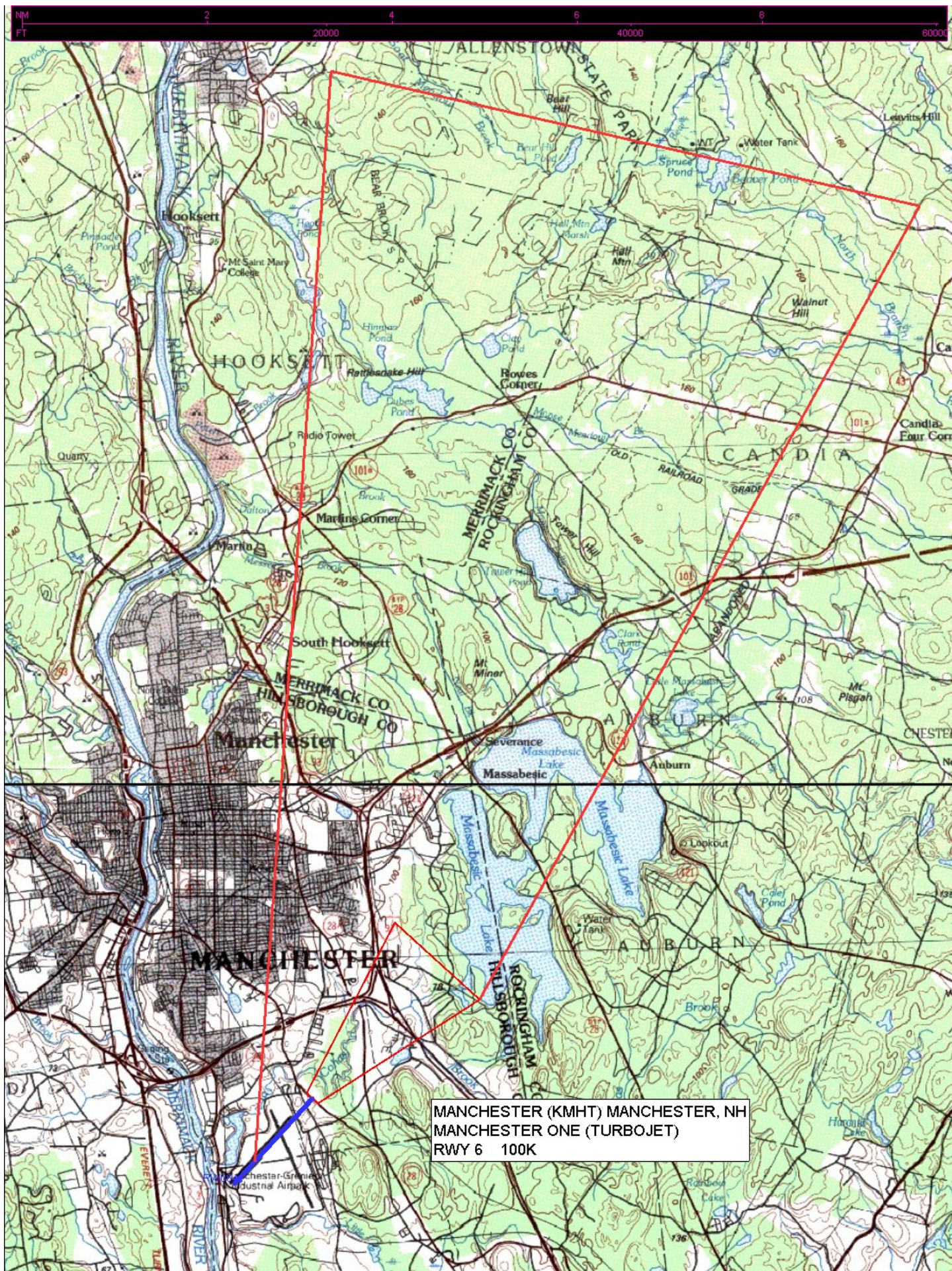
MANCHESTER, NEW HAMPSHIRE
MANCHESTER (MHT)

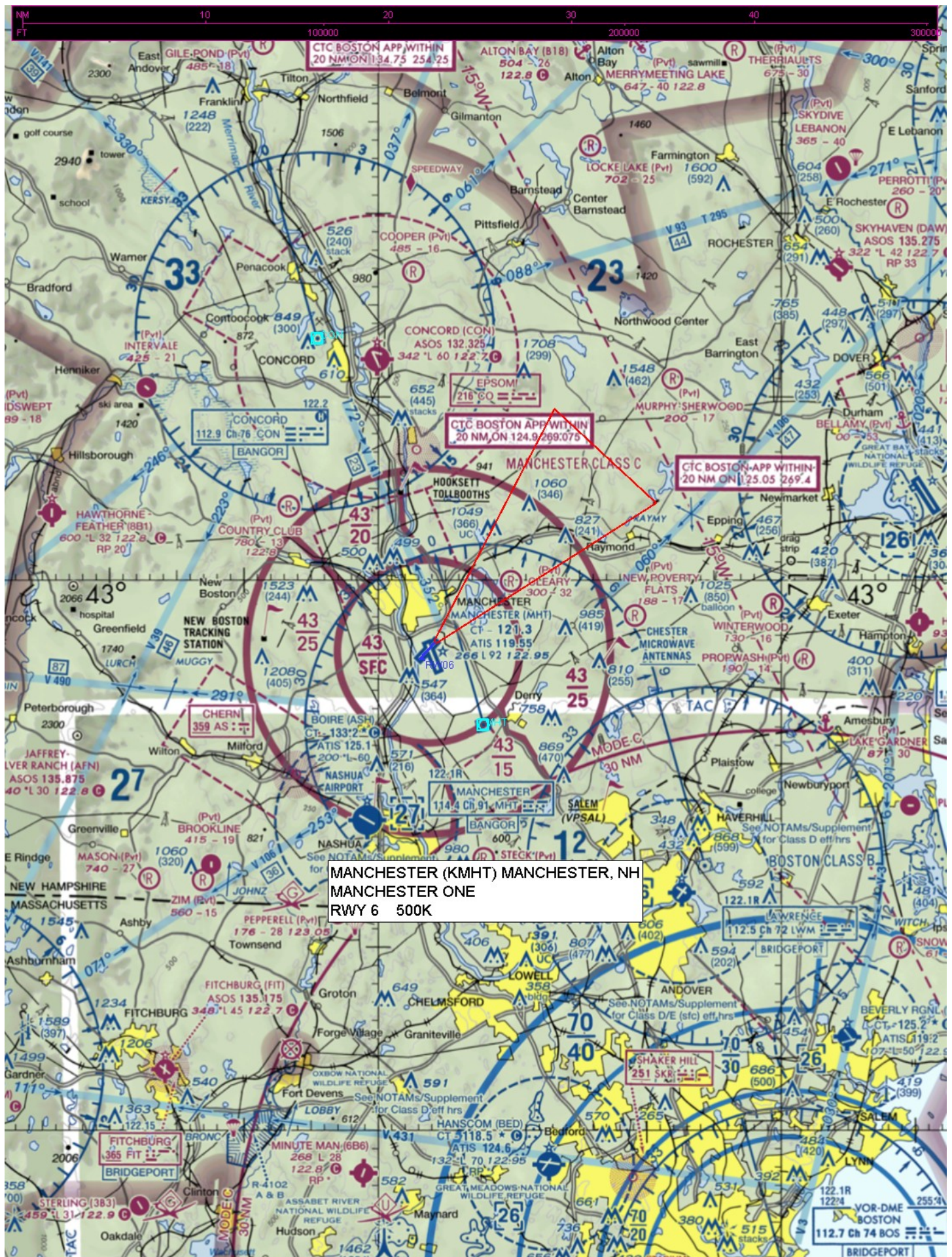
17AUG17

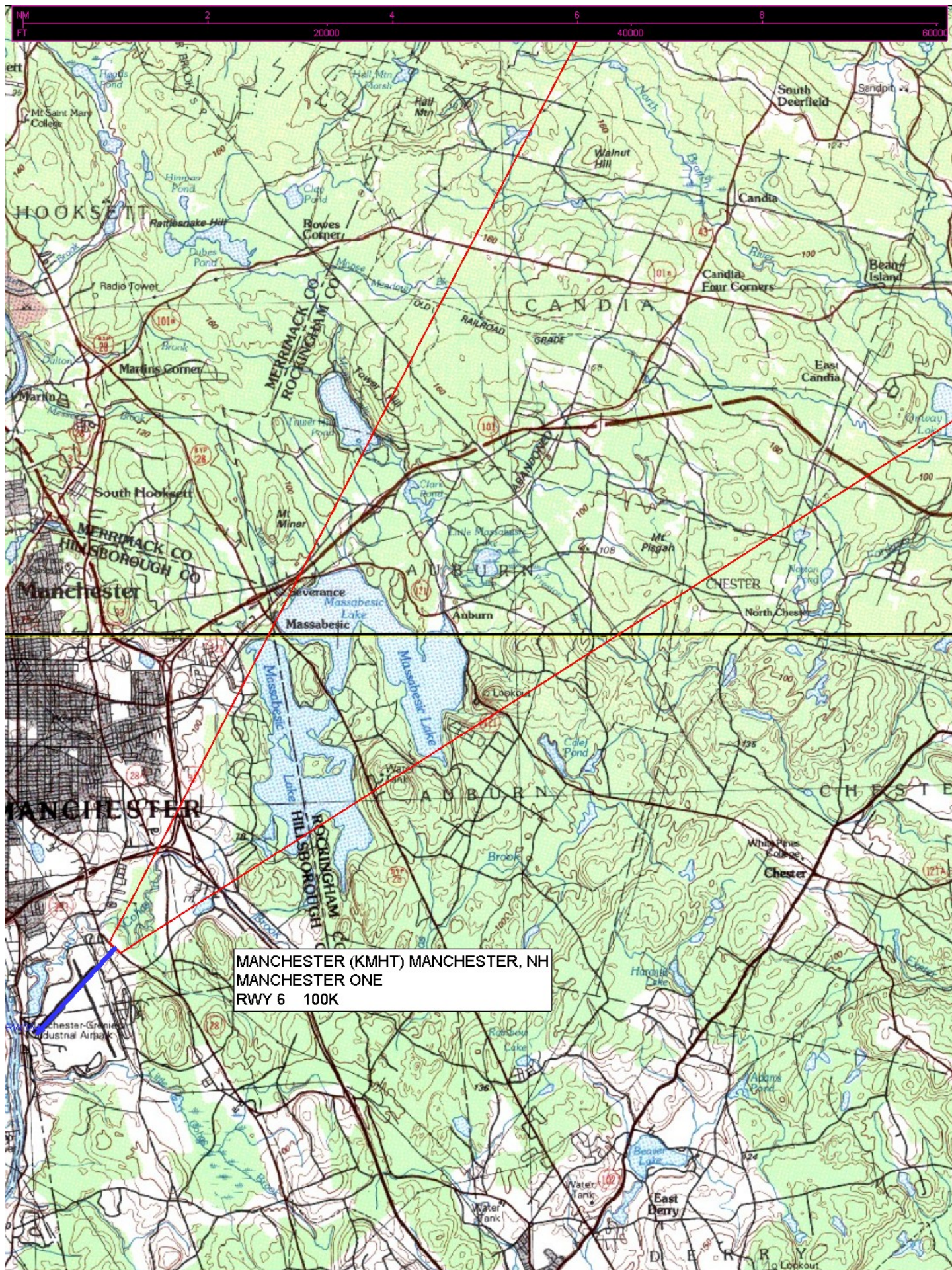
NE-1, 02 JAN 2020 to 30 JAN 2020

NE-1, 02 JAN 2020 to 30 JAN 2020









MANCHESTER (KMHT) MANCHESTER, NH
MANCHESTER ONE
RWY 6 100K



