

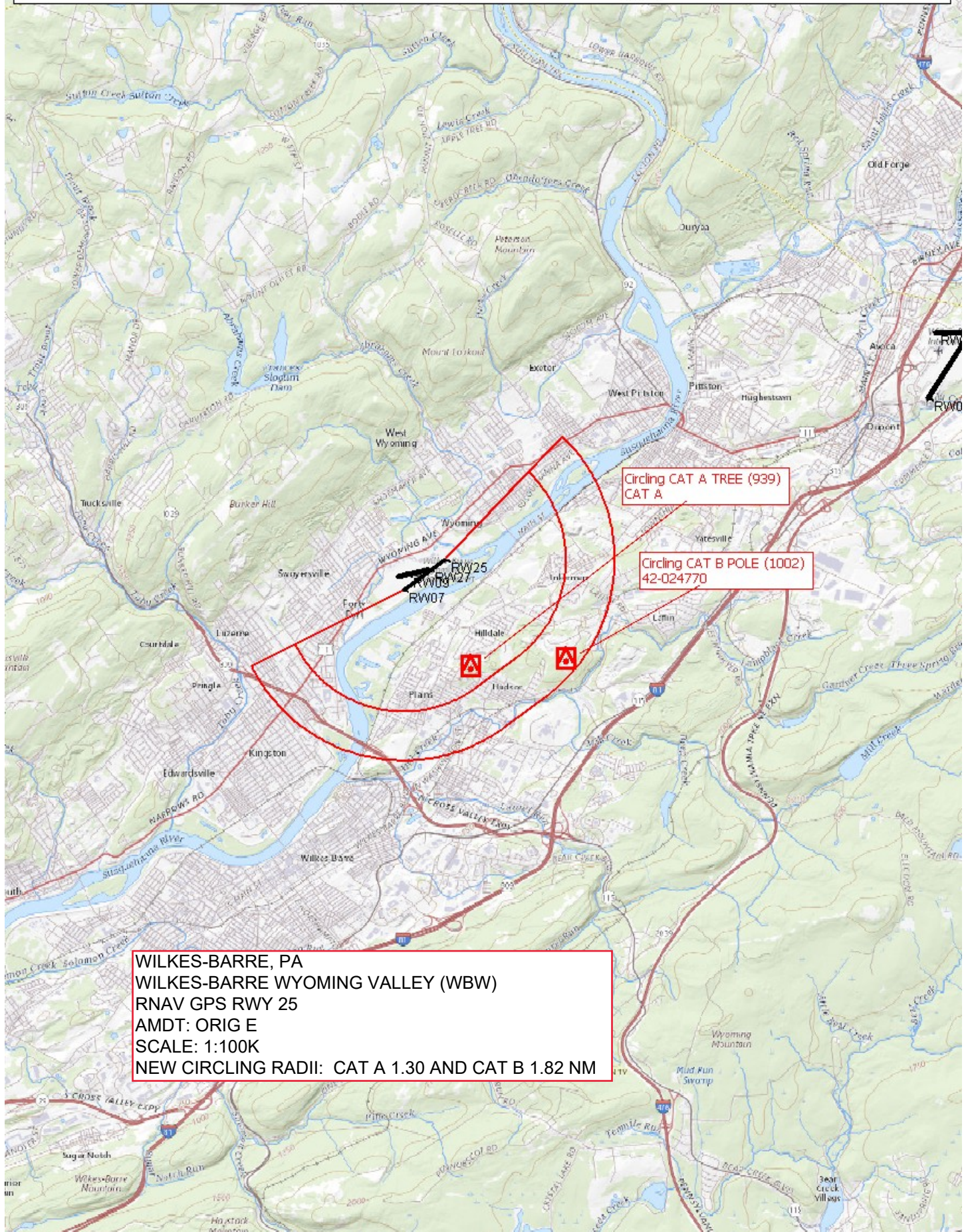
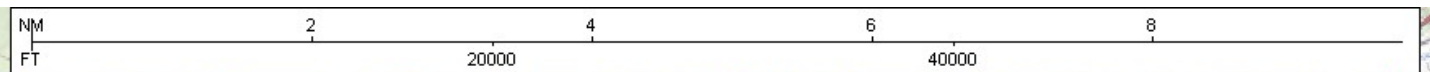


Flight Procedures Cover Page	Task Action: P-NOTAM	Task Type: IAP	Estimated Chart Date: 07/14/2022	APWS Task ID: 037450C01B624A42BCAEA79A1A2D99F6	APWS Project ID: 2BFFB38C6BBF4D16B07939A1C8F2654B
Procedure: RNAV (GPS) RWY 7 AMDT 0D		Enroute: NO	Specialist: Marsh, Andre		Agreement Number:
Airport ID: KWBW		Airport City: WILKES-BARRE		State: PA	
Facility ID:	Facility Type:	Flight Inspection Remark Type:			
<p>Procedure Comments: P-NOTAM CIRCLING RADII INCREASE CONTACT JASON KRETSCHMER, AJV-A421, 405-954-4019</p> <p style="text-align: center;"><i>Digitally signed by</i> JASON KRETSCHMER May 10, 2022</p> <div style="text-align: right;">   </div>					



WAAS CH 45824 W25A	APP CRS 246°	Rwy Idg TDZE 543 Apt Elev 543	3375 543 543
--	------------------------	---	---

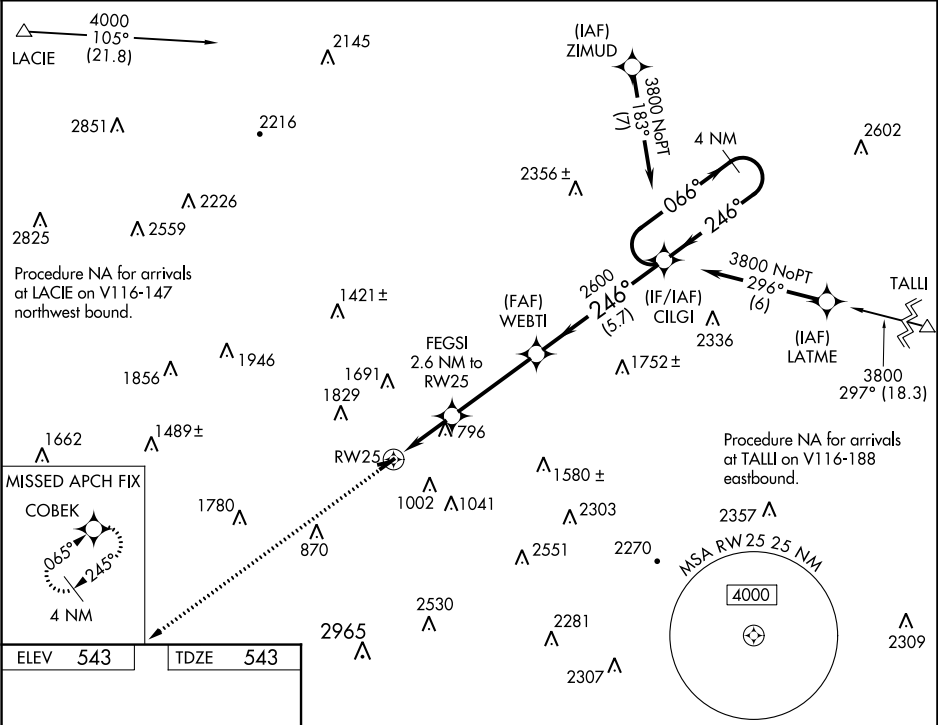
OLD

RNAV (GPS) RWY 25

WILKES-BARRE WYOMING VALLEY (WBW)

RNP APCH.	<p>⚠ Circling NA to Rwy 9 and 27. Rwy 25 helicopter visibility reduction below 1 SM NA. Baro-VNAV NA. Use Wilkes-Barre/Scranton altimeter setting. Circling Rwy 7 NA at night. Circling NA NW of Rwy 7-25. Procedure NA at night.</p>	MISSED APPROACH: Climb to 3700 direct COBEK and hold.
-----------	---	--

AVP ASOS 111.6	WILKES-BARRE APP CON 126.3 256.7	UNICOM 122.8 (CTAF) 0
--------------------------	--	---------------------------------



ELEV **543**

TDZE **543**

3700

COBEK

VGSI and RNAV glidepath not coincident (VGSI Angle 3.75/TCH 40).

4 NM

Holding Pattern

246° to RW25

21930 X 100

3375 X 75

*LNAV only

RW25

FEGSI 2.6 NM to RW25

1400*

2.6 NM

3.7 NM

5.7 NM

WEBTI 2600

CILGI

066°

246°

3800

GP 3.00° TCH 40

CATEGORY	A	B	C	D
LPV DA	1063-1½	520 (600-1½)	NA	
LNAV/VNAV DA	1184-2¼	641 (700-2¼)	NA	
LNAV MDA	1240-1	697 (700-1)	NA	
CIRCLING	1280-1 737 (800-1)	1380-1¼ 837 (900-1¼)	NA	