

Flight Procedures Cover Page	Task Action: P-NOTAM	Task Type: IAP	Estimated Chart Date: 06/17/2021	APWS Task ID: 28F3E3E0568C493DAF03A737912F18C9	APWS Project ID: 106EF0789C304C4FA8BCAE0FF3125A1E
Procedure: VOR-A AMDT 15B		Enroute: NO	Specialist: Lafferty, James		Agreement Number:
Airport ID: KIRK			Airport City: KIRKSVILLE		State: MO
Facility ID:	Facility Type:	Flight Inspection Remark Type:			
<div> <div>Procedure Comments:</div> <div> P-NOTAM   This Cancels FDC 0/6087   Order 8260.3, chapter 2, New Circling Criteria Applied   Contact Dave Teffeteller at 202-267-5177 </div> </div> <div> <div>QUALITY</div> <div>45</div> <div>CHECKED</div> </div>					

VORTAC IRK	Rwy Idg	N/A
<b>114.6</b>	TDZE	N/A
Chan <b>93</b>	Apt Elev	<b>966</b>

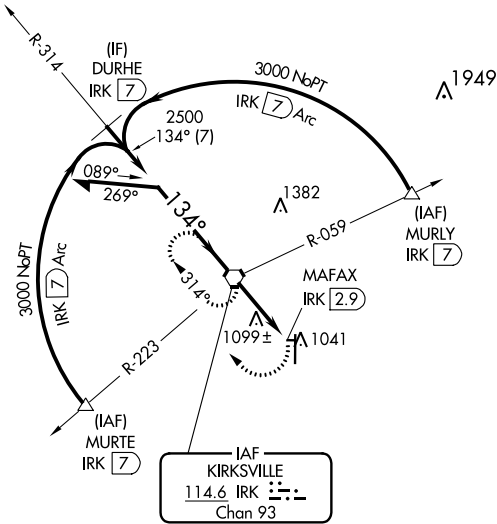
APP CRS  
**134°**

OLD

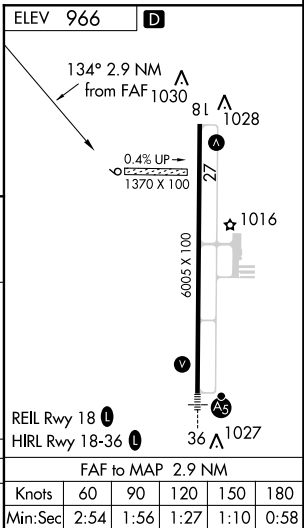
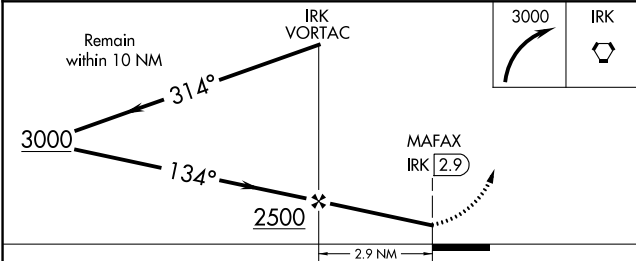
VOR-A  
KIRKSVILLE RGNL (IRK)

<b>▼</b> Circling NA to Rwys 9 and 27.	MISSED APPROACH: Climbing right turn to 3000 direct IRK VORTAC and hold, continue climb-in-hold to 3000.
-------------------------------------------	----------------------------------------------------------------------------------------------------------

ASOS <b>121.125</b>	KANSAS CITY CENTER <b>132.6 370.9</b>	UNICOM <b>122.8 (CTAF) 0</b>
------------------------	------------------------------------------	---------------------------------



NoPT for arrivals at IRK VORTAC on airway radials 259 CW 007.



CATEGORY	A	B	C	D	FAF to MAP 2.9 NM					
CIRCLING	1400-1 434 (500-1)	1420-1 454 (500-1)	1420-1½ 454 (500-1½)	1520-2 554 (600-2)	Knots	60	90	120	150	180
					Min:Sec	2:54	1:56	1:27	1:10	0:58



AIRPORT ID: KIRK  
NAME: KIRKSVILLE RGNL  
CITY:KIRKSVILLE  
STATE: MISSOURI  
PROC: VOR-A  
AMDT : 15B  
NEW CIRCLING AREAS  
SCALE 1:100,000

