

Flight Procedures Cover Page	Task Action: FLIGHT CHECK	Task Type: SID	Estimated Chart Date: 11/05/2020	APWS Task ID: 28C31AE4B8C5408298C4873396DC4C7A	APWS Project ID: 71890CA284604C0BBA77E6F6E0DE6317
Procedure: SID O'HARE SIX CHICAGO IL KORD		Enroute: NO	Specialist: Vega, Ana		Agreement Number:
Airport ID: KORD	Airport Name: CHICAGO O'HARE INTL		Airport City: CHICAGO		State: IL
Facility ID:	Facility Type:	Flight Inspection Remark Type: New FC Slot			
<div>Procedure Comments:</div> <div>MAJOR AMENDMENT.</div> <div>ADD NEW RUNWAYS 9C AND 27C.</div> <div>PENDING DATA USED FOR RWYS 09C AND 27C. OTHER RUNWAYS USED ACTIVE DATA.</div> <div>CONTAC JOHN BORDY 405-954-0980.</div> <div>DNC</div> <div>QUALITY 26 CHECKED</div> <div>QUALITY 3 CHECKED</div>					

FIPC BASIC FORM							
PROCEDURE: SID O'HARE SIX CHICAGO IL KORD			AIRPORT NAME: CHICAGO O'HARE INTL		AIRPORT ID: KORD	SPECIAL CONTROL NO: BP-07-167-20	
FAC ID: OHARE6		CITY: CHICAGO			ST: IL	ORIG CHART DATE: 11/05/2020	
DFL TYPE: PROC/T	THIRD PARTY: <input type="checkbox"/> YES	EST. TIME ON SITE: 0.4	REIMB. NUMBER:		PTS TASK ID:		
PREFLIGHT NOTES							
REVIEWER: scott wiebe					DATE: 09/05/2020		
COMMENTS:					CHECK ONE:		
					<input checked="" type="checkbox"/> FLT CK REQ <input type="checkbox"/> NFCR <input type="checkbox"/> REJECT		
							YES
					CPV COMPLETE?		X
PROCEDURE RESULTS							
INSPECTION DATE: 09/05/2020		CREW #: VN219	N #: N77	INSTRUMENT PROCEDURE STATUS: <input checked="" type="checkbox"/> SAT <input type="checkbox"/> SAT W/CHANGES <input type="checkbox"/> UNSAT		ARINC CODING: <input type="checkbox"/> SAT <input type="checkbox"/> SAT/GOLD <input type="checkbox"/> UNSAT	
FLIGHT INSPECTOR SIGNATURE: scott wiebe @ 09/05/2020 16:21			PRINTED NAME: WIEBE, GREGORY SCOTT				NOTAM INITIATED? <input type="checkbox"/> YES <input checked="" type="checkbox"/> NO
FLIGHT INSPECTOR REMARKS:							
IN-FLIGHT OBSTACLE REPORT							
OBSTRUCTION ID #:	COORDINATES OR LOCATION:		GNSS ALTITUDE (MSL):		BAROMETRIC ALTITUDE (MSL):		HEIGHT ABOVE GROUND LEVEL:

FIPC BASIC FORM						
PROCEDURE: SID O'HARE SIX CHICAGO IL KORD			AIRPORT NAME: CHICAGO O'HARE INTL		AIRPORT ID: KORD	SPECIAL CONTROL NO: BP-07-167-20
FAC ID: OHARE6		CITY: CHICAGO			ST: IL	ORIG CHART DATE: 11/05/2020
DFL TYPE: PROC/T	THIRD PARTY: <input type="checkbox"/> YES	EST. TIME ON SITE: 0.4	REIMB. NUMBER:	PTS TASK ID:		
PREFLIGHT NOTES						
REVIEWER: scott wiebe					DATE: 09/05/2020	
COMMENTS:					CHECK ONE: <input checked="" type="checkbox"/> FLT CK REQ <input type="checkbox"/> NFCR <input type="checkbox"/> REJECT	
					<div style="display: flex; justify-content: space-between;"> YES NO </div>	
					CPV COMPLETE? <div style="display: flex; justify-content: space-between;"> X </div>	
PROCEDURE RESULTS						
INSPECTION DATE: 09/05/2020	CREW #: VN219	N #: N77	INSTRUMENT PROCEDURE STATUS: <input checked="" type="checkbox"/> SAT <input type="checkbox"/> SAT W/CHANGES <input type="checkbox"/> UNSAT		ARINC CODING: <input type="checkbox"/> SAT <input type="checkbox"/> SAT/GOLD <input type="checkbox"/> UNSAT	
FLIGHT INSPECTOR SIGNATURE: scott wiebe @ 09/05/2020 16:21			PRINTED NAME: WIEBE, GREGORY SCOTT			NOTAM INITIATED? <input type="checkbox"/> YES <input checked="" type="checkbox"/> NO
FLIGHT INSPECTOR REMARKS:						
IN-FLIGHT OBSTACLE REPORT						
OBSTRUCTION ID #:	COORDINATES OR LOCATION:	GNSS ALTITUDE (MSL):	BAROMETRIC ALTITUDE (MSL):	HEIGHT ABOVE GROUND LEVEL:		

**TOP ALTITUDE:
5000**

SPECIAL INSTRUCTIONS: For appropriate departure control frequency, see graphic. Use frequency depicted within the sector where first navaid/fix for your route is located (sectors indicated by dashed lines; frequencies in dashed box within).

BADGER
116.4 BAE
Chan 111
N43°07.01'-W88°17.06'
L-28, H-5

NOTE: All turbo-jet departures in all directions, maintain 250K until advised by ATC.

CLNC DEL
121.6
CPDLC

**CHICAGO DEP CON
WEST**
126.625 327.075

DUPAGE
108.4 DPA
Chan 21
N41°53.42'
W88°21.01'
L-28

MYKIE
N42°09.80'
W88°48.51'
L-28, H-5

CHICAGO
Chan 19 (Y)
GCO
(108.25)
N41°59.65'
W87°54.14'

ALL DME
Equipped Aircraft
Cross 4000

RAYNR
N42°18.66'
W87°49.55'
H-5

PETTY
N42°49.64'
W87°38.04'
L-28

**CHICAGO DEP CON
EAST/NORTH**
125.0 337.4

KEELER
116.6 ELX
Chan 113
N42°08.66'
W86°07.36'
L-28, H-5-10

EBAKE
N42°16.76'
W87°03.80'
L-28

DUFEE
N42°06.75'
W87°03.80'
L-28

IOWA CITY
116.2 IOW
Chan 109
N41°31.14'
W91°36.80'
L-28, H-5

POLO
111.2 PLL
Chan 49
N41°57.94'
W89°31.45'
L-28

NOONY
N42°02.80'
W88°48.51'
L-28, H-5

SIMMN
N41°58.84'
W88°52.71'
L-28

PEKUE
N41°47.79'
W88°48.51'
L-28, H-5

OLINN
N41°54.80'
W88°48.51'
L-28, H-5

BACEN
N41°24.40'
W88°01.78'
H-5

EARND
N41°25.52'
W87°34.33'
H-5

MOBLE
N41°56.73'
W87°03.80'
L-28

GIPPER
115.4 GIJ
Chan 101
N41°46.12'-W86°19.11'
L-28, H-5-10

**PROTOTYPE-NOT
FOR NAVIGATION**

NOTE: RADAR required.
NOTE: Chart not to scale.

TAKEOFF MINIMUMS

Rwys 4L/R, 9L/C/R, 10L/C/R, 22L, 27L, 28C/R: Standard.

Rwy 22R: NA - ATC

Rwy 27C: Standard with minimum climb of 220' per NM to 1800.

Rwy 27R: Standard with minimum climb of 220' per NM to 1700.

Rwy 28L: Standard with minimum climb of 210' per NM to 900, or alternatively, with standard takeoff minimums and a normal 200' per NM climb gradient, takeoff must occur no later than 1300' prior to DER.

ROBERTS
116.8 RB5
Chan 115
N40°34.90'-W88°09.86'
L-27, H-5

**CHICAGO DEP CON
SOUTH**
126.625 327.075

CMSKY
N41°24.78'
W87°52.63'
H-5

DENNT
N41°25.15'
W87°43.48'
H-5

PEOTONE
113.2 EON
Chan 79
N41°16.18'-W87°47.46'
L-28

(NARRATIVE ON FOLLOWING PAGE)

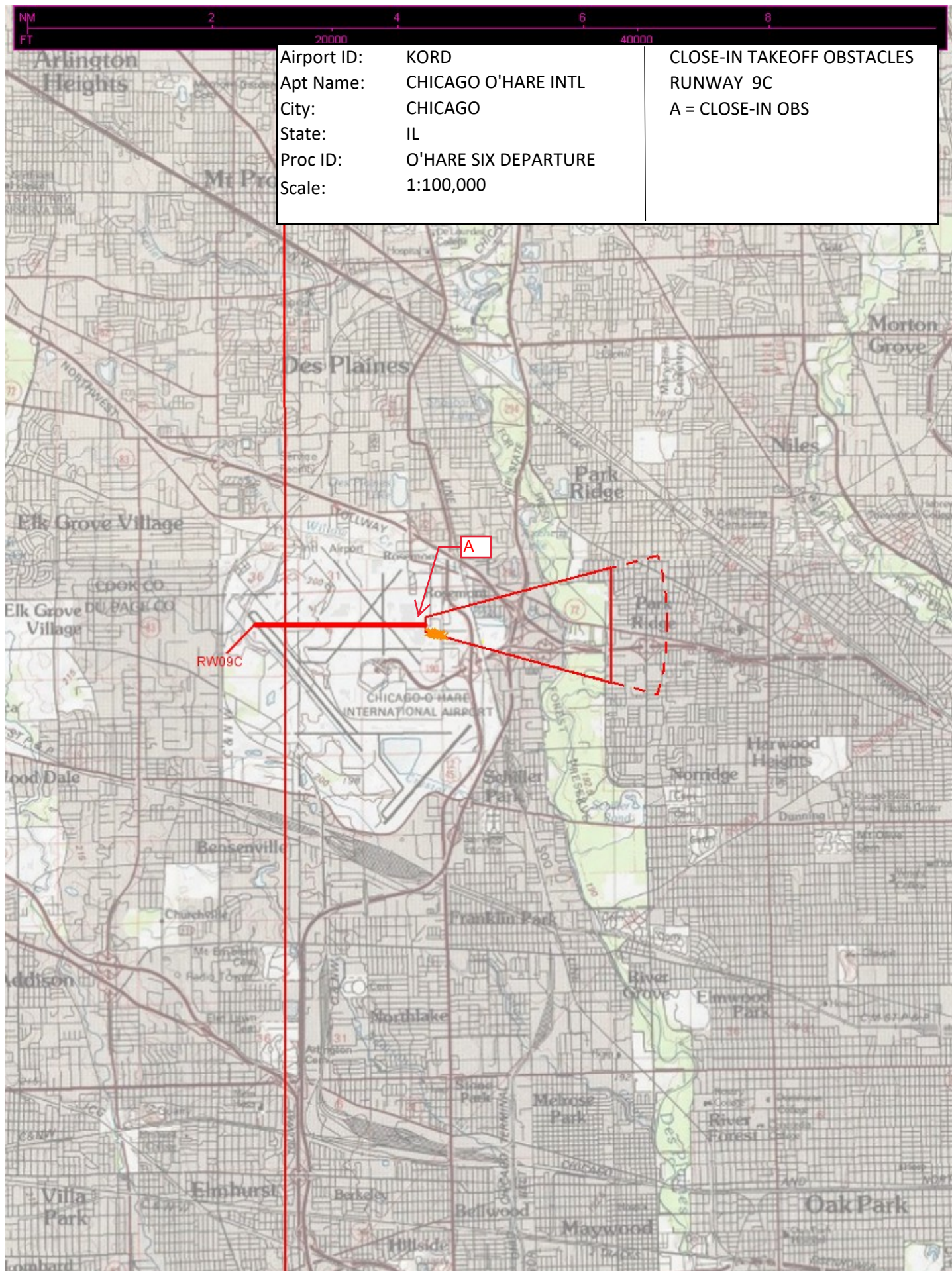


DEPARTURE ROUTE DESCRIPTION

ALL AIRCRAFT: Expect RADAR vectors to first enroute navaid/fix.
Expect clearance to requested altitude/flight level ten minutes after departure.

ALL DME EQUIPPED AIRCRAFT: Cross 5.5 DME arc of GCO DME at or above 3000,
cross 8.5 DME arc of GCO DME at or above 4000, maintain 5000 or assigned altitude.
If unable to comply advise ATC as soon as possible prior to departure.

PROTOTYPE-NOT FOR NAVIGATION



Airport ID: KORD
Apt Name: CHICAGO O'HARE INTL
City: CHICAGO
State: IL
Proc ID: O'HARE SIX DEPARTURE
Scale: 1:100,000

CLOSE-IN TAKEOFF OBSTACLES
RUNWAY 9C
A = CLOSE-IN OBS

Airport ID: KORD
Apt Name: CHICAGO O'HARE INTL
City: CHICAGO
State: IL
Proc ID: O'HARE SIX DEPARTURE
Scale: 1:500,000

CLOSE-IN TAKEOFF OBSTACLES
RUNWAY 9C
A = CLOSE-IN OBS



NM
FT

2

4

6

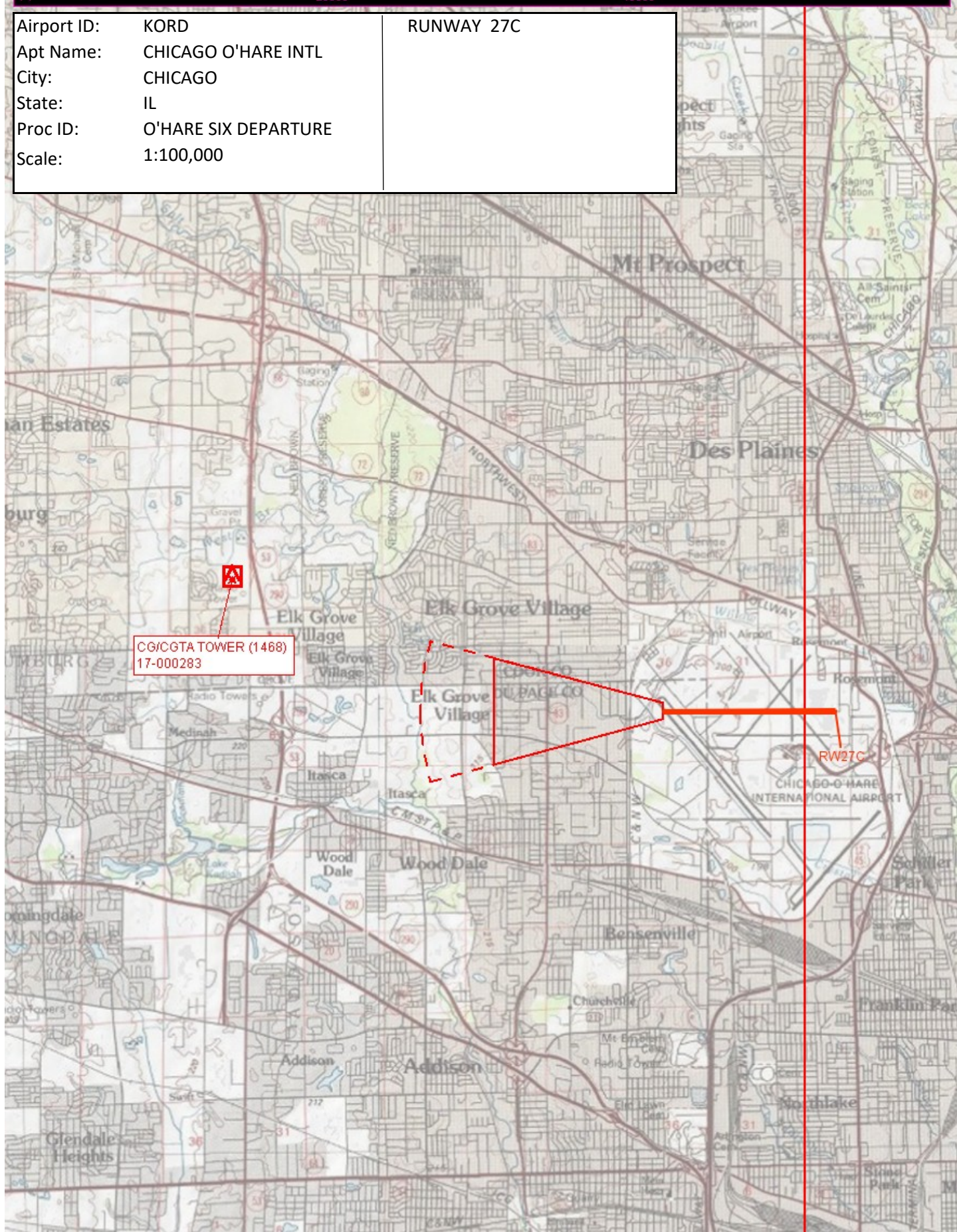
8

20000

40000

Airport ID: KORD
Apt Name: CHICAGO O'HARE INTL
City: CHICAGO
State: IL
Proc ID: O'HARE SIX DEPARTURE
Scale: 1:100,000

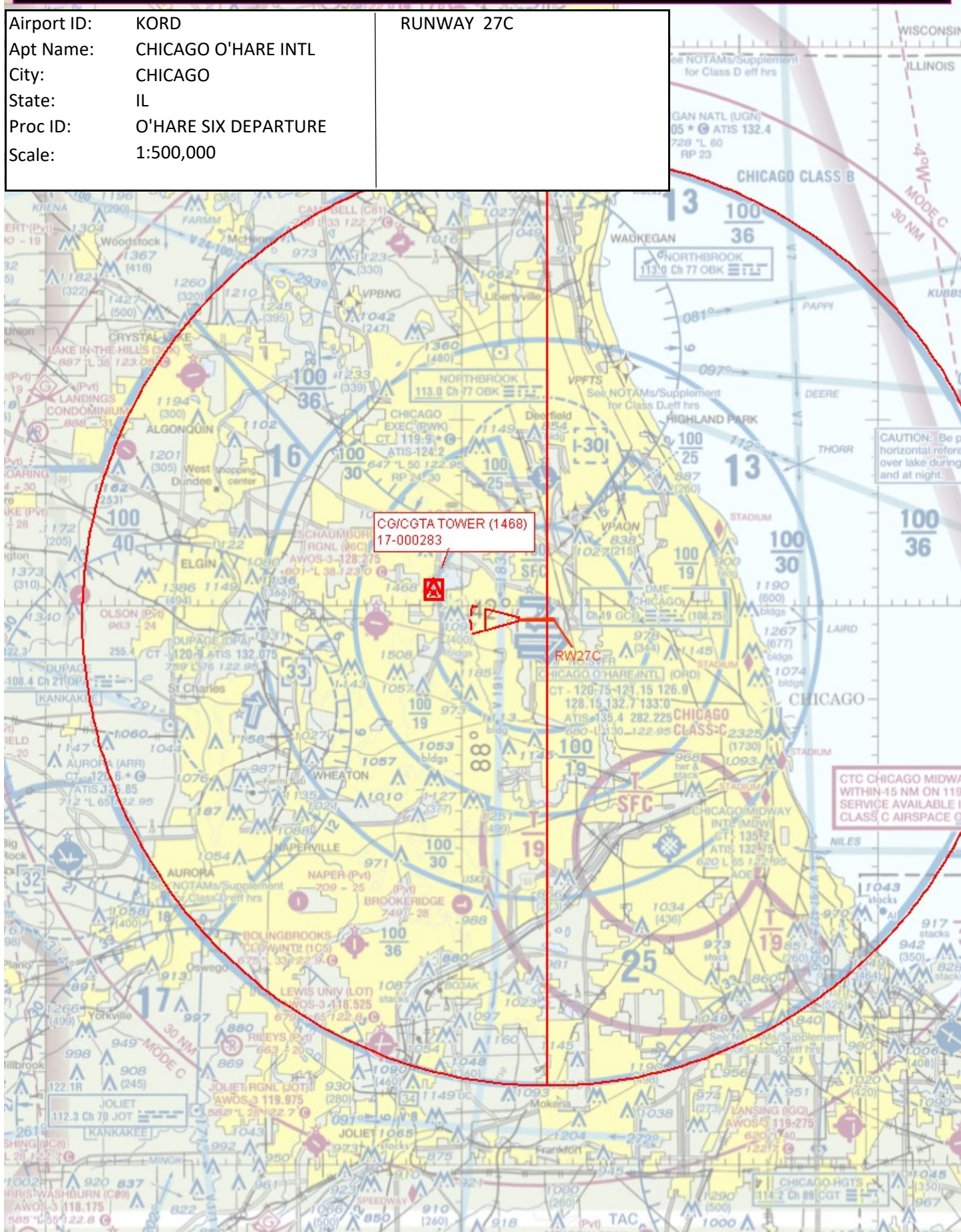
RUNWAY 27C

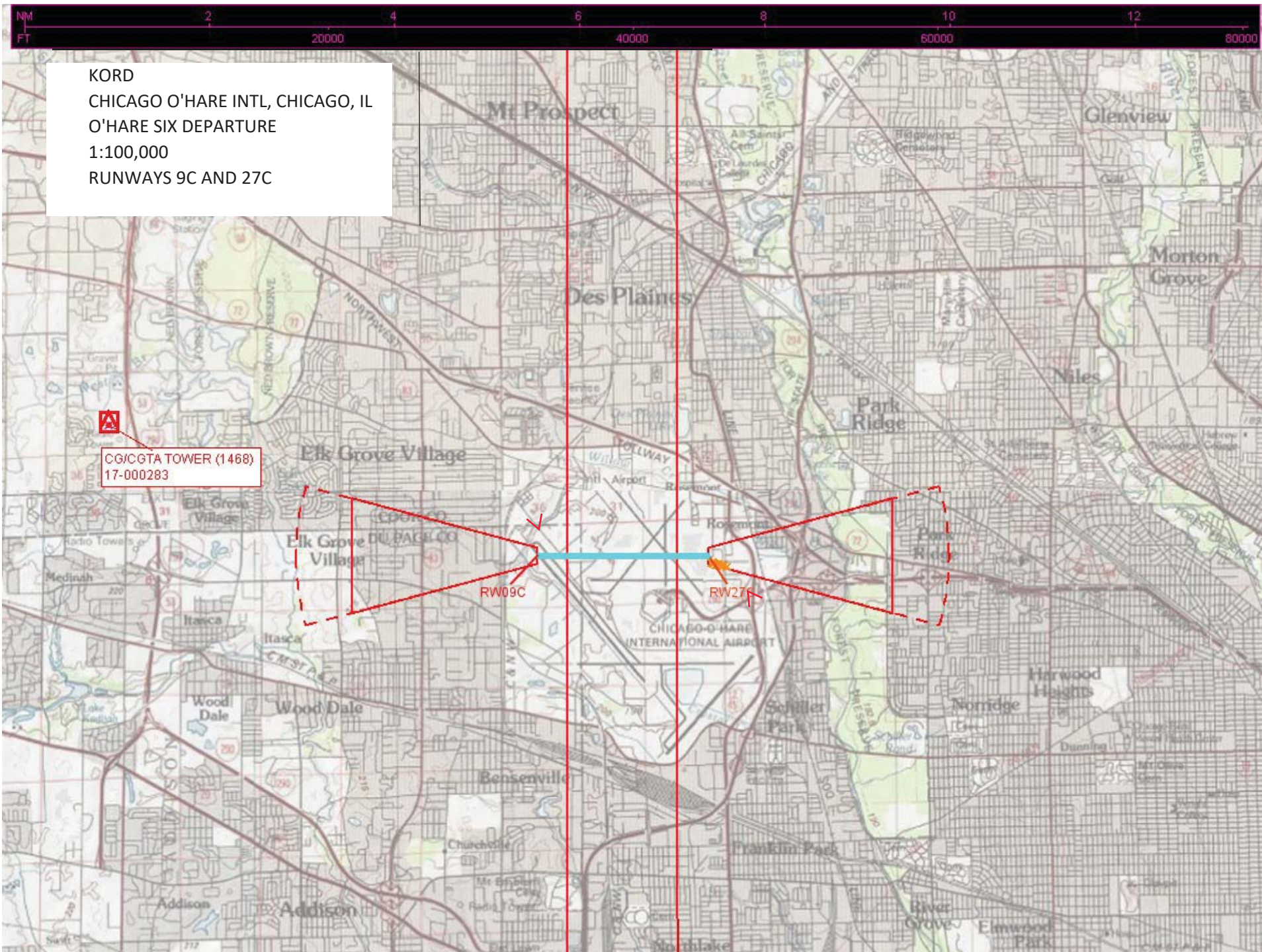




Airport ID: KORD
Apt Name: CHICAGO O'HARE INTL
City: CHICAGO
State: IL
Proc ID: O'HARE SIX DEPARTURE
Scale: 1:500,000

RUNWAY 27C





KORD
CHICAGO O'HARE INTL, CHICAGO, IL
O'HARE SIX DEPARTURE
1:500,000
RUNWAYS 9C AND 27C

CG/CGTA TOWER (1468)
17-000283

RW09C
RW27C

CHICAGO CLASS B
CHICAGO CLASS C
CHICAGO MIDWAY INTL (MDW)
CHICAGO O'HARE INTL (ORD)
CHICAGO HGTS
CHICAGO SFC
CHICAGO TOWER
CHICAGO UNICOM
CHICAGO ATIS
CHICAGO DEPARTURE
CHICAGO ARRIVAL
CHICAGO GND
CHICAGO CLD
CHICAGO CRV
CHICAGO DME
CHICAGO FSS
CHICAGO MFD
CHICAGO NDB
CHICAGO VORTAC
CHICAGO VORTOM
CHICAGO VORTOM-2
CHICAGO VORTOM-3
CHICAGO VORTOM-4
CHICAGO VORTOM-5
CHICAGO VORTOM-6
CHICAGO VORTOM-7
CHICAGO VORTOM-8
CHICAGO VORTOM-9
CHICAGO VORTOM-10
CHICAGO VORTOM-11
CHICAGO VORTOM-12
CHICAGO VORTOM-13
CHICAGO VORTOM-14
CHICAGO VORTOM-15
CHICAGO VORTOM-16
CHICAGO VORTOM-17
CHICAGO VORTOM-18
CHICAGO VORTOM-19
CHICAGO VORTOM-20
CHICAGO VORTOM-21
CHICAGO VORTOM-22
CHICAGO VORTOM-23
CHICAGO VORTOM-24
CHICAGO VORTOM-25
CHICAGO VORTOM-26
CHICAGO VORTOM-27
CHICAGO VORTOM-28
CHICAGO VORTOM-29
CHICAGO VORTOM-30
CHICAGO VORTOM-31
CHICAGO VORTOM-32
CHICAGO VORTOM-33
CHICAGO VORTOM-34
CHICAGO VORTOM-35
CHICAGO VORTOM-36
CHICAGO VORTOM-37
CHICAGO VORTOM-38
CHICAGO VORTOM-39
CHICAGO VORTOM-40
CHICAGO VORTOM-41
CHICAGO VORTOM-42
CHICAGO VORTOM-43
CHICAGO VORTOM-44
CHICAGO VORTOM-45
CHICAGO VORTOM-46
CHICAGO VORTOM-47
CHICAGO VORTOM-48
CHICAGO VORTOM-49
CHICAGO VORTOM-50
CHICAGO VORTOM-51
CHICAGO VORTOM-52
CHICAGO VORTOM-53
CHICAGO VORTOM-54
CHICAGO VORTOM-55
CHICAGO VORTOM-56
CHICAGO VORTOM-57
CHICAGO VORTOM-58
CHICAGO VORTOM-59
CHICAGO VORTOM-60
CHICAGO VORTOM-61
CHICAGO VORTOM-62
CHICAGO VORTOM-63
CHICAGO VORTOM-64
CHICAGO VORTOM-65
CHICAGO VORTOM-66
CHICAGO VORTOM-67
CHICAGO VORTOM-68
CHICAGO VORTOM-69
CHICAGO VORTOM-70
CHICAGO VORTOM-71
CHICAGO VORTOM-72
CHICAGO VORTOM-73
CHICAGO VORTOM-74
CHICAGO VORTOM-75
CHICAGO VORTOM-76
CHICAGO VORTOM-77
CHICAGO VORTOM-78
CHICAGO VORTOM-79
CHICAGO VORTOM-80
CHICAGO VORTOM-81
CHICAGO VORTOM-82
CHICAGO VORTOM-83
CHICAGO VORTOM-84
CHICAGO VORTOM-85
CHICAGO VORTOM-86
CHICAGO VORTOM-87
CHICAGO VORTOM-88
CHICAGO VORTOM-89
CHICAGO VORTOM-90
CHICAGO VORTOM-91
CHICAGO VORTOM-92
CHICAGO VORTOM-93
CHICAGO VORTOM-94
CHICAGO VORTOM-95
CHICAGO VORTOM-96
CHICAGO VORTOM-97
CHICAGO VORTOM-98
CHICAGO VORTOM-99
CHICAGO VORTOM-100



RW09C

CTC CHICAGO MIDWAY APP
WITHIN-15 NM ON 110.45 2695
SERVICE AVAILABLE IN CHAR
CLASS C AIRSPACE ONLY

NM
FT

2

4

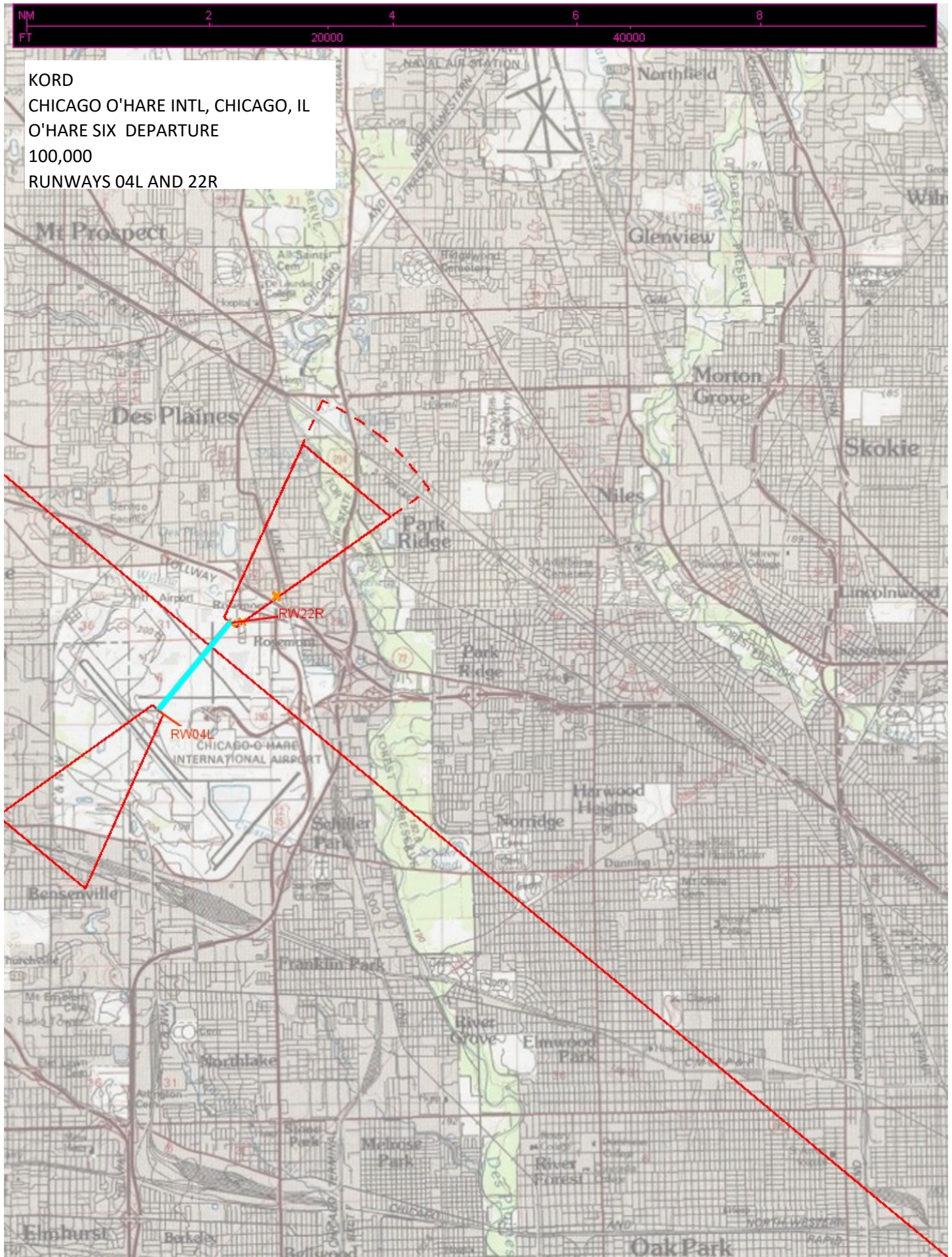
6

8

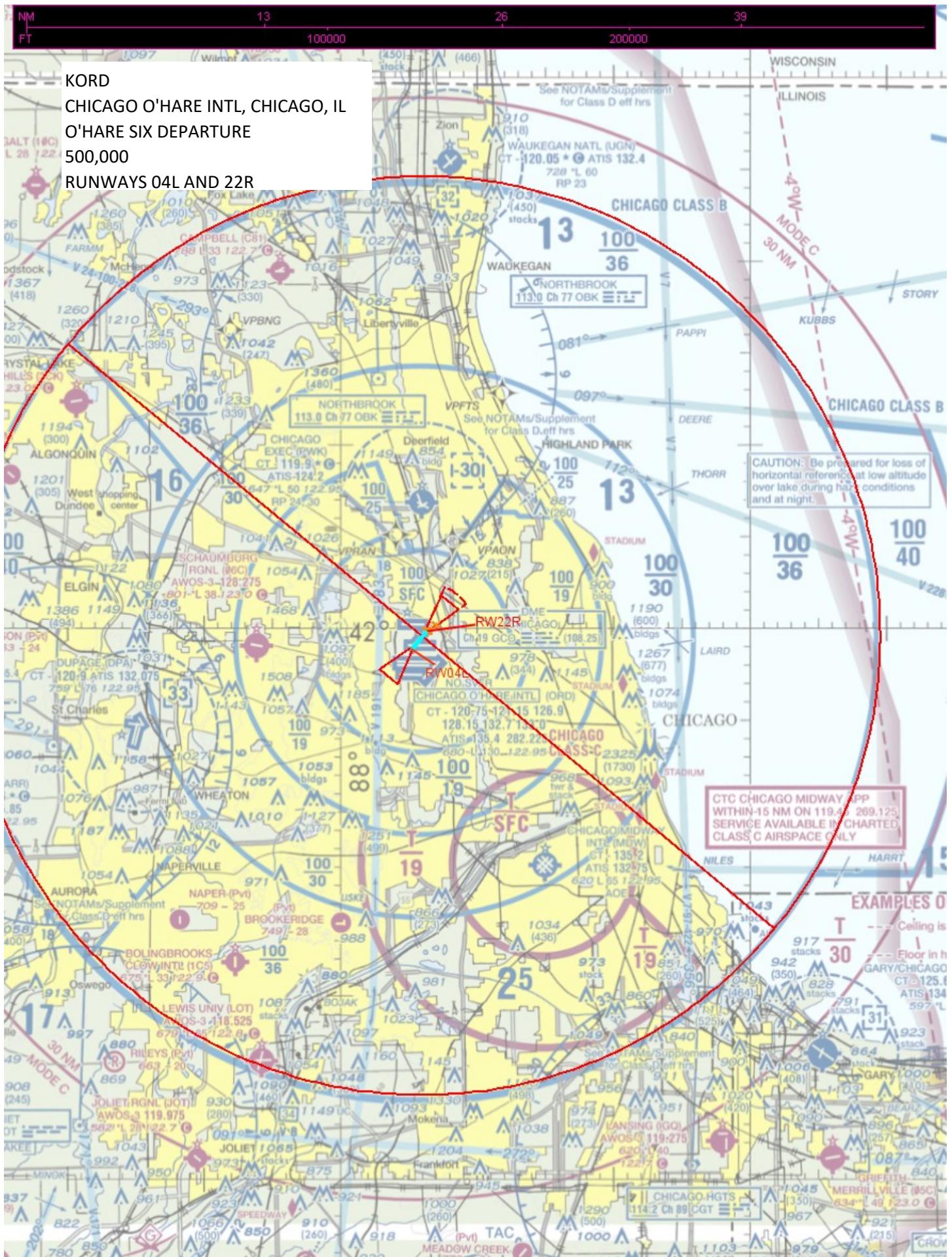
20000

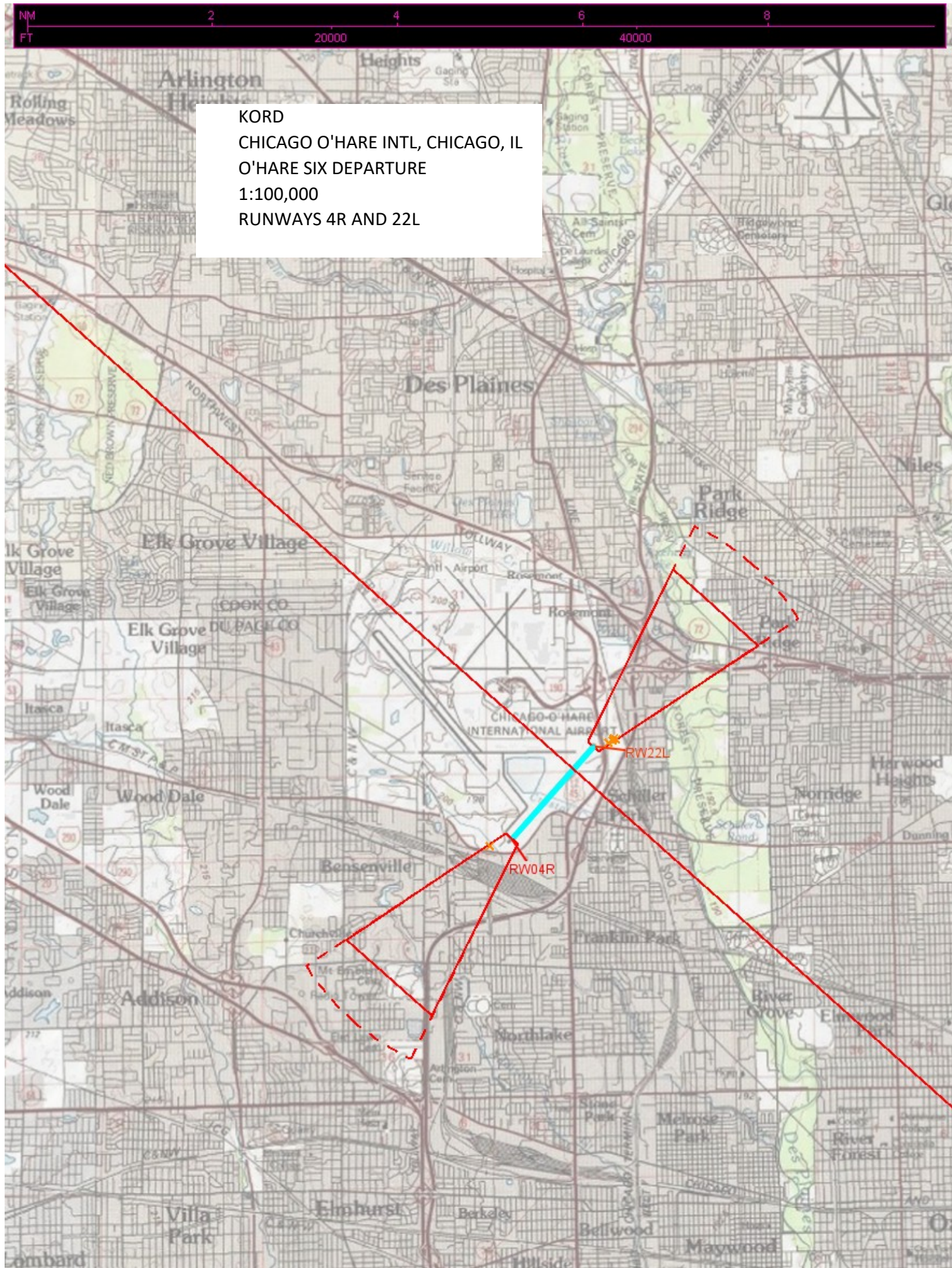
40000

KORD
CHICAGO O'HARE INTL, CHICAGO, IL
O'HARE SIX DEPARTURE
100,000
RUNWAYS 04L AND 22R



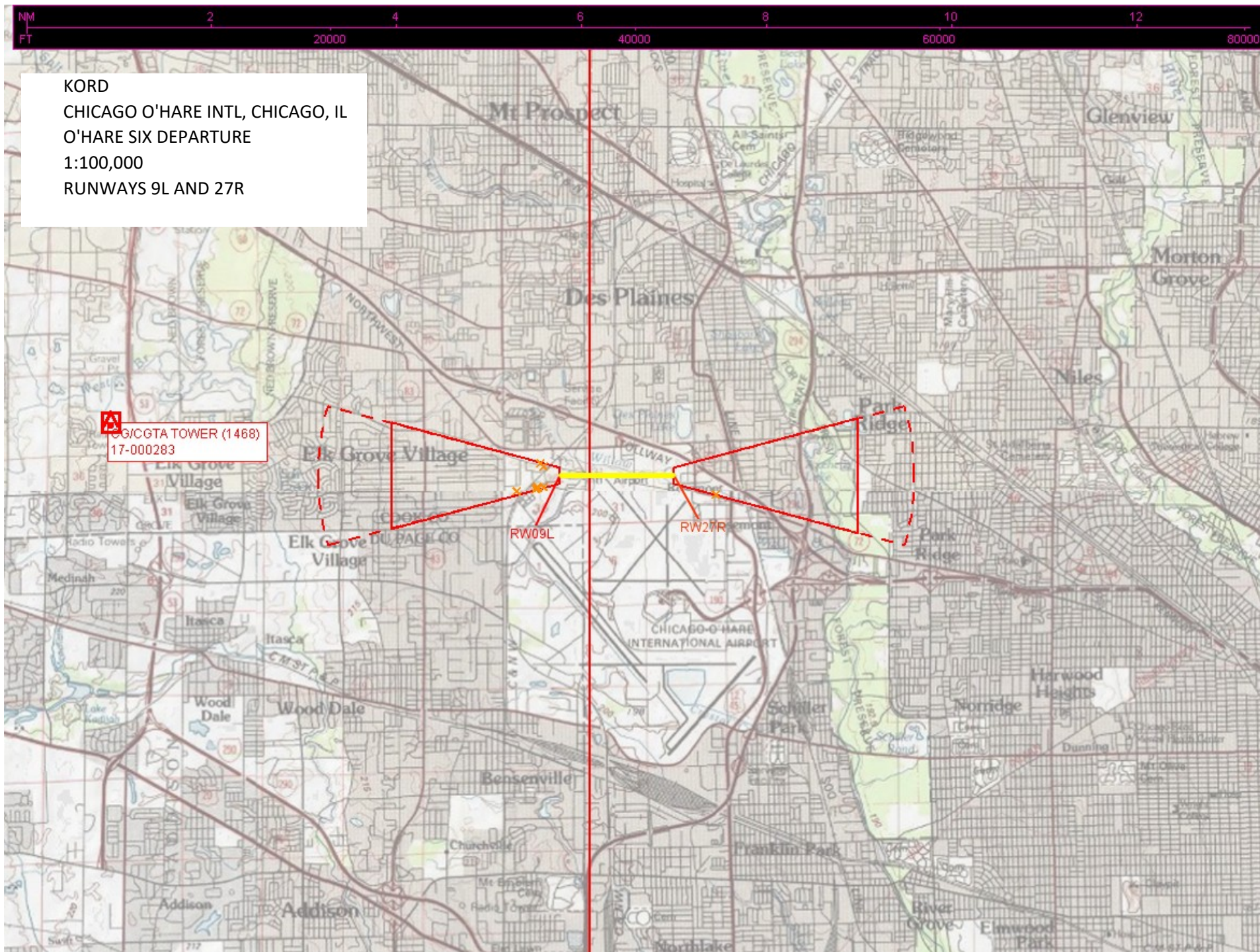
CHICAGO O'HARE INTL, CHICAGO, IL
O'HARE SIX DEPARTURE
500,000
RUNWAYS 04L AND 22R





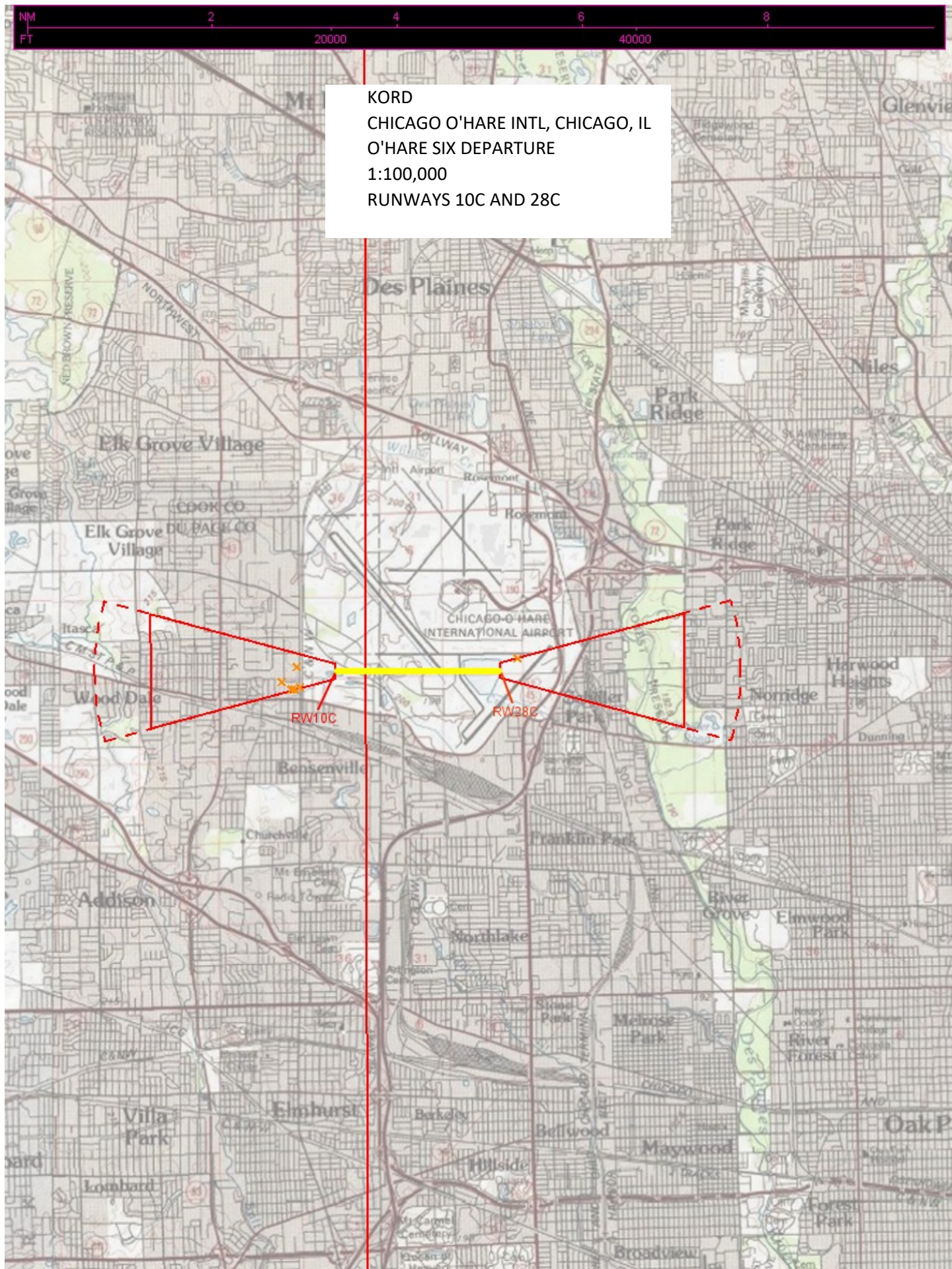
RUNWAYS 4R AND 22L





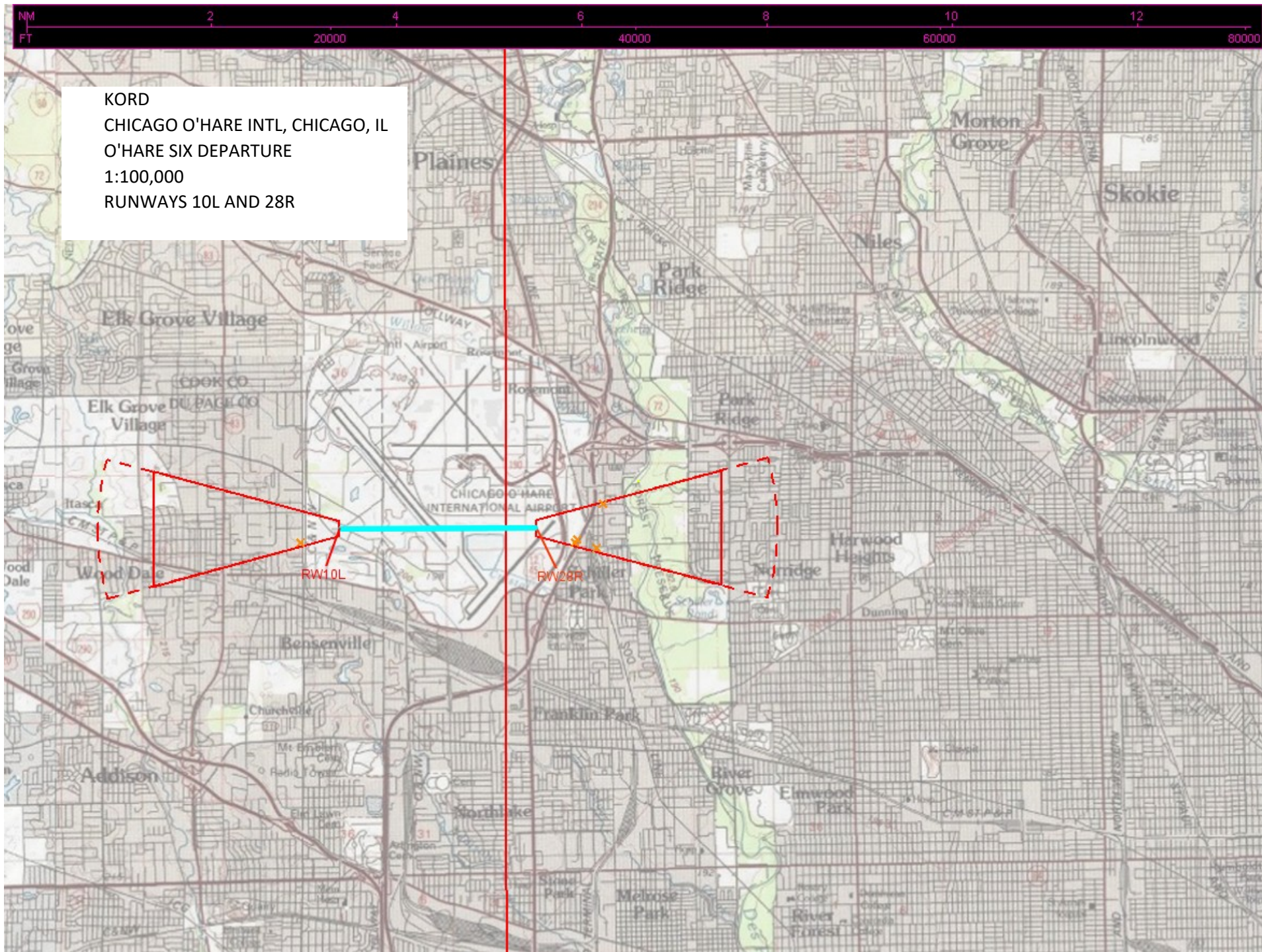
RUNWAYS 9L AND 27R





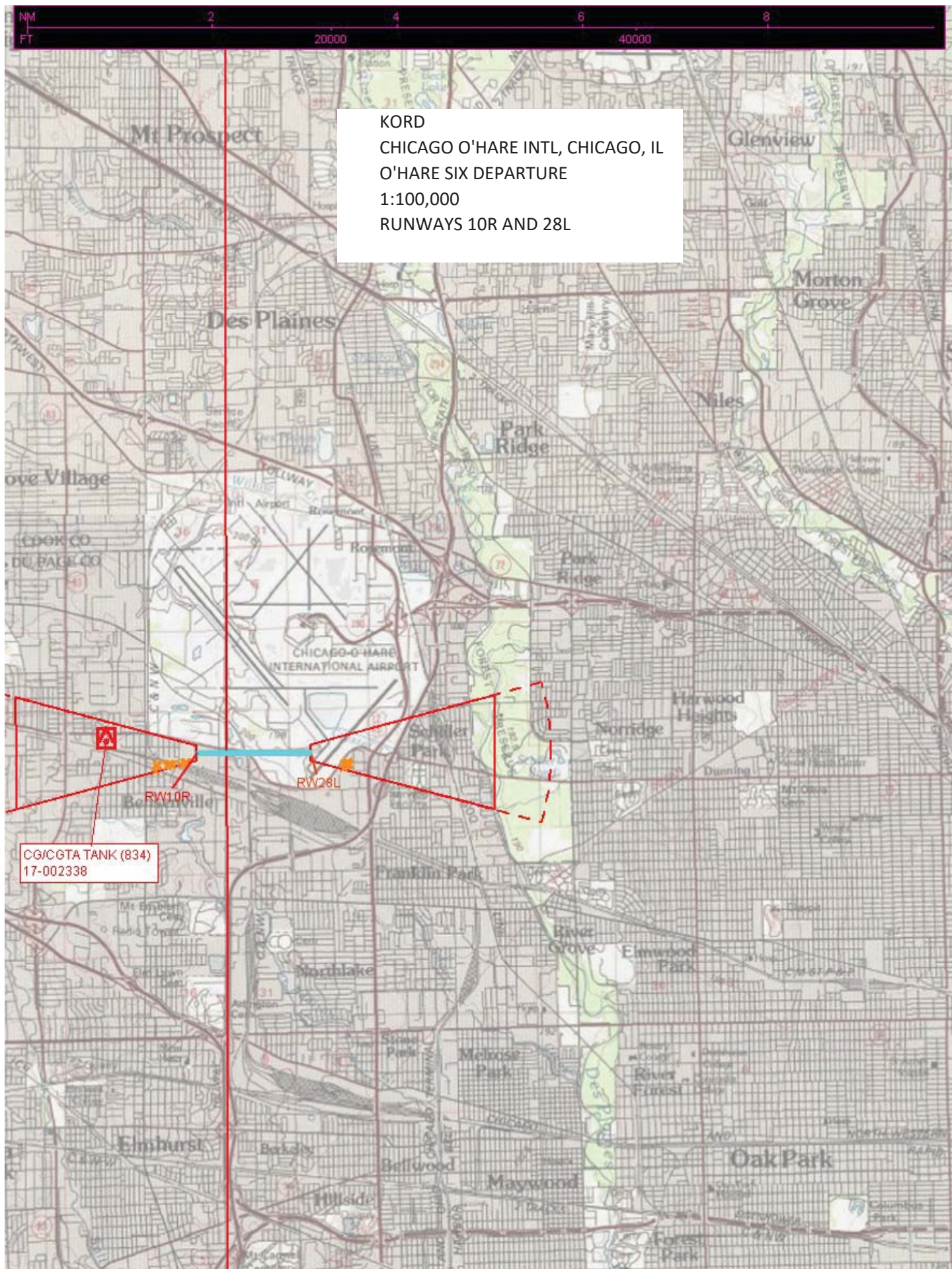
KORD
CHICAGO O'HARE INTL, CHICAGO, IL
O'HARE SIX DEPARTURE
1:100,000
RUNWAYS 10C AND 28C

KORD
CHICAGO O'HARE INTL, CHICAGO, IL
O'HARE SIX DEPARTURE
1:500,000
RUNWAYS 10C AND 28C



KORD
CHICAGO O'HARE INTL, CHICAGO, IL
O'HARE SIX DEPARTURE
1:500,000
RUNWAYS 10L AND 28R





KORD
CHICAGO O'HARE INTL, CHICAGO, IL
O'HARE SIX DEPARTURE
1:500,000
RUNWAYS 10R AND 28L

CG/CGTA TANK (834)
17-002338

CAUTION: Be prepared for loss of horizontal reference at low altitude over lake during hazy conditions

CTC CHICAGO MIDWAY APP
WITHIN 15 NM ON 119.45 269.125
SERVICE AVAILABLE IN CHARTED
CLASS C AIRSPACE ONLY

EXAMPLES