


<b>Flight Procedure Tracking Form</b>		<b>Action:</b> AMENDMENT	<b>Task Type:</b> IAP	<b>Date Open:</b> 09/24/2019	<b>Task #:</b> 2019092435430101002	<b>Request #:</b> 20190924354301
<b>Procedure:</b> APPROACH RNAV (GPS) RWY 32 ORIG-C			<b>Airport ID:</b> KITH	<b>Airport:</b> ITHACA TOMPKINS RGNL		<b>Reimbursable #:</b> NO
<b>City:</b> ITHACA	<b>ST:</b> NY	<b>GPS #:</b>	<b>Estimated Chart Date:</b> 01/30/2020		<b>FICO #:</b>	
<b>Fac ID:</b> N/A		<b>Fac. Type:</b>		<b>Specialist:</b> SHANE FOWLER		
<b>Procedure Review</b>						
	<b>Rec'd</b>	<b>Rel'd</b>	<b>Full Name</b>	<b>Comments</b>		
<b>Lead:</b>	09/24/2019					
<b>QA:</b>						
<b>Liaison:</b>						
<b>Procedure Comments:</b>			<b>Remark Type:</b> INFORMATION			
<p>P-NOTAM.</p> <p>CIRCLING ICON.</p> <p>PROCESSED IAW AIRCRAFT OPERATIONS GROUP (AJW-33) MEMO, OCTOBER 3, 2018, SUBJECT: FLIGHT INSPECTION REVIEW NOT REQUIRED.</p> <p>CONTACT: ALLAN WILL 405-954-6103.</p>						

WAAS CH <b>62815</b> <b>W32A</b>	APP CRS <b>325°</b>	Rwy Idg TDZE <b>1099</b> Apt Elev <b>1099</b>
--	------------------------	---

OLD

RNAV (GPS) RWY 32

ITHACA TOMPKINS RGNL (ITH)

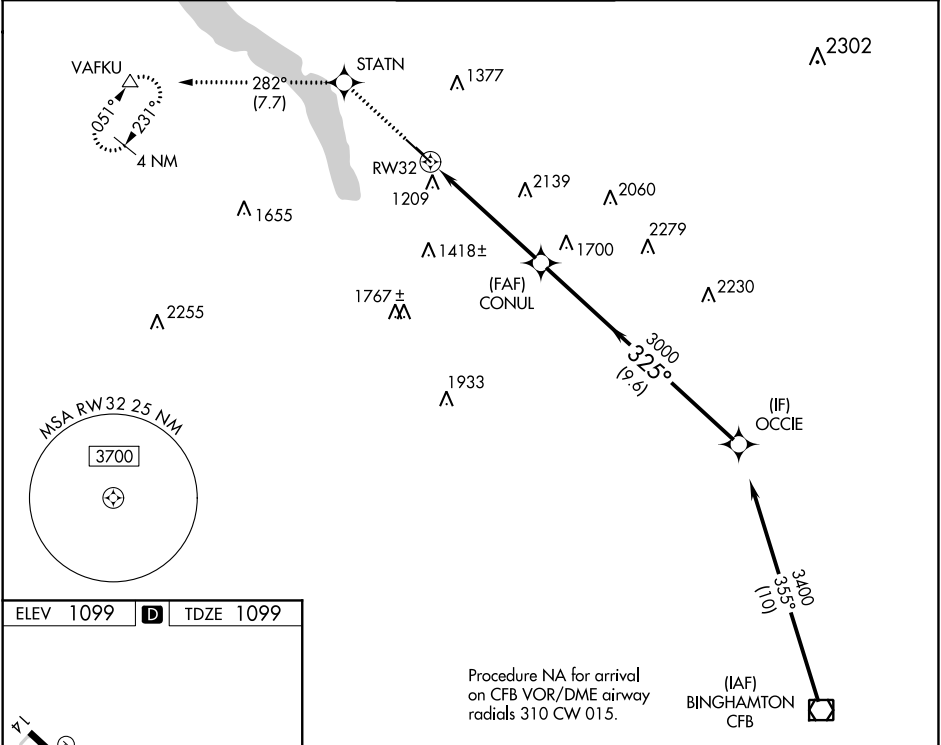
RNP APCH

**⚠** Circling NA to Rwy 15 and 33. Inop table does not apply to LNAV Cat A. Rwy 32 helicopter visibility reduction below  $\frac{3}{4}$  SM NA. When local altimeter setting not received, use Elmira altimeter setting and increase all DA 84 feet and all MDA 100 feet. For inop MALSR, increase LNAV Cat B visibility  $\frac{1}{4}$  mile. For inop MALSR, when using Elmira altimeter setting, increase LPV all Cats visibility to RVR 6000, and increase LNAV Cat B visibility to  $1\frac{1}{2}$ .

MALSR

MISSED APPROACH:  
Climb to 3700 direct  
STATN and on track  
282° to VAFKU and  
hold.

ATIS <b>125.175</b>	ELMIRA APP CON ★ <b>124.3 257.8</b>	ITHACA TOWER ★ <b>119.6 (CTAF) 0</b>	GND CON <b>121.8</b>	UNICOM <b>122.95</b>
------------------------	--	---	-------------------------	-------------------------



ELEV 1099 **D** TDZE 1099

Procedure NA for arrival on CFB VOR/DME airway radials 310 CW 015.

(IAF) BINGHAMTON CFB

3700	STATN	tr 282°	VAFKU	OCCIE
* LNAV only				
* 3.4 NM to RW32				
CONUL				
3000				
325°				
3400				
GP 3.20° TCH 54				

CATEGORY	A	B	C	D
LPV DA	1385/40 286 (300- $\frac{3}{4}$ )			
LNAV MDA	2300/60 1201 (1300- $1\frac{1}{4}$ )		2300-2 $\frac{1}{2}$ 1201 (1300-2 $\frac{1}{2}$ )	
CIRCLING	2300-1 $\frac{1}{4}$ 1201 (1300- $1\frac{1}{4}$ )		2300-3 1201 (1300-3)	

HIRL Rwy 14-32 **0**



# CIRCLING MAP TAKEN FROM ILS OR LOC RWY 32

NM 1 2 3 4 5 6 7 8 9 10  
FT 8000 16000 24000 32000 40000 48000 56000 64000

fpodmf | ithils32 (PROD) | 11 Jan 2018 10:52:02 | 1" = 8333.3 feet (MAP)

**Airport ID: KITH**

**Apt Name: ITHACA TOMPKINS RGNL**

**City: ITHACA**

**State: NY**

**Proc ID: RNAV (GPS) RWY 32**

**AMDT: ORIG-C**

**Scale: 1:100,000**

**#12  
CIRCLING CAT A  
1240' TREE**

**#13  
CIRCLING CAT B  
1297' TREE**

**#14  
CIRCLING CAT C  
1620' TOWER**

**#15  
CIRCLING CAT D  
2136' TOWER**

**#7  
LOC FINAL  
1776' TREE**

**LOC FINAL  
7:1  
1930 AAO**

