

Flight Procedures Cover Page	Task Action: P-NOTAM	Task Type: IAP	Estimated Chart Date: 10/07/2021	APWS Task ID: 276F4B7AAE5E417891BFE9D36320B61D	APWS Project ID: 134B1DCB8D324470BECC82CA11C431BD
Procedure: VOR RWY 24 AMDT 3D		Enroute: NO	Specialist: Miller, Ralph		Agreement Number:
Airport ID: KETB			Airport City: WEST BEND		State: WI
Facility ID: BJB	Facility Type: VOR	Flight Inspection Remark Type:			
<p>Procedure Comments:</p> <p>P-NOTAM.</p> <p>ORDER 8260.3, CHAPTER 2, NEW CIRCLING CRITERIA APPLIED</p> <p>ACTIVE DATA USED.</p> <p>CONTACT JASON KRETSCHMER, AJV-A421, 405-954-5077.</p> <div style="text-align: center; margin-top: 20px;"> <i>Digitally signed by</i> JASON KRETSCHMER Aug 11, 2021 </div>					

QUALITY
45
CHECKED

QUALITY
38
CHECKED

OLD

WEST BEND, WISCONSIN

AL-5649 (FAA)

20086

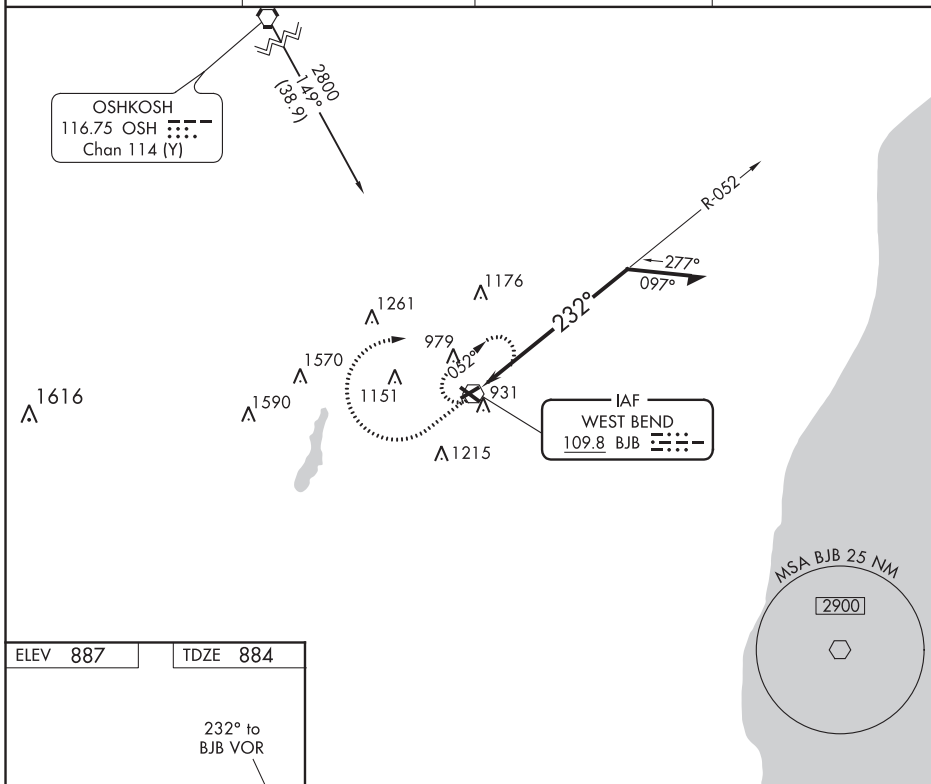
VOR BJB 109.8	APP CRS 232°	Rwy Idg 3897
		TDZE 884
		Apt Elev 887

VOR RWY 24 WEST BEND MUNI (ETB)

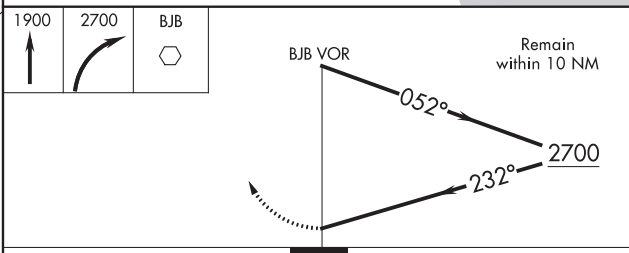
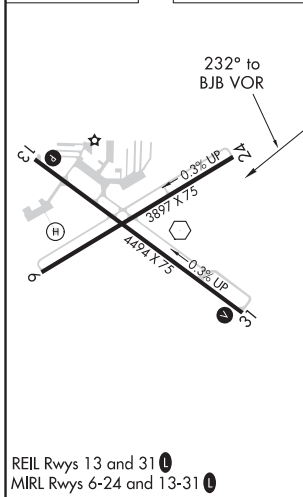
▼ Helicopter visibility reduction below 1 SM NA. When local altimeter setting not received, use Milwaukee/Lawrence J. Timmerman altimeter setting and increase all MDA 80 feet, increase all Cat C/D visibilities ¼ mile. Night landing: Rwy 6, 24 NA.

MISSED APPROACH: Climb to 1900 then climbing right turn 2700 direct BJB VOR and hold, continue climb-in-hold to 2700.

AWOS-3 120.0	MILWAUKEE APP CON 125.35 307.0	CLNC DEL 124.75	UNICOM 122.8 (CTAF) 0
------------------------	--	---------------------------	---------------------------------



ELEV 887	TDZE 884
----------	----------



CATEGORY	A	B	C	D
S-24	1500-1 616 (700-1)		1500-1 3/4 616 (700-1 3/4)	1500-2 616 (700-2)
CIRCLING	1500-1 613 (700-1)		1500-1 3/4 613 (700-1 3/4)	1520-2 633 (700-2)

WEST BEND, WISCONSIN
Amdt 3C 03APR14

43°25'N - 88°08'W

WEST BEND MUNI (ETB)
VOR RWY 24

EC-3, 16 JUL 2020 to 13 AUG 2020

EC-3, 16 JUL 2020 to 13 AUG 2020

KETB
WEST BEND MUNI
WEST BEND, WI
VOR RWY 24, AMDT 3D
NEW CIRCLING AREA 1:100,000

Circling CAT C/D TOWER (1258)
55-001000

Circling CAT A TREE (1109)

Circling CAT B TOWER (1156)
55-000184

