

Flight Procedures Cover Page	Task Action: Abbreviated Amendment	Task Type: IAP	Estimated Chart Date: 12/26/2024	APWS Task ID: 2769AB70FDEC47B6B61806C0D48D6128	APWS Project ID: 529F816CAFBC4E1194E765A95729C679
Procedure: RNAV (GPS) RWY 22 AMDT 0B		Enroute: NO	Specialist: Marsh, Andre		Agreement Number:
Airport ID: KCJR			Airport City: CULPEPER		State: VA
Facility ID:	Facility Type:	Flight Inspection Remark Type:			
<div>Procedure Comments: PROCESSED IAW TECHNICAL SUPPORT GROUP (AJF-17) MEMO DATED 07/07/2021 GUIDANCE FOR PROCEDURAL CHANGES REQUIRING FLIGHT INSPECTION/VALIDATION. DAVID DANNER, AJV-A420: 405-954-5077</div>					



WAAS CH 56306 W22A	APP CRS 218°	Rwy Idg 5000 TDZE 315 Apt Elev 316
--	------------------------	---

RNAV (GPS) RWY 22
CULPEPER RGNL (CJR)

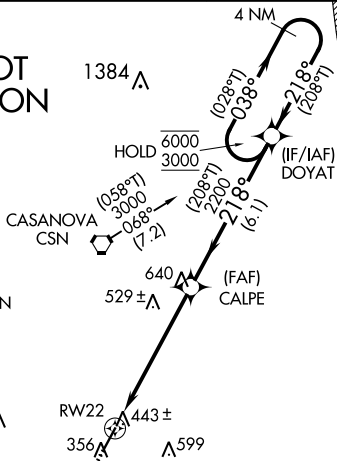
RNP APCH - GPS.

T Rwy 22 helicopter visibility reduction below 1 SM NA. Baro-VNAV NA when using IAD altimeter setting. For uncompensated Baro-VNAV systems, LNAV/VNAV NA below -1.5°C or above 48°C. When local altimeter setting not received, use IAD altimeter setting and increase LPV DA to 730 feet; increase LNAV/VNAV DA to 776 feet; increase all MDAs 80 feet and visibility Cats C ¼ SM and D ½ SM. Straight-in Rwy 22 at night, operational VGSI required, remain on or above VGSI glidepath until threshold.

MISSED APPROACH:
Climb to 3000 direct
FAXIK and hold ~~climb~~
~~to 657 on.~~
remove "climb to 657
n"

AWOS-3 119.325	POTOMAC APP CON 128.525 306.925	CLNC DEL 121.6	UNICOM 123.075 (CTAF) 0
--------------------------	---	--------------------------	-----------------------------------

PROTOTYPE-NOT
FOR NAVIGATION



**WARNING - WASHINGTON DC SFRA.
CONTACT POTOMAC APP CON.**

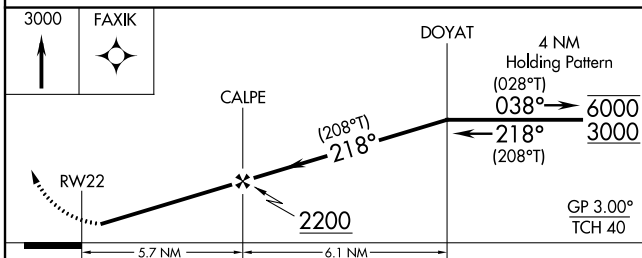
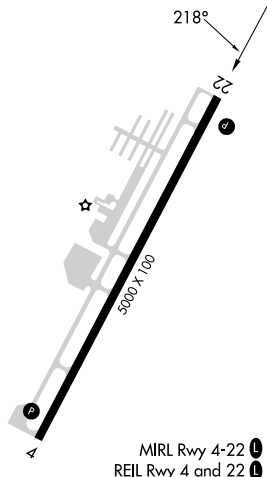
WASHINGTON DC
METROPOLITAN SFRA

Procedure NA for arrivals at CSN
VORTAC via V286 eastbound.

MISSED APCH FIX



ELEV 316	TDZE 315
----------	----------



CATEGORY	A	B	C	D
LPV DA	657-1¼ 342 (400-1¼)			
INAV/ VNAV DA	703-1½ 388 (400-1½)			
INAV MDA	800-1 485 (500-1)	800-1¼ 485 (500-1¼)		800-1½ 485 (500-1½)

CULPEPER, VIRGINIA
Orig-B FIG

38°32'N-77°-52'W

NEW

CULPEPER RGNL (CJR)

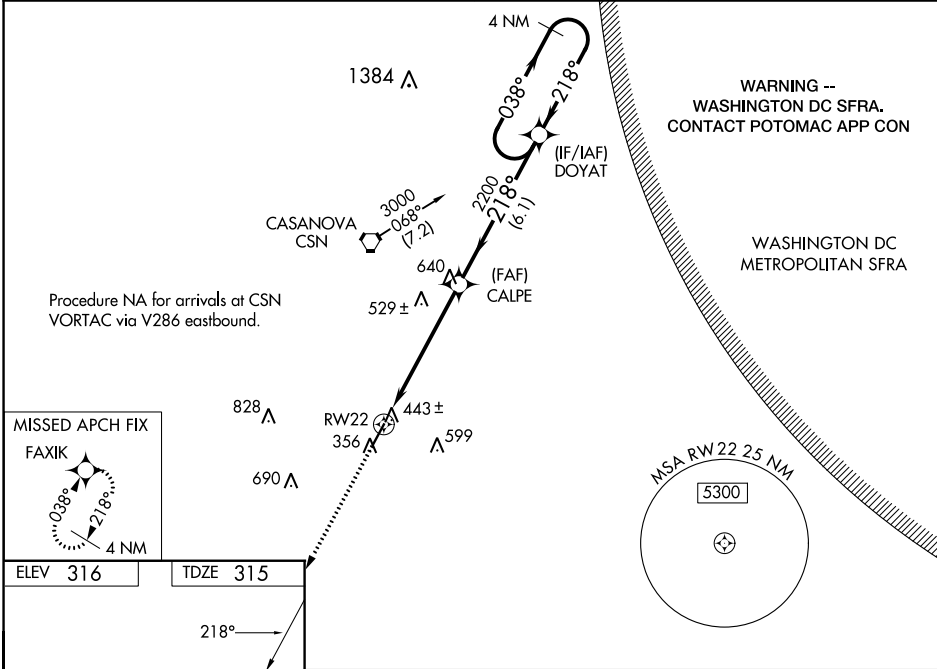
RNAV (GPS) RWY 22

WAAS CH 56306 W22A	APP CRS 218°	Rwy Idg TDZE 315 Apt Elev 316
--	------------------------	---

RNAV (GPS) RWY 22

CULPEPER RGNL (CJR)

RNP APCH. ⚠ When VGSI inoperative, procedure NA at night. Baro-VNAV NA when using Washington Dulles Intl altimeter setting. For uncompensated Baro-VNAV systems, LNAV/VNAV NA below -15°C or above 48°C. Rwy 22 helicopter visibility reduction below 1 SM NA. When local altimeter setting not received, use Washington Dulles Intl altimeter setting and increase all DAs/MDAs 80 feet, LPV and LNAV/VNAV all Cats visibility ¼ mile, LNAV Cats C and D visibility ¼ mile.		MISSED APPROACH: Climb to 3000 direct FAXIK and hold.	
AWOS-3 119.325	POTOMAC APP CON 128.525 306.925	CLNC DEL 121.6	UNICOM 123.075 (CTAF) 📻



ELEV 316 TDZE 315		3000 FAXIK		DOYAT 4 NM Holding Pattern	
218°		RW22		218° 2200	
5.7 NM		6.1 NM		GP 3.00° TCH 40	
CATEGORY	A	B	C	D	
LPV DA	657-1¼		342 (400-1¼)		
LNAV/VNAV DA	703-1½		388 (400-1½)		
LNAV MDA	800-1	485 (500-1)	800-1¼ 485 (500-1¼)	800-1½ 485 (500-1½)	

NE-3, 11 JUL 2024 to 08 AUG 2024

NE-3, 11 JUL 2024 to 08 AUG 2024