

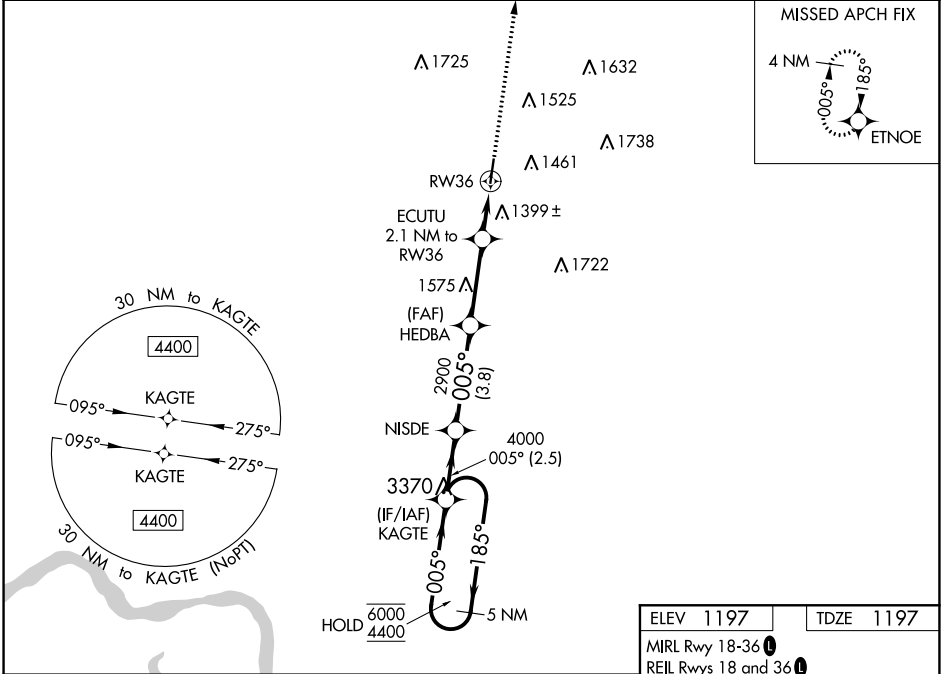
Flight Procedures Cover Page	Task Action: FLIGHT CHECK	Task Type: IAP	Estimated Chart Date: 09/08/2022	APWS Task ID: 272C32ED4C0644DEA73893C016898C13	APWS Project ID: 9E373B810D16468B8B1C327C910E6F37
Procedure: RNAV (GPS) RWY 36 AMDT 1D		Enroute: NO	Specialist: Melton, William		Agreement Number:
Airport ID: KLRJ			Airport City: LE MARS		State: IA
Facility ID:	Facility Type:	Flight Inspection Remark Type: New FC Slot			
Procedure Comments: PENDING DATA USED FOR KLRJ. CONTACT DON SMITH (405) 954-8222.					

WAAS CH 42516 W36A	APP CRS 005°	Rwy Idg 4755 TDZE 1197 Apt Elev 1197
--	------------------------	---

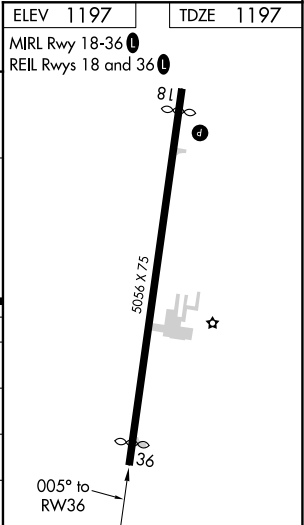
RNAV (GPS) RWY 36
LE MARS MUNI (L.R.J)

RNP APCH.	MISSED APPROACH: Climb to 4000 direct ETNOE and hold.
<div><div>▼</div><div>▲</div><div>❄</div></div> <div>Rwy 36 helicopter visibility reduction below 3/4 SM NA. For uncompensated Baro-VNAV systems, LNAV/VNAV NA below -17°C or above 54°C.</div>	

AWOS-3P 120.975	SIOUX CITY APP CON * 124.6 307.0	UNICOM 122.8 (CTAF) 0
---------------------------	--	---------------------------------



5 NM Holding Pattern		KAGTE	NISDE	HEDBA	ECUTU	4000	ETNOE
6000 ← 185°		005° →	005°	2900	2.1 NM to RW36		
4400		4000		2900	*1.3 NM to RW36		
GP 3.00°							
TCH 40							
		2.5 NM	3.8 NM	3.1 NM	0.8 NM	1.3 NM	
CATEGORY	A	B	C	D			
LPV DA	1469-1		272 (300-1)	NA			
LNAV/VNAV DA	1723-17/8		526 (600-17/8)	NA			
LNAV MDA	1660-1		463 (500-1)	1660-13/8			
				463 (500-13/8)			
CIRCLING	1760-1		1780-1	1840-13/4			
	563 (600-1)		583 (600-1)	643 (700-13/4)			



WAAS CH 42516 W36A	APP CRS 005°	Rwy Idg 4755 TDZE 1197 Apt Elev 1197
--	------------------------	---

RNAV (GPS) RWY 36
LE MARS MUNI (LRJ)

RNP APCH - GPS.



Rwy 36 helicopter visibility reduction below 1 SM NA. For uncompensated Baro-VNAV systems, LNAV/VNAV NA below -17°C or above 54°C.

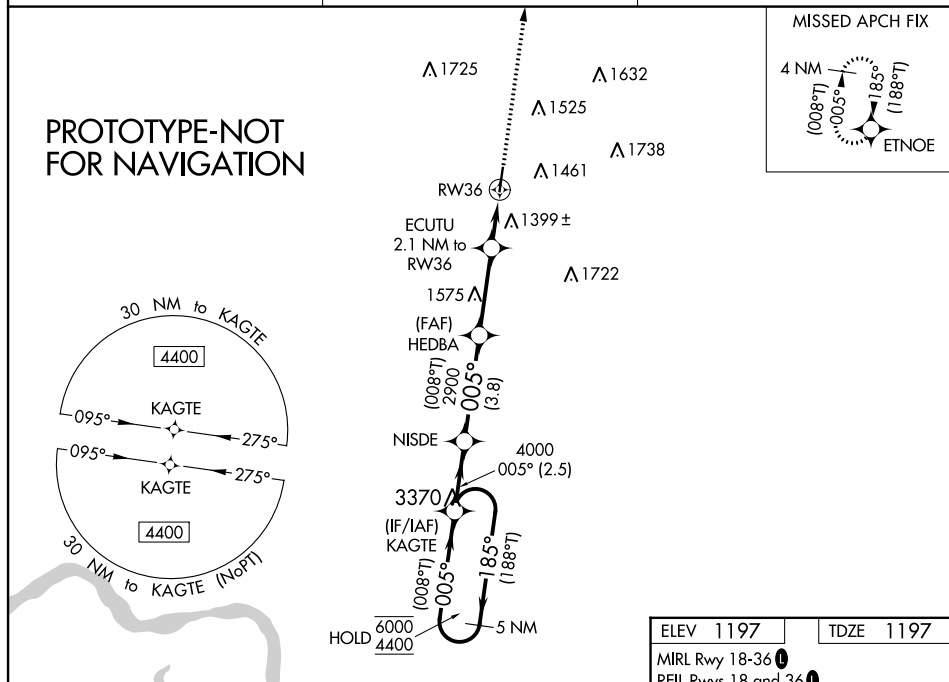
MISSED APPROACH: Climb to 4000 direct
ETNOE and hold.

AWOS-3P
120.975

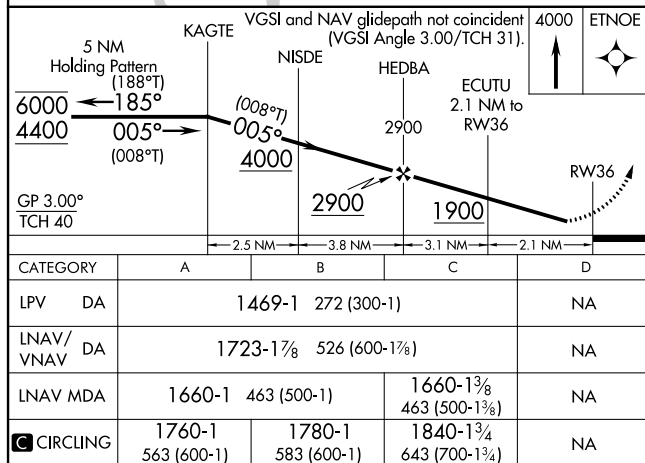
SIOUX CITY APP CON ★
 124.6 307.0

UNICOM
122.8 (CTAF) **L**

PROTOTYPE-NOT
FOR NAVIGATION



ELEV 1197	TDZE 1197
MIRL Rwy 18-36 L	
REIL Rwy 18 and 36 L	

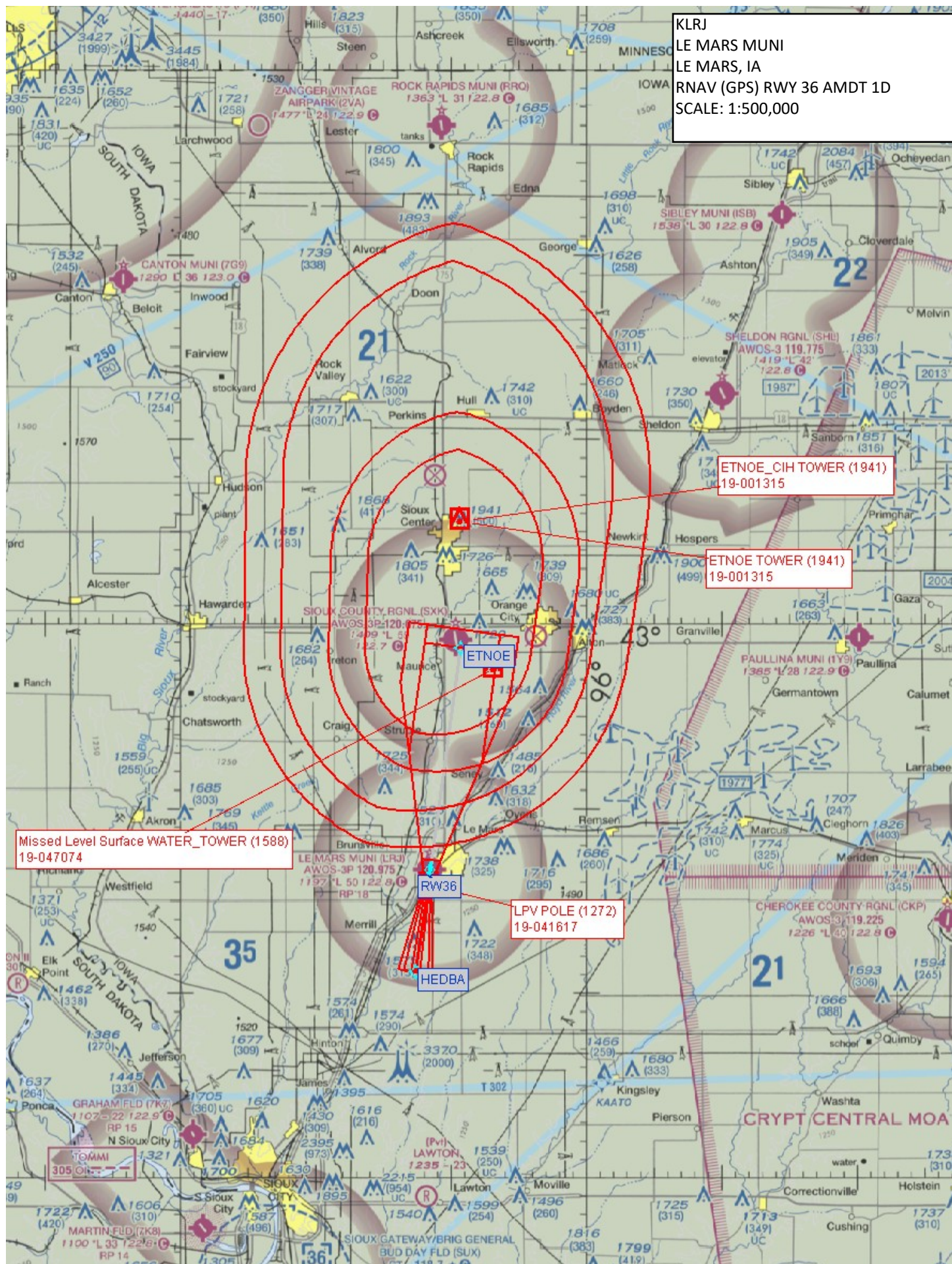


LE MARS, IOWA
Amdt 1D FIG

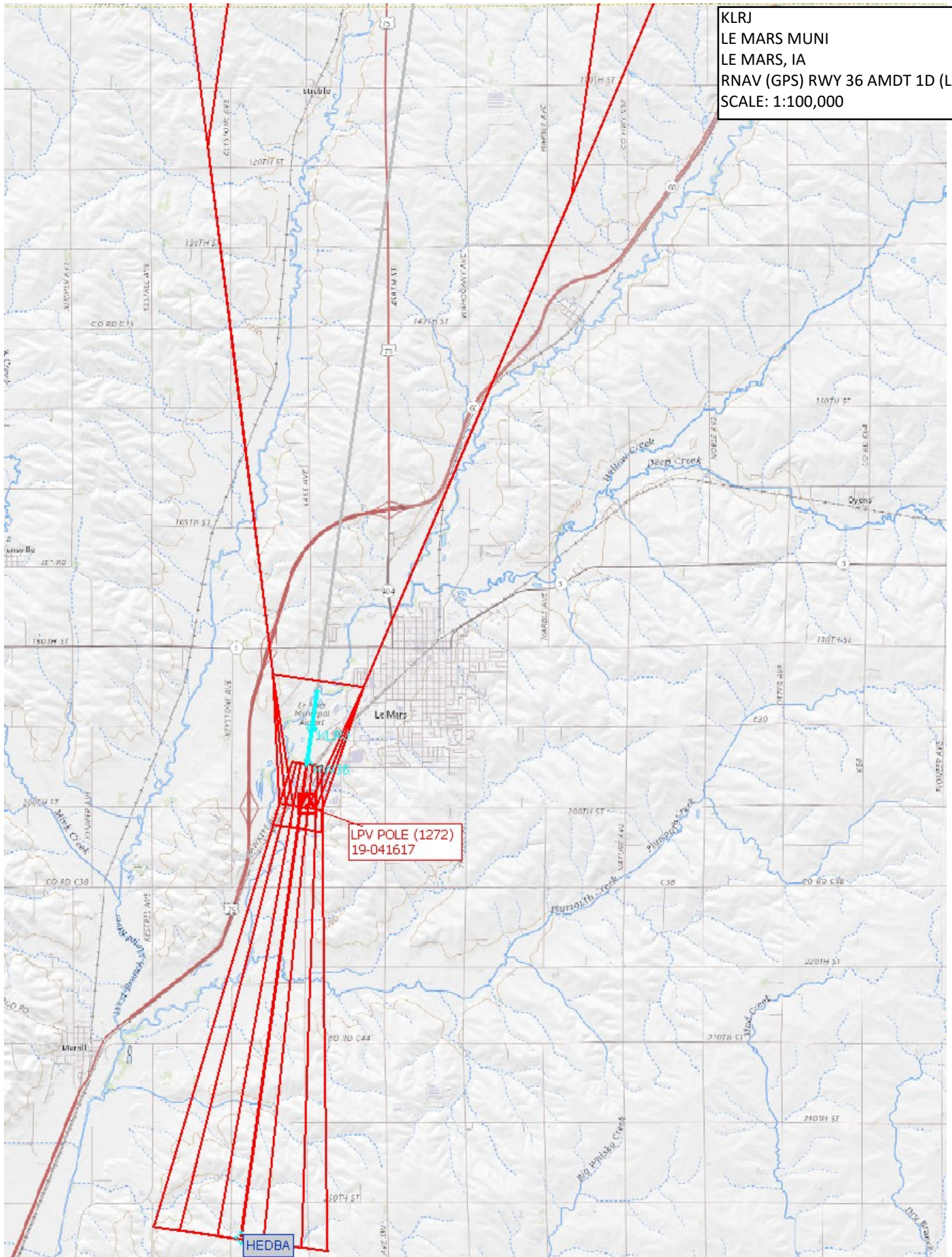
42°47'N-96°12'W

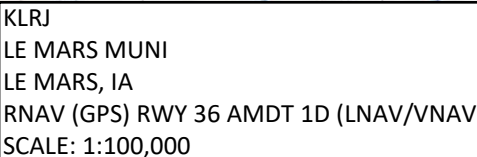
LE MARS MUNI (LRJ)
RNAV (GPS) RWY 36

SCALE: 1:500,000



KLRJ
LE MARS MUNI
LE MARS, IA
RNAV (GPS) RWY 36 AMDT 1D (LPV)
SCALE: 1:100,000





KLRJ
LE MARS MUNI
LE MARS, IA
RNAV (GPS) RWY 36 AMDT 1D
(LNAV & CIRCLING)
SCALE: 1:100,000

