

Flight Procedures Cover Page	Task Action: FLIGHT CHECK	Task Type: IAP	Estimated Chart Date: 06/17/2021	APWS Task ID: 271FA80E8C8E41789BDDE1346CB52ABA	APWS Project ID: 3031DF393D2F459DBBAA0868060E7D1E
Procedure: VOR Y OR TACAN Y RWY 30 AMDT 12		Enroute: NO	Specialist: Blanco, Joseph		Agreement Number:
Airport ID: PAKN		Airport City: KING SALMON		State: AK	
Facility ID: AKN	Facility Type: VORTAC	Flight Inspection Remark Type: New FC Slot			
<p>Procedure Comments: MAJOR AMENDMENT</p> <p>ACTIVE DATA USED FOR PAKN AIRPORT AND RUNWAYS.</p> <p>CHANGED MISSED TO READ: CLIMBING LEFT TURN TO 3000 ON HEADING 240 AND ON AKN VORTAC R-210 TO OLLER/15.00 DME AND HOLD.</p> <p>REQUEST FI TABLE TOP REVIEW</p> <p>THIS CANCELS FDC NOTAM 1/XXXX</p> <p>CONTACT: ALLAN WILL, TEAM 2 SUBTEAM-C MANAGER, 405.954.6103</p>					

QUALITY
26
CHECKED

QUALITY
8
CHECKED

VORTAC AKN 112.8 Chan 75	APP CRS 296°	Rwy Idg 8501 TDZE 73 Apt Elev 73
--	------------------------	---

OLD

VOR Y or TACAN Y RWY 30
KING SALMON (AKN)(PAKN)

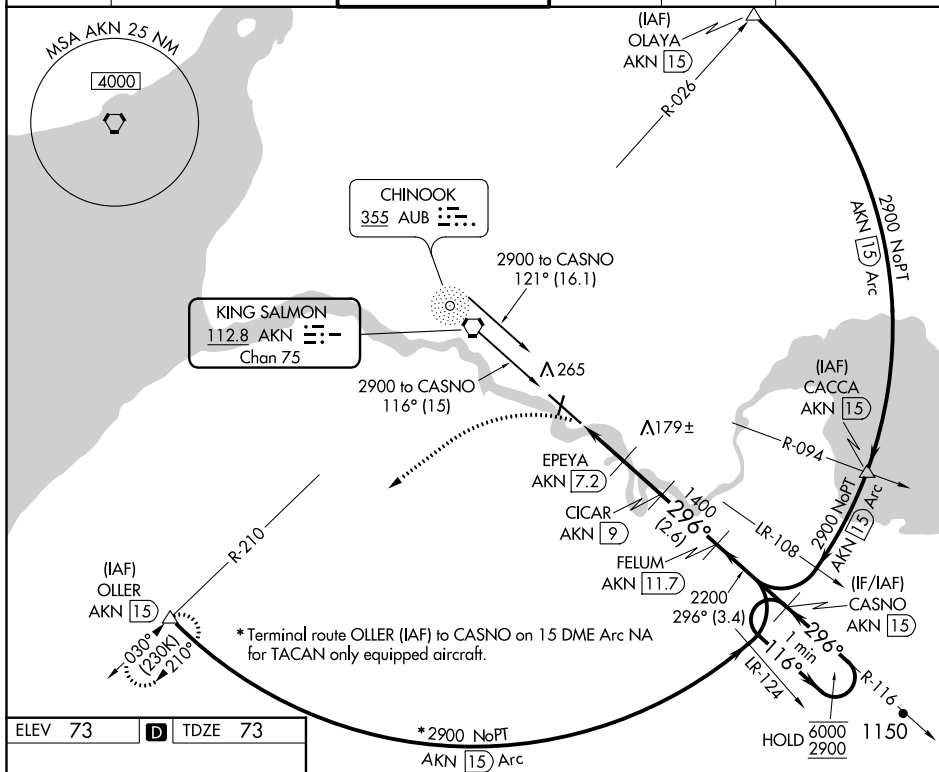
DME required.



 -31°C

MISSED APPROACH: Climbing left turn to 3000 on heading 222° and on AKN VORTAC R-210 to OLLER/15 DME and hold.

ATIS 128.8	ANCHORAGE CENTER 124.8 354.0	KING SALMON TOWER★ 118.3 279.5	GND CON 121.9	UNICOM 122.95	CTAF 121.9 0 352.05
---------------	---------------------------------	-----------------------------------	------------------	------------------	------------------------



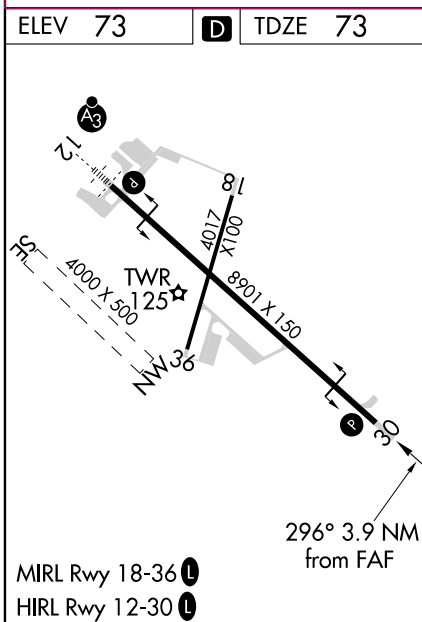
3000 hdg 222°	AKN R-210	OLLER △					
CATEGORY	A		B		C	D	E
S-30	480-1 407 (500-1)		480-1½ 407 (500-1½)				
CIRCLING	580-1 507 (600-1)		580-1½ 900-2¾ 960-3 507 (600-1½) 827 (900-2¾) 887 (900-3)				

VOR Y or TACAN Y RWY 30
KING SALMON (AKN)(PAKN)

MISSED APPROACH: Climbing left turn to 3000 on heading 240° and on AKN VORTAC R-210 to OLLER/15 DME and hold.

 -31°C

CTAF
121.9 **L** 352.05



3000 hdg 240°	AKN R-210	OLLER △	<p>Diagram details: The profile begins at 3000 feet with a heading of 240°. It descends to 800 feet, then to 1400 feet, and finally to 2200 feet. Navigation aids include AKN 5.1, AKN 6.3, EPEYA AKN 7.2, CICAR AKN 9, FELUM AKN 11.7, and CASNO AKN 15. Distances between points are 1.1 NM, 0.9, 1.8 NM, 2.6 NM, and 3.4 NM. A 3.10° angle is indicated near the 800-foot level. A 312° turn is shown at 2200 feet. A 'One Minute Holding Pattern (132°T)' is depicted at 2200 feet with a 116° turn and a 296° turn (312°T).</p>				
CATEGORY	A		B		C	D	E
S-30	480-1 407 (500-1)		480-1½ 407 (500-1½)				
CIRCLING	580-1 507 (600-1)		580-1½ 507 (600-1½)		900-2¾ 827 (900-2¾)	960-3 887 (900-3)	

