



Flight Procedures Cover Page	Task Action: FLIGHT CHECK	Task Type: IAP	Estimated Chart Date: 03/24/2022	APWS Task ID: 26B4FB17142740C788EEFD38382B422E	APWS Project ID: FBB24FA607EE420797C0AD20414069E0
Procedure: ILS OR LOC RWY 32 AMDT 8		Enroute: NO	Specialist: Cyrus, Theron		Agreement Number:
Airport ID: KITH			Airport City: ITHACA		State: NY
Facility ID: ITH	Facility Type: ILS	Flight Inspection Remark Type: New FC Slot			
<p>Procedure Comments: VRNAH LOM DECOMMISSIONING.</p> <p>ACTIVE DATA USED FOR KITH AND RWYS. PENDING DATA USED FOR I-ITH.</p> <p>CONTACT: JON DENTON 405.954.5467. <i>Digitally signed by</i>  <b>JON DENTON</b>  Jan 24, 2022</p>					

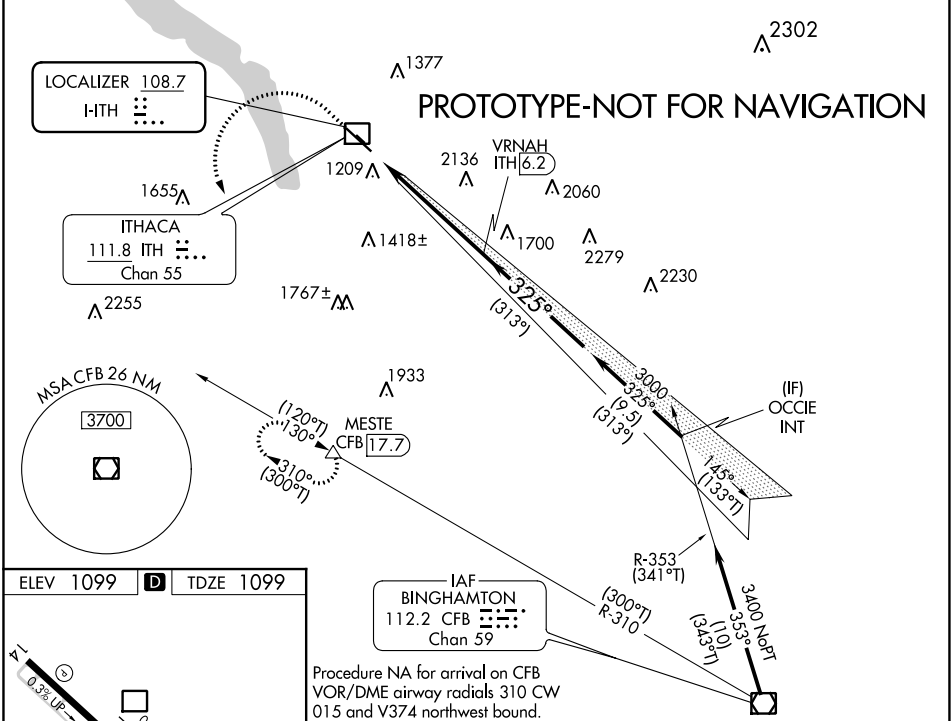
<b>FIPC BASIC FORM</b>						
<b>PROCEDURE:</b> ILS OR LOC RWY 32 AMDT 8			<b>AIRPORT NAME:</b> ITHACA TOMPKINS RGNL		<b>AIRPORT ID:</b> KITH	<b>SPECIAL CONTROL NO:</b> YP-01-012-22
<b>FAC ID:</b> ITH		<b>CITY:</b> ITHACA			<b>ST:</b> NY	<b>ORIG CHART DATE:</b> 03/24/2022
<b>DFL TYPE:</b> PROC/A	<b>THIRD PARTY:</b> <input type="checkbox"/> YES	<b>EST. TIME ON SITE:</b> 0.4	<b>REIMB. NUMBER:</b>	<b>PTS TASK ID:</b>		
<b>PREFLIGHT NOTES</b>						
<b>REVIEWER:</b>					<b>DATE:</b>	
<b>COMMENTS:</b>					<b>CHECK ONE:</b>	
					<input type="checkbox"/> FLT CK REQ <input type="checkbox"/> NFCR <input type="checkbox"/> REJECT	
						<b>YES</b>
					<b>CPV COMPLETE?</b>	
					<b>X</b>	
<b>PROCEDURE RESULTS</b>						
<b>INSPECTION DATE:</b> 01/21/2022	<b>CREW #:</b> VN484	<b>N #:</b> N70	<b>INSTRUMENT PROCEDURE STATUS:</b> <input checked="" type="checkbox"/> SAT <input type="checkbox"/> SAT W/CHANGES <input type="checkbox"/> UNSAT		<b>ARINC CODING:</b> <input type="checkbox"/> SAT <input type="checkbox"/> SAT/GOLD <input type="checkbox"/> UNSAT	
<b>FLIGHT INSPECTOR SIGNATURE:</b> jeremy r virts @ 01/21/2022 14:07			<b>PRINTED NAME:</b> VIRTS, JEREMY RYAN			<b>NOTAM INITIATED?</b>
						<input type="checkbox"/> YES <input checked="" type="checkbox"/> NO
<b>FLIGHT INSPECTOR REMARKS:</b>						
<b>IN-FLIGHT OBSTACLE REPORT</b>						
<b>OBSTRUCTION ID #:</b>	<b>COORDINATES OR LOCATION:</b>	<b>GNSS ALTITUDE (MSL):</b>	<b>BAROMETRIC ALTITUDE (MSL):</b>	<b>HEIGHT ABOVE GROUND LEVEL:</b>		

LOC I-ITH <b>108.7</b>	APP CRS <b>325°</b>	Rwy Idg TDZE Apt Elev	<b>6602</b> <b>1099</b> <b>1099</b>
---------------------------	------------------------	-----------------------------	---

ILS or LOC RWY 32

ITHACA TOMPKINS INTL (ITH)

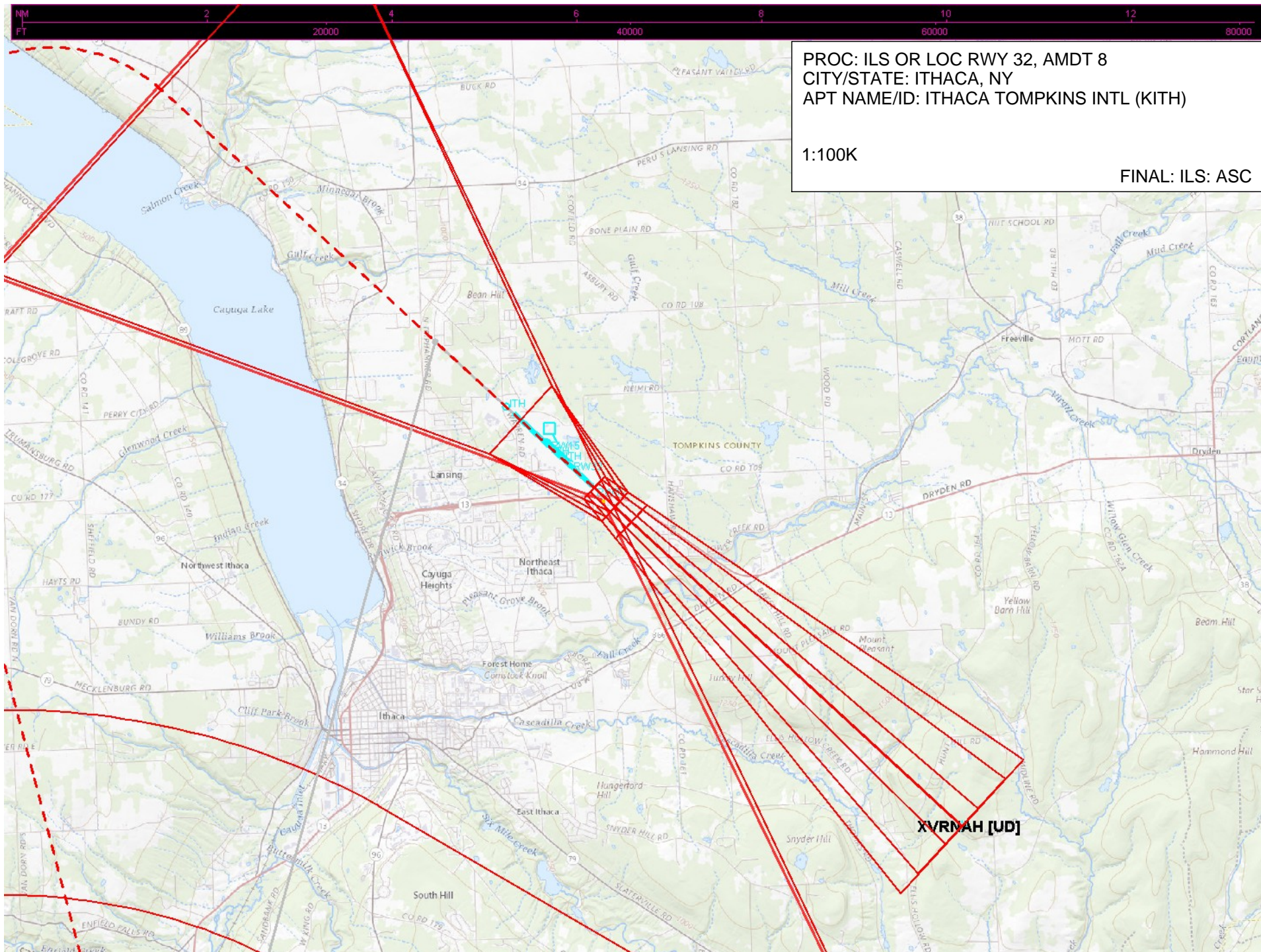
DME required. ⚠ Circling NA to Rwy 15 and 33. Inop table does not apply to S-ILS 32. ⚠ DME from ITH DME. Simultaneous reception of I-ITH LOC and ITH DME ⚠ -19°C required.				MALSR ⚠	MISSED APPROACH: Climb to 2600 then climbing left turn to 4000 on heading 180° and CFB VOR/DME R-310 to MESTE/CFB VOR/DME 17.7 DME and hold.
ATIS <b>125.175</b>	ELMIRA APP CON ★ <b>124.3 257.8</b>	ITHACA TOWER ★ <b>119.6</b> (CTAF) <b>0</b>	GND CON <b>121.8</b>	CLNC DEL <b>121.8</b>	UNICOM <b>122.95</b>



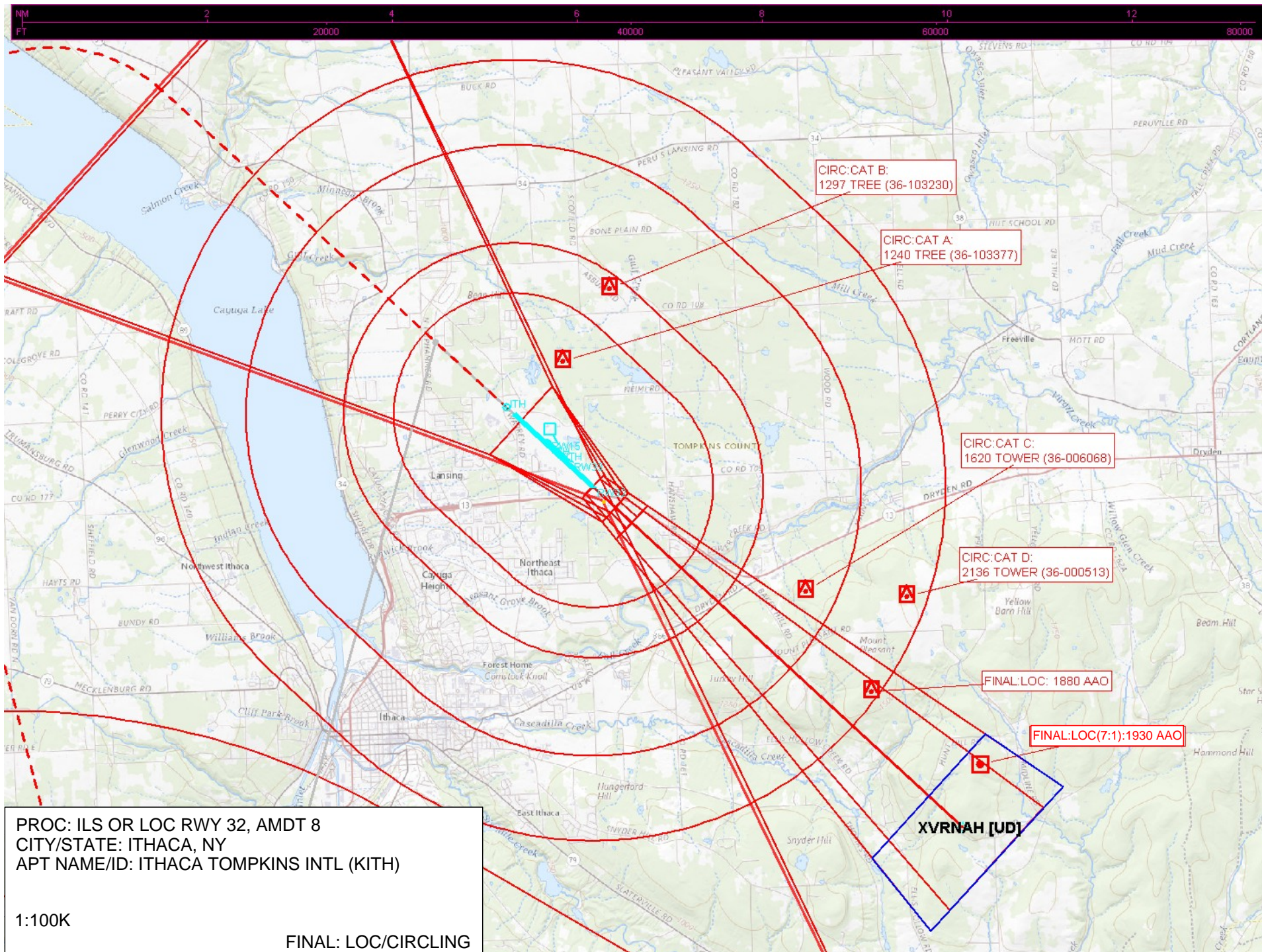
2600	4000	MESTE	VRNAH ITH 6.2	GS 3.20° TCH 54	OCCIE 3400
↑	hdg 180°	CFB R-310	ITH 3.6	3000	3000
3 NM 2.4 NM 9.5					
CATEGORY	A	B	C	D	
S-ILS 32	1349/24 250 (300-½)				
S-LOC 32	2140/40 1041 (1100-¾)	2140/55 1041 (1100-1)	2140-2½	1041 (1100-2½)	
CIRCLING	2140-1¼ 1041 (1100-1¼)	2140-1½ 1041 (1100-1½)	2140-3 1041 (1100-3)	2440-3 1341 (1400-3)	



















# Federal Aviation Administration

## Memorandum

Date: July 2, 2021

To: See the Distribution List

From: Matthew N. Cathcart, Acting Manager, Operations Support Group  
Eastern Service Center, AJV-E2

Subject: Proposal to Decommission Runway (RWY) 32 ITH Outer Marker (OM) and  
VERNA Locator Outer Marker (LOM), Serving Ithaca Tompkins Regional  
Airport (KITH), Located in Ithaca, New York  
Aeronautical Studies 21-AEA-107-NR and 21-AEA-108-NR

### PROPOSAL

This is a study to decommission the RUNWAY (RWY) 32 ITH Outer Marker (OM) and VERNA Locator Outer Marker (LOM), serving Ithaca Tompkins Regional Airport (KITH). This proposal is to decommission/remove the devices without replacement.

The RWY 32 ITH OM and VERNA LOM have reached the end of their life cycle and this study is an effort to assess their continued need.

The proposed studies are as follows:

ITH OM	21-AEA-107-NR
VERNA LOM	21-AEA-108-NR

This proposal is being distributed internally to ensure there is no system reason why this project should not be considered. The internal distribution includes Air Traffic Organization, Airports Division, Flight Standards Division, Flight Procedures Office, and the Regional Military Representatives.

Please send your response to Melinda George, Support Specialist, Operations Support Group, Eastern Service Center, (404) 305-5610, [melinda.a.george@faa.gov](mailto:melinda.a.george@faa.gov), no later than September 2, 2021.

CONCURRENCES
ROUTING SYMBOL AJV-E22 (M. George)
INITIALS/SIG
ROUTING SYMBOL AJV-E2 Admin (S. Ruff)
INITIALS/SIG
ROUTING SYMBOL AJV-E2 (M. Rivera)
INITIALS/SIG
ROUTING SYMBOL AJV-E24 (S. Reddinger)
INITIALS/SIG
ROUTING SYMBOL AJV-E22 (A. Davis)
INITIALS/SIG
ROUTING SYMBOL AJV-E2 (A) GM (M. Cathcart)
INITIALS/SIG



Page 2 – Proposal to Decommission Runway (RWY) 32 ITH Outer Marker (OM) and VERNA Locator Outer Marker (OM), Serving Ithaca Tompkins Regional Airport (KITH), Located in Ithaca, New York

Distribution List:

AFS-480 – Manager, Flight Standards Division, NEXTGEN Branch  
ASW-200; AEA-200; ASO-200 – Manager, Flight Standards Division  
ANE-610; AEA-610; ASO-610 – Manager, Airports Division – Planning & Development Branch  
ANE-620; AEA-620; ASO-620 – Manager, Airports Division – Safety & Standards Branch  
AJV-E3 – Manager, Planning and Requirements Group  
AJW-E21 – Manager, Atlantic Operations Control Center  
AJW-E24 – Manager, Operations Engineering Support Group  
AJV-15 – Manager, Obstruction Evaluation Group  
AJV-E24 – Manager, Eastern Flight Procedures Team  
ALO-820 – Manager, Real Estate & Utilities Group  
AJW-9234 – Manager, Network Operations Team  
AJR-01; 02; 03; 04 – US Military Liaisons

Electronic CC: AEA-230/620; ASO-56/910/920/930; S. Reddinger, L. Burrows, A. Diragi