

<b>Flight Procedure Tracking Form</b>		<b>Action:</b> AMENDMENT	<b>Task Type:</b> IAP	<b>Date Open:</b> 09/24/2019	<b>Task #:</b> 2019092428178901002	<b>Request #:</b> 20190924281789
<b>Procedure:</b> RNAV (GPS) RWY 20 AMDT 1B			<b>Airport ID:</b> KI74	<b>Airport:</b> GRIMES FIELD		<b>Reimbursable #:</b> NO
<b>City:</b> URBANA	<b>ST:</b> OH	<b>GPS #:</b>	<b>Estimated Chart Date:</b> 01/30/2020		<b>FICO #:</b>	
<b>Fac ID:</b> N/A		<b>Fac. Type:</b>		<b>Specialist:</b> WILLIAM HANBY		
<b>Procedure Review</b>						
	<b>Rec'd</b>	<b>Rel'd</b>	<b>Full Name</b>	<b>Comments</b>		
<b>Lead:</b>	09/24/2019			<div style="display: flex; justify-content: space-between;"> <div> <b>QUALITY</b> 20 <b>CHECKED</b> </div> <div> <i>Digitally signed by</i>  <b>BRIAN J BICKETT</b>  Dec 07, 2019 </div> <div> <b>QUALITY</b> 26 <b>CHECKED</b> </div> </div>		
<b>QA:</b>						
<b>Liaison:</b>						
<b>Procedure Comments:</b> ENROUTE-NON <b>Remark Type:</b> INFORMATION						
P-NOTAM NEW CIRCLING AREAS PROCESSED IAW AIRCRAFT OPERATIONS GROUP (AJW-33) MEMO, OCTOBER 3, 2018, SUBJECT: FLIGHT INSPECTION REVIEW NOT REQUIRED. CONTACT HEIDI SNIDER, AJV-A422, 405-954-7726. <div style="text-align: right;">P-NOTAM DOES NOT AFFECT CODING</div>						

WAAS CH <b>78419</b> <b>W20A</b>	APP CRS <b>202°</b>	Rwy Idg TDZE <b>1068</b> Apt Elev <b>1068</b>
--	------------------------	---

OLD

RNAV (GPS) RWY 20

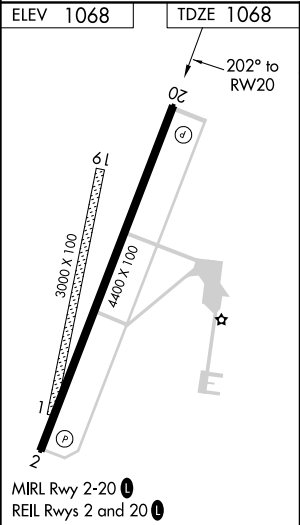
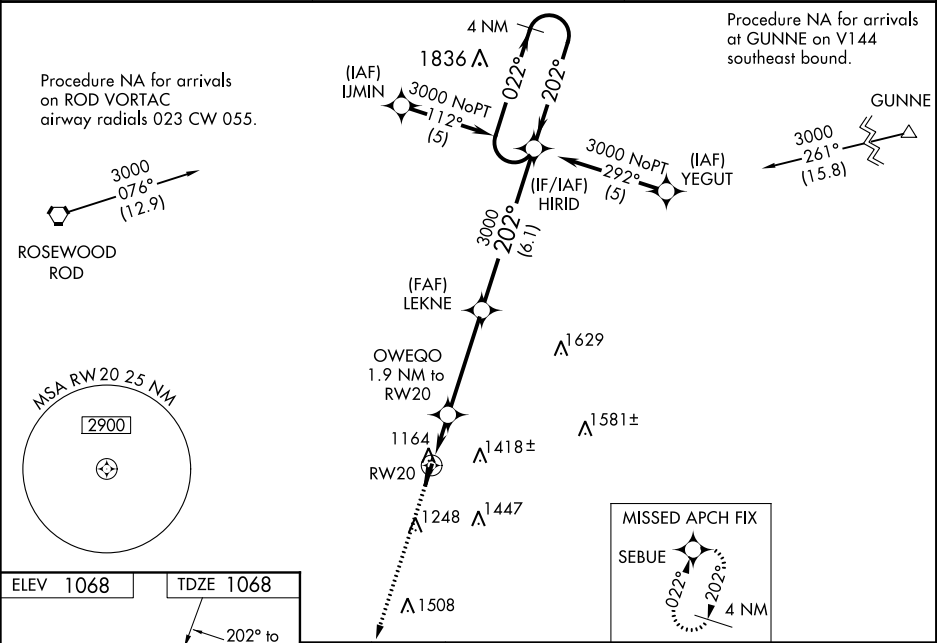
GRIMES FIELD (I74)

RNP APCH.

Baro-VNAV NA when using Springfield altimeter setting. For uncompensated Baro-VNAV systems, LNAV/VNAV NA below -17°C (2°F) or above 54°C (130°F). Rwy 20 helicopter visibility reduction below ¾ SM NA. When local altimeter setting not received, use Springfield altimeter setting and increase all DA 44 feet, all MDA 60 feet, increase LPV all Cats and LNAV Cat C visibility ¼ mile. VDP NA with Springfield altimeter setting. Circling NA to Rwy 1 and 19.

MISSED APPROACH:  
Climb to 4000 direct  
SEBUE and hold.

AWOS-3 <b>118.325</b>	COLUMBUS APP CON <b>118.425 294.5</b>	UNICOM <b>122.7 (CTAF) 0</b>
--------------------------	--	---------------------------------

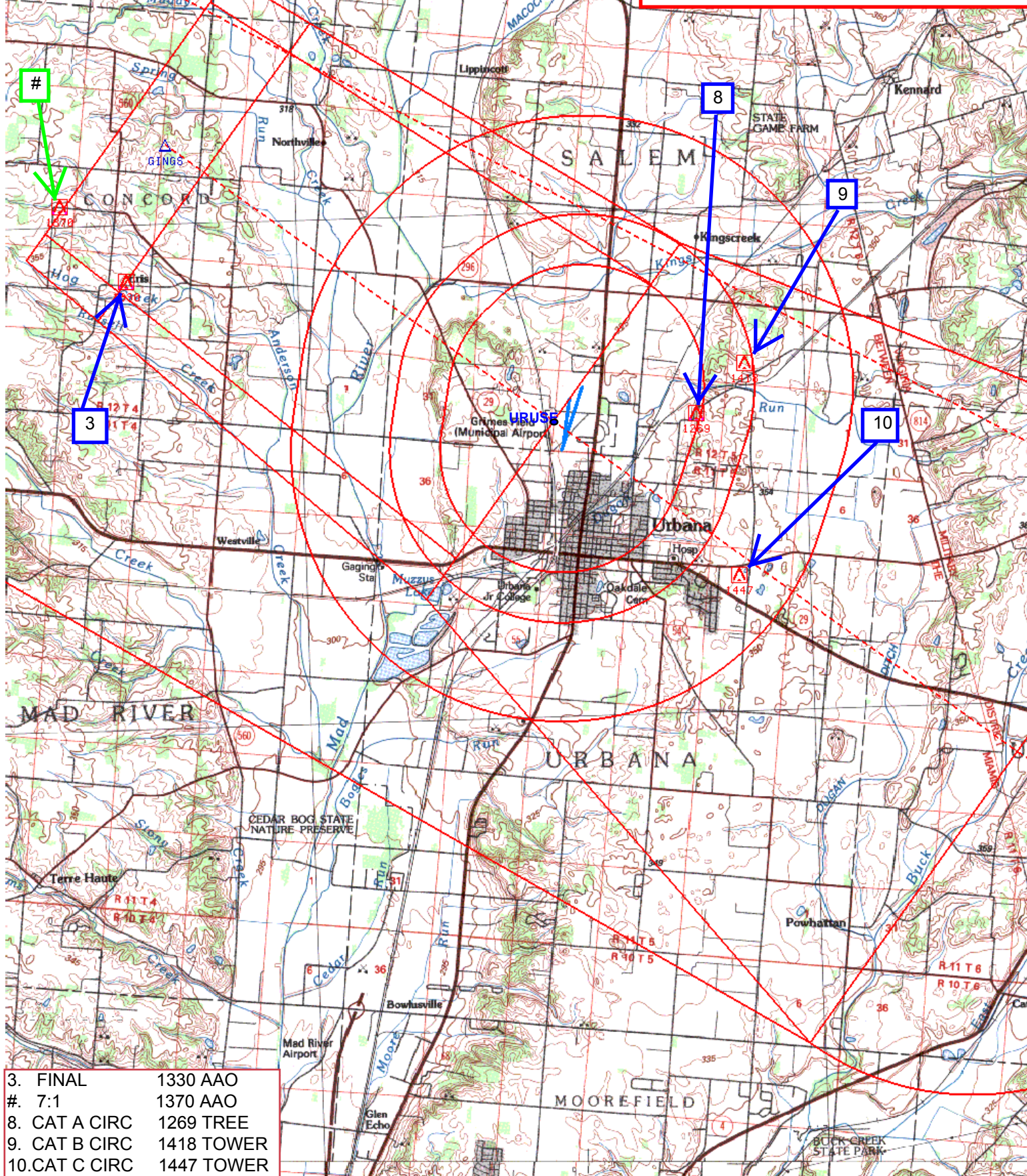


4000	SEBUE	OWEQO 1.9 NM to RW20	LEKNE 3000	HIRID	4 NM Holding Pattern
*LNAV only.	*1 NM to RW20	*1700	3000	3000	GP 3.00° TCH 38
1 NM	0.9 NM	4 NM	6.1 NM		
CATEGORY	A	B	C	D	
LPV DA	1347-1	279 (300-1)		NA	
LNAV/ VNAV DA	1469-1½	401 (500-1½)		NA	
LNAV MDA	1420-1	352 (400-1)		NA	
CIRCLING	1580-1	512 (600-1)	1580-1½ 512 (600-1½)	NA	

fpogjl | ki74vord (PROD) | 18 Apr 2019 12:11:31 | 1" = 8333.3 feet (MAP)

Map from KI74 VOR-A showing new circling areas and controlling obstacles

# CATS A-C CIRCLING URBANA, OH URBANA/GRIMES FIELD, (I74) 100K - CIRCLING



3. FINAL	1330 AAO
#. 7:1	1370 AAO
8. CAT A CIRC	1269 TREE
9. CAT B CIRC	1418 TOWER
10. CAT C CIRC	1447 TOWER